

INDEX OF SHEETS

SHEET NO.	Title Page
2-3	Typical Cross sections of Improvement
4-5	Quantity Summary Sheets
6-7	Item Detail and Drainage Sheets
8-11	Earthwork Sheets
12-13	Blank
14-15	R.O.M. Detail Sheets
16-23	Plan and Profile Sheets
24	Blank
25	A-6 Solid Rock Excavation
26	B-1 Banking Tables
27	B-5 Typical Slope Grading
28	B-6 Rock Excavation
29	B-7 Embankment on a Slope
30	Blank
31	B-7 Details of Rest Area
32	C-1 Curb
33	D-1 Precast Reinforced Concrete Pipe Drop Inlet
34	D-2 Underdrain and Headwalls
35	D-3 Jute Matting
36	D-4 Elbows and Flushing Basins
37	D-5 Details of Grates and Covers for Use with Catch Basins
38	D-6 Concrete Catch Basin or Manhole
39	D-7 Precast Reinforced Concrete Curb Drop Inlet
40	E-1 Barricades, Signs and Lights
41	E-2 Federal Aid Construction Identification Signs
42	G-3 Trench Cable Guard Rail with Steel Posts
43	G-4 Dead End Anchorage at Bridge Approach
44	G-5 Wood and Steel Harker and Guide Posts
45	G-6 Plank Guard Rail
46	J-1 Project and Boundary Markers
47	J-2 Standard Concrete Steps
48	J-3 Field Office
49	Blank
50	Blank
51	Blank
52	Blank
53	Blank
54	Blank
55	Blank
56	Blank
57	Blank
58	Blank
59	Blank
60	Blank
61	Blank
62	Blank
63	Blank
64	Blank
65	Blank
66	Blank
67	Blank
68	Blank
69	Blank
70	Blank
71	Blank
72	Blank
73	Blank
74	Blank
75	Blank
76	Blank
77	Blank
78	Blank
79	Blank
80	Blank
81	Blank
82	Blank
83	Blank
84	Blank
85	Blank
86	Blank
87	Blank
88	Blank
89	Blank
90	Blank
91	Blank
92	Blank
93	Blank
94	Blank
95	Blank
96	Blank
97	Blank
98	Blank
99	Blank
100	Blank

Sheets added in Plans
 5 Earthwork Sheets
 11 Revised X Section Sheets
 20 Drainage Sheets
 3 Channel Section Sheets
 3 Details (Interchange R/L 103 & R/O 103)
 7 Prints of Bridge Detail Plans

(To Be Returned To R.O.M. Division)
 Form of 103
 PERMIT
 RIGHT-OF-WAY DIVISION

**STATE OF VERMONT
 DEPARTMENT OF HIGHWAYS
 PROPOSED IMPROVEMENT**

FEDERAL AID PROJECT

**TOWNS OF MT. HOLLY-LUDLOW
 COUNTIES OF RUTLAND AND WINDSOR
 VT. ROUTE 103
 RUTLAND-BELLOWS FALLS ROAD**

PROJECT NAME & NUMBER TYPE PAVT. AREA
 MT. HOLLY-LUDLOW F 025-1(6) BIT.CONC. 43,163 S.Y.

RECORD PLANS

MATERIALS
 SUBBASE OF GRAVEL-PIERCE HIT & LAMPERT PIT-LUDLOW, VT.
 SUBBASE OF SAND-FISH & GAME PIT-LUDLOW, VT.
 SUBBASE OF CRUSHED ROCK, PENETRATION MACADAM CRUSHED
 STONE BASE COURSE & PEA STONE-KELLEY QUARRY-MT. HOLLY, VT.
 GRAVEL BACKFILL & SHOULDERS-PIERCE PIT-LUDLOW, VT.
 REFINED TAR-HUGGING REFINERY-MALDEN, MASS.
 TANK EMULSION & JOINT SEALER-HOT POURED-TRIRAM CORP-FRAMINGHAM, MASS.
 CUTBACK ASPH. & ASPH. CEVENT-HUMBLE OIL CO.-EVERETT, MASS.
 BITUMINOUS CONC. PAVT.-COLD RIVER HOT MIX, INC.-N. WALPOLE, N.H.
 CONCRETE CLASS A A S B-JOSEPH P. CARRARA & SONS INC.-RUTLAND, VT.
 REINFORCING STEEL-BETHLEHEM STEEL CO.-ALBANY, N.Y.
 STRUCTURAL STEEL & PRE-FORMED JOINT SEALER-VERMONT
 STRUCTURAL STEEL CORE-BURLINGTON, VT.
 ASPHALTIC ASBESTOS COATING-W.V. WYMAN, INC.-GREENFIELD, MASS.
 BRIDGE RAILING-WARD WELLS, CO., INC.-NEWTON LOWER FALLS, MASS.
 REL. LEAF PAINT-WATERPROOF PAINT & VARNISH CO.-WATERTOWN, MASS.
 BRIDGE PAINT-GRAY-MASTER PAINT & VARNISH CO.-NEW ANDOVER, MASS.
 BRIDGE PAINT-GRAY-MASTER PAINT & VARNISH CO.-NEW ANDOVER, MASS.
 METAL CULVERT PIPE-NEW ENGLAND METAL CULVERT CO., INC.-WHITE
 RIVER JUNCTION, VT.
 REINFORCED CONCRETE PIPE-FRECH, C.C.D.I. & GUARD RAIL ITEMS -
 S.T. GRISWOLD & CO. INC.-WILKISTON, VT.
 TREES, SHRUBS & VINES-PUTNEY NURSERIES, INC.-PUTNEY, VT.

BEGINNING AT A POINT 1.09 MILES WESTERLY OF THE MOUNT HOLLY-LUDLOW TOWN LINE AND EXTENDING SOUTHEASTERLY 3.065 MILES.

LENGTH OF ROADWAY 16,101.69 FEET = 3.049 MILES
 LENGTH OF BRIDGE 8451 FEET = 0.016 MILE
 LENGTH OF PROJECT 16,186.20 FEET = 3.065 MILES

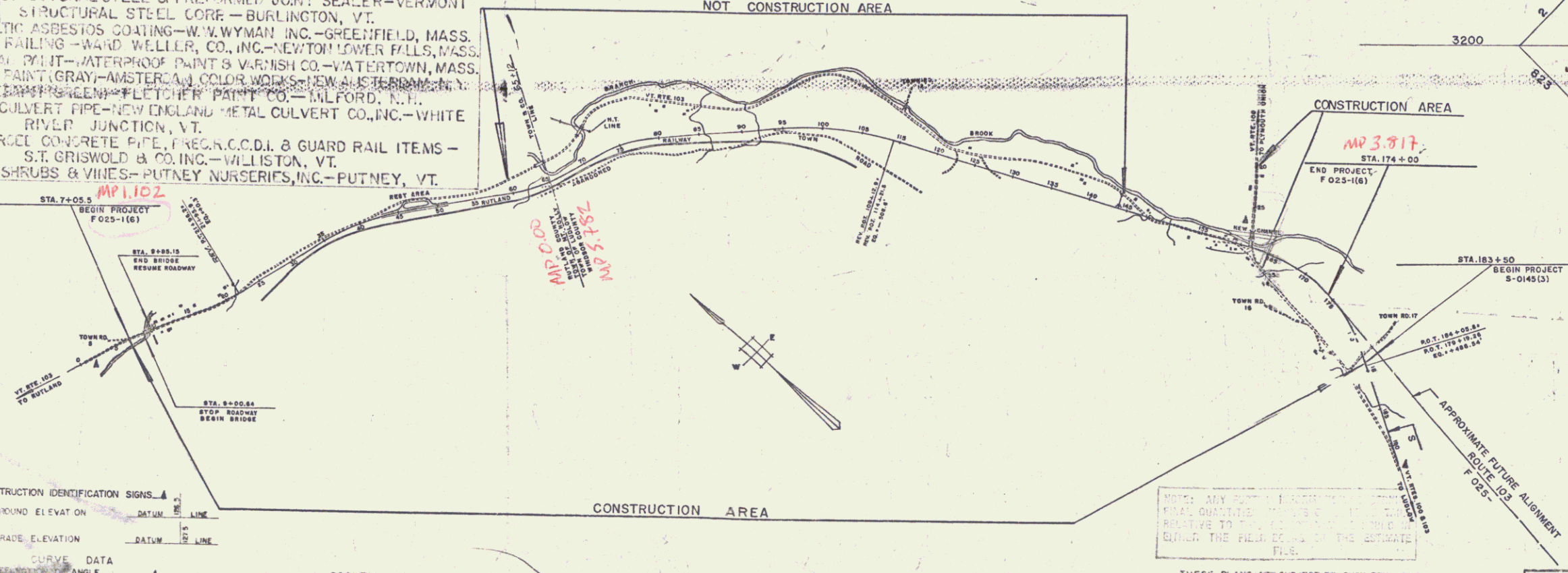
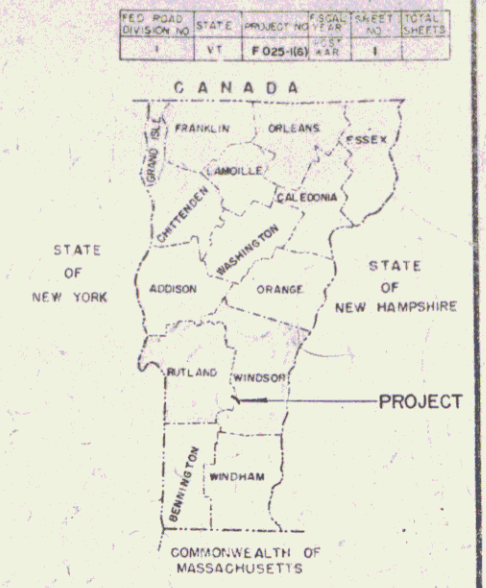
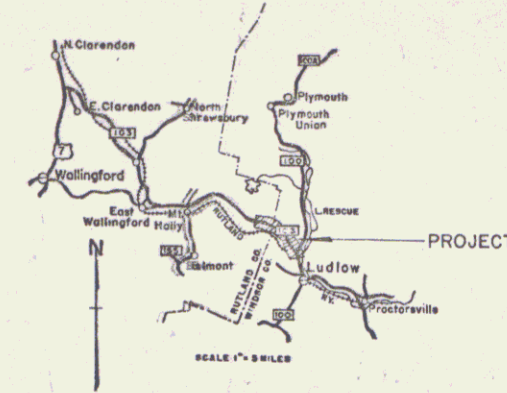
1965 ADT	2850-4000
1965 ADT	4400-5700
1965 DHV	580-740
D	60%
T	8-10%
V	50 M.P.H.

CONTRACTOR-S.V. ROSSI CONST. CO., INC.
 TORRINGTON, CONN.
 RESIDENT ENGINEER-ROBERT W. BUTLER
 INSPECTORS-M. SANDERSON, J. ST. PETER &
 H. DUKE JR.
 RECORD PLANS-A.G. SPIDLE
 CONTRACT
 DATED--JANUARY 6, 1965.
 STARTED--JANUARY 18, 1965.
 COMPLETED--JULY 15, 1966.
 ACCEPTED--JULY 15, 1966.

PROJECT: Mt. Holly-Ludlow
 SHEETS: F 025-1(6)
 TYPE: BITUMINOUS CONCRETE PAVEMENT
 CONTRACTOR: S.V. ROSSI CONST. CO., INC.
 TORRINGTON, CONN.
 Location: Beginning at a point 1.09 miles westerly of the Mt. Holly-Ludlow town line and extending southeasterly 3.065 miles.
 Box 249
 3691

SCALE IN FEET
 0 400 800 1600 2400

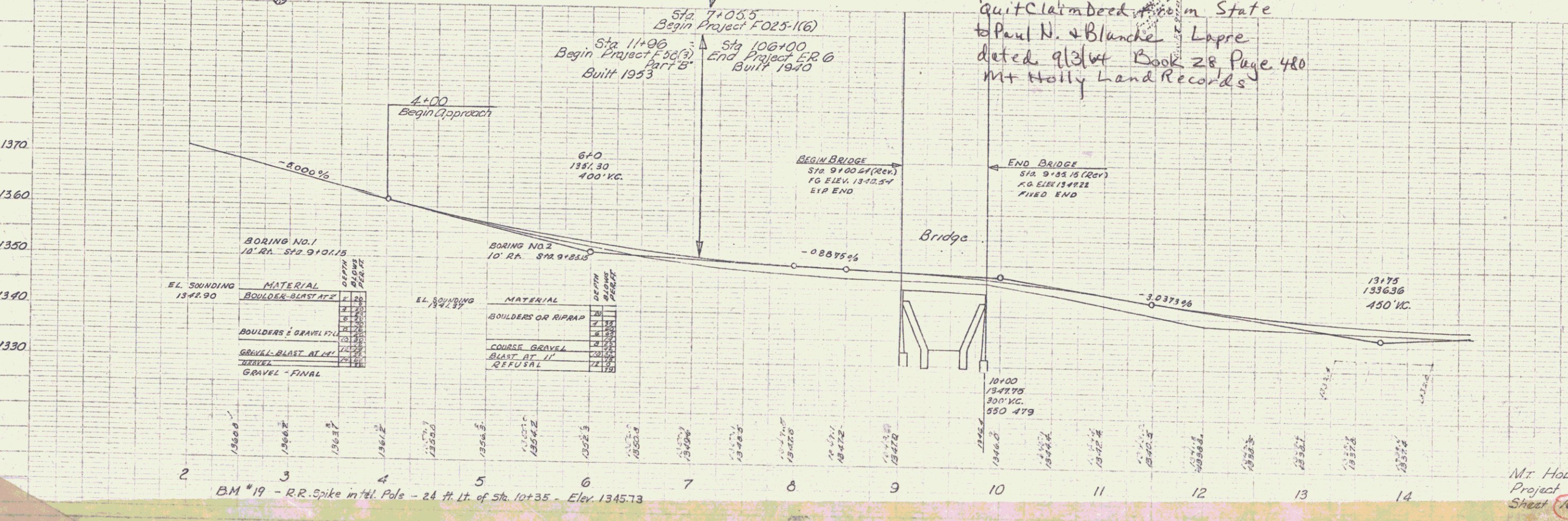
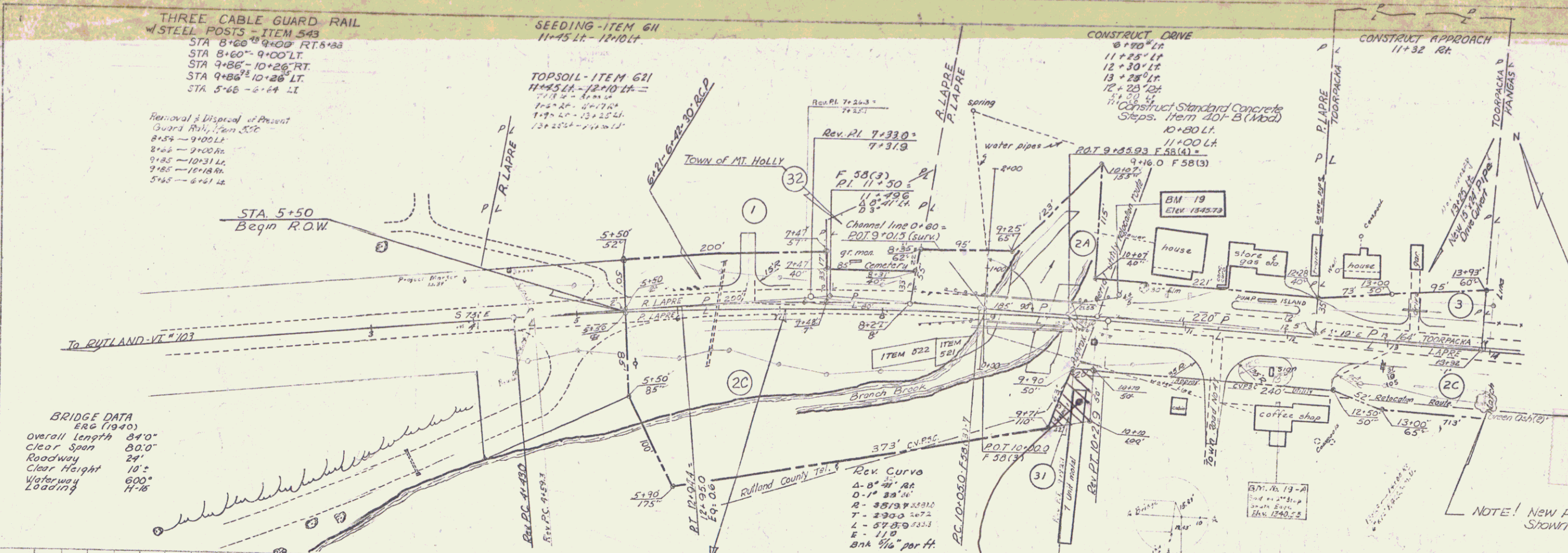
ITEM	DATE	APPROVED
APPROVED	7/5/63	[Signature]
APPROVED	6/27/63	[Signature]
APPROVED	6/25/63	[Signature]
APPROVED	7/1/63	[Signature]
APPROVED	6/29/63	[Signature]
APPROVED	June 26, 1963	[Signature]



THESE PLANS ARE SUBJECT TO SUCH REVISIONS AS MAY BE REQUIRED BY THE BUREAU OF PUBLIC ROADS OR THE COMMISSIONER OF HIGHWAYS.
 CONSTRUCTION IS TO BE CARRIED ON IN ACCORDANCE WITH THE PLANS AND THE STANDARD SPECIFICATIONS FOR HIGHWAY AND BRIDGE CONSTRUCTION OF JANUARY 1958 SUBMITTED TO THE BUREAU OF PUBLIC ROADS AS APPROVED JULY 5, 1959, INCLUDING ALL SUBSEQUENT APPROVED REVISIONS AND SUCH REVISED SPECIFICATIONS AND SPECIAL PROVISIONS AS ARE SUBMITTED WITH THE PLANS.

DEPARTMENT OF COMMERCE
 BUREAU OF PUBLIC ROADS
 PROJECT F 025-1(6)
 SHEET 1 OF 1

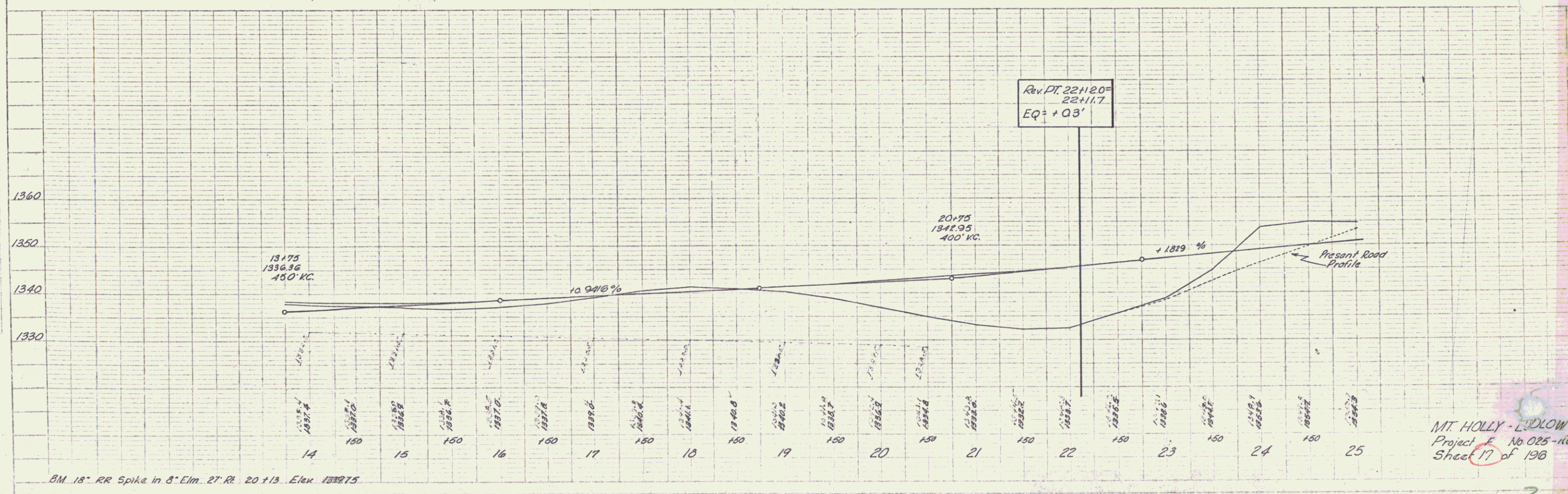
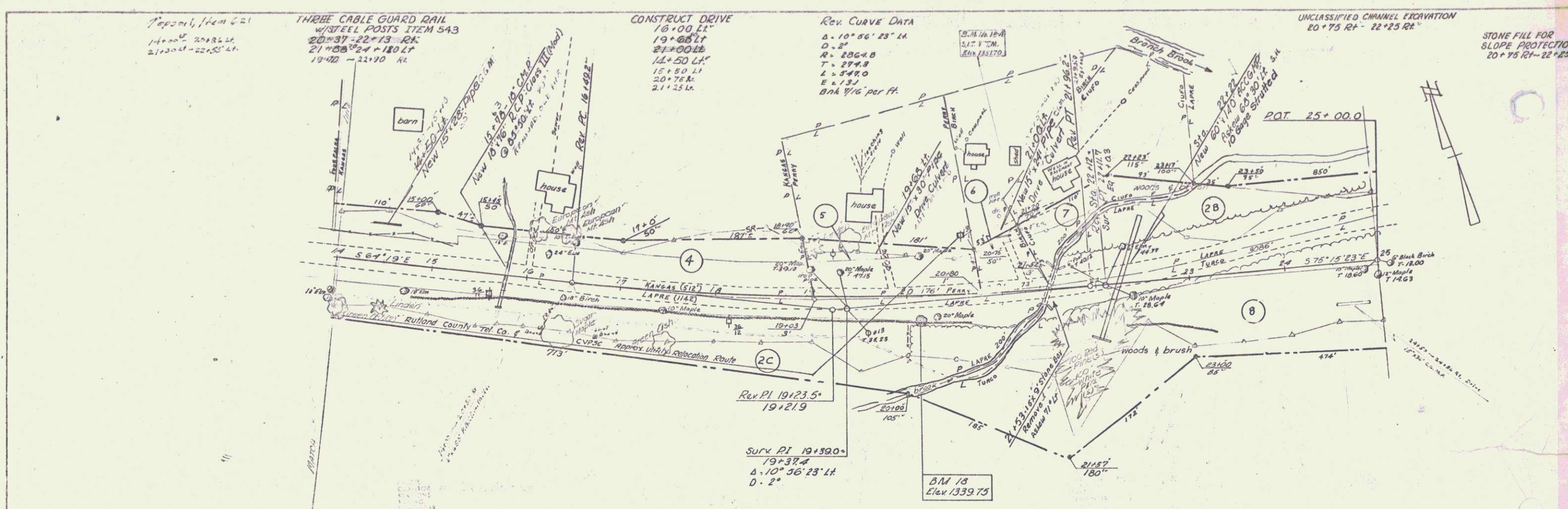
DATE	1/14/60
SCALE	AS SHOWN
DESIGNER	W. J. LUDLOW
CHECKER	W. J. LUDLOW
APPROVED	
TITLE	BRIDGE
PROJECT	MT HOLLY
NO.	1025-116
SHEET	116
TOTAL SHEETS	196



Quit Claim Deed from State
to Paul N. & Blanche Lapre
dated 9/3/54 Book 28 Page 480
Mt Holly Land Records

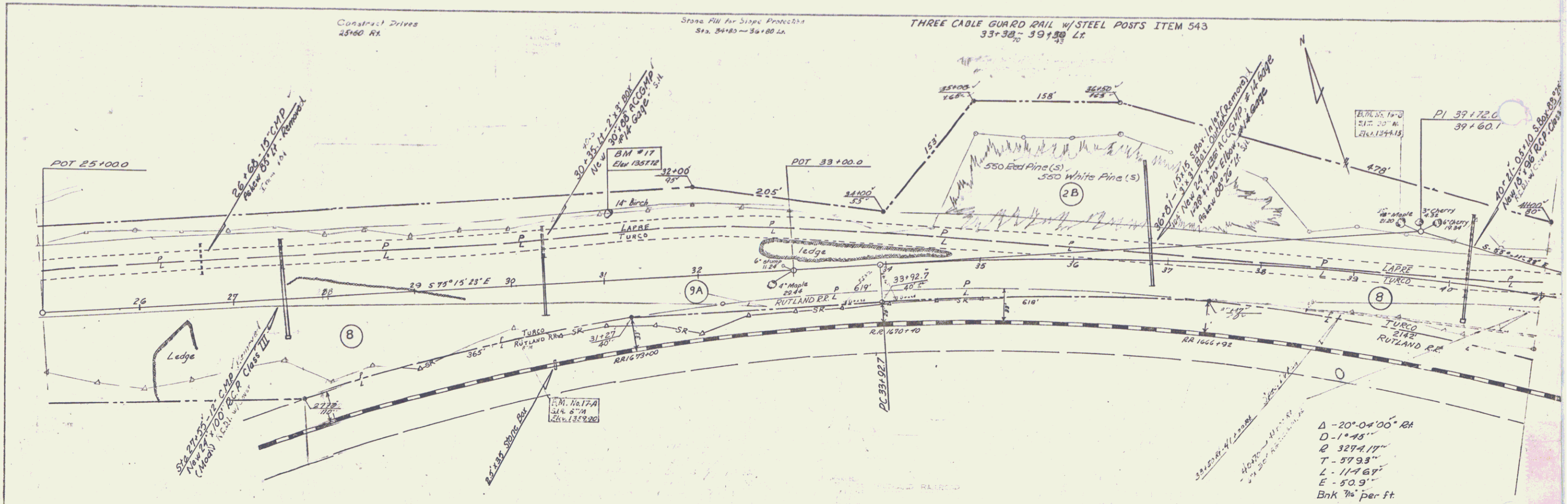
PLAT	1/4" = 1' 0"
DATE	1/60
BY	Traced
CHECKED	
APPROVED	

PROFILE	1/4" = 1' 0"
DATE	
BY	
CHECKED	
APPROVED	

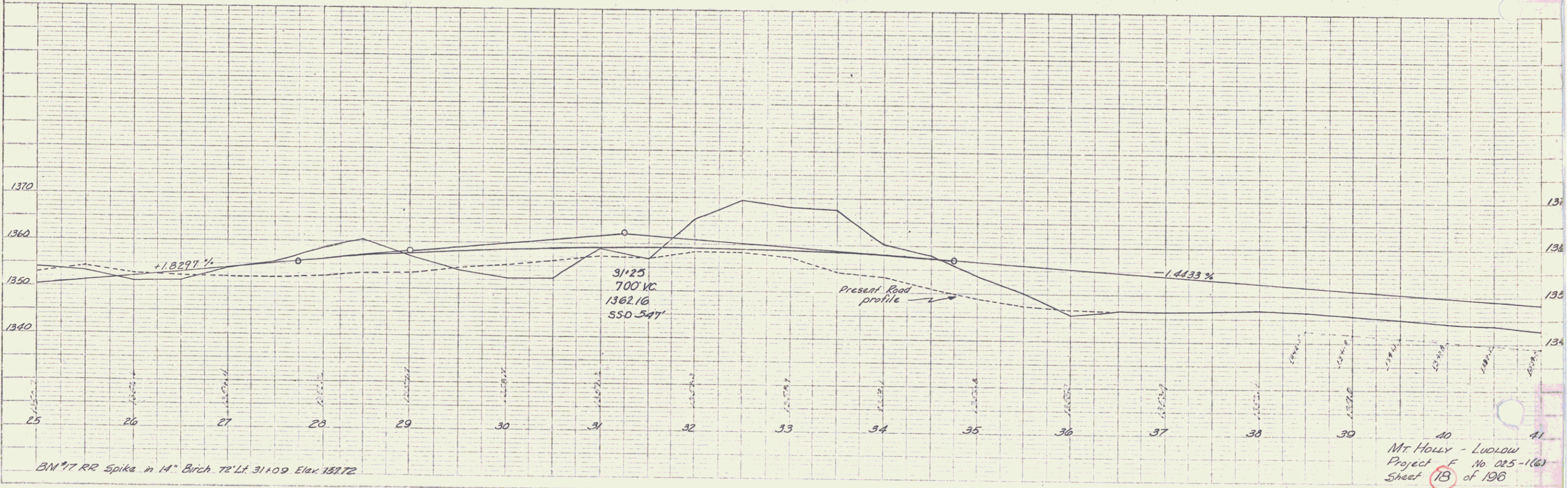


MT HOLLY - LADLOW
 Project E No. 025-nw
 Sheet 17 of 196

PLAN
 DATE 10/1/54
 DRAWN BY [Signature]
 CHECKED BY [Signature]
 TYPED BY [Signature]



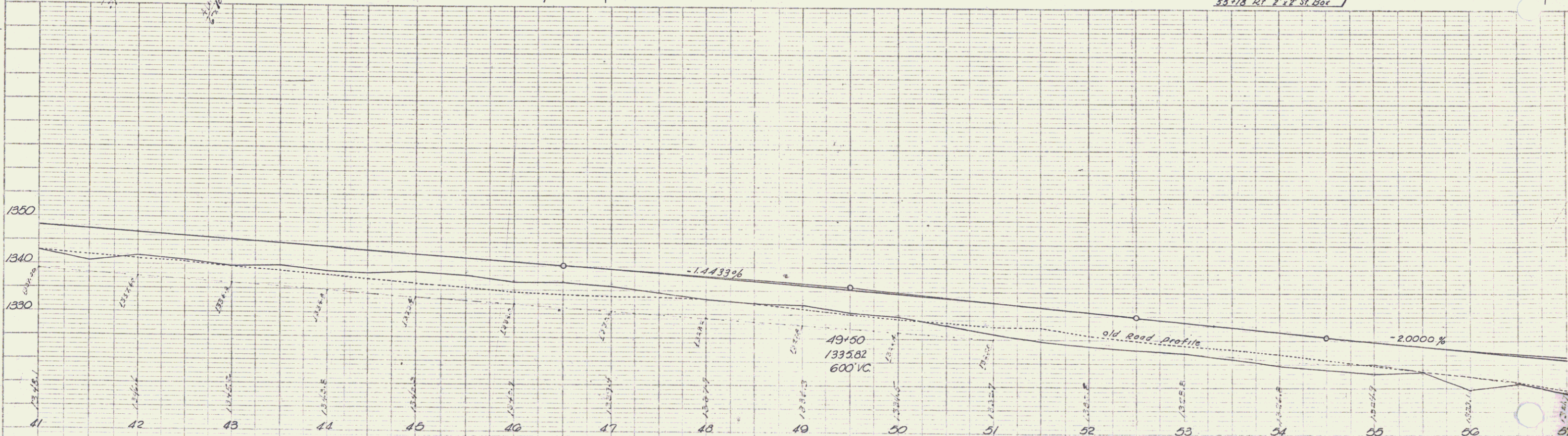
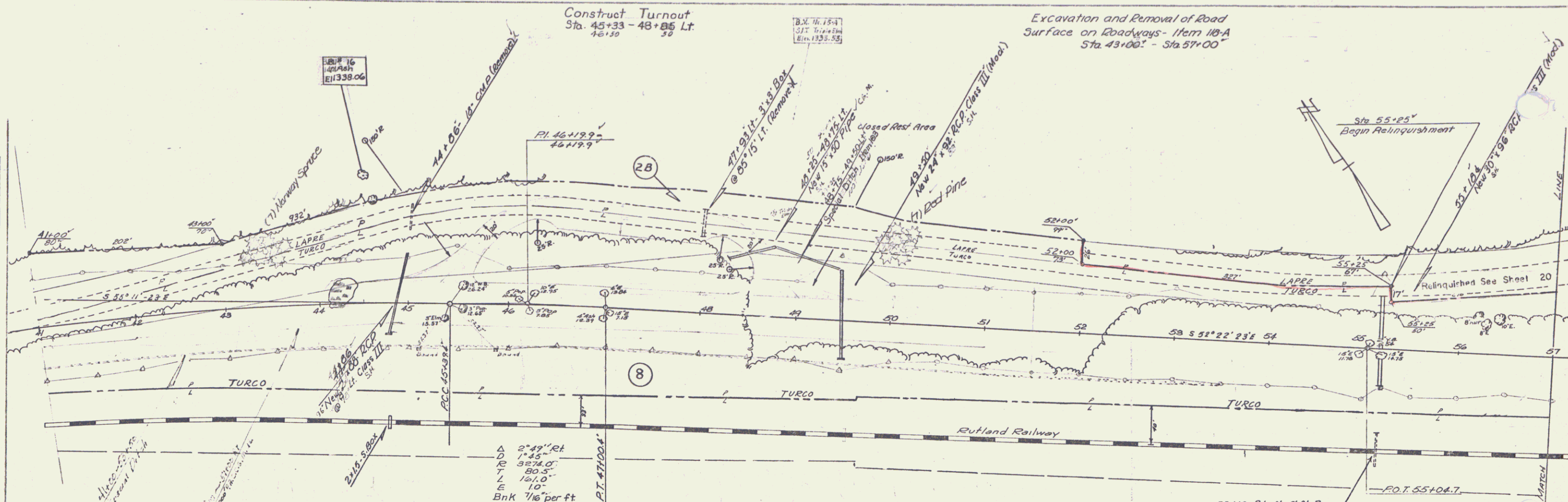
PROFILE
 DATE 10/1/54
 DRAWN BY [Signature]
 CHECKED BY [Signature]
 TYPED BY [Signature]



Mt Holly - Ludlow
 Project No 025-1(6)
 Sheet 18 of 196

PLAN
 DATE
 SHEET NO.
 PROJECT NO.

PROFILE
 DATE
 SHEET NO.
 PROJECT NO.



B.M.#16 - R.R. Spike in 14" Ash - 134 ft. Lt. of Sta. 44+53 - Elev. 1338.06

MT HOLLY - LUDLOW
 F. 025-116
 Sheet 79 of 196

5

Construct Drives
66100 N.E.

TREATED TIMBER CURB - Item 558
62+59 Lt - 71+02 Lt 852'

THREE CABLE GUARD RAIL W/STEEL POSTS
61+54 Lt - 62+50 Lt ITEM 543
61+54 Lt - 73+06 Lt

STONE FILL FOR SLOPE PROTECTION
(Lt. Side of Channel) Item 522
64+75 - 71+00

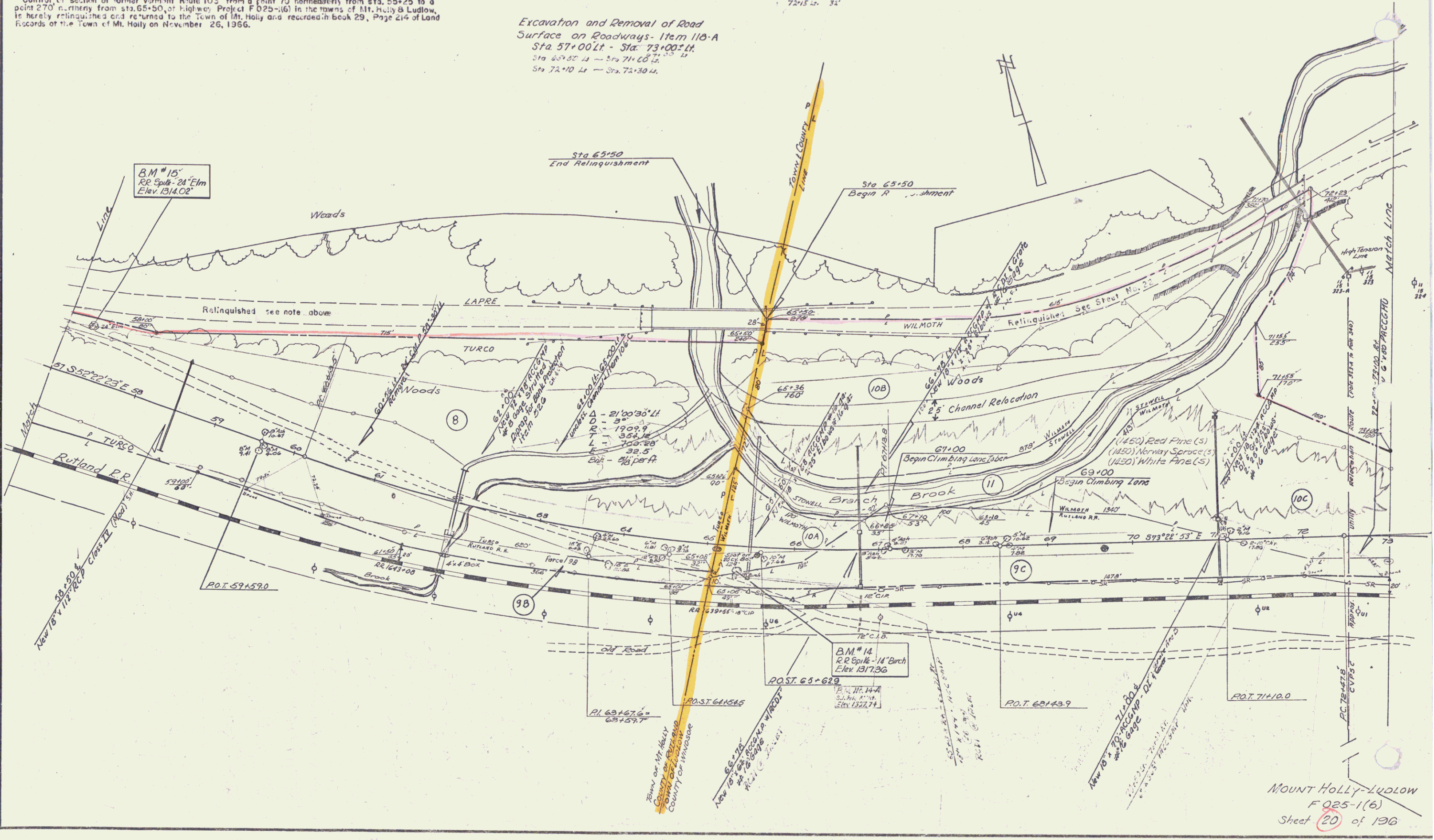
UNCLASS CHANNEL EXCAV - Item 106-C
64+75 - 71+00

STONE FILL (Heavy Type) Item 521
(Rt. Side of Channel)
64+75 - 71+00

Control of section of former Vermont Route 103, from a point 70' northeasterly from sta. 55+25 to a point 270' northerly from sta. 65+50, of highway Project F 025-1(6) in the towns of Mt. Holly & Ludlow, is hereby relinquished and returned to the Town of Mt. Holly and recorded in book 29, Page 214 of Land Records of the Town of Mt. Holly on November 26, 1966.

Excavation and Removal of Road
Surface on Roadways - Item 110-A
Sta 57+00 Lt - Sta 73+00 Lt
Sta 65+50 Lt - Sta 71+00 Lt
Sta 72+10 Lt - Sta 72+30 Lt

Plans Guard Rail w/Pres.Treatment, Item 541-A
63+85 Lt - 24'
72+15 Lt - 31'



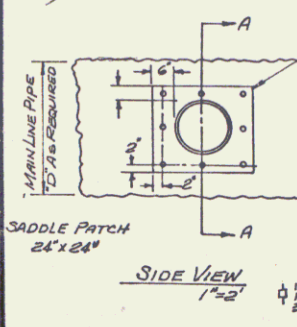
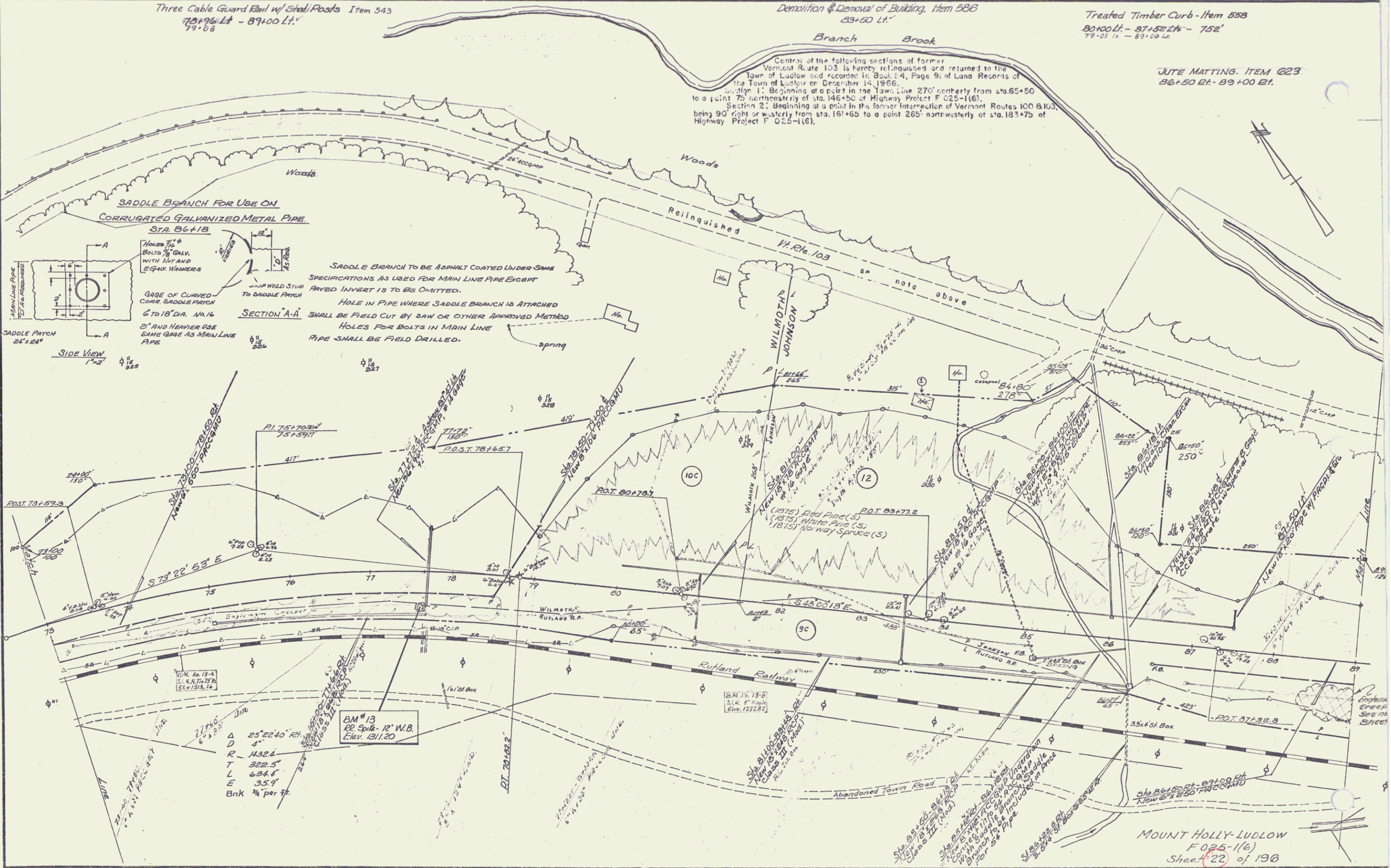
Three Cable Guard Rail w/ Steel Posts Item 543
78+96 Lt - 89+00 Lt.
79+08

Demolition & Removal of Building, Item 586
83+50 Lt.

Treated Timber Curb - Item 558
80+00 Lt - 87+52 Lt - 752'
79+01 Lt - 89+00 Lt.

JUTE MATTING, ITEM 623
86+50 Lt - 89+00 Lt.

Center of the following sections of former Vermont Route 103 is hereby relinquished and returned to the Town of Ludlow and recorded in Book 4, Page 9, of Land Records of the Town of Ludlow on December 14, 1966.
Section 1: Beginning at a point in the Town Line 270' northerly from sta. 65+50 to a point 75' westerly of sta. 146+50 of Highway Project F 025-1(6).
Section 2: Beginning at a point in the former intersection of Vermont Routes 100 & 103, being 90' right or westerly from sta. 161+65 to a point 265' northwesterly of sta. 183+75 of Highway Project F 025-1(6).



SADDLE BRANCH TO BE ASPHALT COATED UNDER SAME SPECIFICATIONS AS USED FOR MAIN LINE PIPE EXCEPT PAVED INVERT IS TO BE OMITTED.
HOLE IN PIPE WHERE SADDLE BRANCH IS ATTACHED SHALL BE FIELD CUT BY SAW OR OTHER APPROVED METHOD
HOLES FOR BOLTS IN MAIN LINE PIPE SHALL BE FIELD DRILLED.

SECTION A-A
SADDLE PATCH 24\"/>

PI 75+703.4
75+397.1
417'

POST 78+57.3
S 73° 22' 53" E
75
76
77
78
79

POST 78+57.3
S 73° 22' 53" E
75
76
77
78
79

POST 78+57.3
S 73° 22' 53" E
75
76
77
78
79

POST 78+57.3
S 73° 22' 53" E
75
76
77
78
79

POST 78+57.3
S 73° 22' 53" E
75
76
77
78
79

POST 78+57.3
S 73° 22' 53" E
75
76
77
78
79

POST 78+57.3
S 73° 22' 53" E
75
76
77
78
79

POST 78+57.3
S 73° 22' 53" E
75
76
77
78
79

POST 78+57.3
S 73° 22' 53" E
75
76
77
78
79

POST 78+57.3
S 73° 22' 53" E
75
76
77
78
79

POST 78+57.3
S 73° 22' 53" E
75
76
77
78
79

POST 78+57.3
S 73° 22' 53" E
75
76
77
78
79

POST 78+57.3
S 73° 22' 53" E
75
76
77
78
79

POST 78+57.3
S 73° 22' 53" E
75
76
77
78
79

POST 78+57.3
S 73° 22' 53" E
75
76
77
78
79

POST 78+57.3
S 73° 22' 53" E
75
76
77
78
79

POST 78+57.3
S 73° 22' 53" E
75
76
77
78
79

POST 78+57.3
S 73° 22' 53" E
75
76
77
78
79

POST 78+57.3
S 73° 22' 53" E
75
76
77
78
79

POST 78+57.3
S 73° 22' 53" E
75
76
77
78
79

POST 78+57.3
S 73° 22' 53" E
75
76
77
78
79

POST 78+57.3
S 73° 22' 53" E
75
76
77
78
79

POST 78+57.3
S 73° 22' 53" E
75
76
77
78
79

POST 78+57.3
S 73° 22' 53" E
75
76
77
78
79

POST 78+57.3
S 73° 22' 53" E
75
76
77
78
79

POST 78+57.3
S 73° 22' 53" E
75
76
77
78
79

MOUNT HOLLY-LUDLOW
F 025-1(6)
Sheet 22 of 196

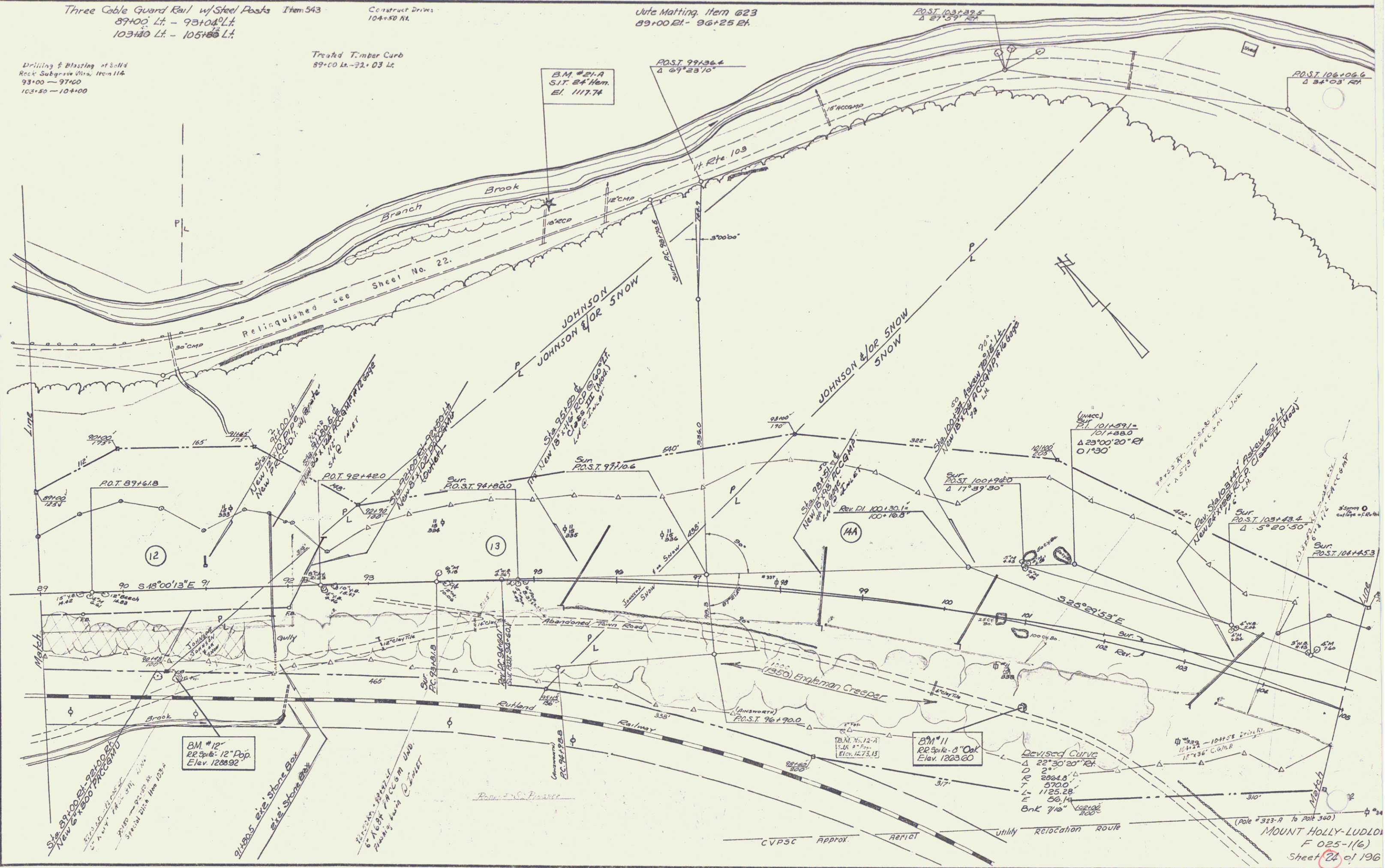
Three Cable Guard Rail w/ Steel Posts Item 543
89+00 Lt - 93+04 Lt
103+00 Lt - 105+00 Lt

Construct Drives
104+50 RL

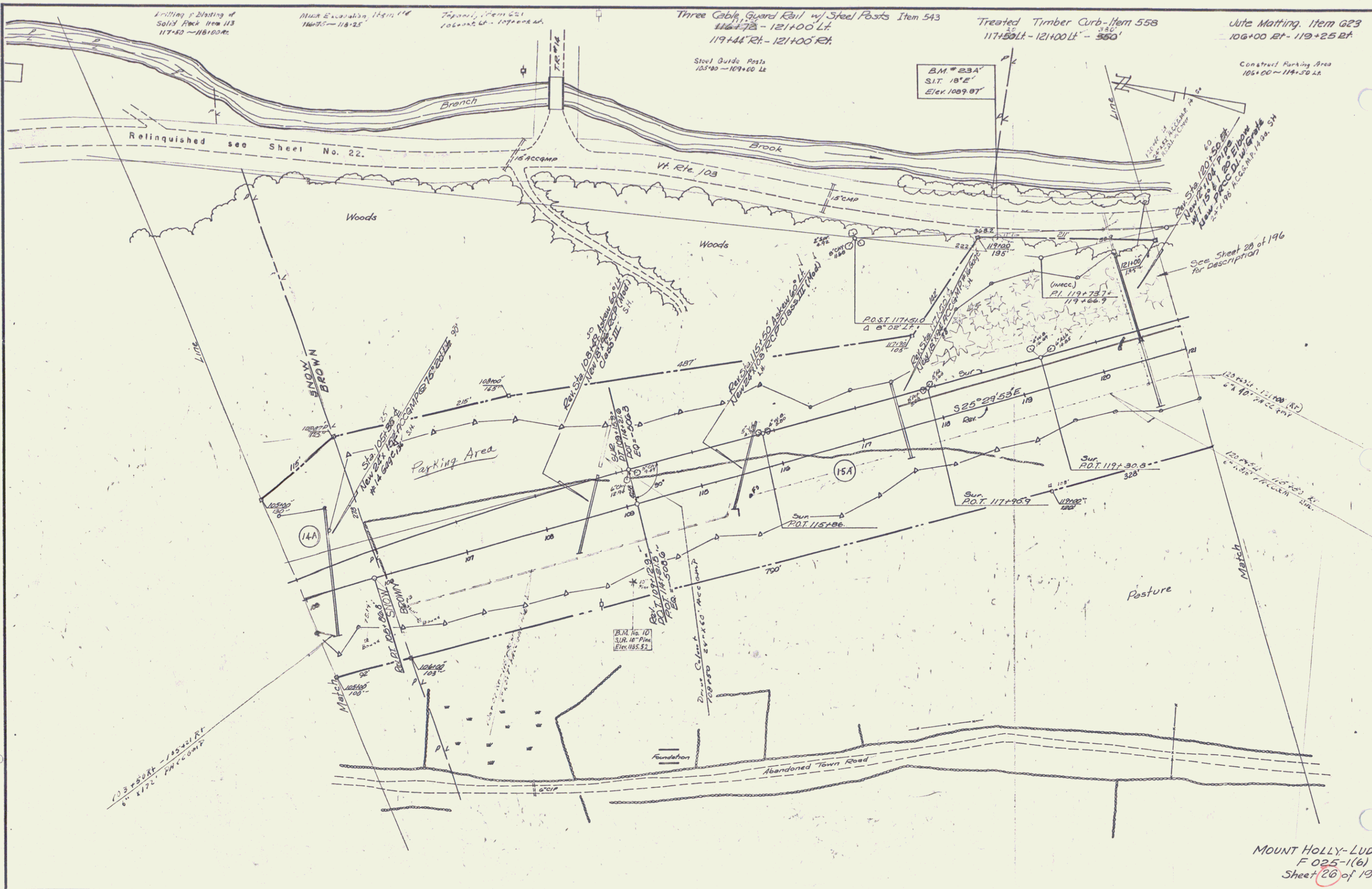
Wire Matting Item 623
89+00 EL - 96+25 EL

Drilling & Blasting of Solid
Rock Subgrade Vials from 116
93+00 - 97+00
101+00 - 104+00

Treated Timber Curb
89+00 Lt - 92+03 Lt



MOUNT HOLLY-LUDLOW
F 025-1(6)
Sheet 22 of 196



Drilling & Blasting of
Solid Rock Item 113
117+50 - 118+00 Rt.

Muck Excavation, Item 114
116+75 - 118+25

Tapered, Item 521
106+00 Lt. - 107+00 Rt.

Three Cable Guard Rail w/ Steel Posts Item 543
116+72.5 - 121+00.0 Lt.
119+44 Rt. - 121+00 Rt.

Treated Timber Curb-Item 558
117+50 Lt. - 121+00 Lt. - 350'

Jute Matting, Item G23
106+00 Rt. - 112+25 Rt.

Steel Guide Posts
105+00 - 107+00 Lt.

BM # 23A
S.T. 18'E
Elev. 1009.07

Construct Parking Area
106+00 - 111+50 Lt.

Relinquished see Sheet No. 22.

Woods

Woods

Parking Area

Pasture

Abandoned Town Road

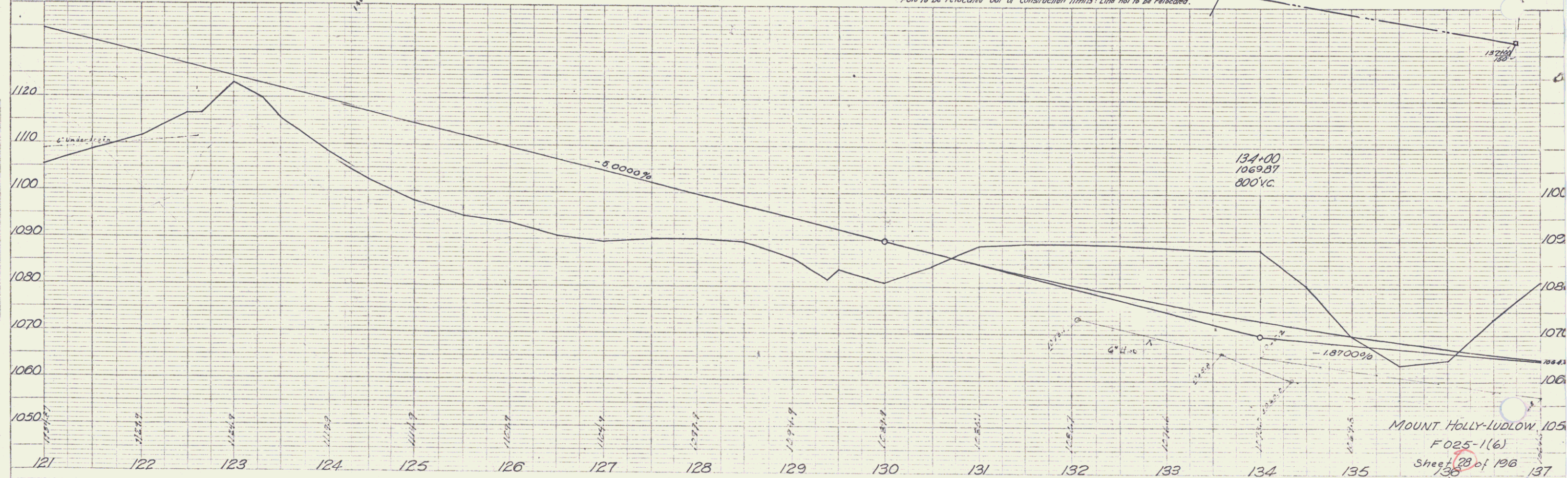
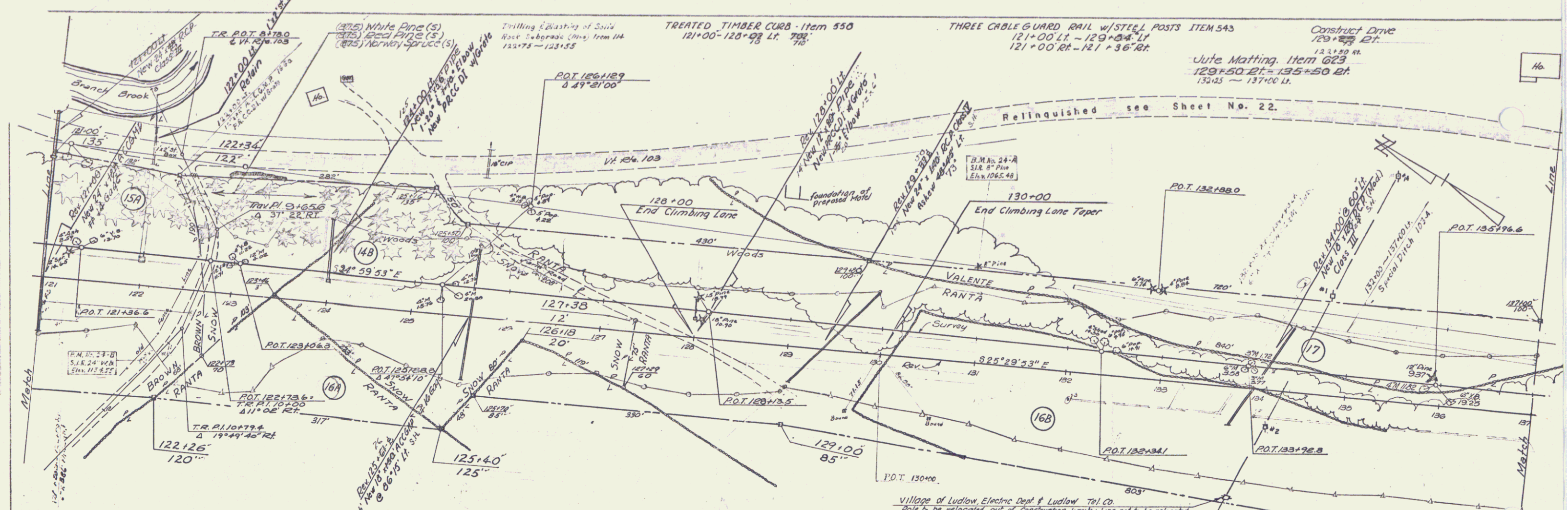
113+50 Rt. - 115+00 Rt.
6' 11/2' Accomp

See Sheet 20 of 196
for description

MOUNT HOLLY-LUDLOW
F 025-1(6)
Sheet 20 of 196

PLAN
 DRAWN BY
 CUMMINGS
 12/21/1916

PROFILE
 DRAWN BY
 CUMMINGS
 12/21/1916



MOUNT HOLLY-LUDLOW 105
 F025-1(6)
 Sheet 28 of 196

10

Drilling & Blasting of solid rock (See Section 114) Item 114
 144+60 - 148+15
 152+50 - 159+00
 Matting Item 623
 153+75 Lt.

Muck Excavation
 142+50 - 144+00
 144+10 to (Live Road)

Three Cable Guard Rail w/Steel Posts Item 543
 149+72 Lt. - 152+40 Lt.
 150+32 Lt. - 151+18 Lt.

Construct Drive
 151+00 Rt.

Construct Approach
 146+50 Lt.
 144+50 Lt.

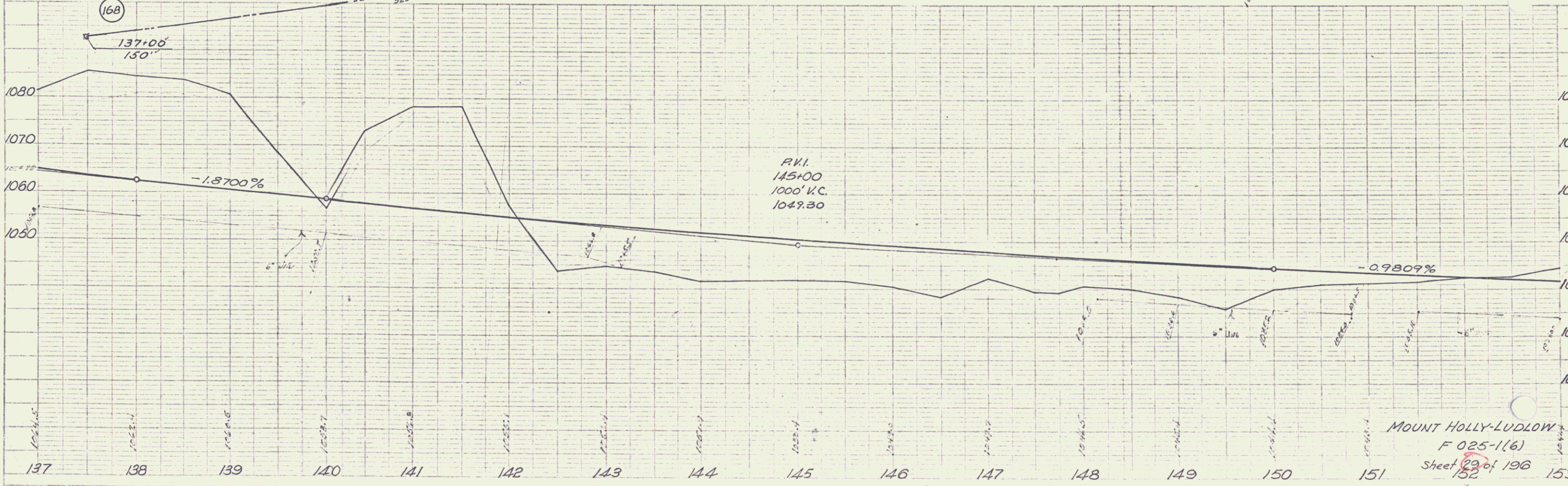
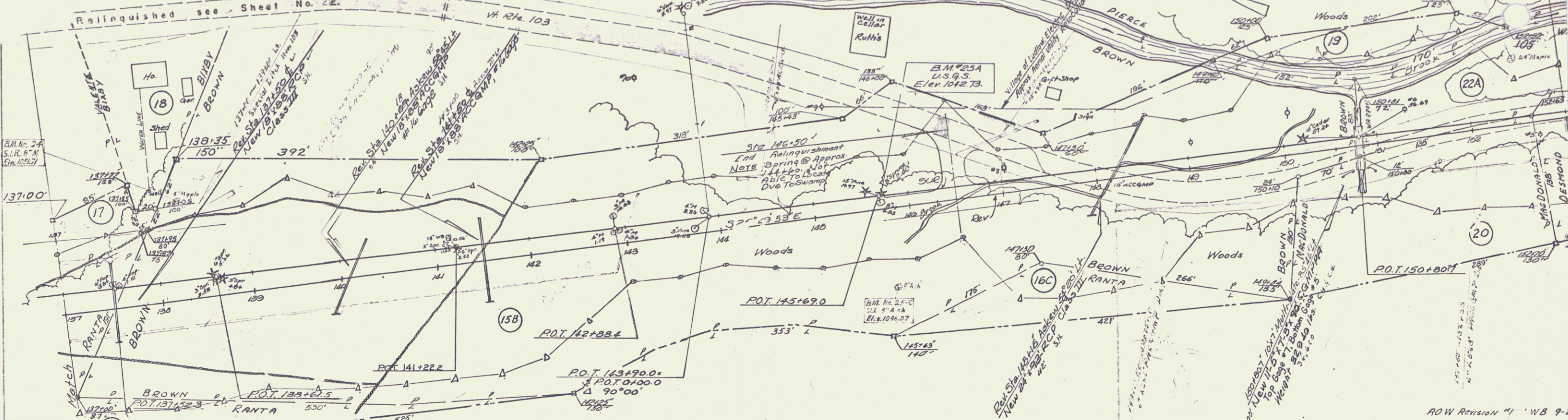
Unclass Chan Excav.
 149+75 Lt. - 152+25 Lt.

Stone Fill For Slope Protection
 149+75 Lt. - 152+25 Lt.

Stone Fill Heavy Type
 Sta. 149+46 - 153+00 Lt.

PLAN	DATE	BY	CHECKED

PROFILE	DATE	BY	CHECKED



MOUNT HOLLY-LUDLOW
 F 025-1(6)
 Sheet 29 of 196

DEMOLITION & REMOVAL OF BUILDING

ITEM 586

Sta 153+65	27'
" 153+70	"
" 157+15	"
" 157+35	"
" 158+45	"
" 158+90	"
" 159+45	"
" 157+80	14'
" 159+00	"

Sta 22+00
Begin Construction

$\Delta 4^{\circ}54'30''$ RT
D 11'
R 572936'
T 2485'
L 4902'
E 632'
No Brk

Three Cable Guard Rail w/ Steel Posts Item 543

156+24 Lt - Vt. 100 27+10 Rt
Vt. 100 27+10 Lt - 169+00 Lt
27+93 Lt - 27+93 Rt } Vt. Rte. 100
27+27 Lt - 27+93 Rt }
30+88 Lt - 32+00 Lt }
Construct Approach
161+9.5 Lt
162+70 Rt
Construct Drive Vt. Rte 100
27+50 Lt
23+00 Rt
191
189+100 Rt.

Unclass Channel Excav. Item 106-C

Chan. 15+00 - Chan. 24+50

Steel Guide Posts
App. @ 10' Int. 15'

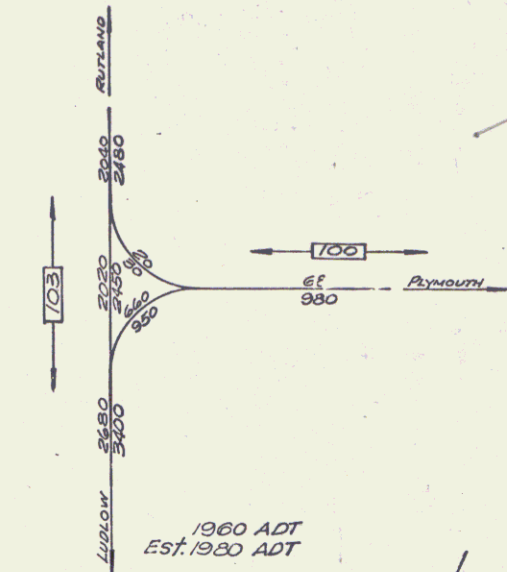
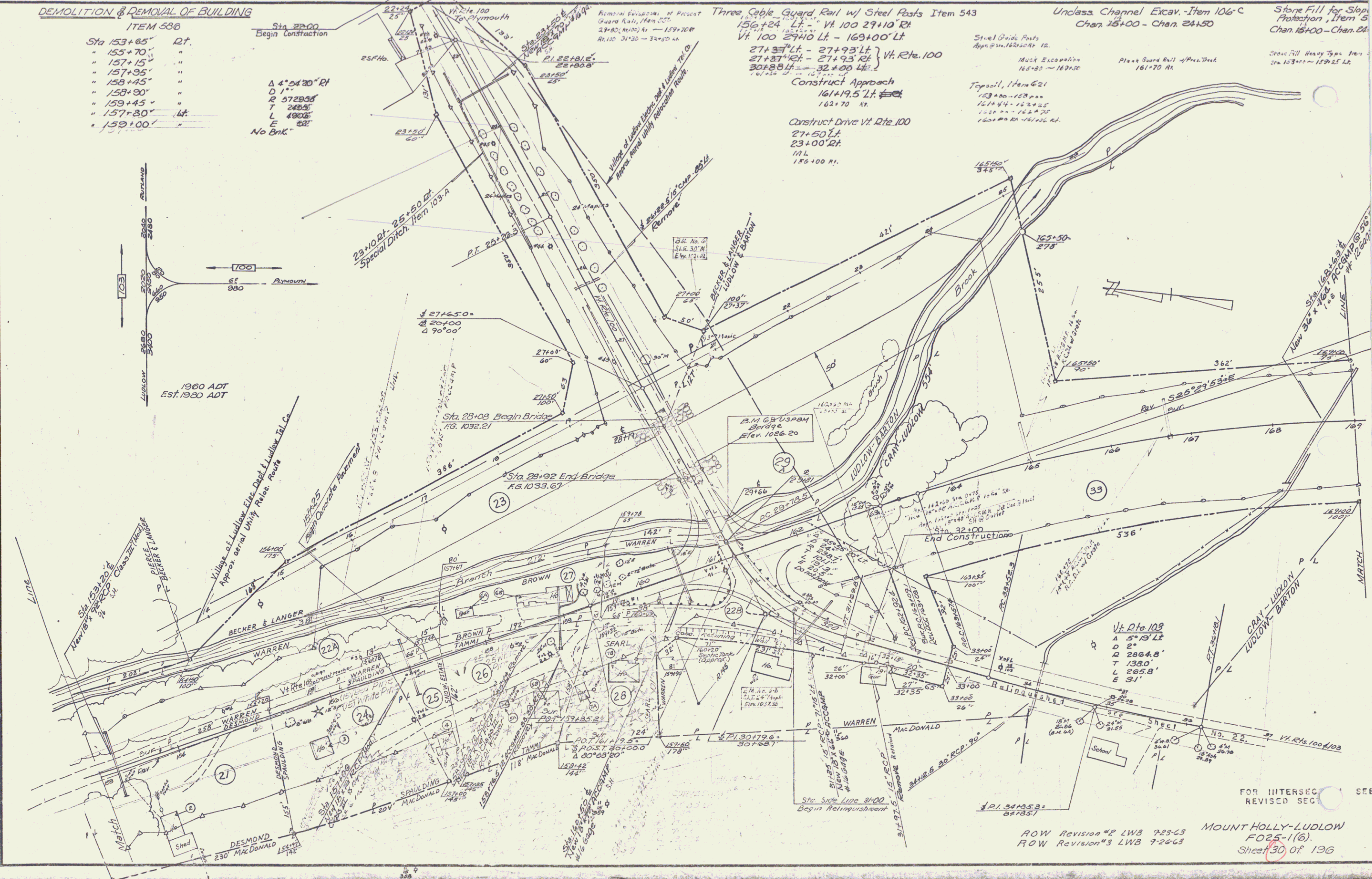
Muck Excavation
165+85 - 169+50

Place Guard Rail w/ Posts
161+70 Rt.

Stone Fill for Slope Protection, Item 5

Chan. 15+00 - Chan. 24+50

Stone Fill Heavy Type
163+00 - 179+25 Lt.



Vt. Rte 109
A 5' 13' Lt
D 2'
T 2804.8'
L 1380.0'
E 31'

FOR INTERSEC SEE REVISION SEC

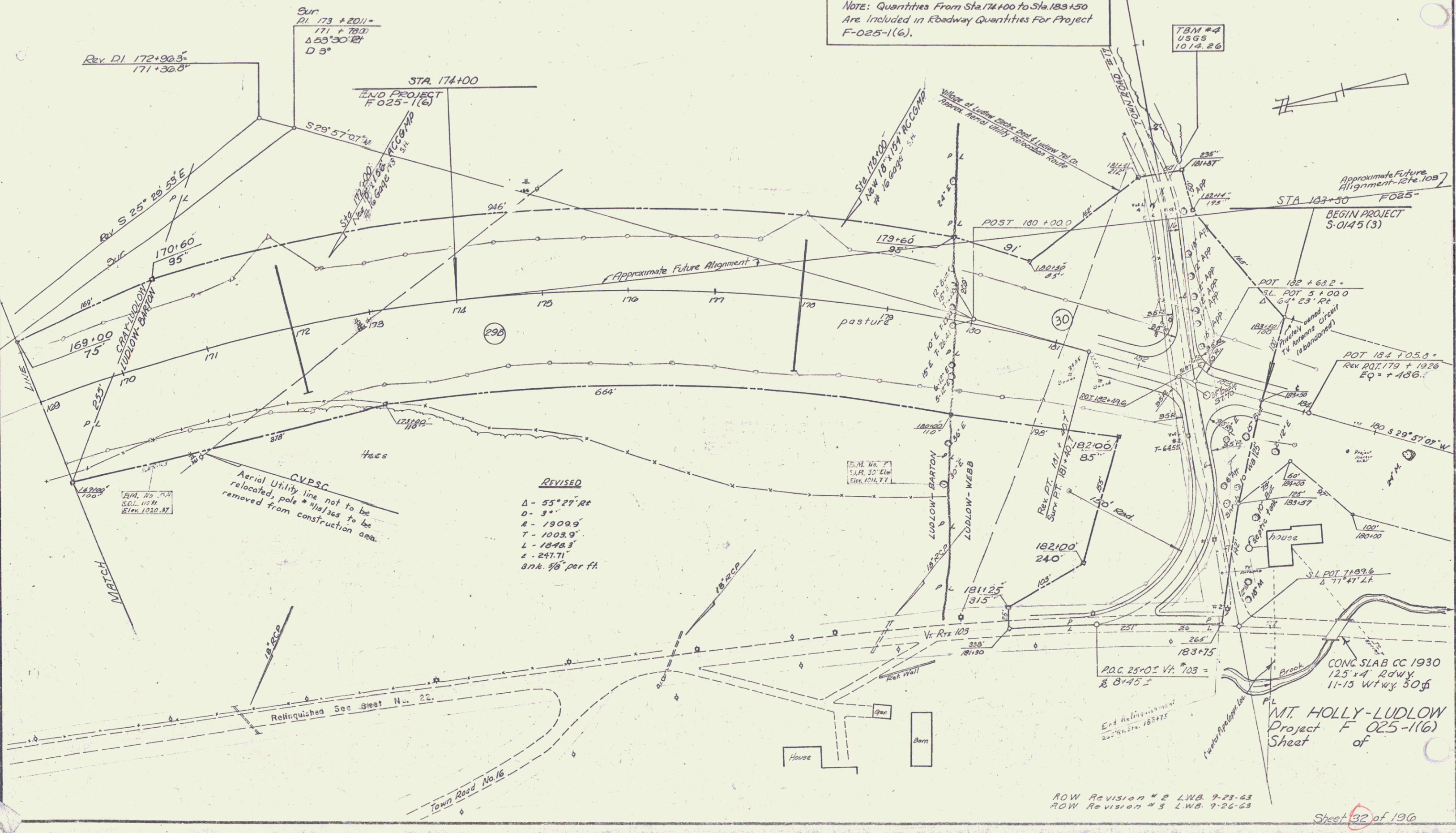
ROW Revision #2 LWB 7-23-63
ROW Revision #3 LWB 7-26-63
MOUNT HOLLY-LUDLOW
FO25-1(6)
Sheet 30 of 196

THREE CABLE GUARD RAIL w/ STEEL POSTS ITEM 543
169+00' LT - 182+00' LT

CONSTRUCT APPROACH
LT. E RT.
182+68.2'

Small Guide Posts
R/L = 2 Sta 182+68.2 RT. ?
R/L = 2 Sta 182+68.2 LT. 14

NOTE: Quantities From Sta. 174+00 to Sta. 183+50
Are Included in Roadway Quantities For Project
F-025-1(6).



Aerial Utility line not to be
relocated, pole * utilities to be
removed from construction area.

REVISED
Δ - 55° 27' Rt
D - 3'
R - 19099'
T - 1003.9'
L - 1848.3'
E - 247.71'
3 in. x .98" per ft.

ROW Revision # 2 LWB. 9-23-63
ROW Revision # 3 LWB. 9-26-63

Sheet 32 of 196

13