

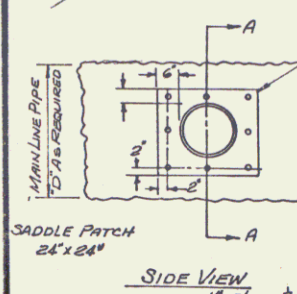
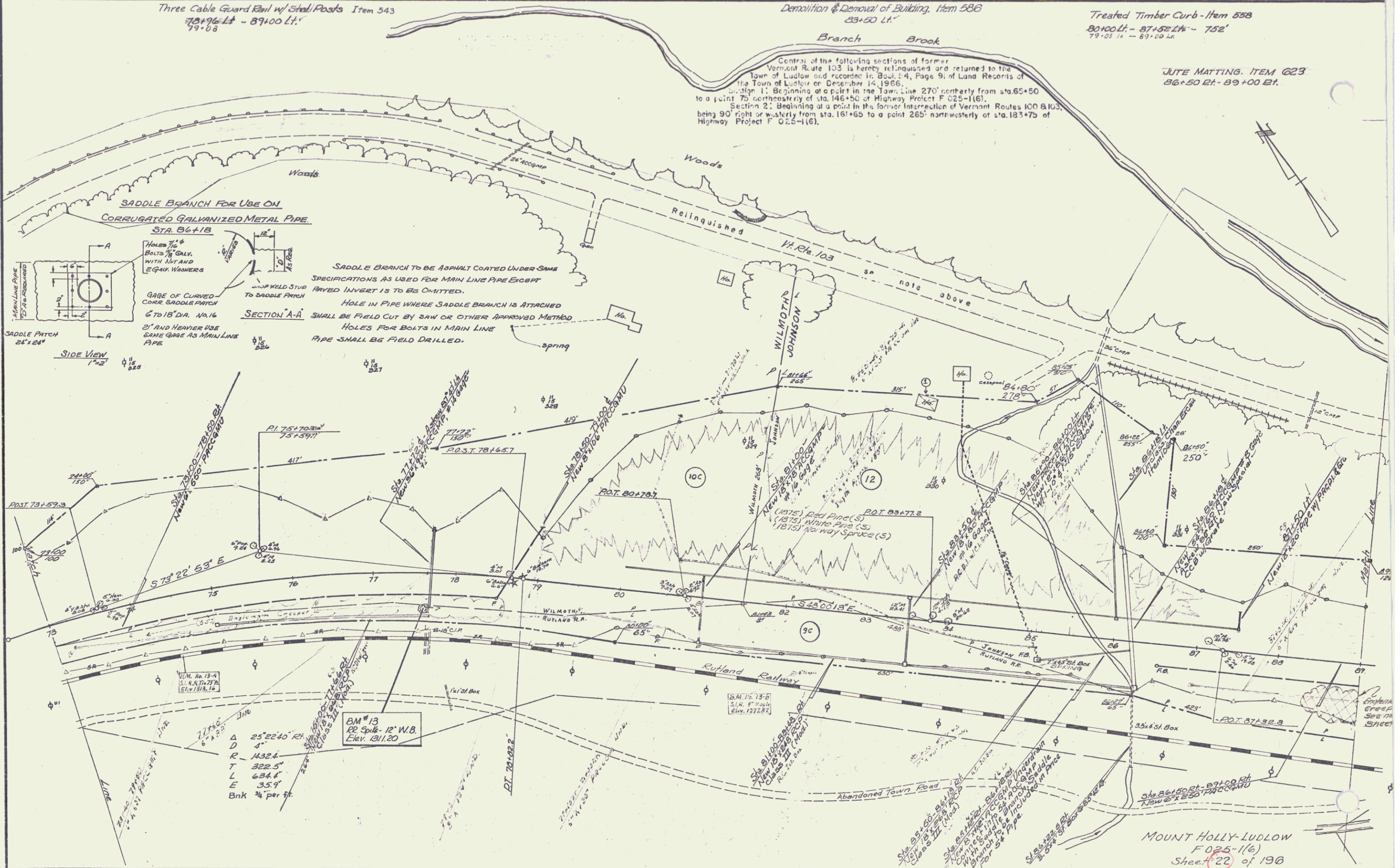
Three Cable Guard Rail w/ Steel Posts Item 543
78+96.44 - 89+00 Lt.
79+08

Demolition & Removal of Building, Item 586
83+50 Lt.

Treated Timber Curb - Item 558
80+00 Lt. - 87+52 Lt. - 752'
79+01 Lt. - 89+00 Lt.

JUTE MATTING, ITEM 623
86+50 Lt. - 89+00 Lt.

Center of the following sections of former Vermont Route 103 is hereby relinquished and returned to the Town of Ludlow and recorded in Book 4, Page 9, of Land Records of the Town of Ludlow on December 14, 1966.
Section 1: Beginning at a point in the Town Line 270' northerly from sta. 65+50 to a point 75' westerly of sta. 146+50 of Highway Project F 025-1(6).
Section 2: Beginning at a point in the former intersection of Vermont Routes 100 & 103, being 90' right or westerly from sta. 161+65 to a point 265' northwesterly of sta. 183+75 of Highway Project F 025-1(6).



SADDLE BRANCH FOR USE ON CORRUGATED GALVANIZED METAL PIPE
STR. 6x18
Holes 1/2" dia. bolts 1/2" dia. with nuts and washers
GAGE OF CURVED-CORR. SADDLE PATCH 6" TO 18" DIA. NO. 16
3" AND HEAVIER USE SAME GAGE AS MAIN LINE PIPE
SADDLE PATCH 24" x 24"
SIDE VIEW 1" = 2'
SADDLE BRANCH TO BE ASPHALT COATED UNDER SAME SPECIFICATIONS AS USED FOR MAIN LINE PIPE EXCEPT PAVED INVERT IS TO BE OMITTED.
HOLE IN PIPE WHERE SADDLE BRANCH IS ATTACHED SHALL BE FIELD CUT BY SAW OR OTHER APPROVED METHOD
HOLES FOR BOLTS IN MAIN LINE PIPE SHALL BE FIELD DRILLED.

BM #13
22 Spk. 12" W.B.
Elev. 811.20
D 4'
R 1432.6'
T 322.5'
L 634.6'
E 35.9'
Bnk 3/4 per ft.

MOUNT HOLLY-LUDLOW
F 025-1(6)
Sheet 22 of 196