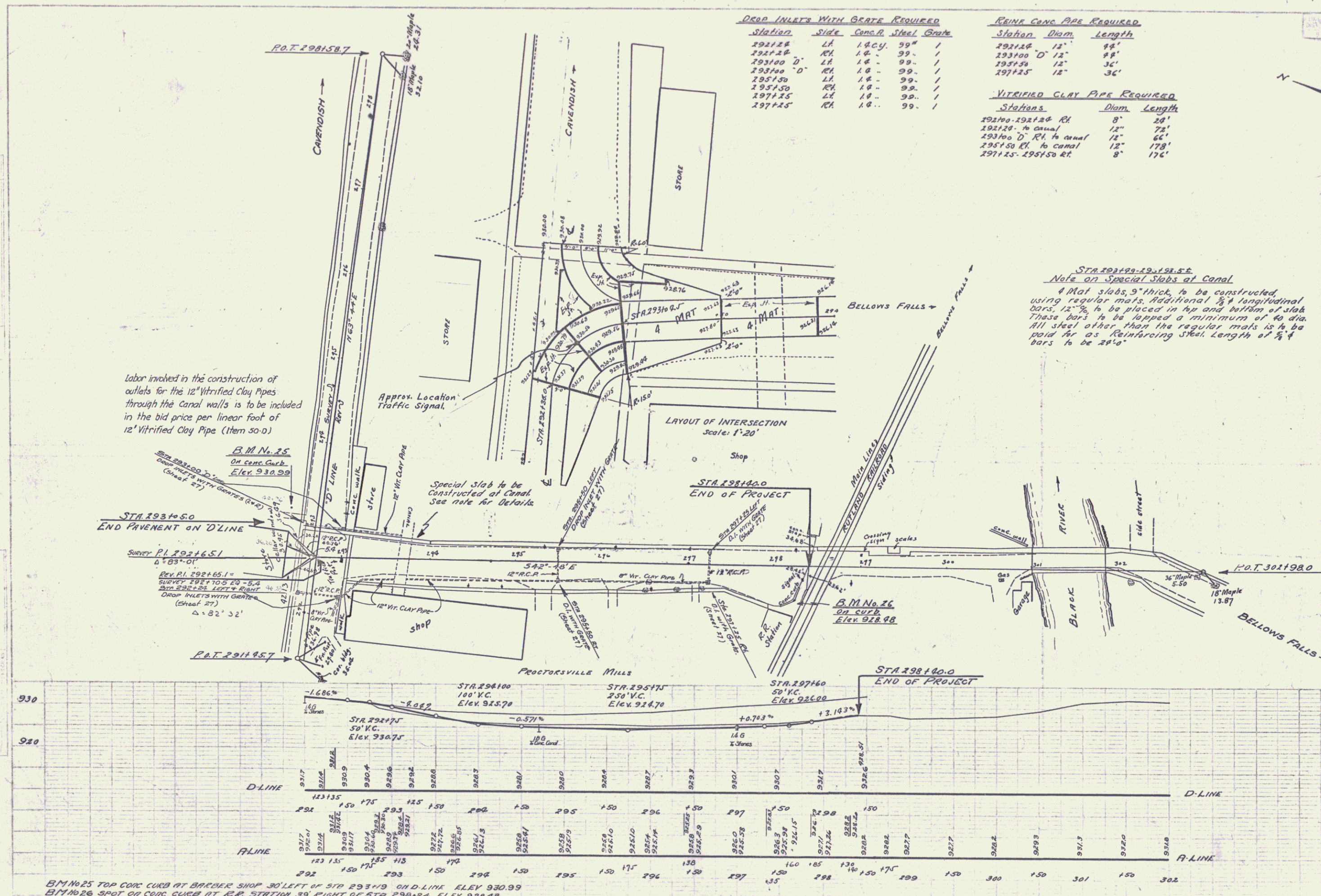


C.E. Palmer
 10/17/24
 121A 1930 20 57

C.E. Palmer
 10/17/24
 121A 1930 20 57



DEAD INLETS WITH GATE REQUIRED

Station	Side	Conc. R.	Steel	Gate
292+24	LH	1.0	99"	1
292+24	RH	1.0	99"	1
293+00	D	1.0	99"	1
293+00	RH	1.0	99"	1
295+50	LH	1.0	99"	1
295+50	RH	1.0	99"	1
297+25	LH	1.0	99"	1
297+25	RH	1.0	99"	1

REINFC CONC PIPE REQUIRED

Station	Diam.	Length
292+24	12"	48'
293+00	12"	48'
295+50	12"	36'
297+25	12"	36'

VITRIFIED CLAY PIPE REQUIRED

Stations	Diam.	Length
292+24-292+24 RH	8"	20'
292+24 to canal	12"	72'
293+00 D RH to canal	12"	66'
295+50 RH to canal	12"	178'
297+25-295+50 RH	8"	176'

STA 293+90-293+50
 Note on Special Slabs at Canal
 4 Mat slabs, 9" thick, to be constructed, using regular mats. Additional 3/4" longitudinal bars, 12" o.c. to be placed in top and bottom of slab. These bars to be lapped a minimum of 40 dia. All steel other than the regular mats is to be paid for as Reinforcing Steel, length of 3/4" bars to be 28' o.c.

BM No 25 TOP CONC CURB AT BREADER SHOP 30' LEFT OF STA 293+19 ON D-LINE ELEV 930.99
 BM No 26 SPOT ON CONC CURB AT R.R. STATION 35' RIGHT OF STA 298+24 ELEV 929.48

SERIES F No. 121A
 SHEET 20 OF 57