

**NEW CONCRETE GRAVITY CURB REQUIRED**

STATIONS	LEK	LENGTH	CONC. A
279+40-279+90	L	50'	4.3 cy

**NEW CONC CURB AND GUTTER REQUIRED**

STATIONS	WIDTH	CURB HEIGHT	CONC. A	REIN. STEEL
279+90-290+50	2'-0"	0'-6"	67.4 cy	800#

**NEW DROP INLETS REQUIRED**

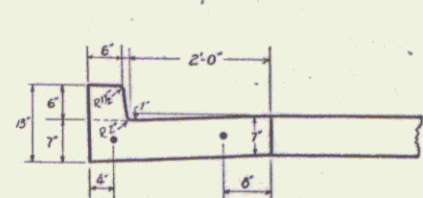
STATION	L or R	CONC. A	REIN. STEEL	DI GRATE
287+50	L	2.8 cy	19.8 lbs	2
287+50	R	1.4 "	9.9 "	1
290+75	R	1.4 "	9.9 "	1

**REIN. CONC PIPE REQUIRED**

Station	Diarm	Length
287+50	15"	15'

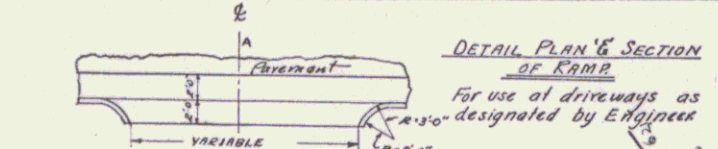
**VITRIFIED CLAY PIPE REQUIRED**

Stations	Diarm	Length
290+75-291+00 R.I.	8"	126'



JOINTS IN CURB AND GUTTER NOT TO EXCEED 6"00" UNLESS PREPROVIDED BITUMINOUS EXPANSION JOINT FILLED, 1/2" THICK, TO BE PLACED AFTER EVERY 5TH SECTION. REMAINING JOINTS TO BE EITHER BUTT JOINTS PAINTED WITH BITUMINOUS PAINT OR CUT PLATE JOINTS.

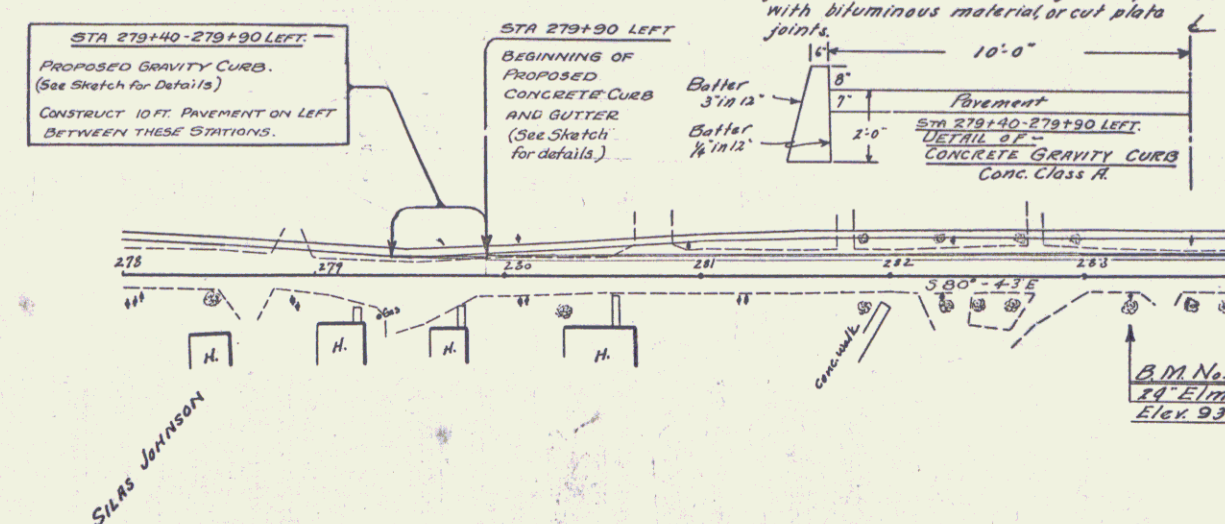
**CONCRETE CURB & GUTTER**  
Sta 279+90-290+50 LH  
Conc. Class A  
Section Area 170 sq. ft.



**DETAIL PLAN & SECTION OF RAMP**  
For use of driveways as designated by Engineer

REV. CURVE No. 43  
D = 35°-33'  
R = 955.4  
T = 306.3  
L = 456  
E = 456  
CURVE NOT BANNED OR WIDENED

Joints in Gravity Curb not to exceed 6'0" apart. Preprovided bituminous expansion joint filler, 1/2" thick, to be placed after every third section. Remaining joints to be either butt joints painted with bituminous material or cut plate joints.



B.M. No. 22  
10' E.M.  
Elev. 932.67

18' High  
34.77' to 24' High  
23.75'

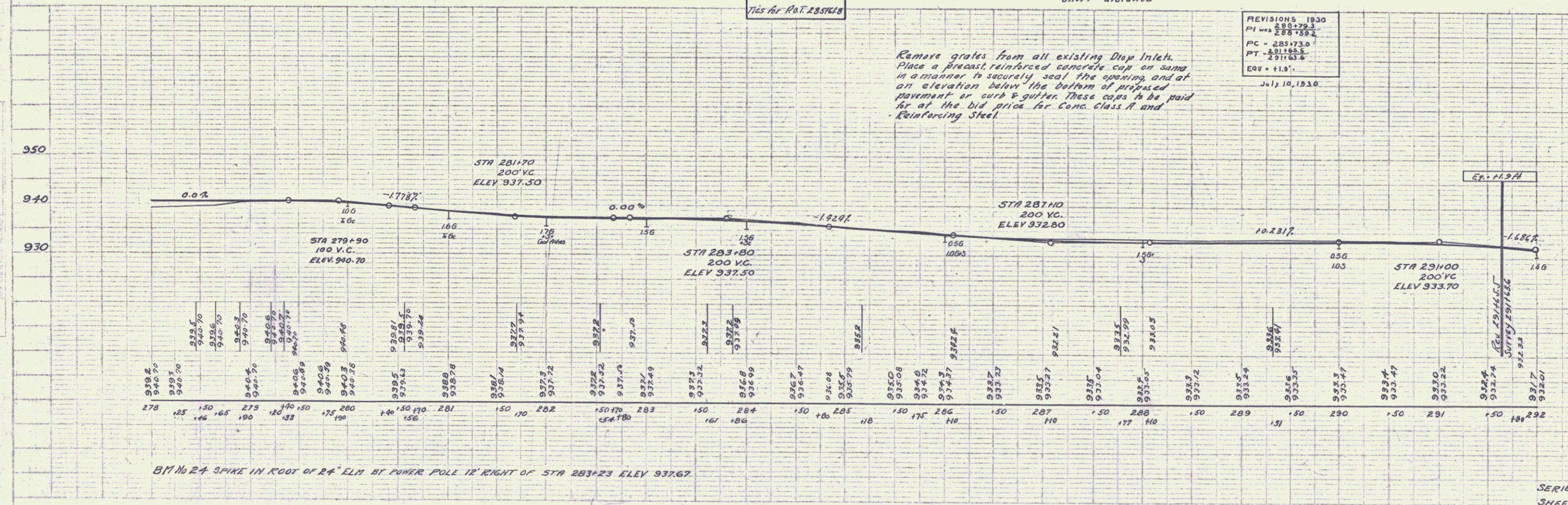
Inaccessible  
P.I. 288163.3  
288164.2  
Δ = 35°-02'  
D = 6'

Sta 287+50  
Min. grade of pipe left last three feet to be constructed at a steeper grade to avoid the water setting back in culvert for more than a short distance.

PROCTORSVILLE MILLS

REVISIONS 1930  
PI was 288179.3  
PC = 285173.0  
PT = 291185.5  
Elev = 113'  
July 10, 1930

Remove grates from all existing Drop Inlets. Place a precast reinforced concrete cap on same in a manner to securely seal the opening and at an elevation below the bottom of proposed pavement or curb & gutter. These caps to be paid for at the bid price for Conc. Class A and Reinforcing Steel.



B.M. No 24 SPIKE IN FOOT OF 24" E.M. BY POWER POLE 12' RIGHT OF STA 283+23 ELEV 932.67.

SERIES F No. 121A  
SHEET 10 OF 57