

**WOOD GUARD RAIL REQUIRED**

CULV. STA.	LEFT	RIGHT
237+34	24'	24'
245+87	24'	24'
247+55	24'	24'

**CABLE GUARD RAIL REQUIRED**

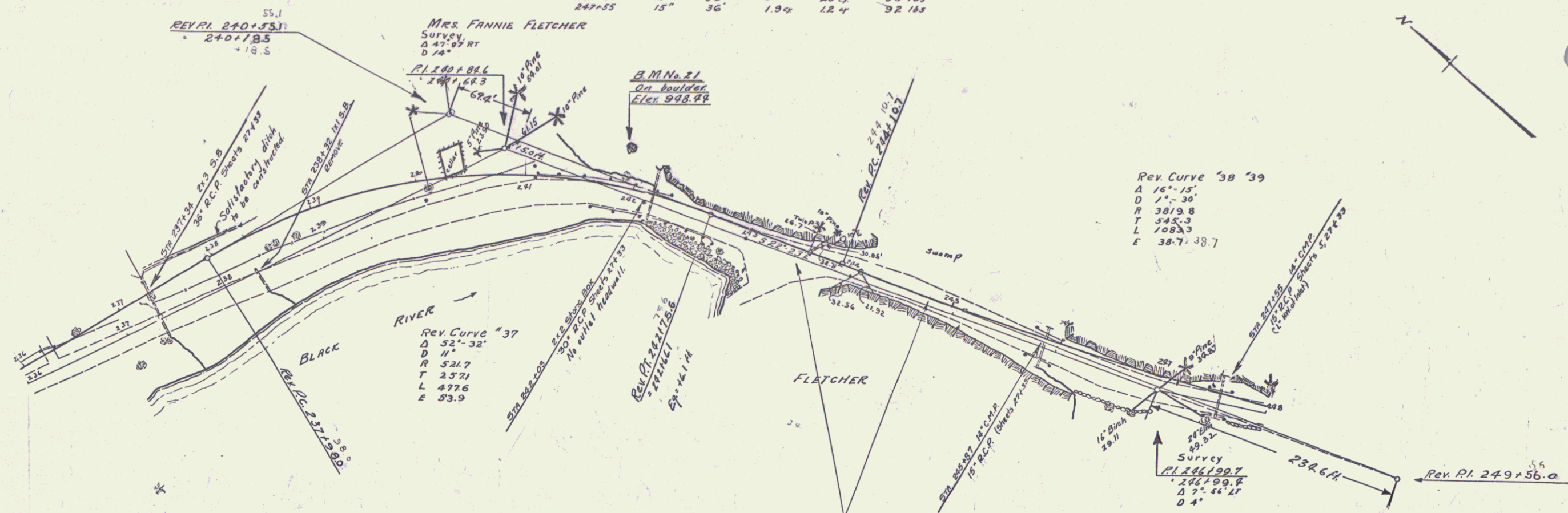
STATIONS	LEFT	RIGHT
24118-24218	160'	136'
24150-24218		

**NEW REINFORCED CONCRETE PIPE CULVERTS REQUIRED**

CULV. STA.	DIAM.	LENGTH	CONC. C	REIN. STEEL
237+34	36"	40'	4.0cy	58 lbs
242+03	30"	52'	1.8cy	29 lbs
245+87	15"	36'	2.3cy	33 lbs
247+55	15"	36'	1.9cy	32 lbs

STATE: ILL. COUNTY: FISCAL YEAR: 1930 SHEET NO.: 16 OF 57

S. E. P. ...

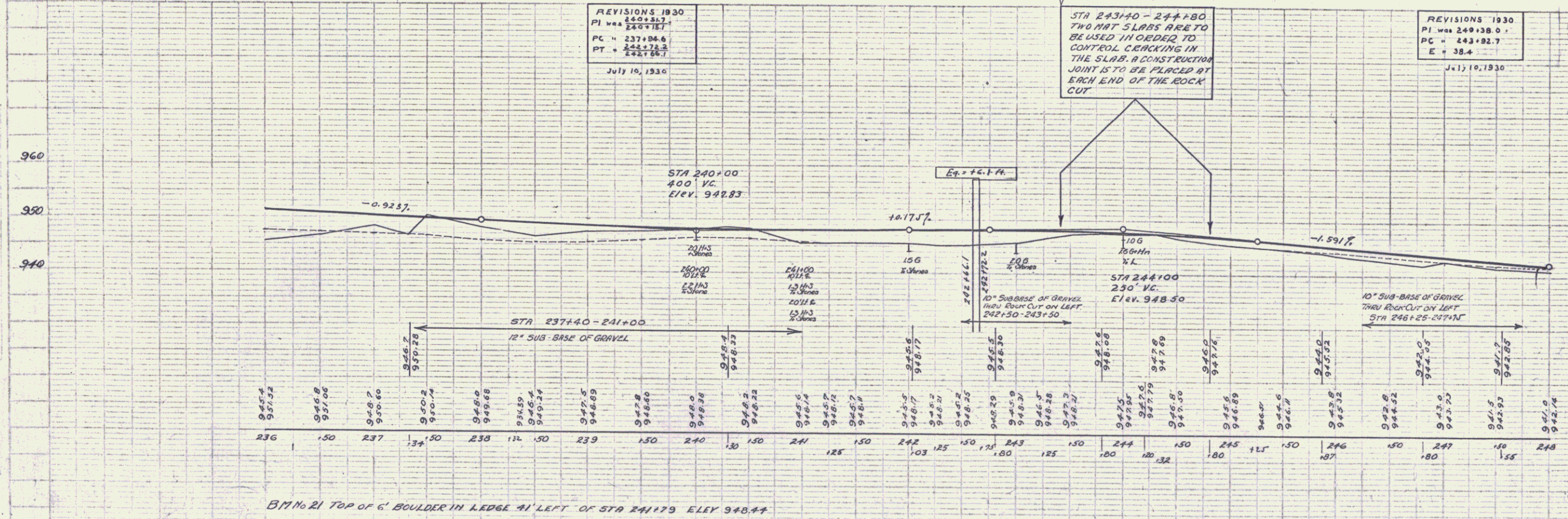


Rev. Curve '38 '39  
 A 16'-15"  
 D 1'-30"  
 R 3819.8  
 T 545.3  
 L 1082.3  
 E 38.7, 38.7

REVISIONS 1930  
 PI was 240+31.7  
 PC = 237+86.6  
 PT = 242+78.3  
 E + 53.9  
 July 10, 1930

STA 243+40 - 244+80  
 TWO 18" SLABS ARE TO BE USED IN ORDER TO CONTROL CRACKING IN THE SLAB. A CONSTRUCTION JOINT IS TO BE PLACED AT EACH END OF THE ROCK CUT

REVISIONS 1930  
 PI was 249+38.0  
 PC = 243+82.7  
 E + 38.4  
 July 10, 1930



B.M. No. 21 TOP OF 6' BOULDER IN LEDGE 41' LEFT OF STA 241+79 ELEV. 948.44

SERIES F No. 121A  
 SHEET 16 OF 57