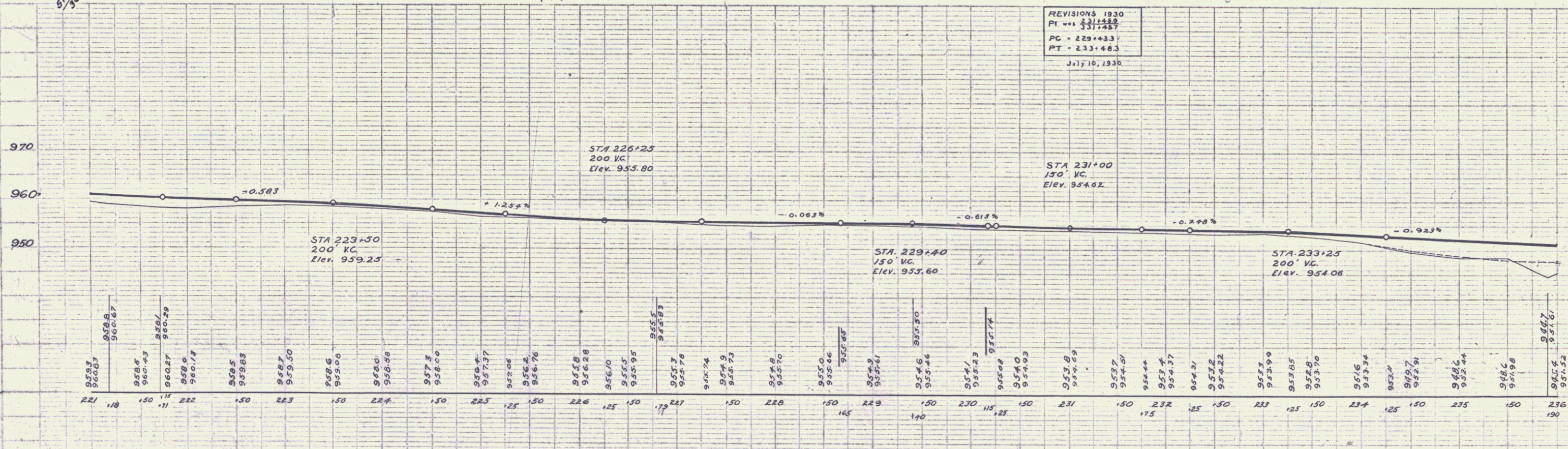
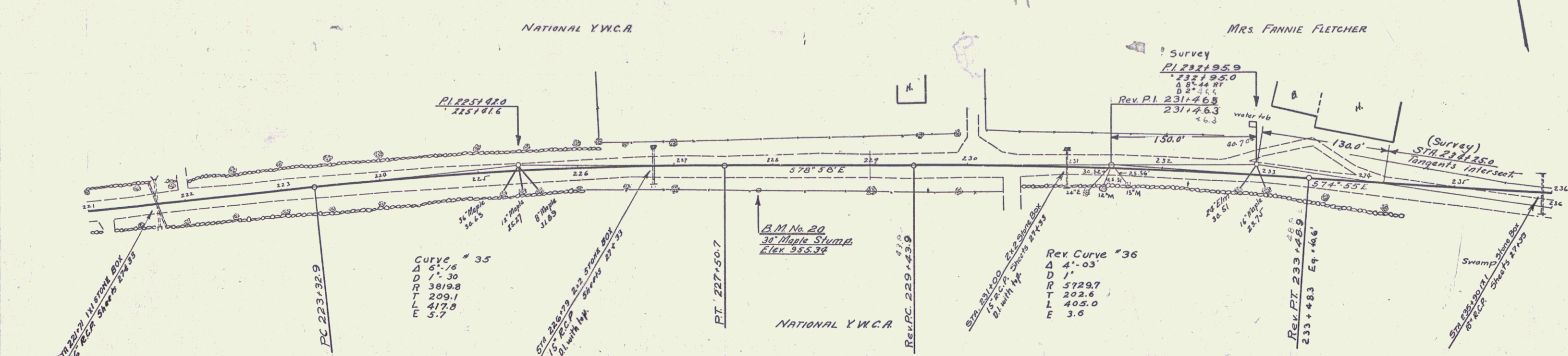


WOOD GUARD RAIL REQUIRED			CABLE GUARD RAIL REQUIRED			NEW REINF CONC PIPE CULVERTS REQUIRED				
CULV STA	LEFT	RIGHT	STALLIONS	LEFT	RIGHT	CULV STA	DIAM	LENGTH	CONC	REINF STEEL
226+79	—	24'	—	—	—	221+73	36"	48'	4.0%	33 lbs
231+00	—	24'	—	—	—	226+79	15"	38'	1.5%	174 lbs
235+90	24'	24'	40'	48'	—	231+00	15"	40'	1.5%	174 lbs
						235+90	18"	40'	3.0%	33 lbs

WOOD GUIDE POSTS REQUIRED		
CULV STA	LEFT	RIGHT
226+79	—	—
231+00	1	—



B.M. No 20 SPIKE IN 30' MAPLE STUMP 23' RIGHT OF STA 227+85 ELEV 955.34