

WOOD GUIDE POSTS REQUIRED

QUAL. STA.	LEFT	RIGHT
210+15	1	1

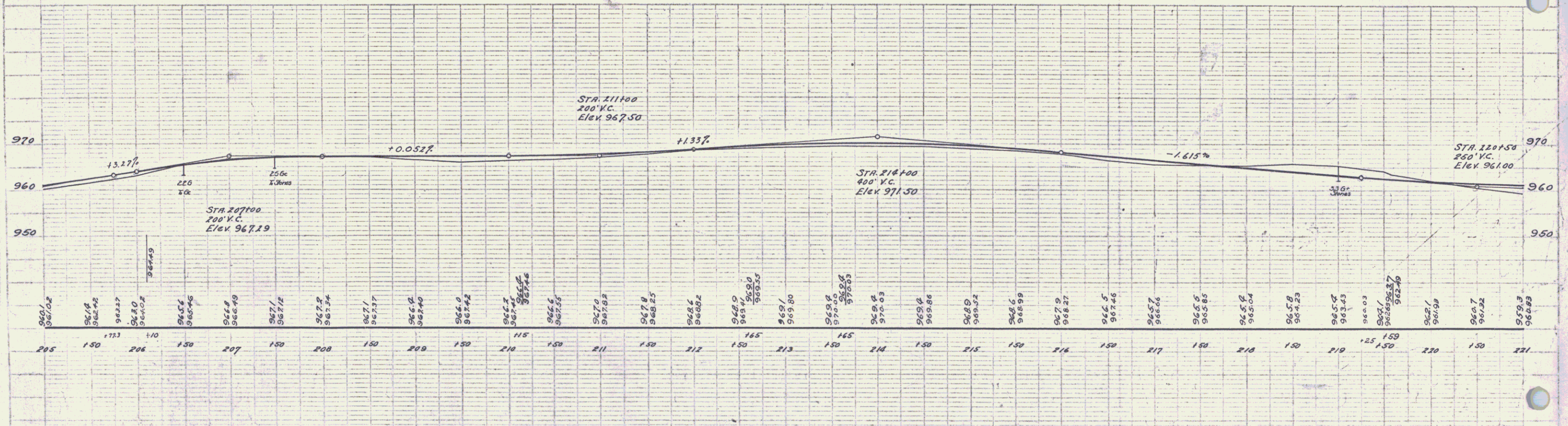
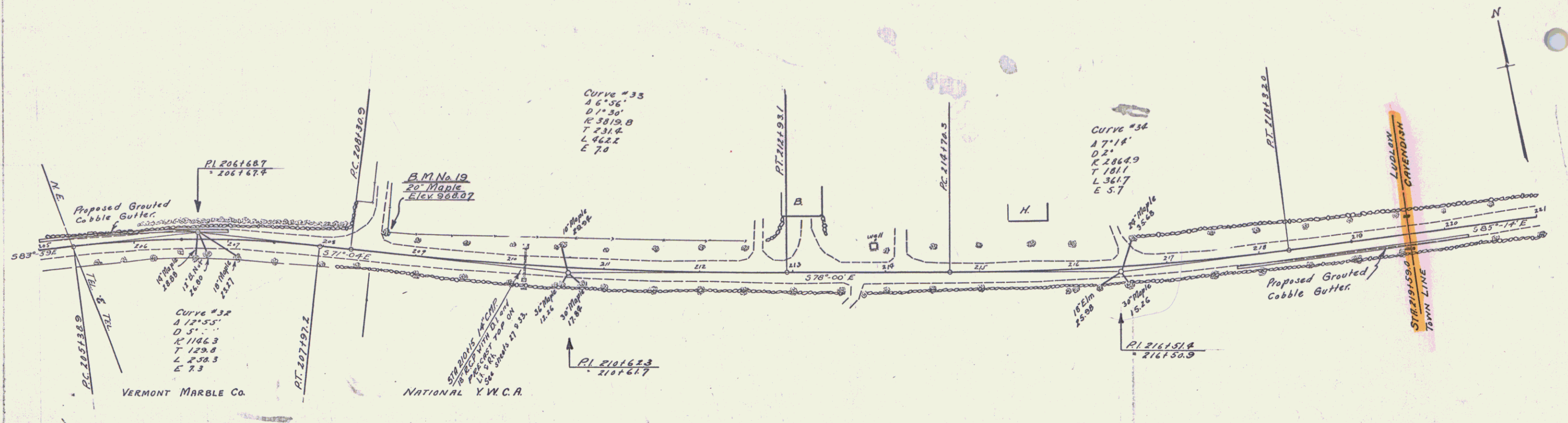
KEINING COM. PIPE CULVERTS REQUIRED

CULV. STA.	DIAM.	LENGTH	CONCR. CONC.	KEINING STALL
210+15	10"	44'	3.0%	15
				231

GRAVEL COBBLE GUTTER REQUIRED

STATIONS	LOC.	LENGTH	WIDTH	DEPTH
205+00-207+00	L	200'	3'-0"	6" MIN.
217+25-220+25	R	250'	3'-0"	6" MIN.

STATE	PROJECT NO.	FISCAL YEAR	SHEET NO.	TOTAL SHEETS
VT	121A	1930	74	37



B.M. No 19 SPINE IN ROOT OF 20" MAPLE AT SIDE ROAD 19' LEFT OF STA 200+62. ELEV 968.07

SERIES F No 121-A  
SHEET 74 OF 57