

WOOD GUARD RAIL REQUIRED	
STATION	RIGHT
183+00	2'

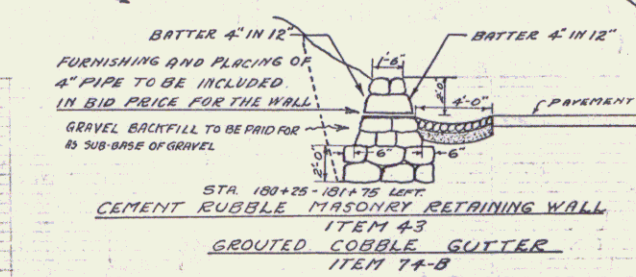
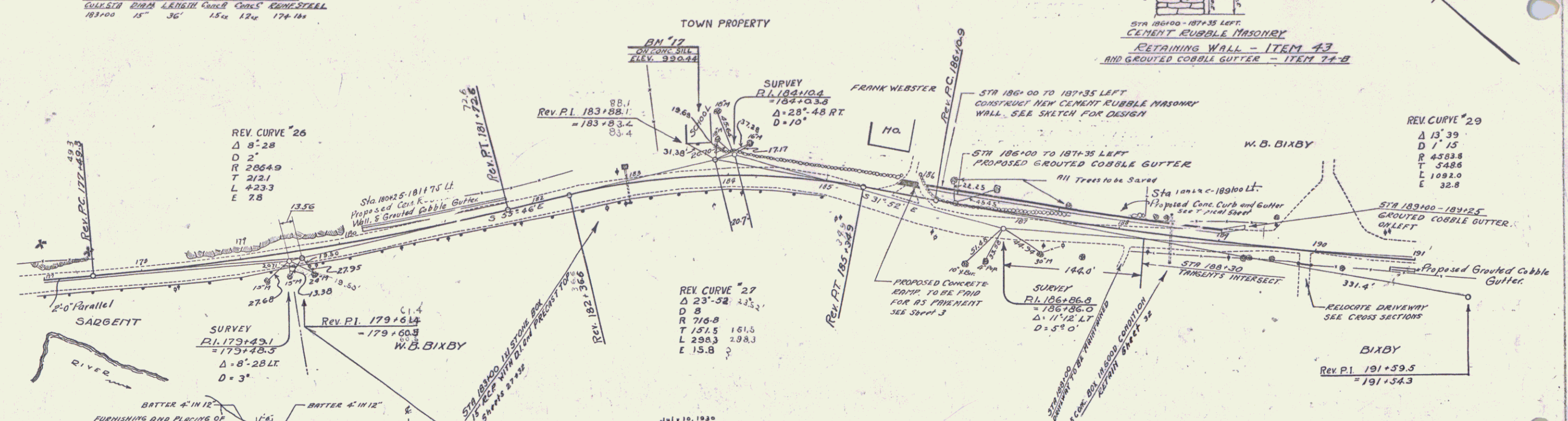
CABLE GUARD RAIL REQUIRED	
STATION	RIGHT
177+00 - 178+53	153
179+50 - 182+26	376

GROUTED COBBLE GUTTER REQUIRED	
STATION	RIGHT
180+00 - 180+00	200'
188+31 - 188+79	48'

CEMENT RUBBLE MASONRY RETAINING WALL	
STATION	RIGHT
186+00 - 187+35	125'
187+35 - 187+75	150'

NEW REINFORCED CONCRETE PIPE CULVERTS REQUIRED	
STATION	RIGHT
183+00	15" x 36"
183+00	15" x 36"
183+00	15" x 36"
183+00	15" x 36"

REVISED STATE ROAD AND TOLLAGE DISTRICT NO. YEAR NO. SHEETS
 121 A 1930 12 57



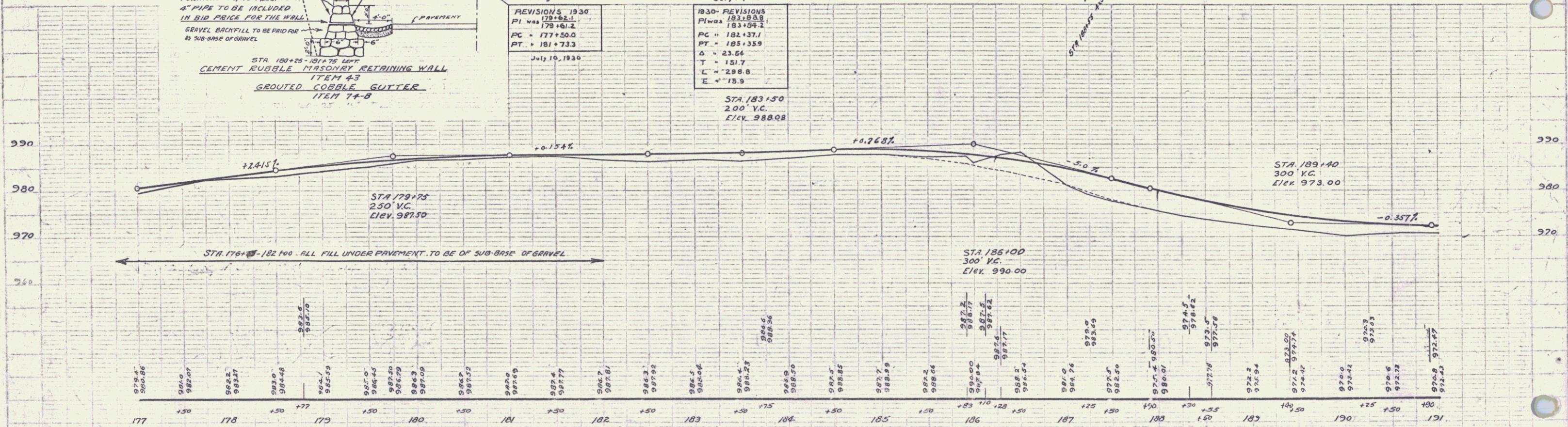
July 10, 1930

1830- REVISIONS
PI was 179+63.1
PC = 177+50.0
PT = 181+73.3

July 10, 1930

1830- REVISIONS
PI was 183+83.8
PC = 181+37.1
PT = 185+35.9
Delta = 23.64
T = 151.7
L = 298.8
E = 15.9

STA. 183+50
 200' V.C.
 Elev. 988.08



B.M. No 17 SPOT IN CONG. WINDOW SILL AT SCHOOL 31.5' LEFT STA 183+75 ELEV 990.44

SERIES F No. 121-A
 SHEET 12 OF 57