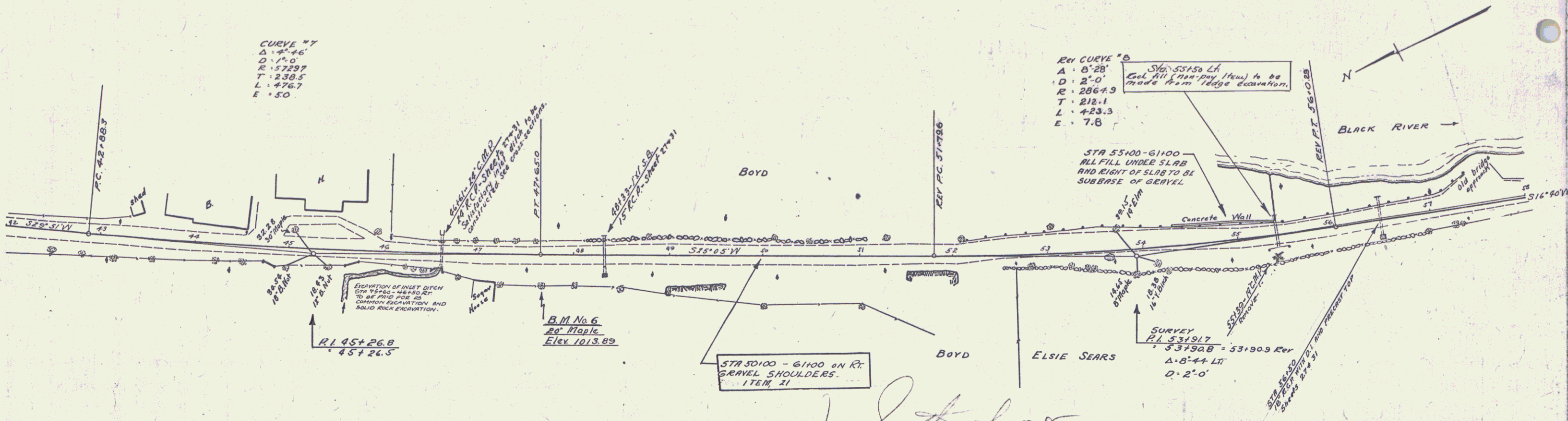


WOOD GUARD RAIL REQUIRED			CABLE GUARD RAIL REQUIRED			WOOD GUIDE POSTS REQUIRED			NEW REIN CONC PIPE CULVERTS REQUIRED				
CULV STA	LEFT	RIGHT	STATIONS	LEFT	RIGHT	CULV STA	LEFT	RIGHT	CULV STA	DIAM	LEN	CONC	REIN. STEEL
46161	24'	24'	48120 TO 57100	800'	—	40133	—	1	46161	24"	30'	2.4	54.161
			57460 TO 58100	20'	—	56150	—	1	48123	18"	40'	15.12	174.161
									56150	18"	40'	15.12	174.161

FED. ROAD DIST. NO. 121A 1930 7 57

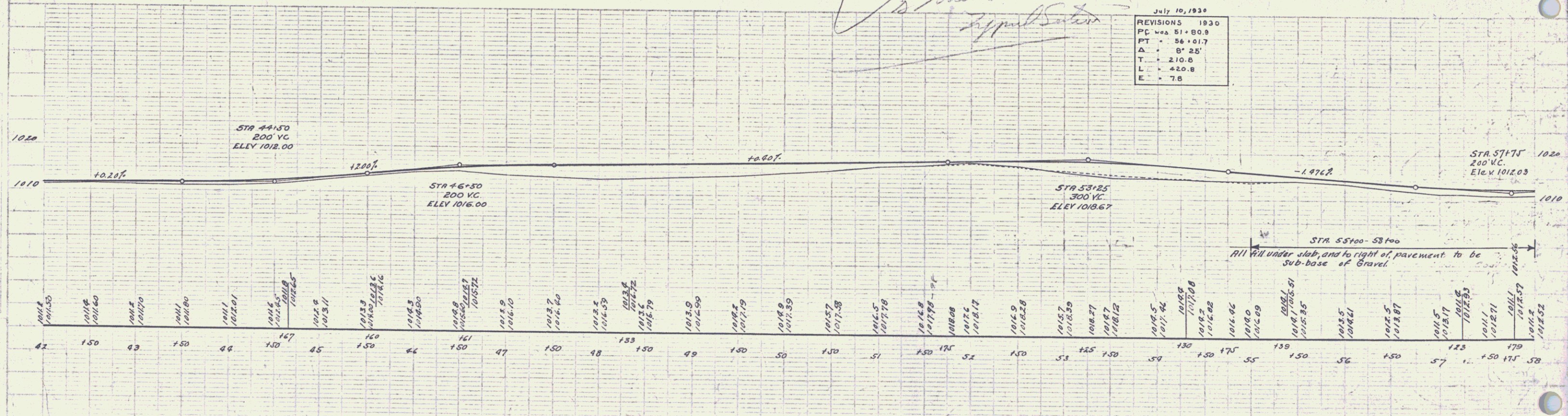
CURVE #7
 Δ = 4° 46'
 D = 150'
 R = 5729.7'
 T = 238.5'
 L = 476.7'
 E = 50'

REV CURVE #8
 Δ = 6° 28'
 D = 212.1'
 R = 2864.9'
 T = 212.1'
 L = 423.3'
 E = 7.8'



J.S. the show or support station

July 10, 1930
 REVISIONS 1930
 PC = 51+80.8
 PT = 56+01.7
 Δ = 8° 25'
 T = 210.6'
 L = 450.8'
 E = 7.6'



B.M. No 6 - Spike in 20' Maple, 30' right of Sta. 47163. Elev 1013.80

SERIES F No. 121-A SHEET 7 OF 57

S.E. Blinn
 Surveyor

Apr 17, 30
 S.E. Blinn
 Surveyor

6