

WOOD GUARD RAIL REQUIRED

| CONV. STA | LEFT | RIGHT |
|-----------|------|-------|
| 16+25 | 24' | 24' |
| 20+90 | 24' | 24' |

CABLE GUARD RAIL REQUIRED

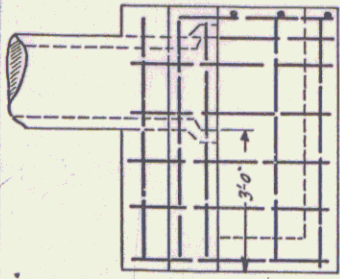
| STATIONS | LEFT | RIGHT |
|----------------|------|-------|
| 22+22 TO 23+50 | 120' | — |

WOOD GUIDE POSTS REQUIRED

| CONV. STA | LEFT | RIGHT |
|-----------|------|-------|
| 23+36 | — | 1 |
| 20+90 | — | 1 |

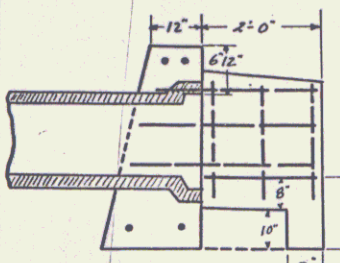
NEW REIN. CONC. PIPE CULVERTS REQUIRED

| STATION | DIAM. | LENGTH | CONC. II | CONC. I | REIN. STEEL |
|---------|-------|--------|----------|---------|-------------|
| 16+12 | 15" | 44' | 13 cy | 12 cy | 92 lbs |
| 23+36 | 15" | 40' | 13 cy | 12 cy | 174 " |
| 20+90 | 15" | 36' | 13 cy | 12 cy | 174 " |

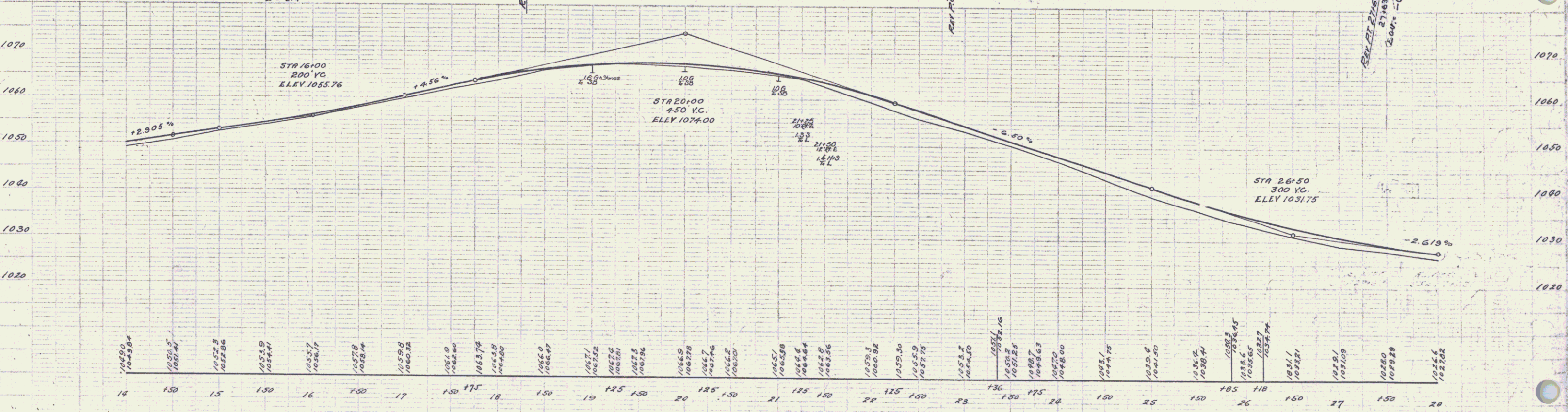
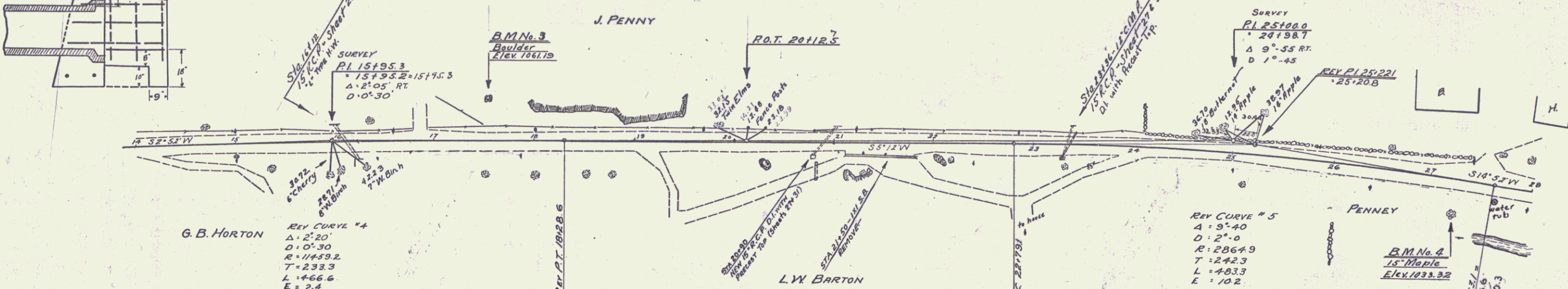


DETAIL OF L-TYPE HEADWALL
Concrete Class B

All Rein. Steel to be $\frac{3}{8}$ " dia. bars, 12%
Quantities for 18" Pipe
Conc. Class B, 1.9 cy
Rein. Steel 75 lbs.



C.E. Plummer
Apr 1930
Apr 1930



B.M. No. 3 - Boulder, 40' left of Sta 17+54. Elev 1061.19
B.M. No. 4 - Spike in root of 15' Maple, 32' right of Sta 27+20. Elev 1033.32