

INDEX OF SHEETS

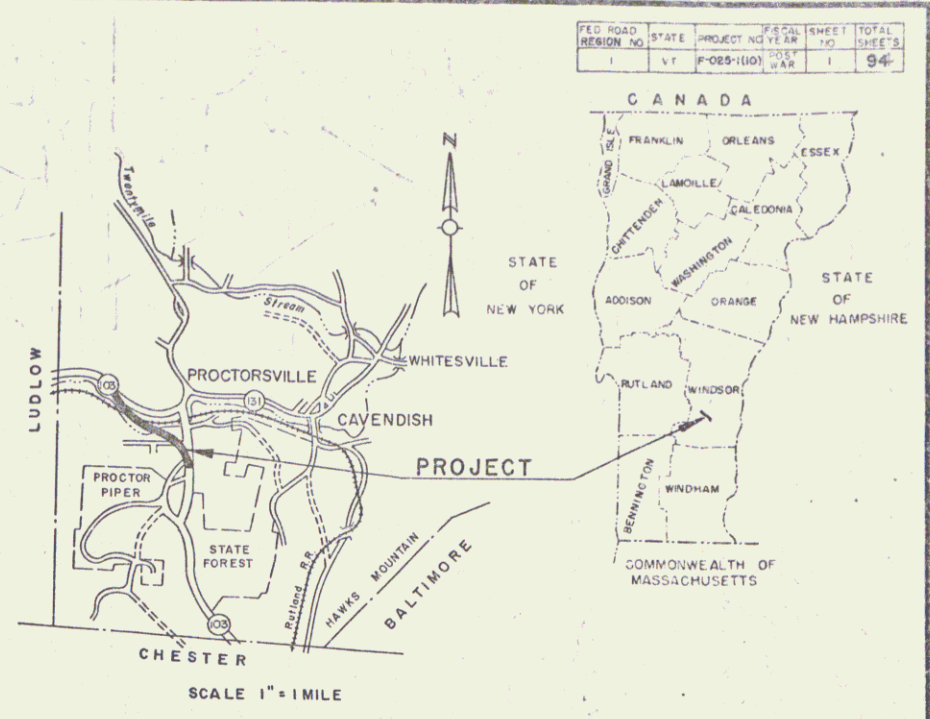
| | | | | |
|-----------|--|-------------|---|--|
| SHEET NO. | 1 | TITLE SHEET | 34 | BLACK RIVER BRIDGE - ABUT. NO. 1 & NO. 2 DETAILS |
| 2 | TYPICAL CROSS-SECTIONS OF IMPROVEMENT | 35 | BLACK RIVER BRIDGE - REINFORCING STEEL SCHEDULE | |
| 3 | TYPICAL CROSS-SECTIONS OF APPROACHES | 36 | STANDARD SHEET SB-45 - SQUARE - 57, APPROACH SLABS FOR SQUARE BRIDGES | |
| 4 | QUANTITY SHEET (ITEMS) | 37 | STANDARD SHEET SB-20-56, DETAILS FOR W.F. BEAMS | |
| 5 | ITEM DETAIL & DRAINAGE SHEET | 38 | STANDARD SHEET SB-30-56, SOFT COMPOSITE BEAM BRIDGES | |
| 6 | EARTHWORK SHEET | 39 | STANDARD SHEET SB-42-56, SOFT COMPOSITE BEAM BRIDGES | |
| 7 | EARTHWORK SUMMARY | 40 | STANDARD SHEET SB-56-57 (1 OF 2) BRIDGE RAILING & GRANITE CURB | |
| 8 | EARTHWORK SUMMARY | 41 | CANAL BRIDGE - PRELIMINARY INFORMATION SHEET | |
| 9 - 15 | PLAN & PROFILE | 42 | CANAL BRIDGE - PLAN LAYOUT | |
| 16 | BOX CULVERT EXTENSION | 43 | CANAL BRIDGE - PROFILE SHEET | |
| 17 | BOX CULVERT REINFORCING STEEL SCHEDULE | 44 | CANAL BRIDGE - SUPERSTRUCTURE, ELEV. & FRAMING | |
| 18 | STANDARD SB-21-56 BOX CULVERTS | 45 | CANAL BRIDGE - SUPERSTRUCTURE, DECK DETAILS | |
| 19 | A-61 DRILLING AND BLASTING | 46 | CANAL BRIDGE - ABUTMENT DETAILS | |
| 20 | B-1 BANKING TABLES | 47 | CANAL BRIDGE - APPROACH SLABS | |
| 21 | B-5 TYPICAL SLOPE GRADING | 48 | CANAL BRIDGE - REINFORCING STEEL SCHEDULE | |
| 22 | B-6 MUCK EXCAVATION | 49 - 84 | ROAD SECTIONS | |
| 23 | B-10 EMBANKMENT ON SLOPE | 85 - 84 | CHANNEL SECTIONS | |
| 24 | B-16 ISLAND DESIGNS | 94 - A | PROTECTION OF RAILROAD SIGNS | |
| 25 | C-1 CURBS | | | |
| 26 | D-2 C.R.M. | | | |
| 27 | D-4 METAL END SECTIONS, FLUSHING BASINS | | | |
| 27A | D-8 R.C. D.I. AND P.C. COVER - D.I. BOTTOMS | | | |
| 27B | D-10 TOPS FOR D.I. W/GRANITE SLOPE EDGING | | | |
| 27C | D-11 DETAILS OF GRATES FOR D.I. | | | |
| 27D | E-1 BARRICADES, SIGN AND LIGHTS (ROADWAY) | | | |
| 27E | G-3 THREE CABLE GUARD RAIL | | | |
| 27F | G-4 STEEL MARKER POSTS | | | |
| 27G | J-1 PROJECT AND BOUNDARY MARKERS | | | |
| 28 | BLACK RIVER BRIDGE - PRELIMINARY INFORMATION SHEET | | | |
| 29 | BLACK RIVER BRIDGE - PLAN LAYOUT | | | |
| 30 | BLACK RIVER BRIDGE - PROFILE SHEET | | | |
| 31 | BLACK RIVER BRIDGE - PLAN OF CHANNEL IMPROVEMENT | | | |
| 32 | BLACK RIVER BRIDGE - SUPERSTRUCTURE DETAILS | | | |
| 33 | BLACK RIVER BRIDGE - PIER NO. 1 & NO. 2 DETAILS | | | |

STATE OF VERMONT
DEPARTMENT OF HIGHWAYS
PROPOSED IMPROVEMENT
FEDERAL AID PROJECT
TOWN OF CAVENDISH
COUNTY OF WINDSOR
VT. ROUTE 103
CAVENDISH-PROCTORSVILLE BYPASS

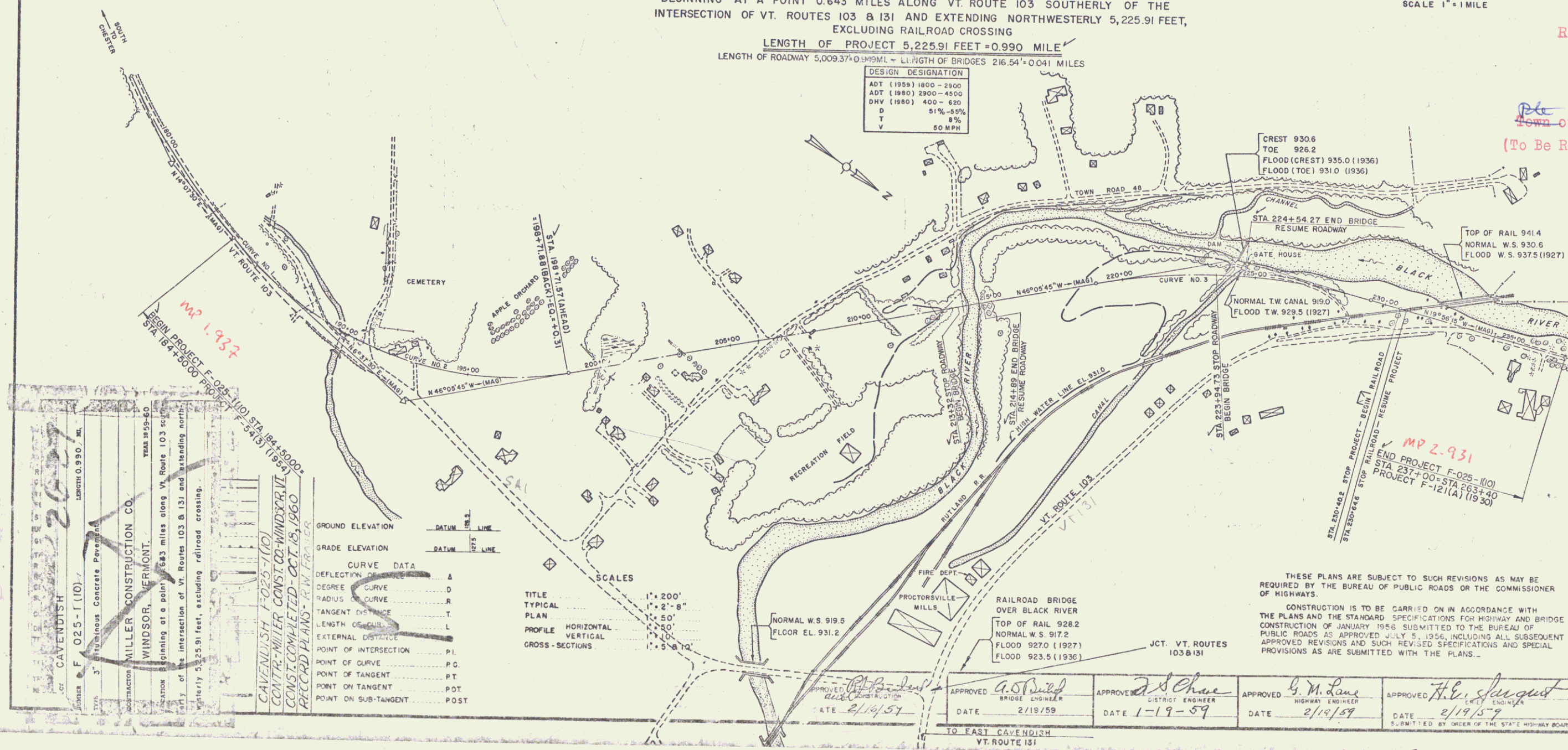
PROJECT: CAVENDISH F-025-1(10)
BEGINNING AT A POINT 0.643 MILES ALONG VT. ROUTE 103 SOUTHERLY OF THE INTERSECTION OF VT. ROUTES 103 & 131 AND EXTENDING NORTHWESTERLY 5,225.91 FEET, EXCLUDING RAILROAD CROSSING
LENGTH OF PROJECT 5,225.91 FEET = 0.990 MILE
LENGTH OF ROADWAY 5,009.37 + 0.1955 MILE - LENGTH OF BRIDGES 216.54 + 0.041 MILES

DESIGN DESIGNATION

| |
|------------------------|
| ADT (1958) 1800 - 2800 |
| ADT (1980) 2800 - 4500 |
| DHV (1960) 400 - 820 |
| D 91% - 95% |
| T 8% |
| V 50 MPH |



RIGHT-OF-WAY DIVISION
TOWN FILE
PERPETUAL
Town of Ut 103
(To Be Returned To R.O.W. Division)



CAVENDISH F-025-1(10)
3" Minimum Concrete Pavement
MILLER CONSTRUCTION CO.
WINDSOR, VERMONT.
Location: Beginning at a point 0.643 miles along Vt. Route 103 and extending northwesterly 5,225.91 feet, including railroad crossing.
CAVENDISH F-025-1(10)
CENTRIMILIER CONST. CO. WINDSOR, VT.
CONSTRUCTION COMPLETED - OCT. 15, 1960
PRELIMINARY PLANS - P.W. FOSTER

GROUND ELEVATION DATUM P.B. LINE
GRADE ELEVATION DATUM P.B. LINE

CURVE DATA

| | |
|-----------------------|--------|
| DEFLECTION | A |
| DEGREE | D |
| RADIUS | R |
| TANGENT | T |
| LENGTH | L |
| EXTERNAL | E |
| POINT OF INTERSECTION | P.I. |
| POINT OF CURVE | P.C. |
| POINT OF TANGENT | P.T. |
| POINT ON TANGENT | P.O.T. |
| POINT ON SUB-TANGENT | POST |

SCALES

| | |
|--------------------|------------|
| TITLE | 1" = 200' |
| TYPICAL | 1" = 2'-8" |
| PLAN | 1" = 50' |
| PROFILE HORIZONTAL | 1" = 50' |
| PROFILE VERTICAL | 1" = 10' |
| CROSS-SECTIONS | 1" = 5'-0" |

THESE PLANS ARE SUBJECT TO SUCH REVISIONS AS MAY BE REQUIRED BY THE BUREAU OF PUBLIC ROADS OR THE COMMISSIONER OF HIGHWAYS.
CONSTRUCTION IS TO BE CARRIED ON IN ACCORDANCE WITH THE PLANS AND THE STANDARD SPECIFICATIONS FOR HIGHWAY AND BRIDGE CONSTRUCTION OF JANUARY 1956 SUBMITTED TO THE BUREAU OF PUBLIC ROADS AS APPROVED JULY 5, 1956, INCLUDING ALL SUBSEQUENT APPROVED REVISIONS AND SUCH REVISED SPECIFICATIONS AND SPECIAL PROVISIONS AS ARE SUBMITTED WITH THE PLANS.

APPROVED *G. S. [Signature]* DISTRICT ENGINEER DATE 2/19/59
APPROVED *J. B. [Signature]* DISTRICT ENGINEER DATE 1-19-59
APPROVED *G. M. [Signature]* HIGHWAY ENGINEER DATE 2/15/59
APPROVED *H. E. [Signature]* DATE 2/19/59

DEPARTMENT OF COMMERCE
BUREAU OF PUBLIC ROADS

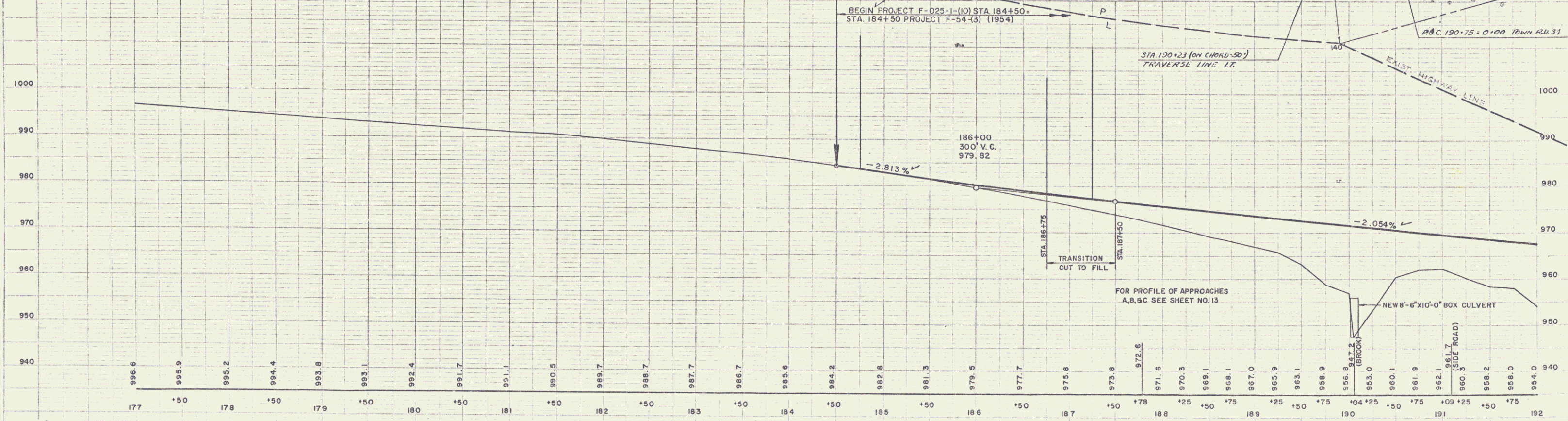
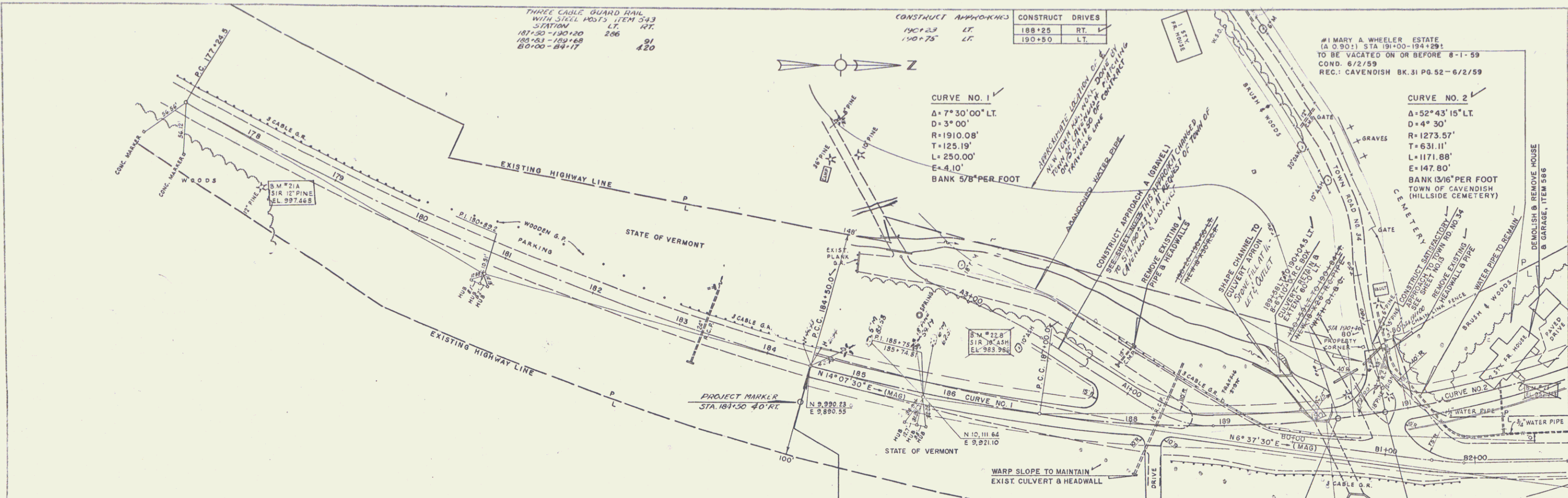
APPROVED _____ DATE _____
DIVISION ENGINEER

PROJECT NO. 025-1(10)
SHEET 1 OF 94 SHEETS

Pin # 00R137
Date 2/16/1954

VT. HIGHWAYS DEPT.
FENTON W. KEENE ASSOC. 5-58

VT. HIGHWAYS DEPT.
FENTON W. KEENE ASSOC. 5-58



B.M. N021-A 40' RT. 178+42 S.I.R. 12" PINE ELEV. 997.468

B.M. N022-B 76' LT. 186+48 S.I.R. 10" ASH ELEV. 983.986

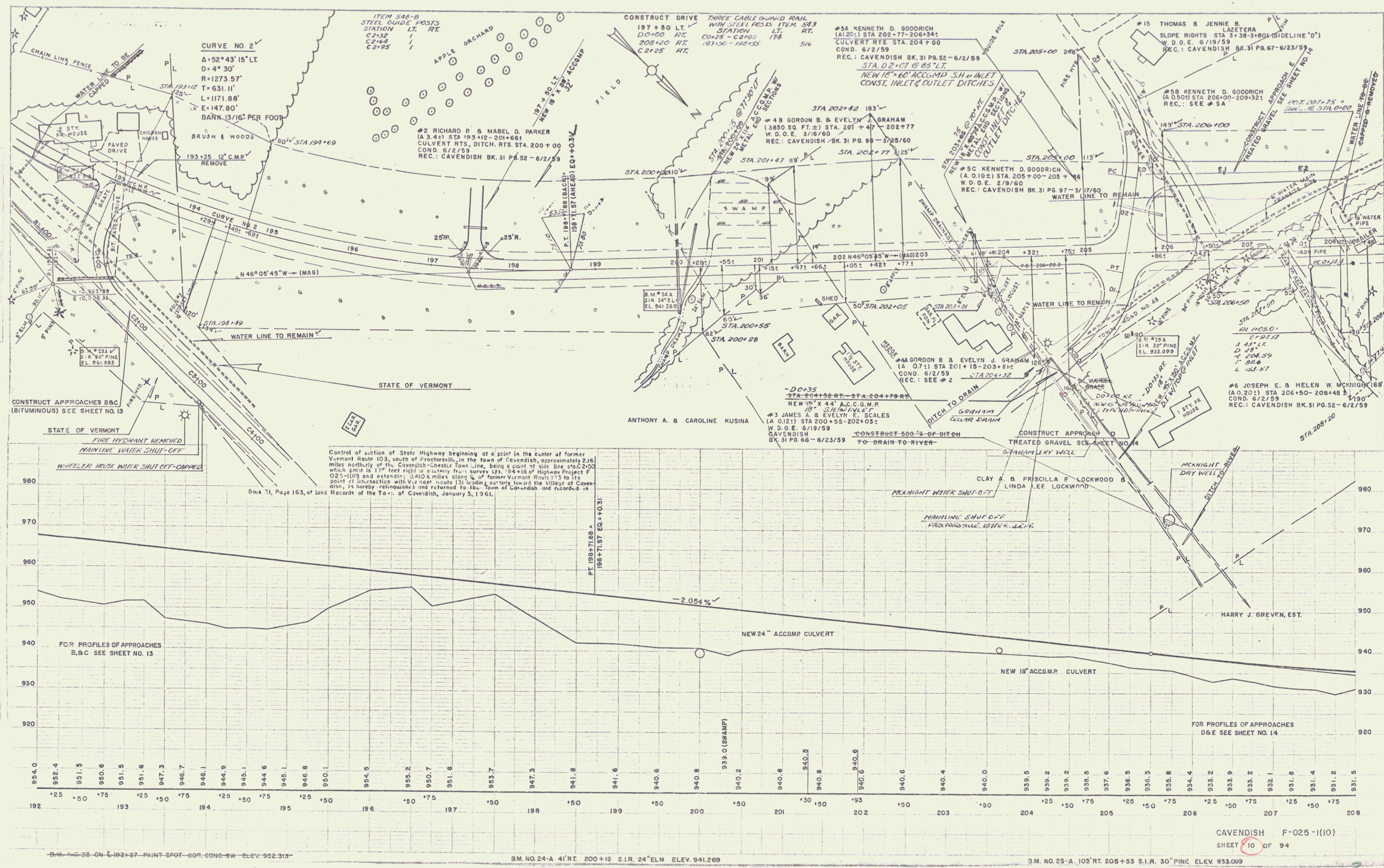
B.M. N023-GN 4-192+27-PAINT-SPOT-COR. CONC. S.W. ELEV. 952.313

CAVENDISH F-025-1(10)
SHEET 9 OF 94

2

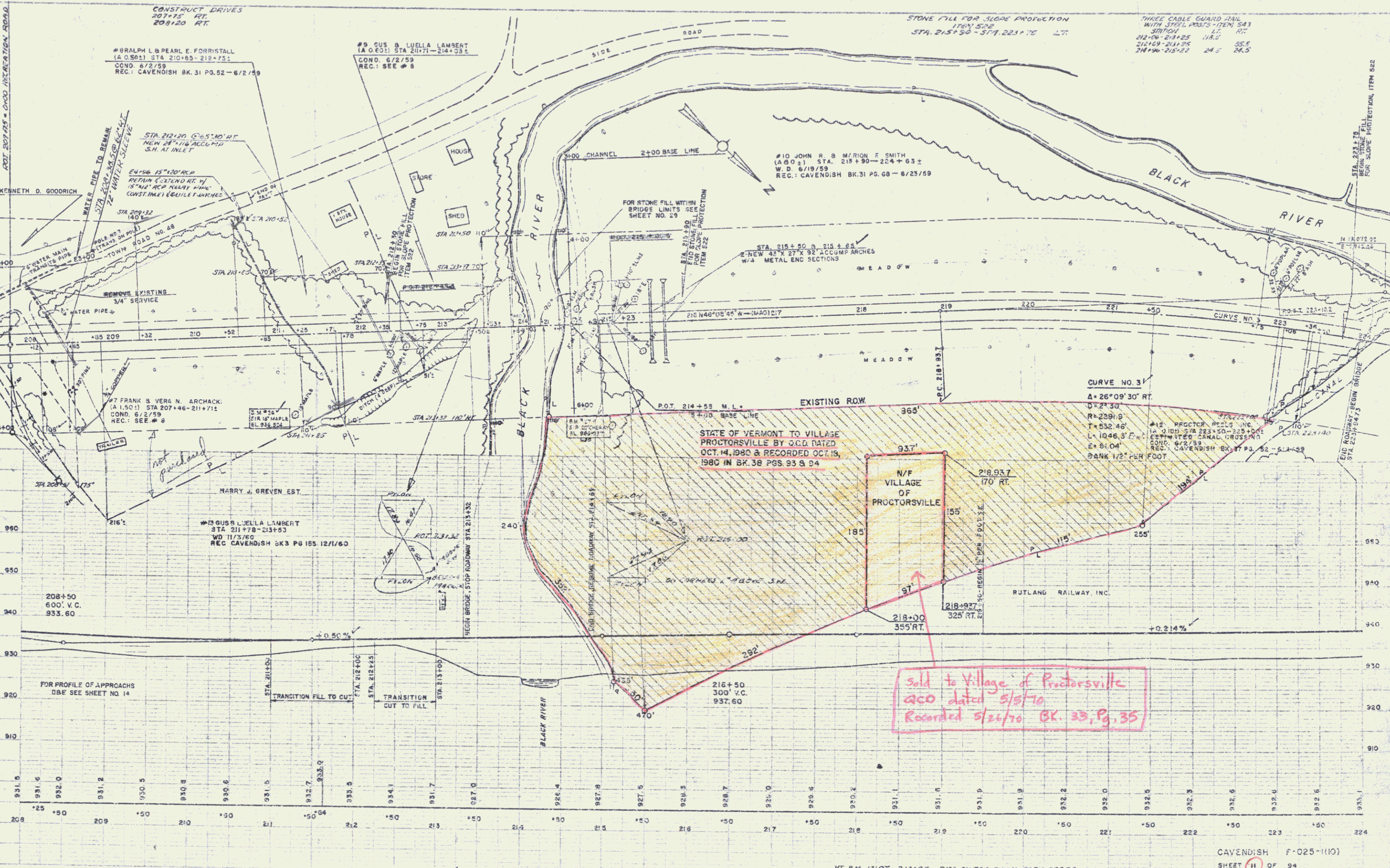
V.T. HIGHWAYS DEPT.
FENTON & NETTES ASSOC.
PLAN
DATE
SCALE

V.T. HIGHWAYS DEPT.
FENTON & NETTES ASSOC.
PLAN
DATE
SCALE



ADJ. 207+75 = CHOD. RELOCATION. ADJ. 201+15 RT. 209+20 RT.

VT. HIGHWAYS DEPT. PAVEN & METE. ASSOC. 5-98 5-99

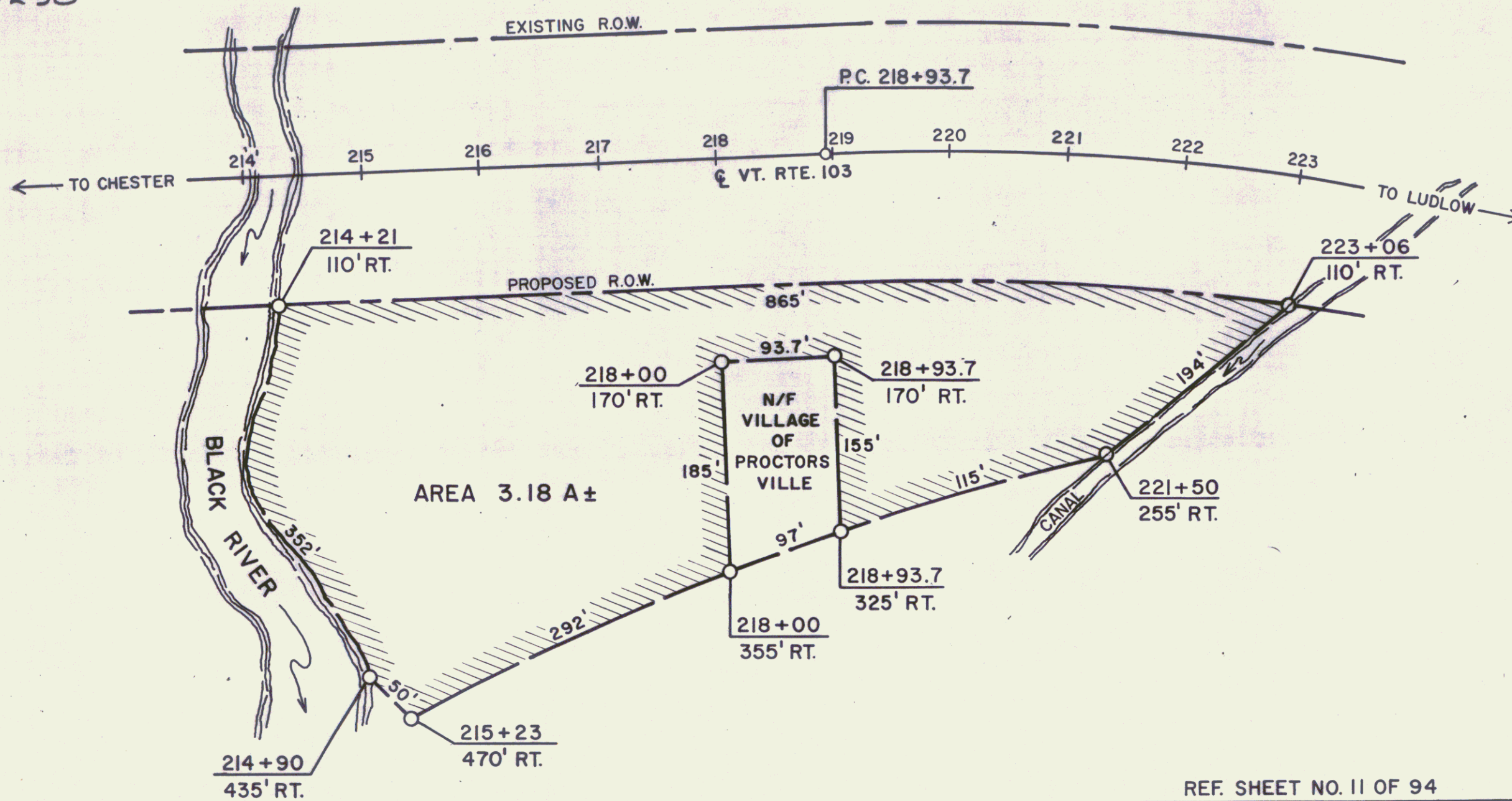


CAVENDISH F-025-1110 SHEET 11 OF 94

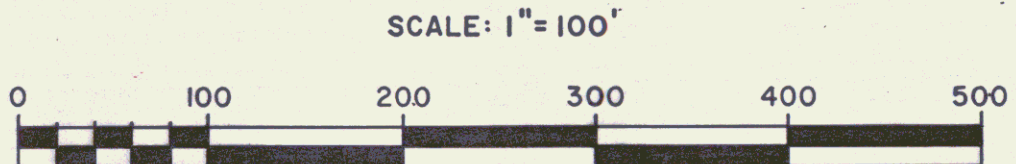
OCT 30 1980

ACQUIRED FROM JOHN AND MARION SMITH BY
 W.D. DATED JUNE 19, 1959 AND RECORDED ON
 JUNE 23, 1959 IN BK. 31 PG. 68 OF THE
 CAVENDISH LAND RECORDS.

ST. OF VT TO VILLAGE OF PROCTORSVILLE
 BY QCD ON 10/14/80 IN BK 38/93-94
 MP 0250



AREA 3.18 A±



REF. SHEET NO. 11 OF 94

STATE OF VERMONT
 AGENCY OF TRANSPORTATION

103
 SHEET 11A

TOWN OF CAVENDISH

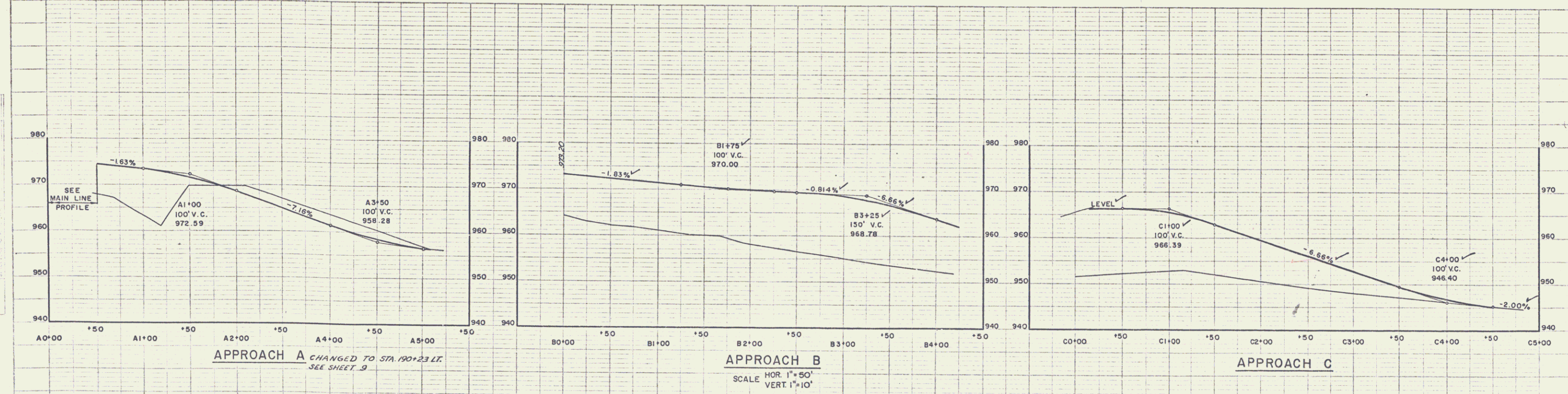
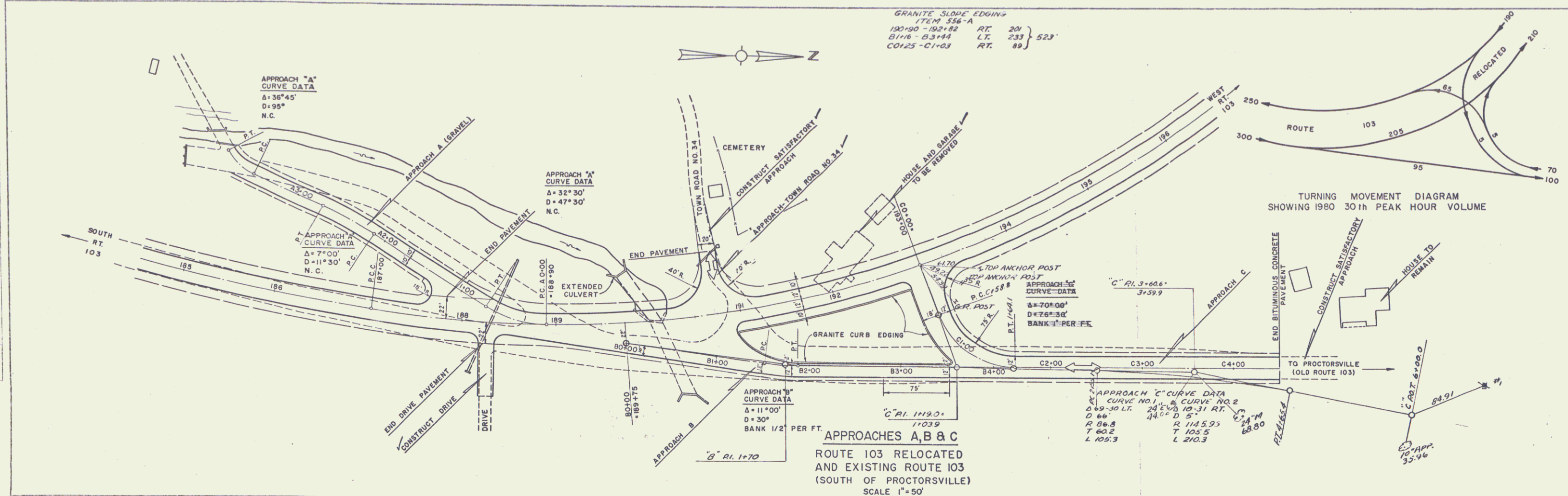
PROJECT F 025-1(10)

APPROX. SCALE 1"=100' DATE 9/11/80

DRAWN BY B.A.M.

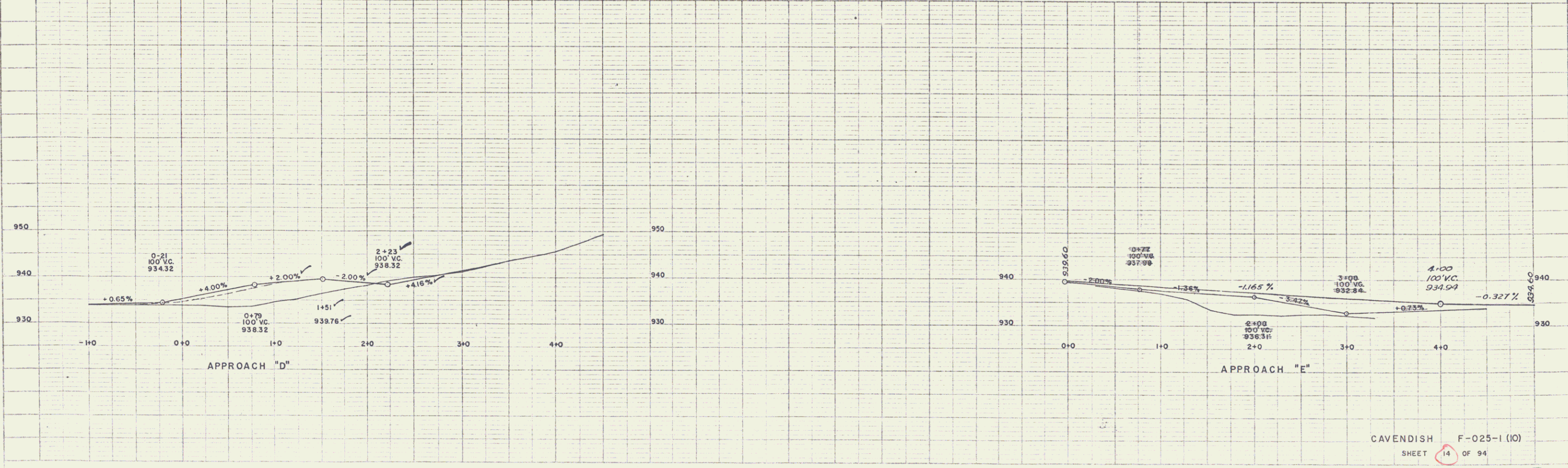
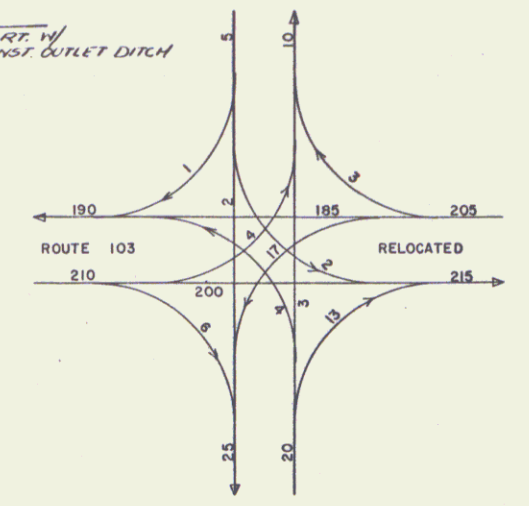
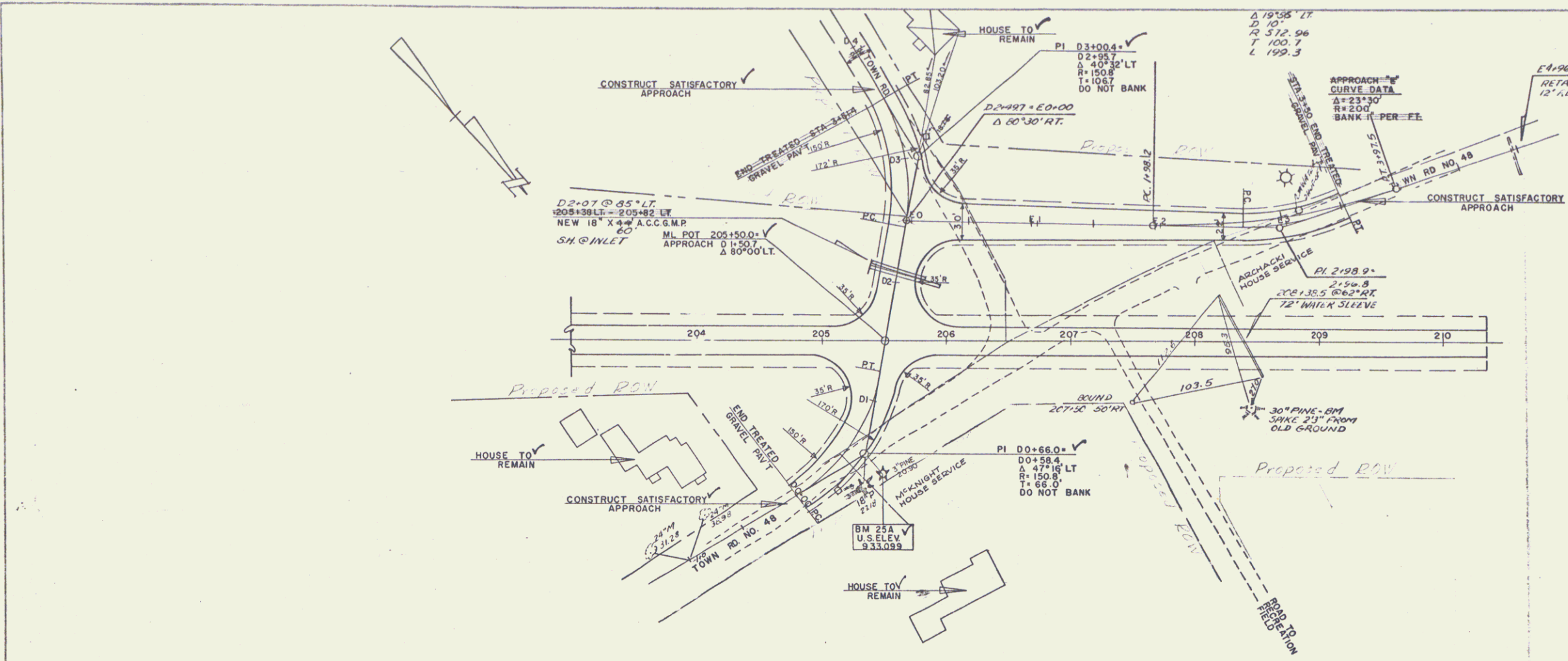
VT HIGHWAYS DEPT.
 FERTON & KETELS ASSOC.
 5-58
 5-58
 PLAN
 103
 103

VT HIGHWAYS DEPT.
 FERTON & KETELS ASSOC.
 5-58
 5-58
 PROFILE
 103
 103

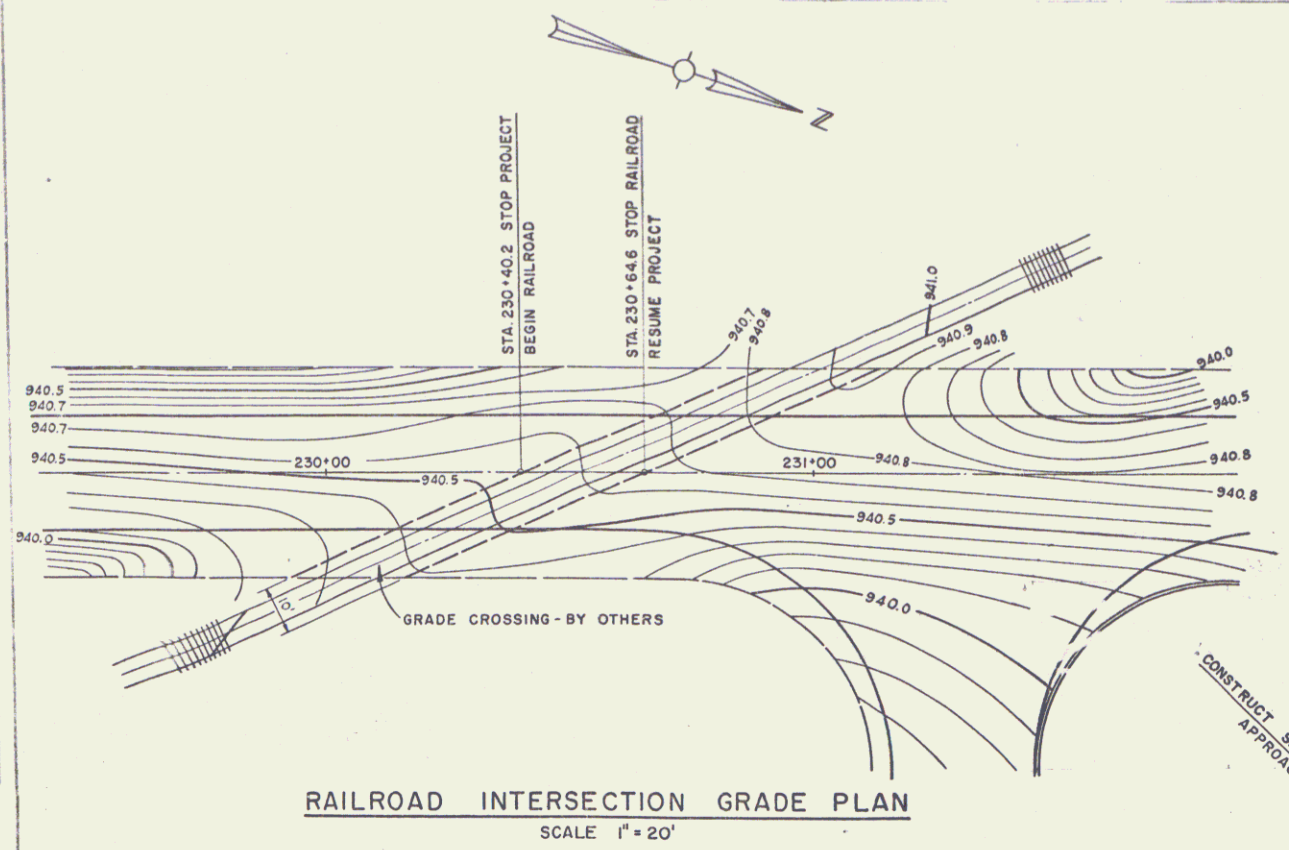


PLAN
 JEWETT
 FAYON L ACES
 1-59
 1-58
 SHEET NO. 14
 TOWN OF
 B.E. BOYD

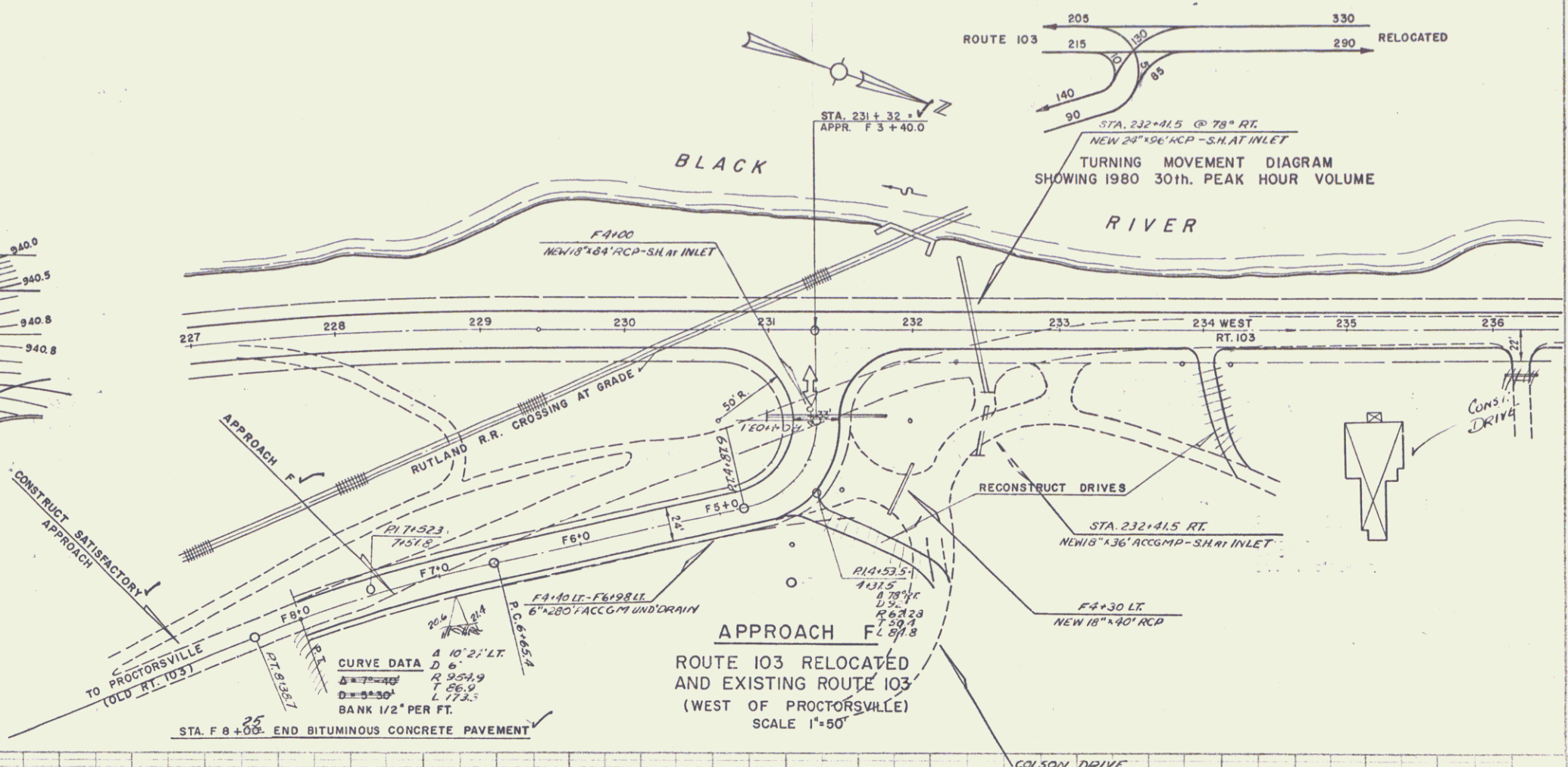
PROFILE
 JEWETT
 BOYD
 1-59
 1-58
 SHEET NO. 14
 TOWN OF
 B.E. BOYD



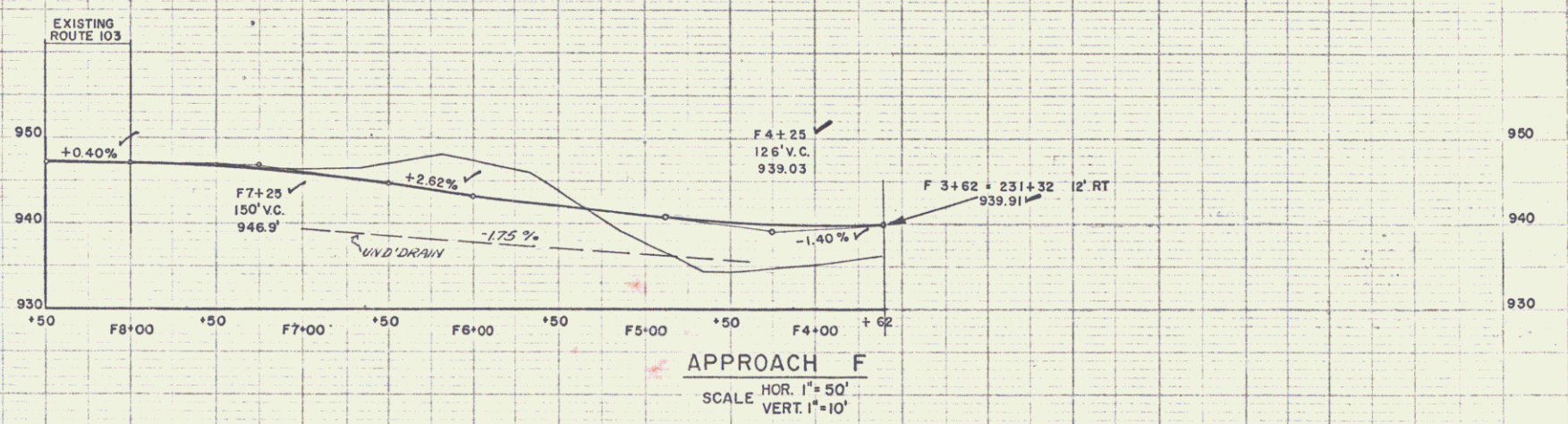
VT HIGHWAYS DEPT.
 PERCY G. KETTER ASSOC.
 5-98



RAILROAD INTERSECTION GRADE PLAN
 SCALE 1" = 20'



ROUTE 103 RELOCATED AND EXISTING ROUTE 103 (WEST OF PROCTORSVILLE)
 SCALE 1" = 50'



APPROACH F
 SCALE HOR. 1" = 50'
 SCALE VERT. 1" = 10'

VT HIGHWAYS DEPT.
 PERCY G. KETTER ASSOC.
 5-98