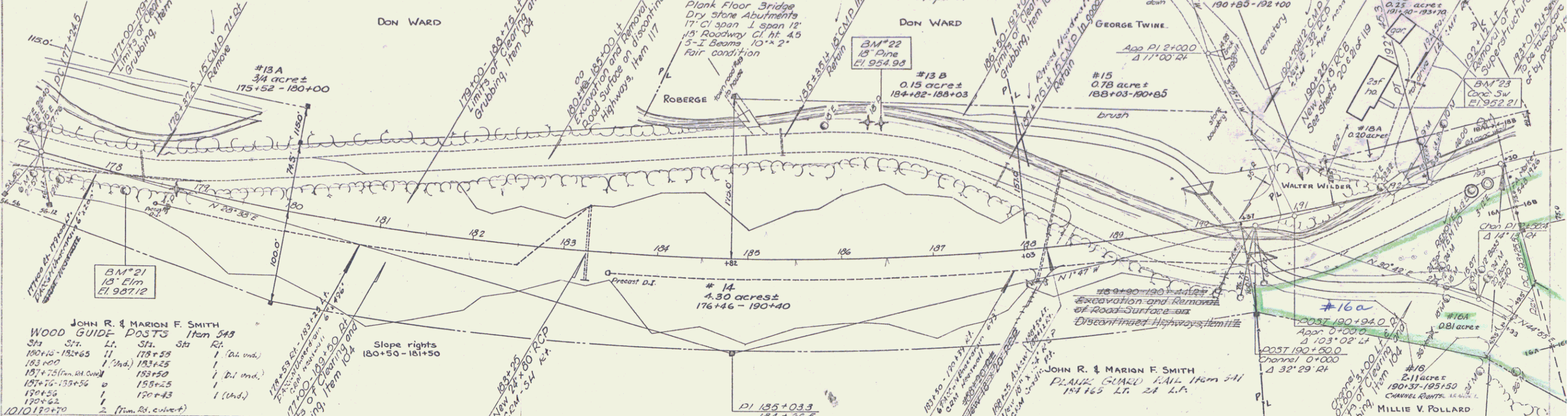


THREE-CABLE GUARD RAIL WITH STEEL POSTS WITH STEEL POSTS
 177+00 - 179+50 Lt. 2x 1/2" A.S. 3/4" dia. 179+72 Lt.
 182+56 - 194+72 Lt. 1 1/2" L.F. 183+46 - 185+40 Lt.
 187+16 - 190+56 Lt. 2x 1/2" L.F. 187+60 - 188+72 Lt.
 189+00 - 191+44 Lt. 3/4" dia. 189+40 - 191+00 Lt.

CONSTRUCT DRIVES WOOD GUIDE POSTS CHANNEL EXCAVATION
 181+50 Lt. (Tr. av.) 188+75 Lt. 78-96
 177+00 - 179+50 Lt.
 186+75 - 189+95 Lt.
 0+19 3+50 Rt.

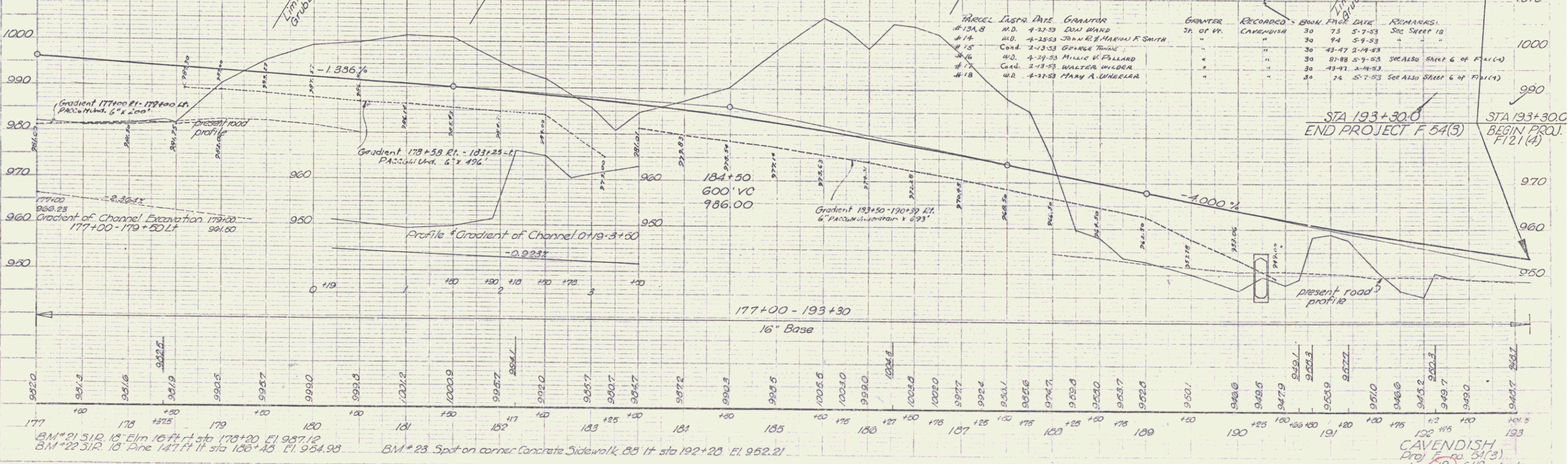
SEEDING ITEM 611 & TOPSOIL ITEM 621
 181+20 - 193+90 Lt.

CONSTRUCT APPROACHES
 town road #34 189+00 Lt.
 to cemetery 191+00 Lt.
 189+75 Lt.



JOHN R. & MARION F. SMITH
 WOOD GUIDE POSTS Item 543
 Sta. Lt. Sta. Rt.
 180+16 - 182+65 1 1/2" 181+58 1 (d. end.)
 183+00 1 1/2" 183+25 1 (d. end.)
 187+16 (in. in. cond.) 187+50 1 (d. end.)
 187+76 - 188+56 1 188+25 1 (d. end.)
 189+56 1 189+43 1 (d. end.)
 190+52 1 190+43 1 (d. end.)
 191+20 2 (Tr. Rd. culvert)

TRACT	DATE	GRANTOR	GRANTEE	RECORDED	BOOK	PAGE	DATE	REMARKS
#13A, B	M.D.	4-27-53	DON WARD	3A	73	5-7-53		See Sheet 10
#14	M.D.	4-28-53	JOHN R. & MARION F. SMITH	"	74	5-7-53		
#15	M.D.	2-13-53	GEORGE TWINE	"	43-47	2-19-53		See Also Sheet 6 of Plan (4)
#16	M.D.	4-29-53	MILLIE V. POLLARD	"	81-88	5-7-53		See Also Sheet 6 of Plan (4)
#17	M.D.	2-13-53	WALTER WILDER	"	47-51	4-9-53		
#18	M.D.	4-27-53	MARY A. WHEELER	"	74	5-7-53		See Also Sheet 6 of Plan (4)



BM #21 31/2" Elm 16 ft. sta 178+20 El. 957.12
 BM #22 31/2" Elm 14 1/2 ft. sta 186+43 El. 954.98
 BM #23 Spot on corner Concrete Sidewalk 85 ft sta 192+28 El. 952.21

CAVENDISH
 Proj. No. 54(3)
 Sheet 19 of 119 sheets