

WOOD GUIDE POSTS Item 543

| Sta. to Sta. | LI.   | RI.            |
|--------------|-------|----------------|
| 87+50        | 1     | 1              |
| 89+50        | 20+25 | A              |
| 92+00        | 27+00 | 20             |
| 94+19        |       | 1 (Underdrain) |
| 96+76.5      |       |                |

MUCK EXCAVATION  
85+00 - 90+00 Rt  
87+50 - 91+00 Lt

CONSTRUCT DRIVES  
85+00 Lt  
90+66 Rt

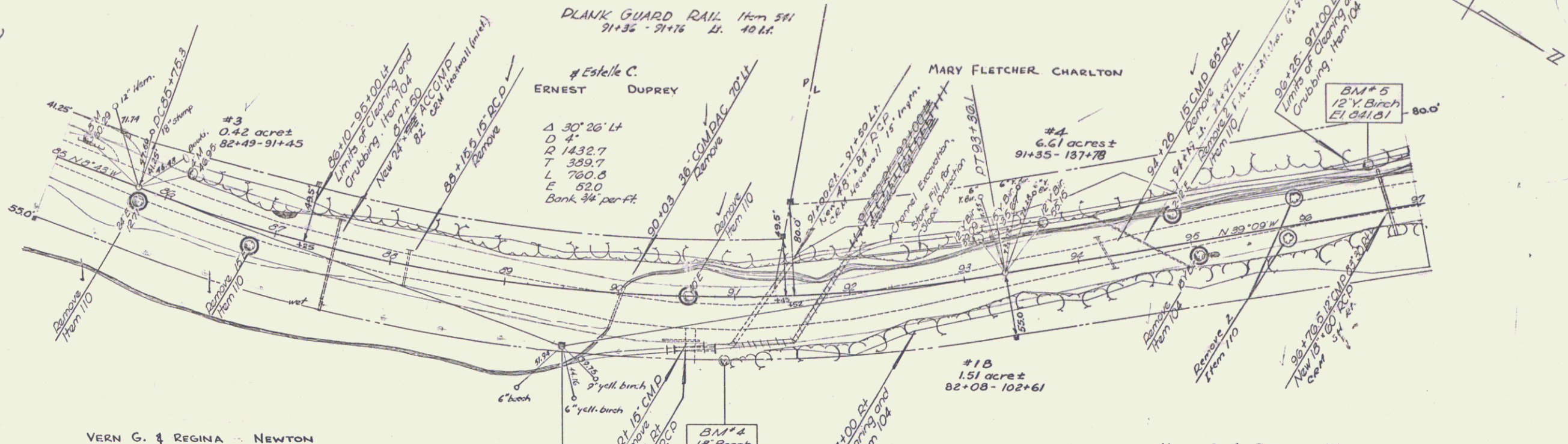
THREE CABLE GUARD RAIL WITH STEEL POSTS  
89+70 - 91+74 Rt. 96 Lt.  
90+78 - 91+74 Rt. 96 Lt.  
91+92 97+00 Lt

CHANNEL EXCAVATION  
89+65 90+49 Rt  
90+53 91+53 Rt  
91+92 97+00 Lt

STONE FILL FOR SLOPE PROTECTION  
92+05 - 97+00 Lt

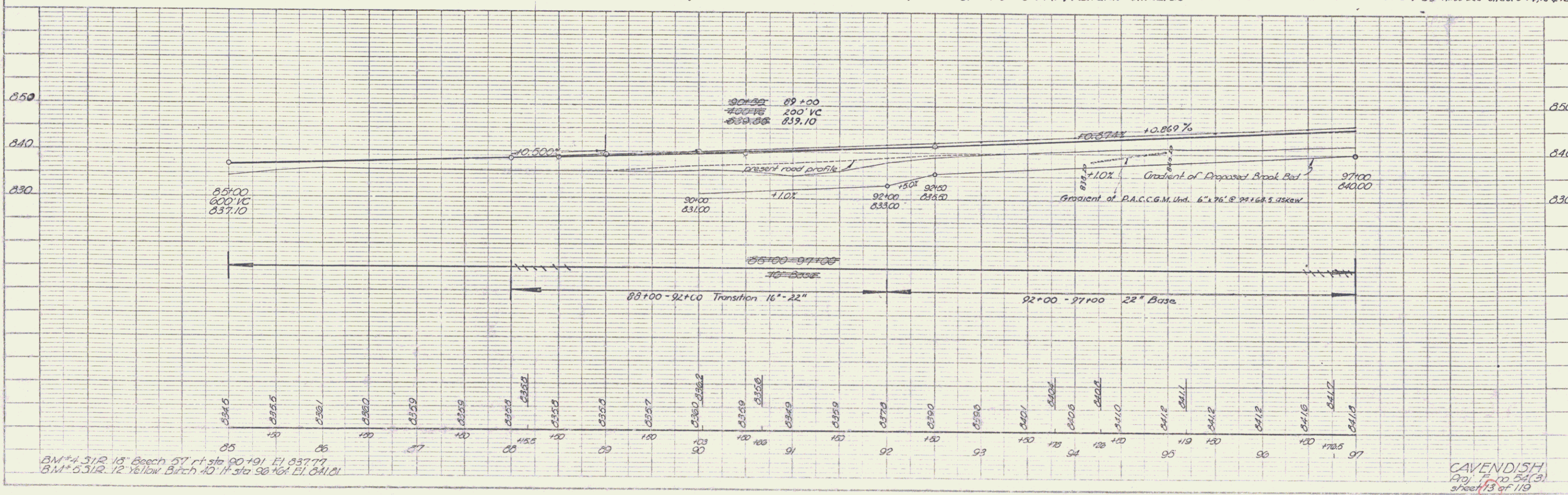
#1000 GUIDE POSTS  
89+55 - 90+00 Rt  
92+00 - 97+00 Lt

PLANK GUARD RAIL Item 541  
91+35 - 91+76 Lt. 40 Lt.



of Estelle C. ERNEST DUPREY  
 $\Delta$  30' 26" Lt  
 $\theta$  4"  
 $R$  1432.7  
 $T$  359.7  
 $L$  780.8  
 $E$  52.0  
 Bank  $\frac{3}{4}$ " per ft

| PARCEL | INSTR. | DATE    | GRANTOR                    | GRANTEE              | RECORDED | BOOK | PAGE   | DATE                        | REMARKS |
|--------|--------|---------|----------------------------|----------------------|----------|------|--------|-----------------------------|---------|
| #3     | M.D.   | 4-24-53 | ERNEST & ESTELLE C. DUPREY | So. of Vt. CAVENDISH | 30       | 99   | 5-7-53 | Also see Sheet 12.          |         |
| #4     | M.D.   | 4-30-53 | MARY FLETCHER CHARLTON     |                      | 30       | 70   | 5-7-53 | Also see Sheets 14, 15 & 16 |         |



BM #4 512 13' Beech 57' rt sta 90+191 El 837.77  
 BM #5 512 12' Yellow Birch 10' lt sta 90+161 El 841.01

CAVENDISH  
 Proj. No. 54(3)  
 Sheet 13 of 19