

FED. ROAD DIST. NO.	STATE	FED. AID PROJ. NO.	FISCAL YEAR	SHEET NO.	TOTAL SHEETS
9	VT	34 B	1925	14	39

GUARD RAIL REQUIRED ON LEFT

Sta. 178+18 to Sta. 180+98 - 280 Ft.

Curve No. 42
 $d = 6^{\circ}24'$
 $D = 151.00'$
 $R = 382.0'$
 $T = 66.9'$
 $L = 122.7'$
 $E = 5.0'$
 when outside

Sta. 182+50 " 183+22 - 72 "
 " 183+75 " 187+27 - 352 "
 " 188+63 " 188+87 - 24 "
 " 189+01 " 189+85 - 24 "

ON RIGHT

Sta. 179+68 to Sta. 179+92 - 24 Ft.

" 185+97 " 186+21 - 24 "
 " 188+63 " 188+87 - 24 "
 " 189+61 " 189+85 - 24 "

Total This Sheet - 848 Ft.

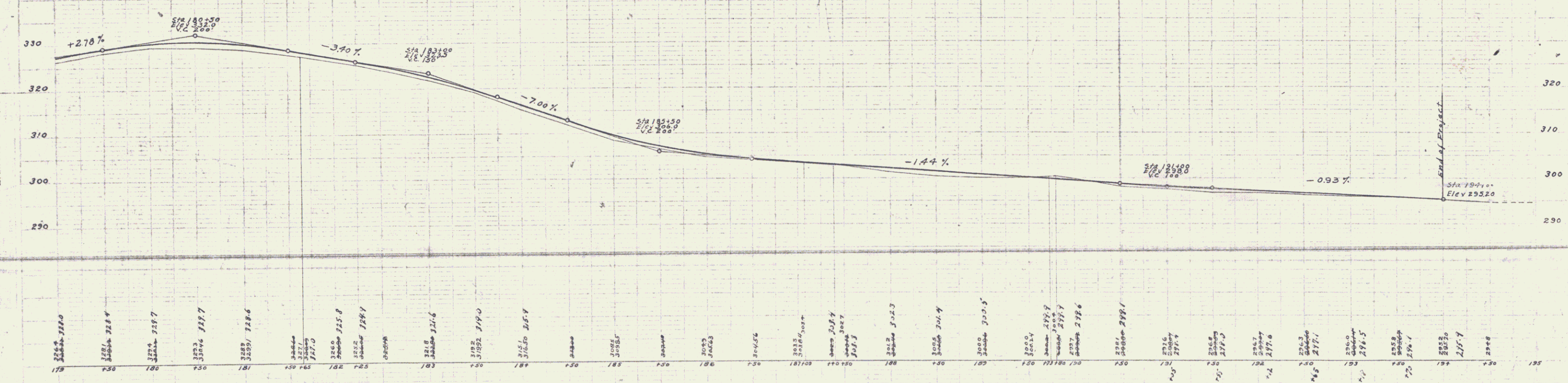
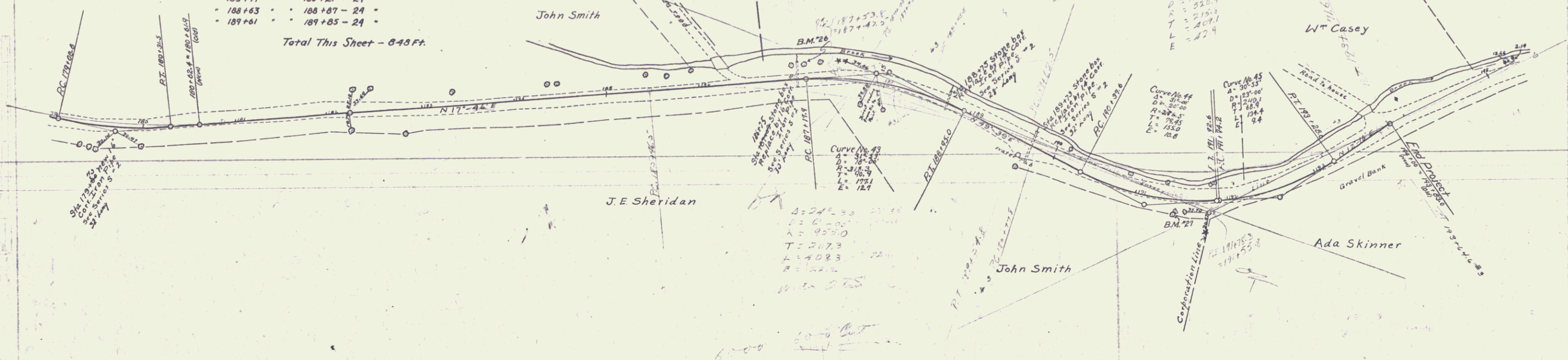
NEW CULVERTS REQUIRED

Sta. 179+80 - 16" Corr. Iron Pipe Culvert - 32 Ft. Long
 1-2 1/2-5 Concrete - 1.7 Cu. yds.

Sta. 187+09 - 16" Corr. Iron Pipe Culvert - 30 Ft. Long 30"
 1-2 1/2-5 Concrete - 1.7 Cu. yds.

Sta. 188+75 - 14" Corr. Iron Pipe Culvert - 28 Ft. Long
 1-2 1/2-5 Concrete - 1.7 Cu. yds.

Sta. 189+73 - 14" Corr. Iron Pipe Culvert - 28 Ft. Long
 1-2 1/2-5 Concrete - 1.7 Cu. yds.



Series F No 54B
 Sheet 14 of 39