

**GUARD RAIL REQUIRED**

- ON LEFT**
- Sta. 148+95 to Sta. 149+19 - 24 Ft.
  - " 148+96 " " 149+20 - 24 "
  - " 150+04 " " 151+24 - 120 "
  - " 152+97 " " 153+21 - 24 "
  - " 156+10 " " 162+02 - 592 "
- ON RIGHT**
- Sta. 147+10 to Sta. 149+50 - 210 Ft.
  - " 148+42 " " 149+14 - 152 "
  - " 152+97 " " 153+21 - 24 "
  - " 156+10 " " 156+34 - 24 "
  - " 156+08 " " 157+12 - 24 "
  - " 157+88 " " 158+12 - 24 "
  - " 160+38 " " 160+62 - 24 "
- Total This Sheet - 1266 Ft

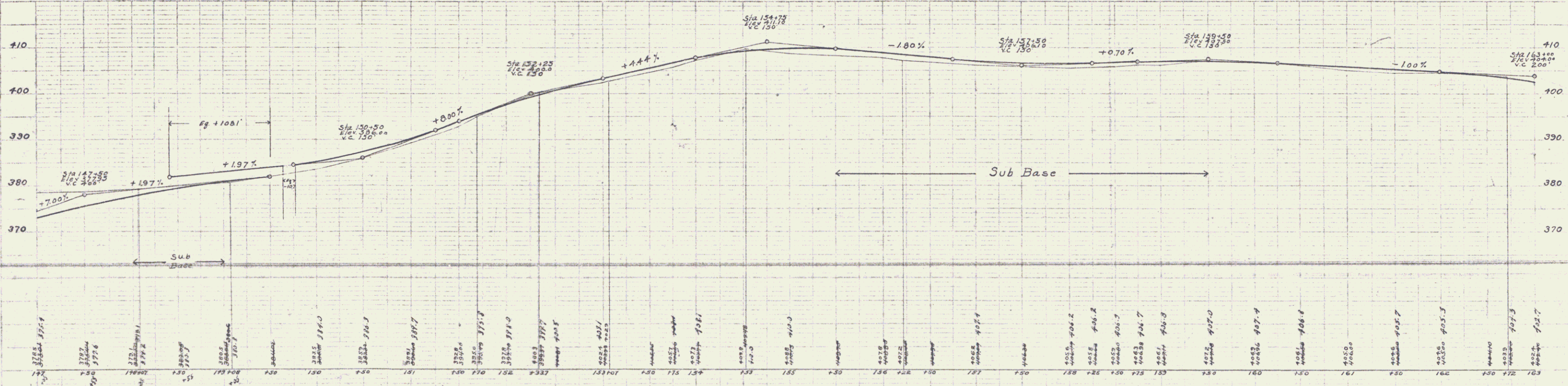
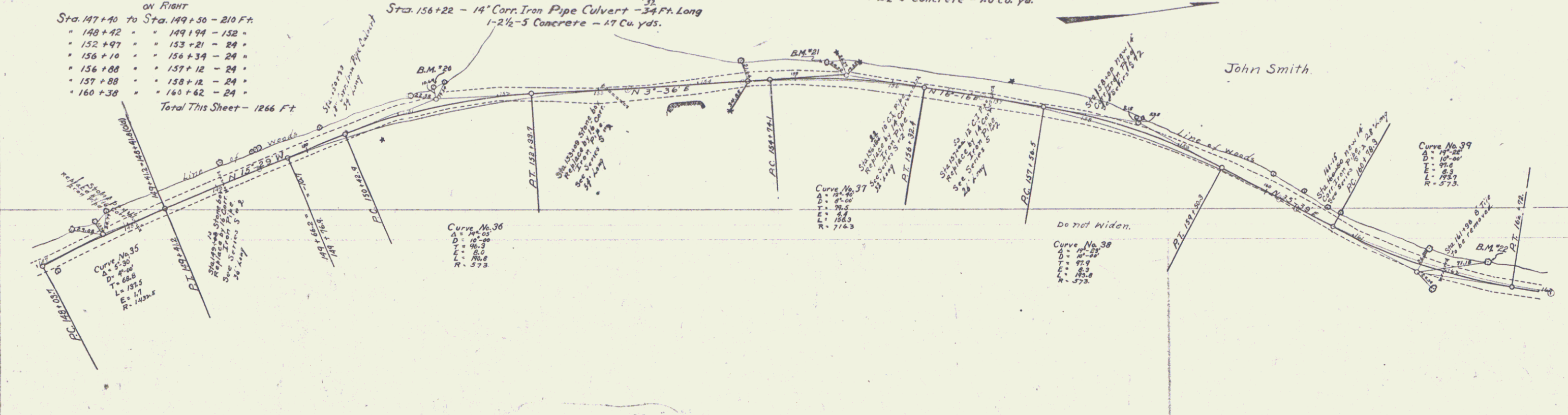
**NEW CULVERTS REQUIRED**

- Sta. 149+09 - 16" Corr. Iron Pipe Culvert - 36 Ft. Long  
1-2 1/2-5 Concrete - 17 Cu. yds.
- Sta. 149+08 - 16" Corr. Iron Pipe Culvert - 34 Ft. Long  
1-2 1/2-5 Concrete - 17 Cu. yds.
- Sta. 153+09 - 16" Corr. Iron Pipe Culvert - 38 Ft. Long  
1-2 1/2-5 Concrete - 17 Cu. yds.
- Sta. 156+22 - 14" Corr. Iron Pipe Culvert - 34 Ft. Long  
1-2 1/2-5 Concrete - 17 Cu. yds.
- Sta. 157+50 - 14" Corr. Iron Pipe Culvert - 38 Ft. Long  
1-2 1/2-5 Concrete - 17 Cu. yds.
- Sta. 158+00 - 14" Corr. Iron Pipe Culvert - 34 Ft. Long  
1-2 1/2-5 Concrete - 17 Cu. yds.
- Sta. 160+50 - 14" Corr. Iron Pipe Culvert - 30 Ft. Long  
1-2 1/2-5 Concrete - 10 Cu. yds.

**SUB-BASE REQUIRED**

- Sta. 148+30 to Sta. 149+00 - Length 400 Ft.
- Sta. 155+50 to Sta. 164+50 - Length 400 Ft.

FED. ROAD DIST. NO.	FISCAL YEAR	SHEET NO.	TOTAL SHEETS
17	1923	12	30



Series No. 54B  
Sheet 12 of 30