

INDEX OF SHEETS

SHEET NO.	TITLE PAGE
2	TYPICAL CROSS-SECTION OF IMPROVEMENT
3-14	PLAN AND PROFILE
15-17	BRIDGES
18-39	CROSS SECTIONS

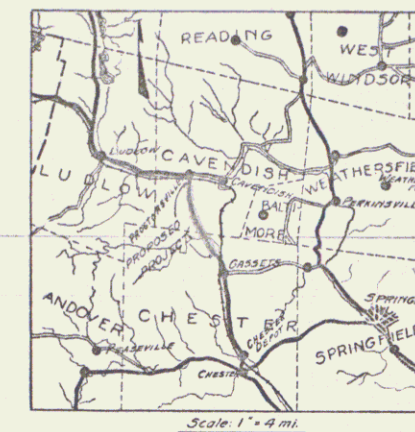
FED. ROAD DIST. NO.	STATE	PERIOD	FINAL YEAR	SHEET NO.	TOTAL SHEETS
9	Vt.	54B	1925	1	39

STATE OF VERMONT
STATE HIGHWAY DEPARTMENT

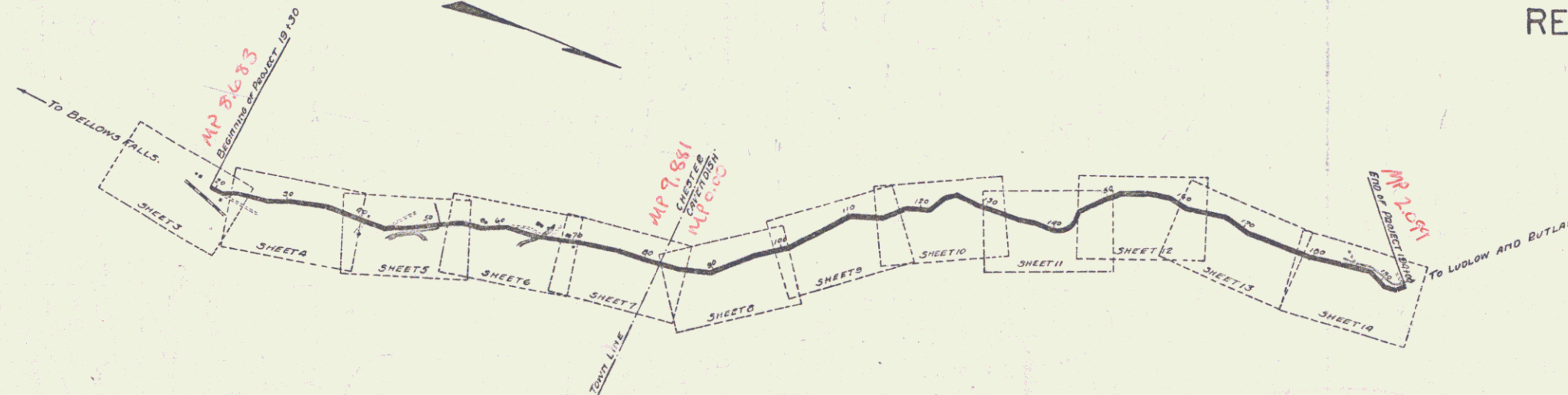
PLAN AND PROFILE OF PROPOSED
STATE HIGHWAY
FEDERAL AID PROJECT

TOWNS OF CHESTER-CAVENDISH

PROCTORSVILLE GULF ROAD
BEGINNING AT END OF F.A.P. 54 A
THENCE NORTHERLY 3.31 MI.



PLAN: 1 IN. = 50 FT.
SCALES: PROFILE: HORIZ. 1 IN. = 50 FT.
VERT. 1 IN. = 10 FT.
CROSS SECTIONS: 1 IN. = 5 FT.



RECORD PLANS

RIGHT-OF-WAY DIVISION
TOWN FILE

PERPETUAL
Rte of VT 103
(To be Returned to R.O.W. Division)

APPROVED: *H.E. Sargent*
CHIEF ENGINEER

SUBMITTED BY ORDER OF THE STATE HIGHWAY BOARD

S. B. Burt
COMMISSIONER OF HIGHWAYS

CONVENTIONAL SIGNS

- COUNTY LINE
- TOWN LINE
- FENCE LINE
- STONE WALL
- UNFENCED PROPERTY
- GUARD RAIL
- TRAVELED WAY
- RAILROAD
- RETAINING WALL
- CENTER LINE
- SURVEY LINE
- CULVERT
- DRAIN INLET
- TROLLEY POLE
- POWER POLE
- TELEPHONE POLE
- TREES
- HEDGE

GROUND ELEVATION	DATE	TIME
GRADE ELEVATION	DATE	TIME
CHESTER-CAVENDISH 54-B	RECORD PLANS	ACCOUNT
CONTR. FORCE	1925	
FISCAL YEAR		
CURVE DATA	DEFLECTION ANGLE	Δ
	DEGREE OF CURVE	D.
	RADIUS OF CURVE	R.
	TANGENT DISTANCE	T.
	LENGTH OF CURVE	L.
	EXTERNAL DISTANCE	E.
	POINT OF INTERSECTION	P. I.
	POINT OF CURVE	P. C.
	POINT OF TANGENT	P. T.

LAYOUT
1 IN. = 1000 FT.

RECOMMENDED FOR APPROVAL

Pin# ODR 134
Route VT 103
Date 1/1/1925

RECOMMENDED FOR APPROVAL
DISTRICT ENGINEER
BUREAU OF PUBLIC ROADS
CHIEF ENGINEER
BUREAU OF PUBLIC ROADS
APPROVED
DIRECTOR - BUREAU OF PUBLIC ROADS

SERIES F No 54B FILED
SHEET 1 of 39

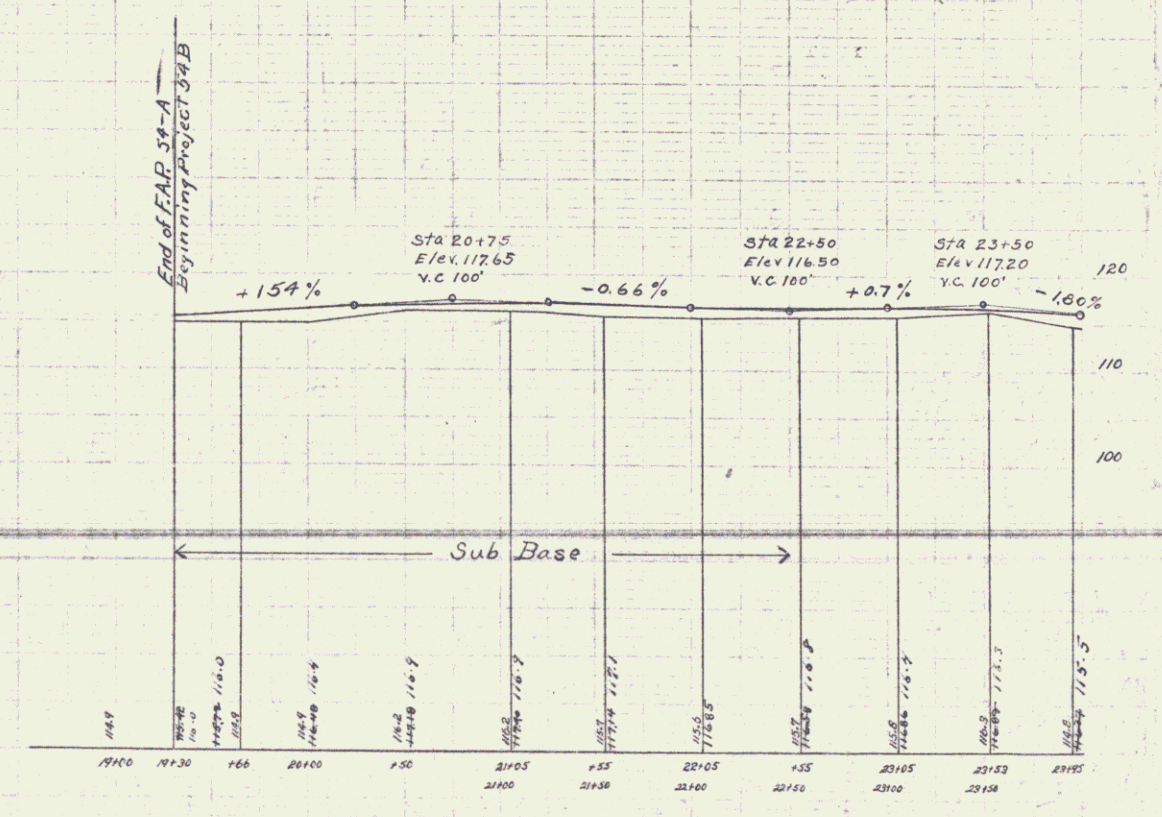
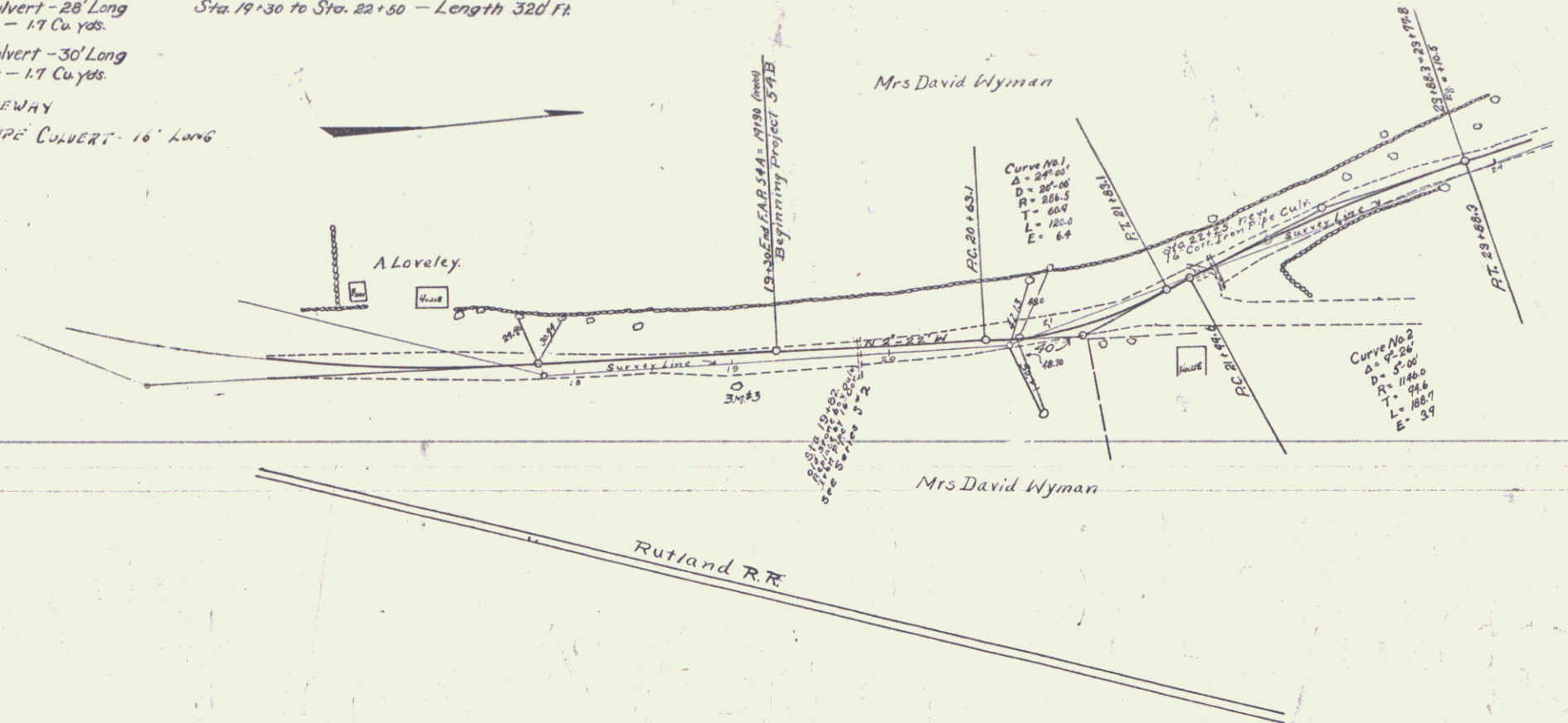
DIST. # 3 PLANS

GUARD RAIL REQUIRED
 ON LEFT
 Sta. 19+70 to Sta. 19+94 Length 24 Ft.
 " 22+12 " " 22+36 " 24 "
 ON RIGHT
 Sta. 19+70 to Sta. 19+94 Length 24 Ft.
 " 22+12 " " 22+36 " 24 "
 Total This Sheet 96 Ft.

NEW CULVERTS REQUIRED
 Sta. 19+82 - 16" Corr. Iron Pipe Culvert - 28' Long
 1-2 1/2 - 3 Concrete - 1.7 Cu. yds.
 Sta. 22+25 - 16" Corr. Iron Pipe Culvert - 30' Long
 1-2 1/2 - 3 Concrete - 1.7 Cu. yds.
 Sta. 21+00 Lt. WYMAN DRIVEWAY
 14" CORR. IRON PIPE CULVERT - 16' LONG

SUB BASE REQUIRED
 Sta. 19+30 to Sta. 22+50 - Length 320 Ft.

FED. ROAD DIST. NO.	STATE	FED. AID PROJ. NO.	FISCAL YEAR	SHEET NO.	TOTAL SHEETS
9	VT	372	1955	3	39



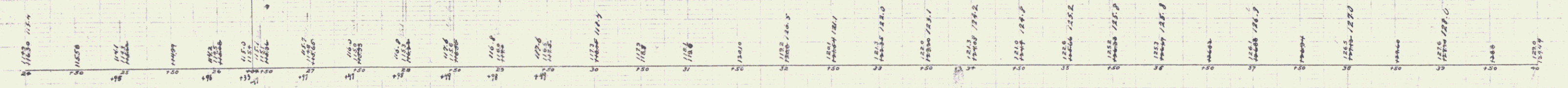
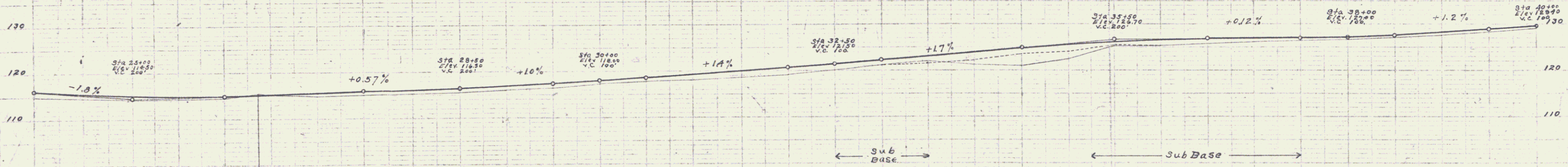
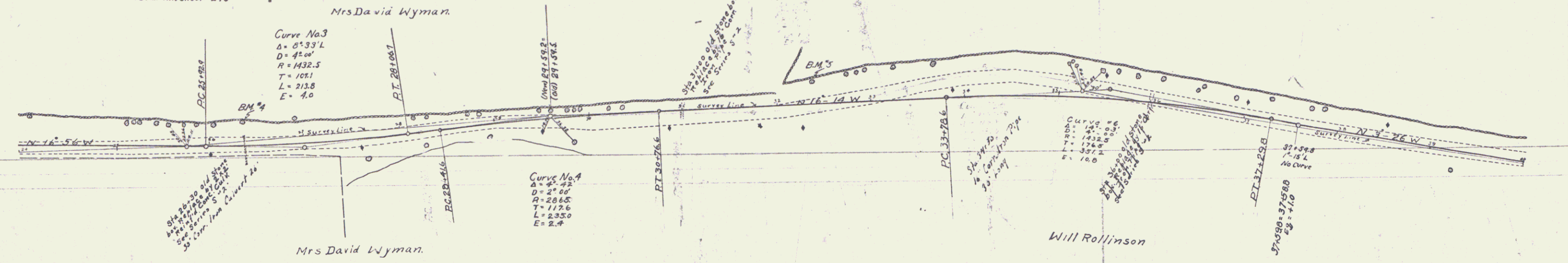
Series No 54B
 Sheet 3 of 39

FED. ROAD DIST. NO.	STATE	FED. AID PROJ. YEAR	FISCAL YEAR	SHEET NO.	TOTAL SHEETS
0	VT	5-4-B	1923	4	39

GUARD RAIL REQUIRED
 on Left
 Sta. 26+18 to Sta. 26+42 - 24 Ft.
 " 30+88 to " 31+12 - 24 "
 " 35+88 to " 36+12 - 24 "
 on Right
 Sta. 26+18 to Sta. 26+42 - 24 Ft.
 " 28+30 to " 29+34 - 104 "
 " 30+88 to " 31+12 - 24 "
 " 35+88 to " 36+12 - 24 "
 Total This Sheet 248.

NEW CULVERTS REQUIRED
 Sta. 26+30 - 24" Rein. Conc. Culvert - 26 Ft. Long
 1-2-1/2 Concrete - 3 Cu. yds.
 1-2-1/2 " " - 55 "
 Rein. Steel - 17 "
 Sta. 31+00 - 16" Corr. Iron Pipe Culvert - 26 Ft. Long
 1-2-1/2 Concrete - 17 Cu. yds.
 Sta. 36+00 - 16" Corr. Iron Pipe Culvert - 47 Ft. Long
 1-2-1/2 Concrete - 17 Cu. yds.

SUB-BASE REQUIRED
 Sta. 32+50 to Sta. 33+00 - Length 100 Ft.
 Sta. 35+25 to " 37+50 - " 225 "



Series F No 54B
 Sheet 4 of 30

FED. ROAD DIST. NO.	STATE	FED. AID FISCAL YEAR	SHEET NO.
5	VI	1-4-81	33

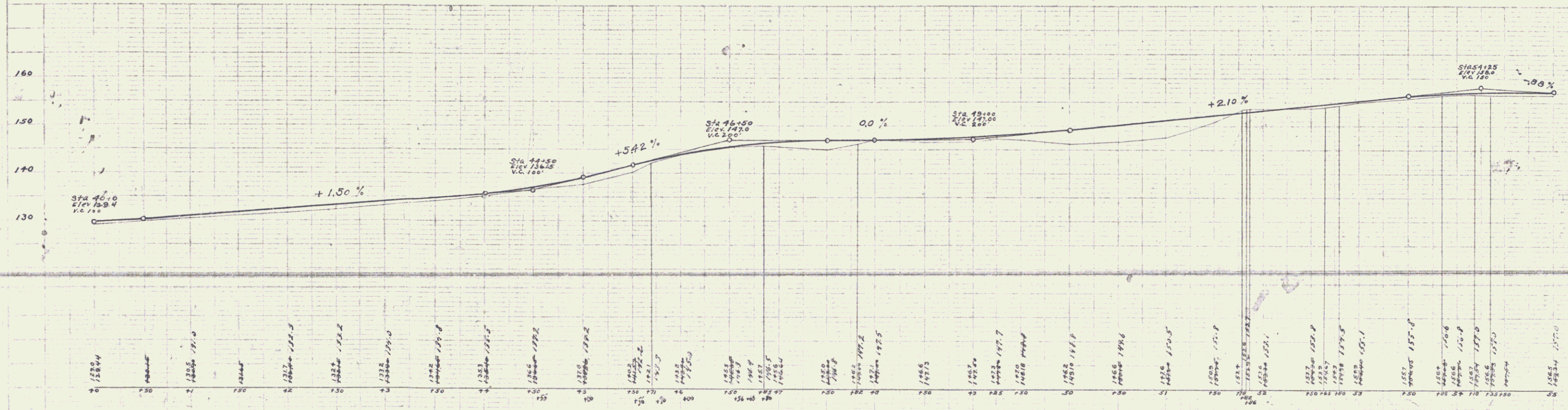
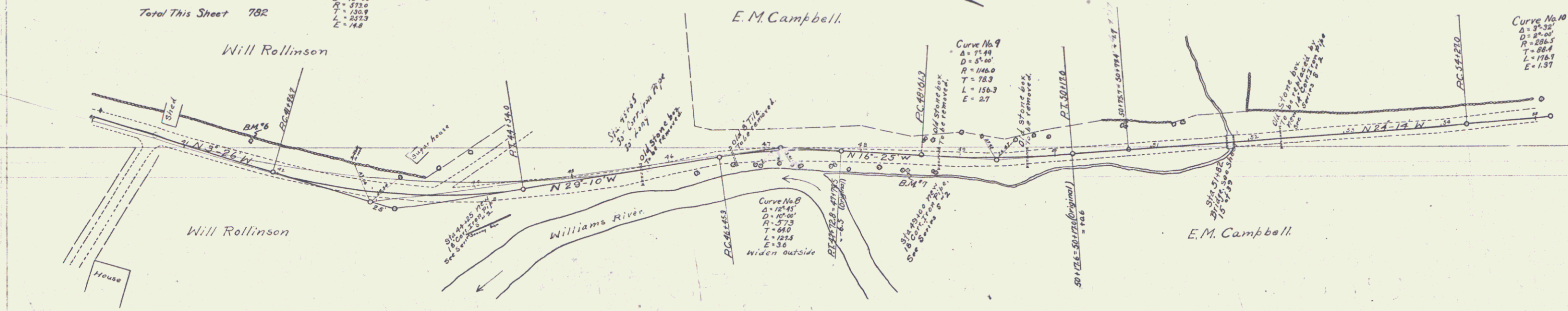
GUARD RAIL REQUIRED
 ON LEFT
 Sta. 44+12 to Sta. 44+30 - 24 Ft.
 " 48+88 " " 49+12 - 24 " "
 " 51+68 " " 51+92 - 24 " "
 " 52+22 " " 52+46 - 24 " "
 ON RIGHT
 Sta. 44+12 to Sta. 49+30 - 24 Ft.
 " 45+56 " " 49+16 - 360 " "
 " 51+68 " " 51+92 - 24 " "
 " 52+22 " " 55+00 - 278 " "
 Total This Sheet 782

- NEW CULVERTS REQUIRED
 Sta. 44+25 - 18" Corr. Iron Pipe Culvert - 28 Ft. Long
 1-2 1/2 - 5 Concrete - 2 Cu. yds.
 Sta. 49+00 - 18" Corr. Iron Pipe Culvert - 32 Ft. Long
 1-2 1/2 - 5 Concrete - 1.5 Cu. yds.
 Sta. 52+34 - 14" Corr. Iron Pipe Culvert - 28 Ft. Long
 1-2 1/2 - 5 Concrete - 1.6 Cu. yds.
 Sta. 45+65 - 30" Corr. Iron Pipe - 30' Long

Curve No. 7
 Δ = 25.5°
 D = 101.00'
 R = 538.0'
 T = 130.9'
 L = 212.3'
 E = 14.8'

Curve No. 9
 Δ = 17.4°
 D = 57.00'
 R = 146.0'
 T = 78.3'
 L = 156.3'
 E = 2.7'

Curve No. 10
 Δ = 35.32°
 D = 87.00'
 R = 288.5'
 T = 88.4'
 L = 198.1'
 E = 1.37'



DATE	BY	NO.	YEAR	SHEET NO.	TOTAL SHEETS
9	VT	3-2	1925	6	39

GUARD RAIL REQUIRED

ON LEFT
 Sta. 56+10 to Sta. 56+34 - 24 Ft.
 " 58+16 " " 58+40 - 24 "
 " 63+32 " " 65+40 - 208 "
 " 66+02 " " 66+50 - 48 "

ON RIGHT
 Sta. 55+00 to Sta. 56+36 - 136 Ft.
 " 58+16 " " 58+40 - 24 "
 " 64+92 " " 65+40 - 48 "
 " 66+02 " " 66+26 - 24 "

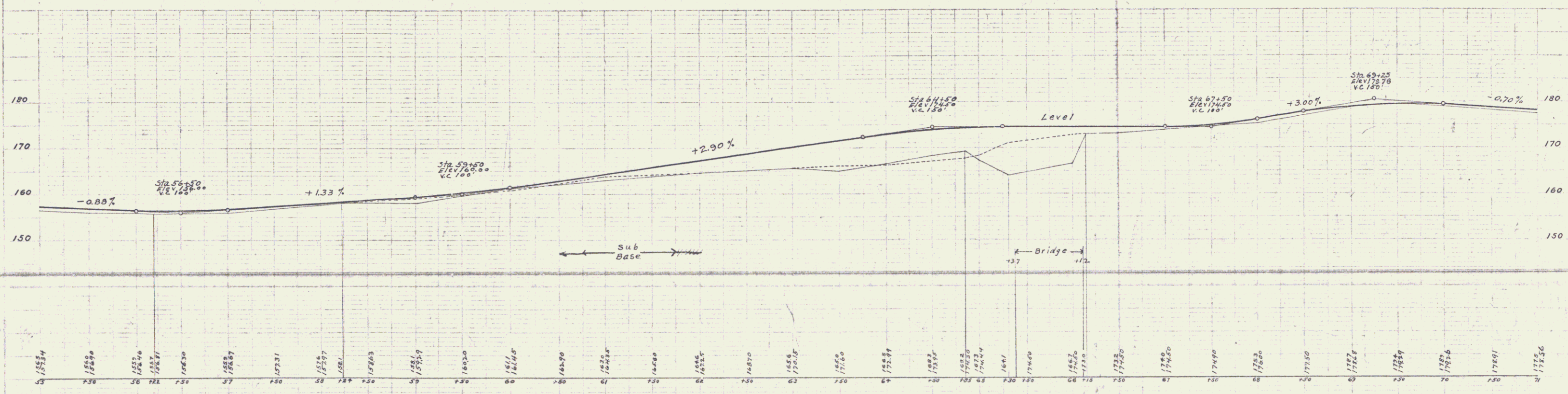
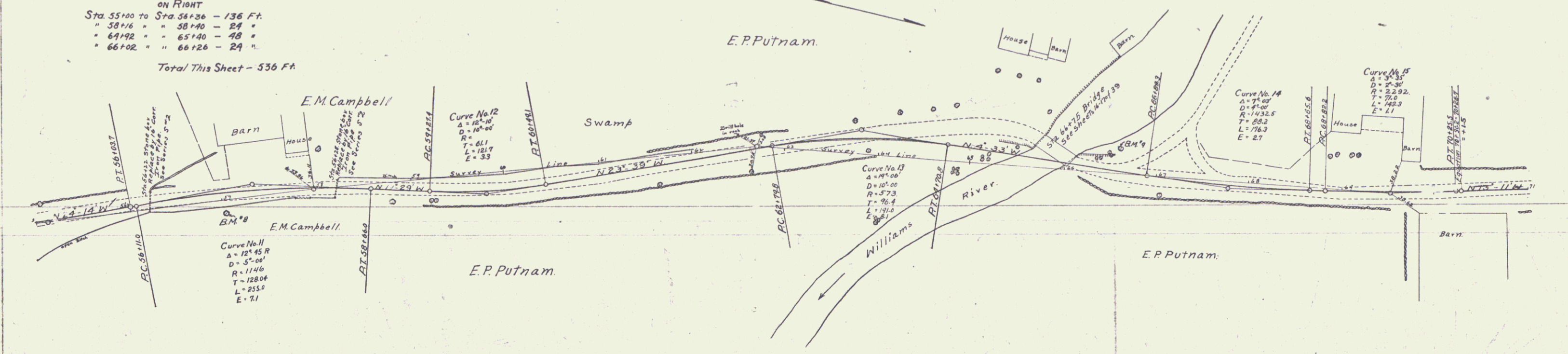
Total This Sheet - 536 Ft.

NEW CULVERTS REQUIRED

Sta. 56+22 - 16' Corr. Iron Pipe Culvert - 32 Ft. Long
 1-2 1/2 - 3 Concrete - 17 Cu. Yds.

Sta. 58+28 - 16' Corr. Iron Pipe Culvert - 26 Ft. Long
 1-2 1/2 - 3 Concrete - 17 Cu. Yds.

SUB-BASE REQUIRED 125
 Sta. 60+75 to Sta. 61+75 - Length - 100 Ft.



Station	Elevation
55+00	155.34
55+10	156.00
55+20	156.46
55+30	156.71
55+40	156.80
55+50	156.87
55+60	156.91
55+70	156.93
55+80	156.94
55+90	156.94
56+00	156.94
56+10	156.94
56+20	156.94
56+30	156.94
56+40	156.94
56+50	156.94
56+60	156.94
56+70	156.94
56+80	156.94
56+90	156.94
57+00	156.94
57+10	156.94
57+20	156.94
57+30	156.94
57+40	156.94
57+50	156.94
57+60	156.94
57+70	156.94
57+80	156.94
57+90	156.94
58+00	156.94
58+10	156.94
58+20	156.94
58+30	156.94
58+40	156.94
58+50	156.94
58+60	156.94
58+70	156.94
58+80	156.94
58+90	156.94
59+00	156.94
59+10	156.94
59+20	156.94
59+30	156.94
59+40	156.94
59+50	156.94
59+60	156.94
59+70	156.94
59+80	156.94
59+90	156.94
60+00	156.94
60+10	156.94
60+20	156.94
60+30	156.94
60+40	156.94
60+50	156.94
60+60	156.94
60+70	156.94
60+80	156.94
60+90	156.94
61+00	156.94
61+10	156.94
61+20	156.94
61+30	156.94
61+40	156.94
61+50	156.94
61+60	156.94
61+70	156.94
61+80	156.94
61+90	156.94
62+00	156.94
62+10	156.94
62+20	156.94
62+30	156.94
62+40	156.94
62+50	156.94
62+60	156.94
62+70	156.94
62+80	156.94
62+90	156.94
63+00	156.94
63+10	156.94
63+20	156.94
63+30	156.94
63+40	156.94
63+50	156.94
63+60	156.94
63+70	156.94
63+80	156.94
63+90	156.94
64+00	156.94
64+10	156.94
64+20	156.94
64+30	156.94
64+40	156.94
64+50	156.94
64+60	156.94
64+70	156.94
64+80	156.94
64+90	156.94
65+00	156.94
65+10	156.94
65+20	156.94
65+30	156.94
65+40	156.94
65+50	156.94
65+60	156.94
65+70	156.94
65+80	156.94
65+90	156.94
66+00	156.94
66+10	156.94
66+20	156.94
66+30	156.94
66+40	156.94
66+50	156.94
66+60	156.94
66+70	156.94
66+80	156.94
66+90	156.94
67+00	156.94
67+10	156.94
67+20	156.94
67+30	156.94
67+40	156.94
67+50	156.94
67+60	156.94
67+70	156.94
67+80	156.94
67+90	156.94
68+00	156.94
68+10	156.94
68+20	156.94
68+30	156.94
68+40	156.94
68+50	156.94
68+60	156.94
68+70	156.94
68+80	156.94
68+90	156.94
69+00	156.94
69+10	156.94
69+20	156.94
69+30	156.94
69+40	156.94
69+50	156.94
69+60	156.94
69+70	156.94
69+80	156.94
69+90	156.94
70+00	156.94
70+10	156.94
70+20	156.94
70+30	156.94
70+40	156.94
70+50	156.94
70+60	156.94
70+70	156.94
70+80	156.94
70+90	156.94
71+00	156.94

Series F No 54B
 Sheet 6 of 39

5

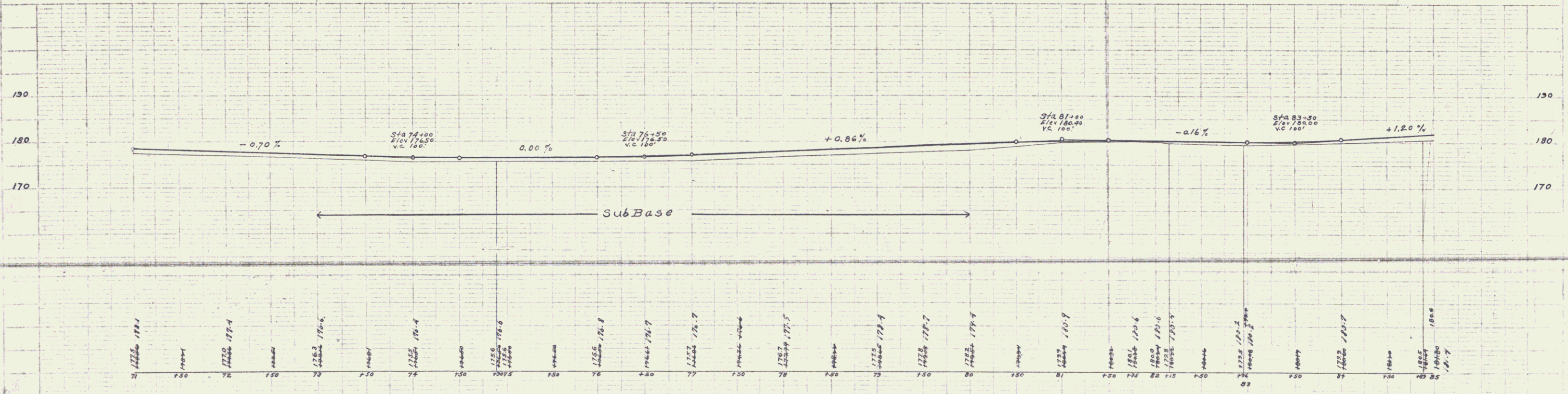
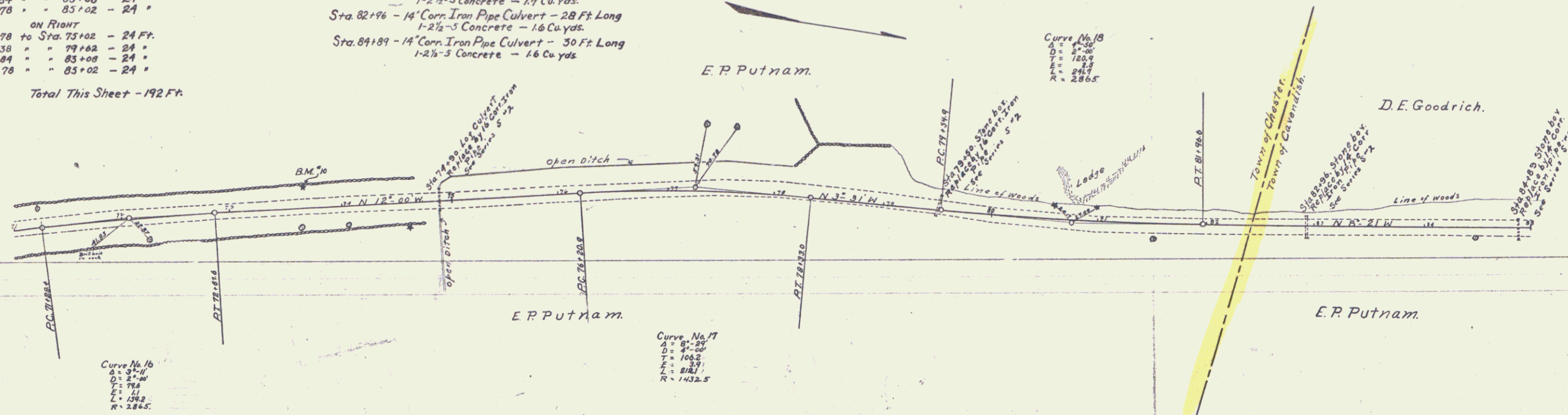
GUARD RAIL REQUIRED
 ON LEFT
 Sta. 74+78 to Sta. 75+02 - 24 Ft.
 " 79+38 " " 79+62 - 24 "
 " 82+24 " " 83+08 - 24 "
 " 84+78 " " 85+02 - 24 "
 ON RIGHT
 Sta. 74+78 to Sta. 75+02 - 24 Ft.
 " 79+38 " " 79+62 - 24 "
 " 82+24 " " 83+08 - 24 "
 " 84+78 " " 85+02 - 24 "

Total This Sheet - 192 Ft.

NEW CULVERTS REQUIRED
 Sta. 74+90 - 16" Cor. Iron Pipe Culvert - 36 Ft. Long
 1-2 1/2-5 Concrete - 17 Cu. yds.
 Sta. 79+50 - 16" Cor. Iron Pipe Culvert - 30 Ft. Long
 1-2 1/2-5 Concrete - 17 Cu. yds.
 Sta. 82+96 - 14" Cor. Iron Pipe Culvert - 28 Ft. Long
 1-2 1/2-5 Concrete - 16 Cu. yds.
 Sta. 84+89 - 14" Cor. Iron Pipe Culvert - 30 Ft. Long
 1-2 1/2-5 Concrete - 16 Cu. yds.

SUB-BASE REQUIRED
 Sta. 75+00 to Sta. 80+00 - Length 500'

FED. ROAD DIST. NO.	STATE	FED. AID PROJ. NO.	YEAR	SHEET NO.	TOTAL SHEETS
0	Vt.	5-2-B	1923	7	39



6

FED. ROAD DIST. NO.	STATE	FED. AID FISCAL YEAR	SHEET NO.	TOTAL SHEETS
9	VT	54 B	8	39

GUARD RAIL REQUIRED

on LEFT

Sta. 87+94 to Sta. 88+18	- 24 Ft.
" 87+88 " " 90+12	- 24 "
" 94+18 " " 94+42	- 24 "
" 96+72 " " 96+96	- 24 "

on RIGHT

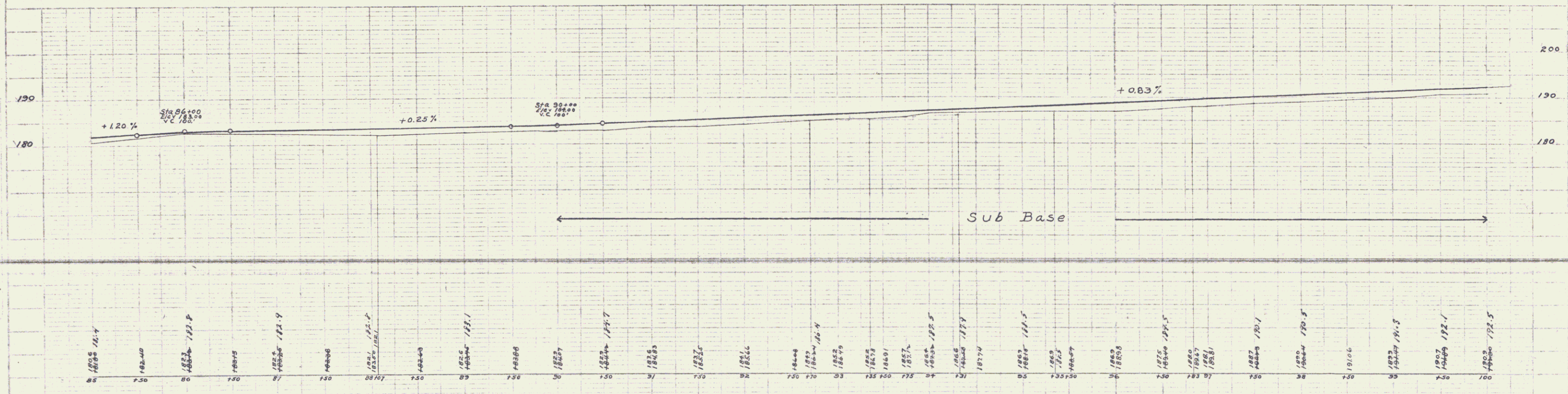
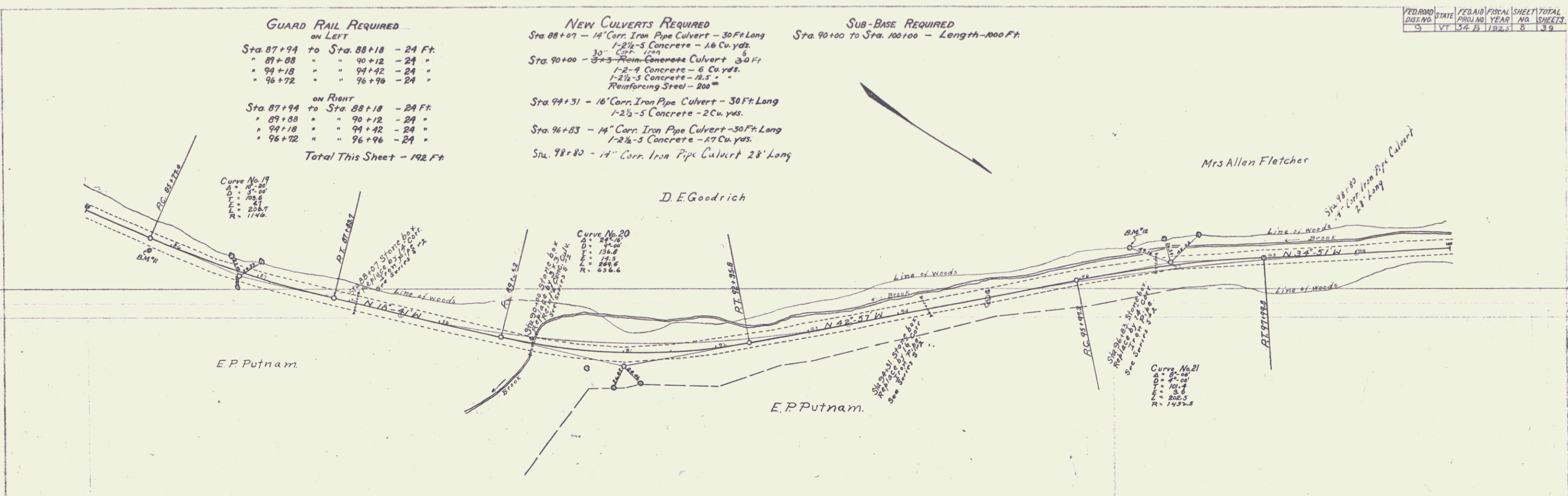
Sta. 87+94 to Sta. 88+18	- 24 Ft.
" 87+88 " " 90+12	- 24 "
" 94+18 " " 94+42	- 24 "
" 96+72 " " 96+96	- 24 "

Total This Sheet - 192 Ft.

NEW CULVERTS REQUIRED

Sta. 88+07 - 14" Corr. Iron Pipe Culvert - 30 Ft. Long
1-2 1/2-5 Concrete - 16 Cu. yds.
30' Rein. Steel - 1500'
Sta. 90+00 - 3'x3' Rein. Concrete Culvert - 30 Ft. Long
1-2-4 Concrete - 6 Cu. yds.
1-2 1/2-5 Concrete - 2.5 "
Reinforcing Steel - 200'
Sta. 94+31 - 16" Corr. Iron Pipe Culvert - 30 Ft. Long
1-2 1/2-5 Concrete - 2 Cu. yds.
Sta. 96+83 - 14" Corr. Iron Pipe Culvert - 30 Ft. Long
1-2 1/2-5 Concrete - 17 Cu. yds.
Sta. 98+80 - 14" Corr. Iron Pipe Culvert - 28' Long

SUB-BASE REQUIRED
Sta. 90+00 to Sta. 100+00 - Length - 100 Ft.



PLAN
DATE: 8/1/13
BY: [Signature]

PROFILE
DATE: 8/1/13
BY: [Signature]

FED. ROAD DIST. NO.	STATE	FED. AID PROJ. NO.	FISCAL YEAR	SHEET NO.	TOTAL SHEETS
5	VT	5213	1925	9	39

GUARD RAIL REQUIRED ON LEFT

Sta. 103+66 to Sta. 103+90 - 24 Ft.
" 105+16 " " 105+40 - 24 Ft.
" 106+22 " " 106+46 - 24 "
" 107+76 " " 108+00 - 24 "
" 108+60 " " 108+84 - 24 "
" 109+68 " " 109+92 - 24 "

ON RIGHT

Sta. 103+66 to Sta. 103+90 - 24 Ft.
" 105+16 " " 105+40 - 24 "
" 106+22 " " 106+46 - 24 "
" 107+76 " " 108+00 - 24 "
" 108+60 " " 108+84 - 24 "
" 109+68 " " 109+92 - 24 "

NEW CULVERTS REQUIRED

Sta. 103+90 - 14" Corr. Iron Culvert 28' Long
1-2 1/2-5 Concrete - 17 Cu. yds

Sta. 105+28 - 14" Corr. Iron Pipe Culvert - 28 Ft Long
1-2 1/2-5 Concrete - 17 Cu. yds

Sta. 106+33 - 14" Corr. Iron Pipe Culvert - 32 Ft Long
1-2 1/2-5 Concrete - 17 Cu. yds

Sta. 107+88 - 14" Corr. Iron Pipe Culvert - 32 Ft Long
1-2 1/2-5 Concrete - 17 Cu. yds

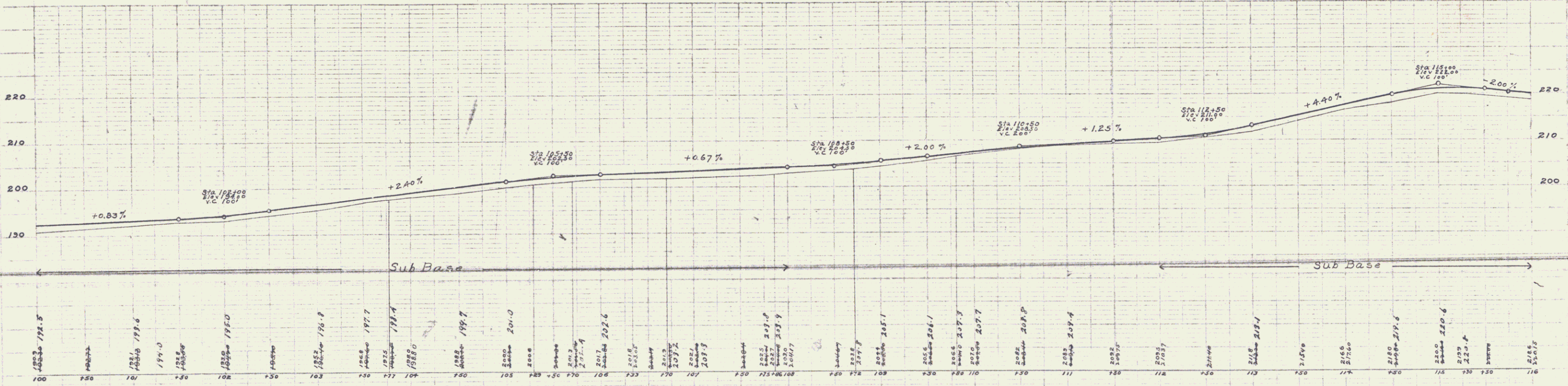
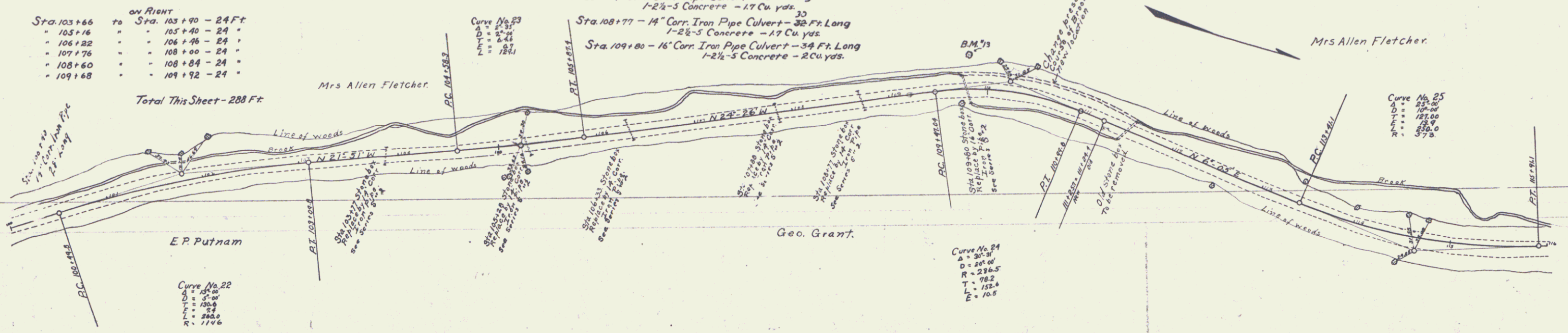
Sta. 108+77 - 14" Corr. Iron Pipe Culvert - 32 Ft Long
1-2 1/2-5 Concrete - 17 Cu. yds

Sta. 109+80 - 16" Corr. Iron Pipe Culvert - 34 Ft Long
1-2 1/2-5 Concrete - 20 Cu. yds.

SUB-BASE REQUIRED

Sta. 100+00 to Sta. 104+00 - Length 600 Ft.

Sta. 112+00 to Sta. 116+00 - Length 400 Ft.



E.P. Putnam
 Geo. Grant
 Mrs. Allen Fletcher

E.P. Putnam
 Geo. Grant
 Mrs. Allen Fletcher

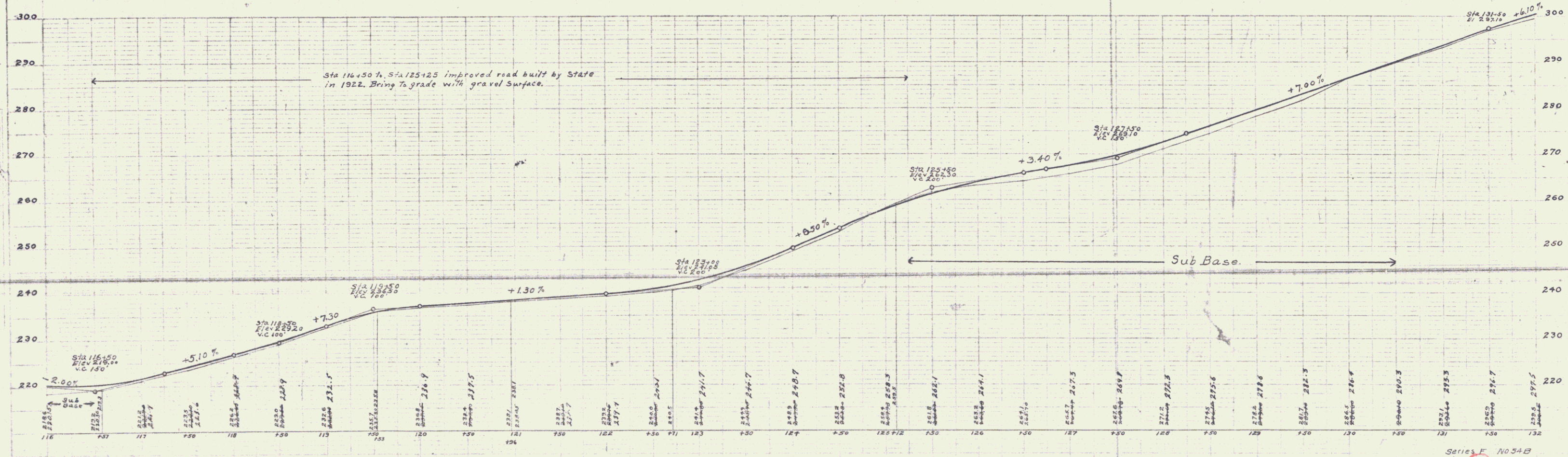
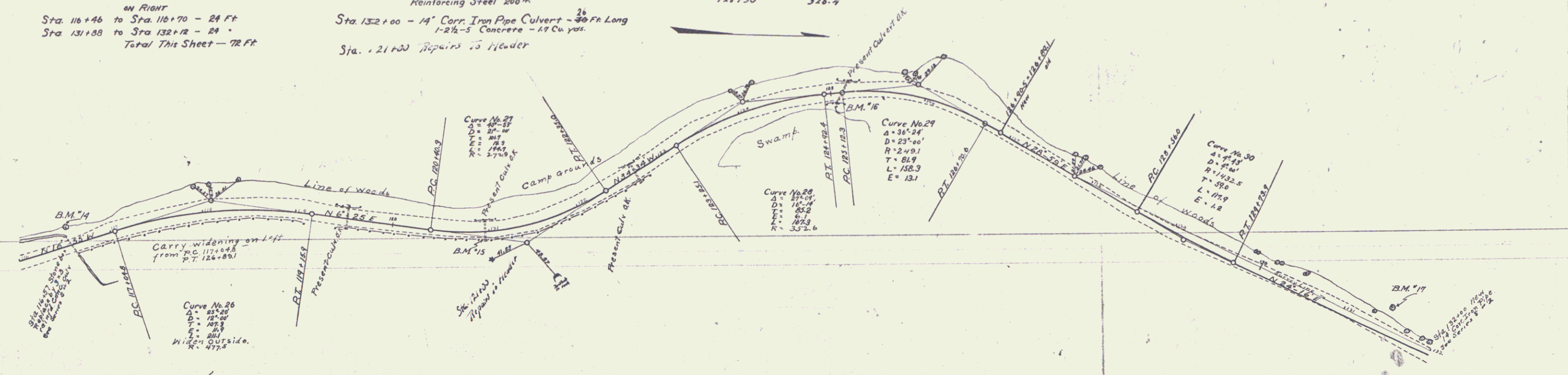
8

FED. ROAD DIST. NO.	STATE	FED. AID PROJ. NO.	FISCAL YEAR	SHEET NO.	TOTAL SHEETS
5	VT	443	1952	10	39

GUARD RAIL REQUIRED
 ON LEFT
 Sta. 116+46 to Sta. 116+70 - 24 Ft.
 ON RIGHT
 Sta. 116+46 to Sta. 116+70 - 24 Ft.
 Sta. 131+98 to Sta. 132+12 - 24 Ft.
 Total This Sheet - 72 Ft.

NEW CULVERTS REQUIRED
 Sta. 116+57 - 3x3 Rein. Conc. Culvert - 30 Ft.
 1-2-4 Concrete 6 Cu. yds.
 1-2 1/2-5 Concrete 25 " "
 Reinforcing Steel 200 #
 Sta. 132+00 - 14" Corr. Iron Pipe Culvert - 30 Ft. Long
 1-2 1/2-5 Concrete - 17 Cu. yds.
 Sta. 121+20 Repairs to Header

SUB-BASE REQUIRED
 Sta. 116+00 to Sta. 116+50 - Length 50 Ft.
 Sta. 125+25 to Sta. 136+50 - Length 526.4 Ft.
 122+50 326.4



Series F No 54B
 Sheet 10 of 39

9

GUARD RAIL REQUIRED

ON LEFT

Sta. 131+08 to Sta. 137+04 - 616 Ft.
 " 139+08 " 140+12 - 24 "
 " 140+38 " 144+54 - 416 "
 " 145+06 " 145+30 - 24 "

ON RIGHT

Sta. 134+08 to Sta. 135+12 - 24 Ft.
 " 136+54 " 136+70 - 24 "
 " 139+08 " 140+12 - 24 "
 " 140+38 " 140+62 - 24 "
 " 143+24 " 143+40 - 24 "
 " 145+06 " 145+30 - 24 "

Total This Sheet - 1224 Ft.

NEW CULVERTS REQUIRED

Sta. 135+00 - 14" Corr. Iron Pipe Culvert - 40 Ft. Long
 + 2 1/2 - 5 Concrete - 2 Cu. yds.

Sta. 137+00 - 14" Corr. Iron Pipe Culvert - 32 Ft. Long
 + 2 1/2 - 5 Concrete - 4 Cu. yds.

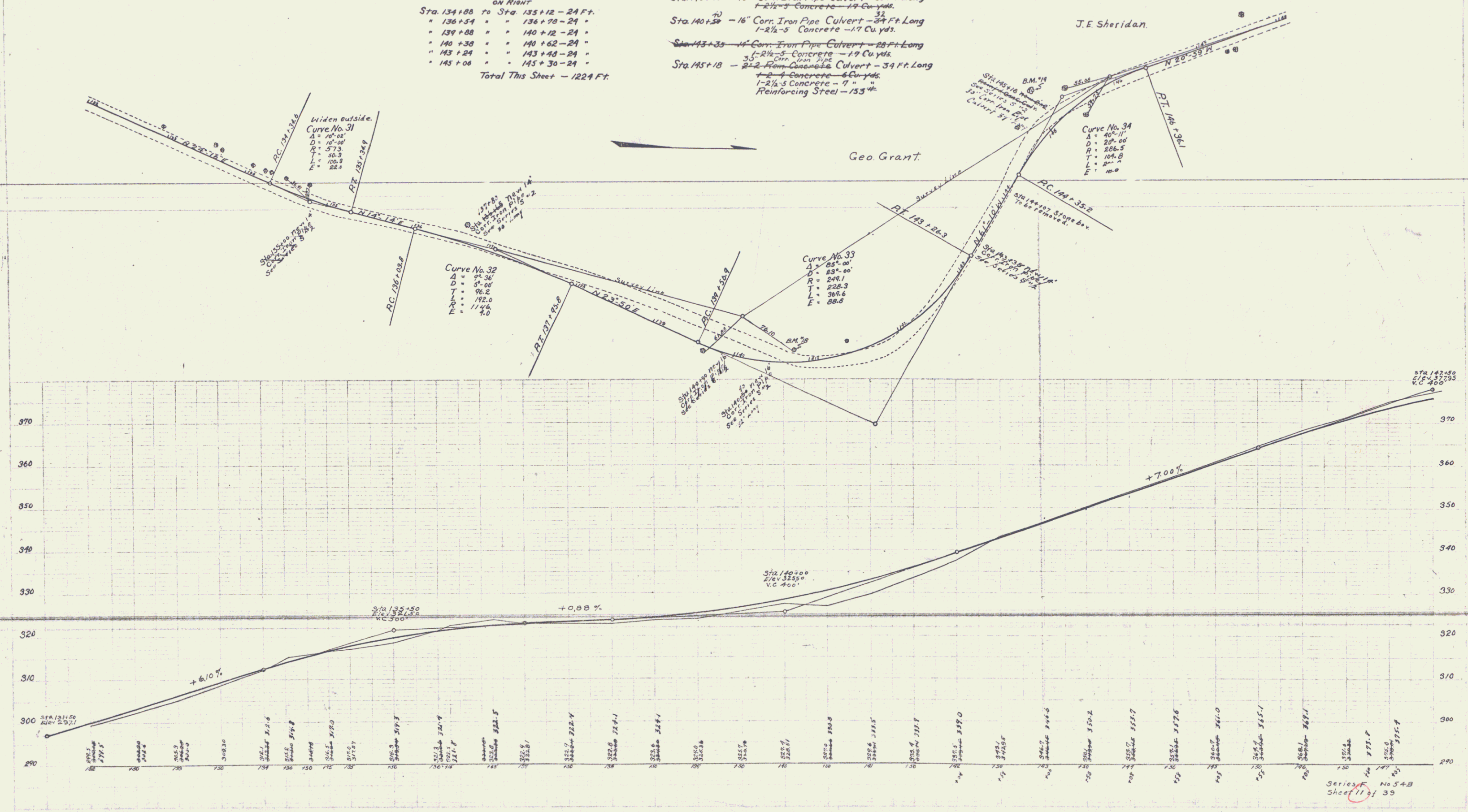
Sta. 144+00 - 16" Corr. Iron Pipe Culvert - 30 Ft. Long
 + 2 1/2 - 5 Concrete - 14 Cu. yds.

Sta. 140+50 - 16" Corr. Iron Pipe Culvert - 24 Ft. Long
 + 2 1/2 - 5 Concrete - 17 Cu. yds.

Sta. 143+30 - 16" Corr. Iron Pipe Culvert - 20 Ft. Long
 + 2 1/2 - 5 Concrete - 19 Cu. yds.

Sta. 145+18 - 22" Form-Cast-in-place Culvert - 34 Ft. Long
 + 2 - 4 Concrete - 6 Cu. yds.
 + 2 1/2 - 5 Concrete - 7 "
 Reinforcing Steel - 153 #

STONE BASE REQUIRED
 145+50 - 148+00 - 250'



GUARD RAIL REQUIRED

- ON LEFT**
- Sta. 148+95 to Sta. 149+19 - 24 Ft.
 - " 148+96 " " 149+20 - 24 "
 - " 150+04 " " 151+24 - 120 "
 - " 152+97 " " 153+21 - 24 "
 - " 156+10 " " 162+02 - 592 "
- ON RIGHT**
- Sta. 147+10 to Sta. 149+50 - 210 Ft.
 - " 148+42 " " 149+14 - 152 "
 - " 152+97 " " 153+21 - 24 "
 - " 156+10 " " 156+34 - 24 "
 - " 156+08 " " 157+12 - 24 "
 - " 157+88 " " 158+12 - 24 "
 - " 160+38 " " 160+62 - 24 "
- Total This Sheet - 1266 Ft.

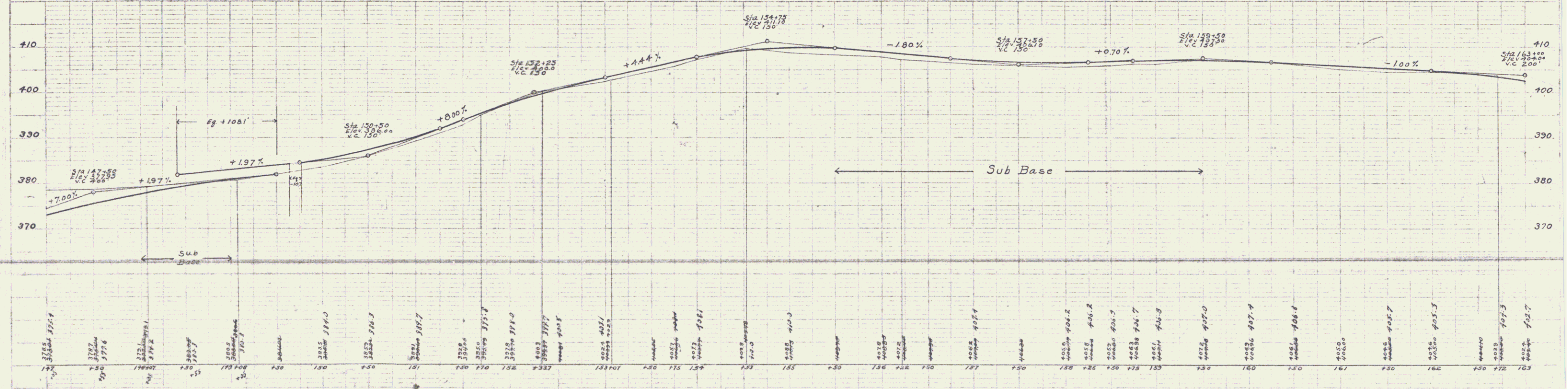
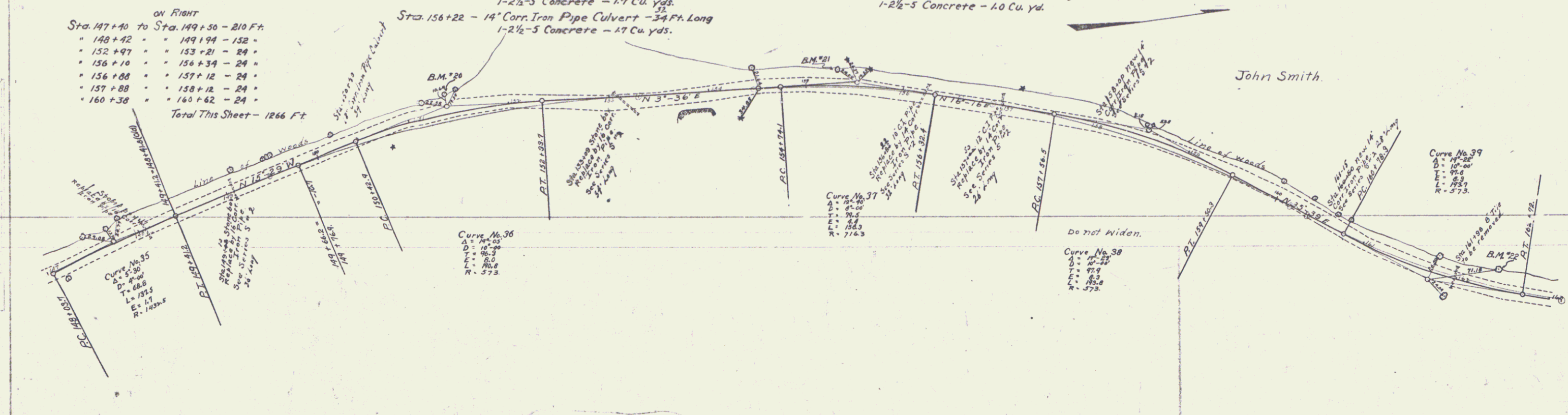
NEW CULVERTS REQUIRED

- Sta. 149+09 - 16" Corr. Iron Pipe Culvert - 36 Ft. Long
1-2 1/2-5 Concrete - 17 Cu. yds.
- Sta. 149+08 - 16" Corr. Iron Pipe Culvert - 34 Ft. Long
1-2 1/2-5 Concrete - 17 Cu. yds.
- Sta. 153+09 - 16" Corr. Iron Pipe Culvert - 38 Ft. Long
1-2 1/2-5 Concrete - 17 Cu. yds.
- Sta. 156+22 - 14" Corr. Iron Pipe Culvert - 34 Ft. Long
1-2 1/2-5 Concrete - 17 Cu. yds.
- Sta. 157+50 - 14" Corr. Iron Pipe Culvert - 38 Ft. Long
1-2 1/2-5 Concrete - 17 Cu. yds.
- Sta. 158+00 - 14" Corr. Iron Pipe Culvert - 34 Ft. Long
1-2 1/2-5 Concrete - 17 Cu. yds.
- Sta. 160+50 - 14" Corr. Iron Pipe Culvert - 30 Ft. Long
1-2 1/2-5 Concrete - 10 Cu. yds.

SUB-BASE REQUIRED

- Sta. 148+30 to Sta. 149+00 - Length 400 Ft.
- Sta. 155+50 to Sta. 164+50 - Length 400 Ft.

FED. FUND	FED. AID	FISCAL	SHEET	TOTAL
DATE	NO.	YEAR	NO.	SHEET
5	17	1928	12	38



Series No. 54B
Sheet 12 of 38

GUARD RAIL REQUIRED ON LEFT

Sta. 164+50 to Sta. 166+10 - 160 Ft.
 " 167+88 " " 168+12 - 24 "
 " 171+00 " " 171+48 - 48 "
 " 173+00 " " 174+60 - 160 "
 " 176+17 " " 176+41 - 24 "

ON RIGHT

Sta. 165+72 to Sta. 165+96 - 24 Ft.
 " 167+88 " " 168+12 - 24 "
 " 171+00 " " 171+24 - 24 "
 " 176+71 " " 176+41 - 24 "
 " 178+18 " " 178+42 - 24 "
 " 178+88 " " 179+12 - 24 "

This Sheet - Total - 560 Ft.

NEW CULVERTS REQUIRED

Sta. 165+83 - 16" Corr. Iron Pipe Culvert - 34 Ft. Long
 1-2 1/2 - 5 Concrete - 1.7 Cu. yds.
 Sta. 168+00 - 14" Corr. Iron Pipe Culvert - 32 Ft. Long
 1-2 1/2 - 5 Concrete - 1.7 Cu. yds.
 Sta. 170+29 - 14" Corr. Iron Pipe Culvert - 24 Ft. Long
 1-2 1/2 - 5 Concrete - 1.7 Cu. yds.
 Sta. 172+70 - 14" Corr. Iron Pipe Culvert - 34 Ft. Long
 1-2 1/2 - 5 Concrete - 1.7 Cu. yds.
 Sta. 175+30 - 16" Corr. Iron Pipe Culvert - 34 Ft. Long
 1-2 1/2 - 5 Concrete - 1.7 Cu. yds.
 Sta. 177+00 - 3 1/2 - Reinf. Conc. Culvert - 30 Ft. Long
 1-2-4 Concrete - 4 Cu. yds.
 1-2 1/2 - 5 Concrete - 12.5 Cu. yds.
 Reinforcing Steel - 200 lbs.

FED. ROAD DIST. NO.	FED. AID FISCAL YEAR	SHEET NO.	TOTAL SHEETS
17	1923	13	39

