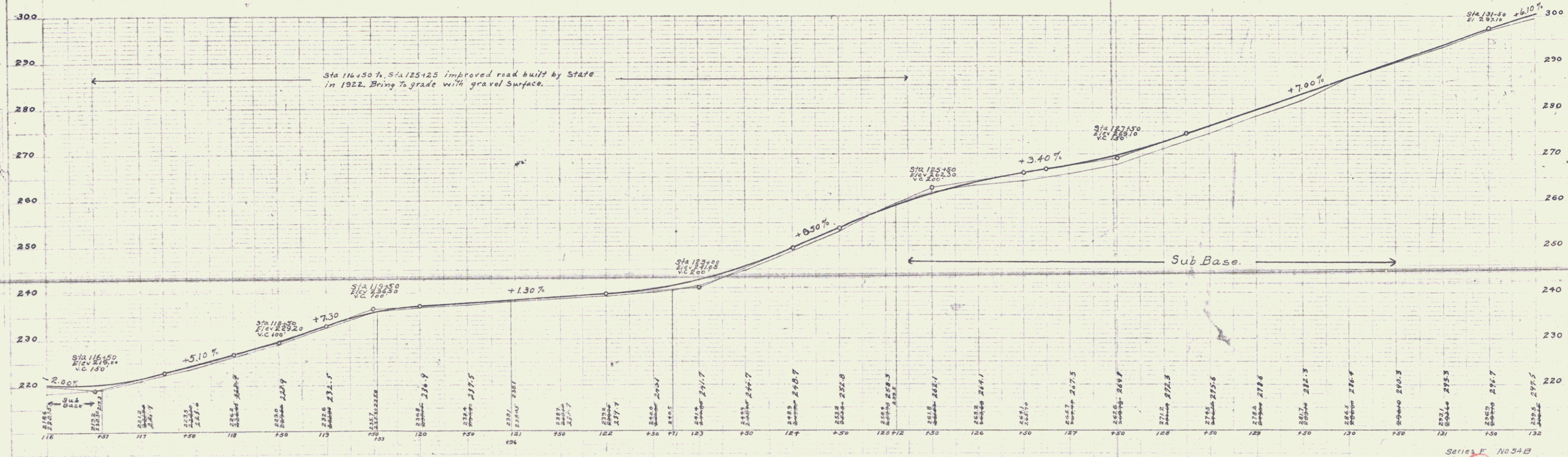
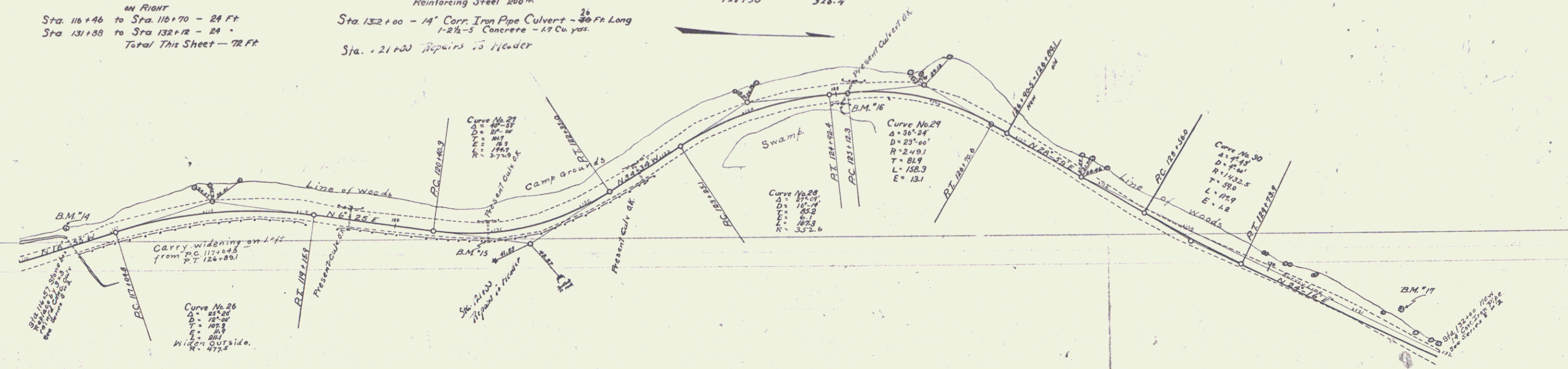


FED. ROAD DIST. NO.	STATE	FED. AID PROJ. NO.	FISCAL YEAR	SHEET NO.	TOTAL SHEETS
5	VT	443	1952	10	39

**GUARD RAIL REQUIRED**  
 ON LEFT  
 Sta. 116+46 to Sta. 116+70 - 24 Ft.  
 ON RIGHT  
 Sta. 116+46 to Sta. 116+70 - 24 Ft.  
 Sta. 131+98 to Sta. 132+12 - 24 Ft.  
 Total This Sheet - 72 Ft.

**NEW CULVERTS REQUIRED**  
 Sta. 116+57 - 3x3 Rein. Conc. Culvert - 30 Ft.  
 1-2-4 Concrete 6 Cu. yds.  
 1-2 1/2-5 Concrete 25 " "  
 Reinforcing Steel 200 #  
 Sta. 132+00 - 14" Corr. Iron Pipe Culvert - 30 Ft. Long  
 1-2 1/2-5 Concrete - 17 Cu. yds.  
 Sta. 121+20 Repairs to Header

**SUB-BASE REQUIRED**  
 Sta. 116+00 to Sta. 116+50 - Length 50 Ft.  
 Sta. 125+25 to Sta. 130+50 - Length 526.4 Ft.  
 122+50 326.4



Series F No. 54B  
 Sheet 10 of 39