

FED. ROAD DIST. NO.	STATE	FED. AID PROJ. NO.	LOCAL YEAR	SHEET NO.	TOTAL SHEETS
5	VT	5213	1925	9	39

**GUARD RAIL REQUIRED ON LEFT**

Sta. 103+66 to Sta. 103+90 - 24 Ft.
" 105+16 " " 105+40 - 24 Ft.
" 106+22 " " 106+46 - 24 "
" 107+76 " " 108+00 - 24 "
" 108+60 " " 108+84 - 24 "
" 109+68 " " 109+92 - 24 "

**ON RIGHT**

Sta. 103+66 to Sta. 103+90 - 24 Ft.
" 105+16 " " 105+40 - 24 "
" 106+22 " " 106+46 - 24 "
" 107+76 " " 108+00 - 24 "
" 108+60 " " 108+84 - 24 "
" 109+68 " " 109+92 - 24 "

**NEW CULVERTS REQUIRED**

Sta. 103+90 - 14" Corr. Iron Culvert 28' Long  
1-2 1/2-5 Concrete - 17 Cu. yds

Sta. 105+28 - 14" Corr. Iron Pipe Culvert - 28 Ft Long  
1-2 1/2-5 Concrete - 17 Cu. yds

Sta. 106+33 - 14" Corr. Iron Pipe Culvert - 32 Ft Long  
1-2 1/2-5 Concrete - 17 Cu. yds

Sta. 107+88 - 14" Corr. Iron Pipe Culvert - 32 Ft Long  
1-2 1/2-5 Concrete - 17 Cu. yds

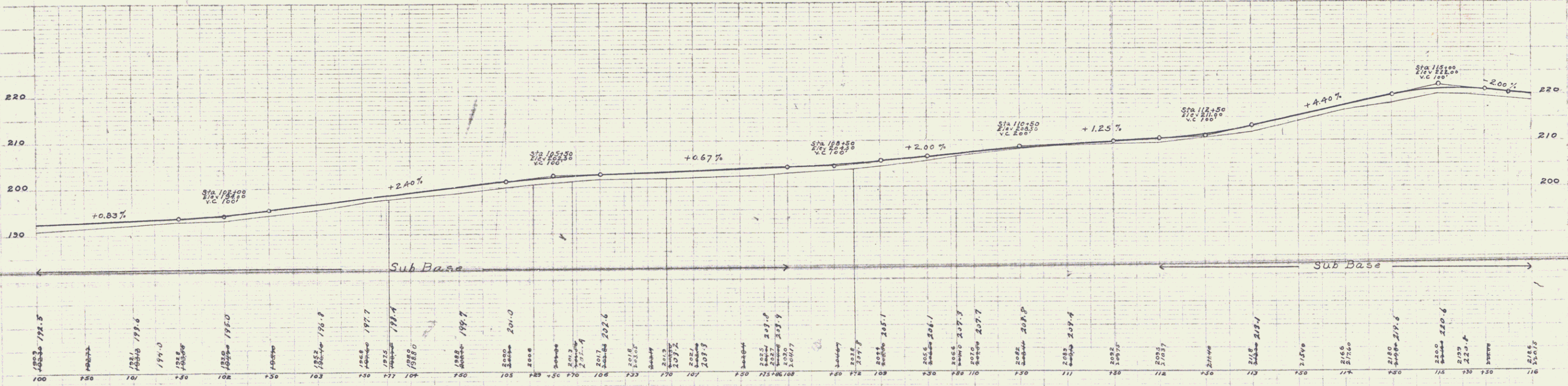
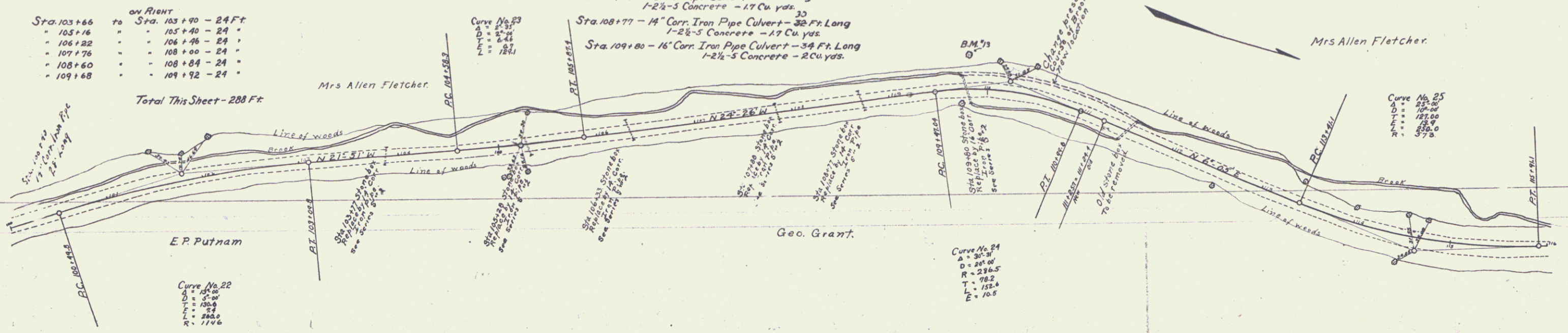
Sta. 108+77 - 14" Corr. Iron Pipe Culvert - 32 Ft Long  
1-2 1/2-5 Concrete - 17 Cu. yds

Sta. 109+80 - 16" Corr. Iron Pipe Culvert - 34 Ft Long  
1-2 1/2-5 Concrete - 20 Cu. yds.

**SUB-BASE REQUIRED**

Sta. 100+00 to Sta. 104+00 - Length 600 Ft.

Sta. 112+00 to Sta. 116+00 - Length 400 Ft.



MINOR  
D.L. Lord

E.P. Putnam  
Geo. Grant