

| DATE | BY | NO. | YEAR | SHEET NO. | TOTAL SHEETS |
|------|----|-----|------|-----------|--------------|
| 9 | VT | 3-2 | 1925 | 6 | 39 |

GUARD RAIL REQUIRED

ON LEFT
 Sta. 56+10 to Sta. 56+34 - 24 Ft.
 " 58+16 " " 58+40 - 24 "
 " 63+32 " " 65+40 - 208 "
 " 66+02 " " 66+50 - 48 "

ON RIGHT
 Sta. 55+00 to Sta. 56+36 - 136 Ft.
 " 58+16 " " 58+40 - 24 "
 " 64+92 " " 65+40 - 48 "
 " 66+02 " " 66+26 - 24 "

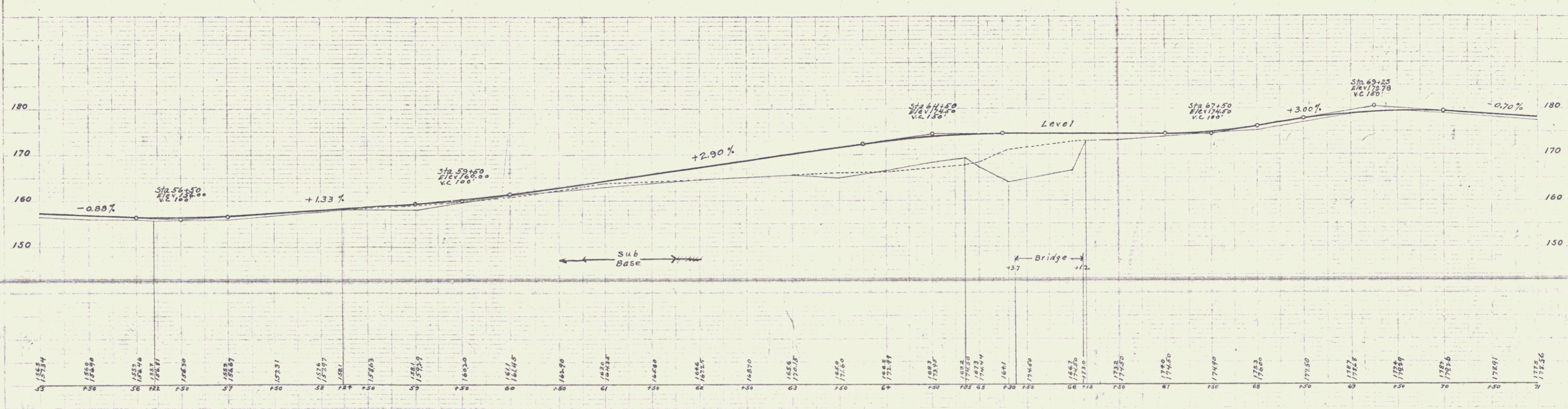
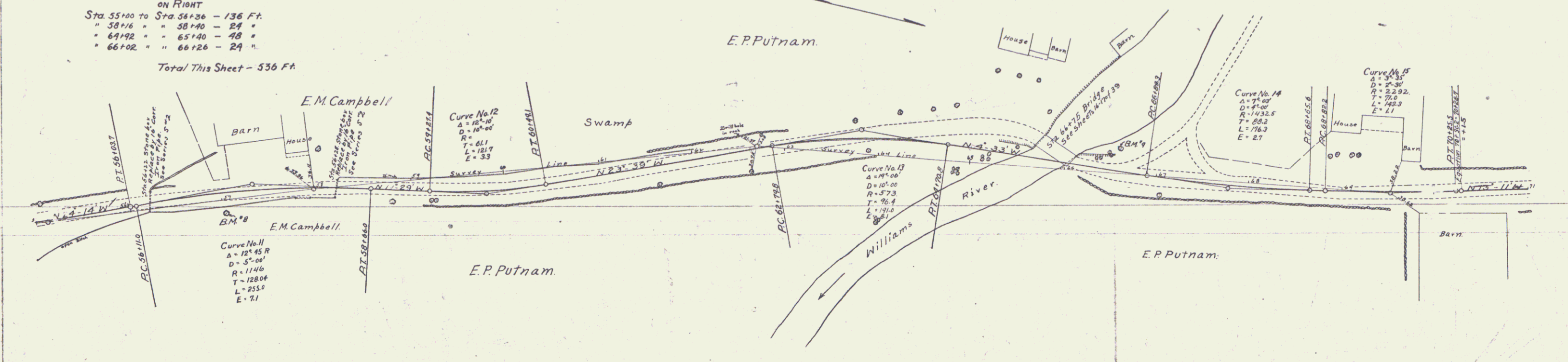
Total This Sheet - 536 Ft.

NEW CULVERTS REQUIRED

Sta. 56+22 - 16' Corr. Iron Pipe Culvert - 32 Ft. Long
 1-2 1/2-3 Concrete - 17 Cu. Yds.

Sta. 58+28 - 16' Corr. Iron Pipe Culvert - 26 Ft. Long
 1-2 1/2-3 Concrete - 17 Cu. Yds.

SUB-BASE REQUIRED 125
 Sta. 60+75 to Sta. 61+75 - Length - 100 Ft.



Series F No. 54B
 Sheet 6 of 39

5