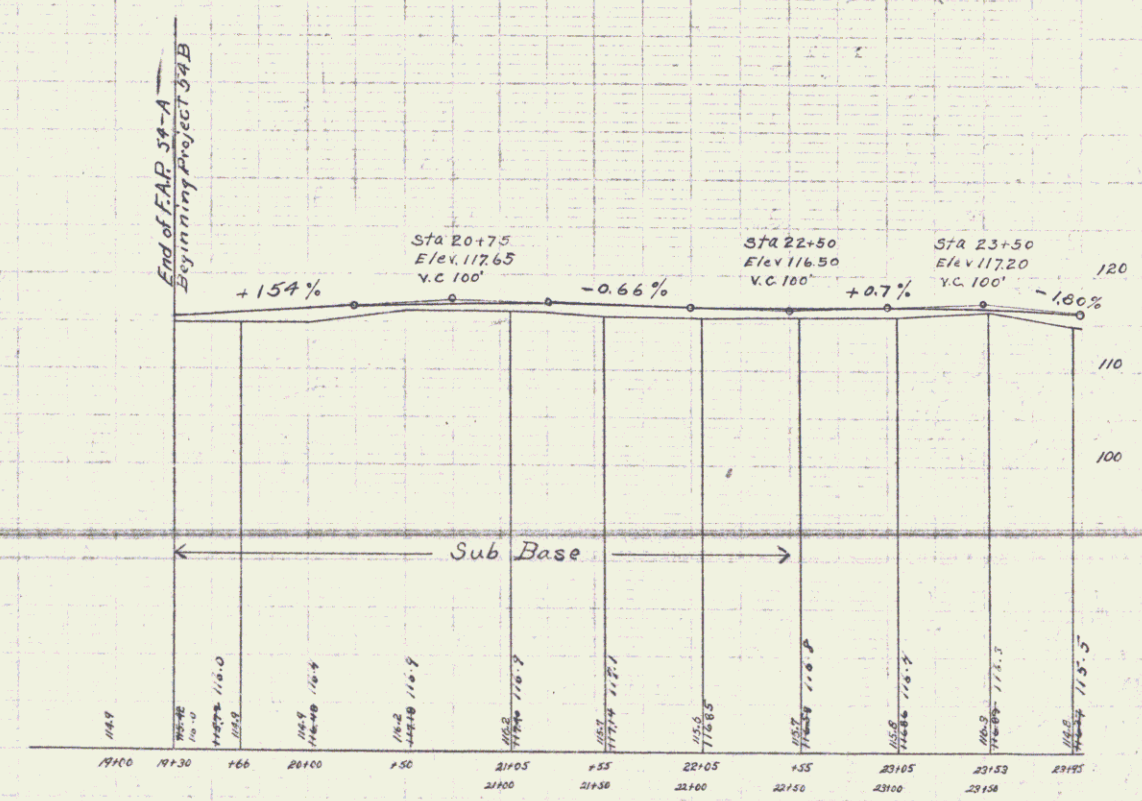
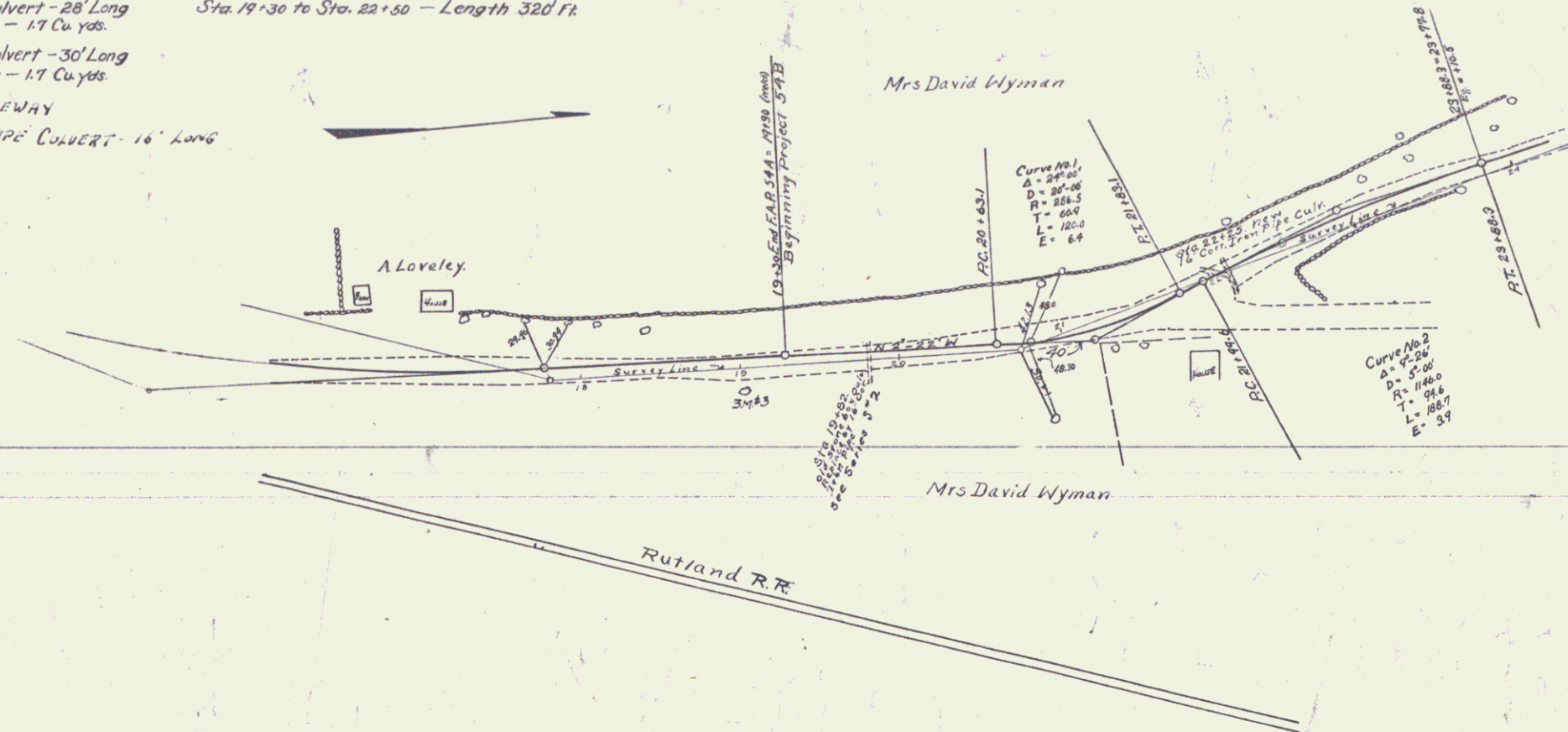


GUARD RAIL REQUIRED
 ON LEFT
 Sta. 19+70 to Sta. 19+94 Length 24 Ft.
 " 22+12 " " 22+36 " 24 "
 ON RIGHT
 Sta. 19+70 to Sta. 19+94 Length 24 Ft.
 " 22+12 " " 22+36 " 24 "
 Total This Sheet 96 Ft.

NEW CULVERTS REQUIRED
 Sta. 19+82 - 16" Cor. Iron Pipe Culvert - 28' Long
 1-2 1/2-3 Concrete - 1.7 Cu. yds.
 Sta. 22+25 - 16" Cor. Iron Pipe Culvert - 30' Long
 1-2 1/2-3 Concrete - 1.7 Cu. yds.
 Sta. 21+00 Lt. WYMAN DRIVEWAY
 14" Cor. Iron Pipe Culvert - 16' Long

SUB BASE REQUIRED
 Sta. 19+30 to Sta. 22+50 - Length 320 Ft.

FED. ROAD DIST. NO.	STATE	FED. AID PROJ. NO.	FISCAL YEAR	SHEET NO.	TOTAL SHEETS
9	VT	372	1955	3	39



Series No 54B
 Sheet 3 of 39