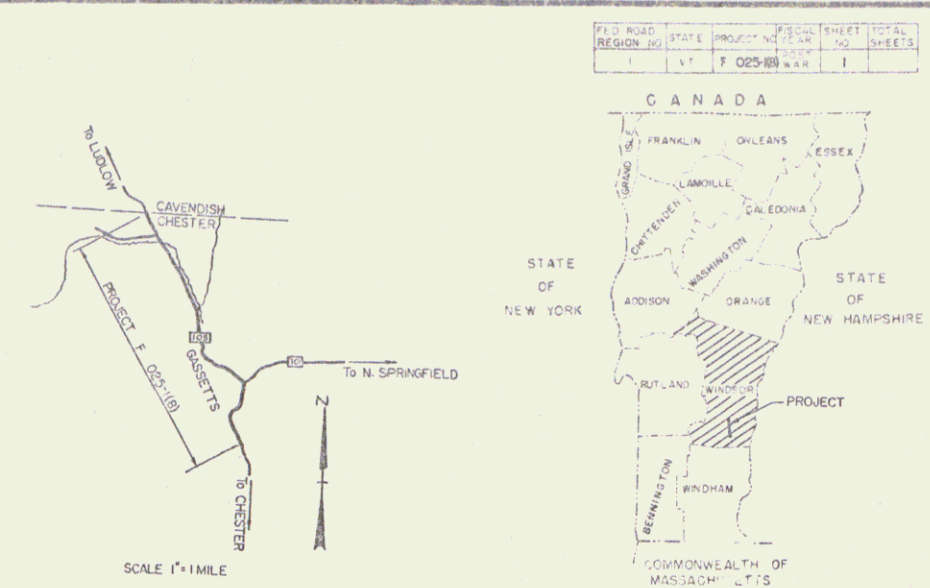


INDEX OF SHEETS

SHEET 1	GENERAL SHEETS
2	TITLE PAGE
3	TYPICAL ROADWAY SECTIONS BITUMINOUS CONCRETE PAVEMENT
4	QUANTITY SHEET, ITEMS
5	QUANTITY SHEET, ITEMS
6, 7, 8, 8 A	EARTH-WORK SHEETS
9-12, 12A, 13-20	PLAN & PROFILE SHEETS
21-23	SUPERELEVATION TRANSITION, TALC MILL UNDERPASS
24	BRIDGE AT STA. 114+50
25A	PRELIMINARY INFORMATION SHEET GENERAL PLAN & ELEVATION
26-32	BRIDGE DETAILS
33	BLANK
34	BLANK
35	BRIDGE AT STA. 165+40
36A	PRELIMINARY INFORMATION SHEET GENERAL PLAN & ELEVATION
37-44	BRIDGE DETAILS
DEPARTMENT STANDARDS	
45-	ROADWAY STANDARDS B-1, B-5, B-6, D-1, D-2, D-3, D-4, D-8, D-10, D-11, D-13, E-1, E-9, G-2, G-3, G-4, H-1a, H-1b, J-1
67-71	BRIDGE STANDARDS SCB-30-58, SHT I; SCB-30-58, SHT II
CROSS SECTIONS	
72-107	HIGHWAY RELOCATION
108-193	ROUTE 10 INTERSECTION, TOWN RD. NO. 19 & 21
194-200	CHANNEL RELOCATION
201-208	CHANNEL IMPROVEMENT SECTIONS

STATE OF VERMONT
DEPARTMENT OF HIGHWAYS
PROPOSED IMPROVEMENT

FEDERAL AID PROJECT
TOWN OF CHESTER
COUNTY OF WINDSOR
VERMONT ROUTE 103
CHESTER-LUDLOW ROAD



PROJECT NAME & NUMBER TYPE PAVEMENT AREA
CHESTER F 025-1(8) BIT. CONCRETE 20,756 S.Y.

RECORD PLANS

MATERIALS

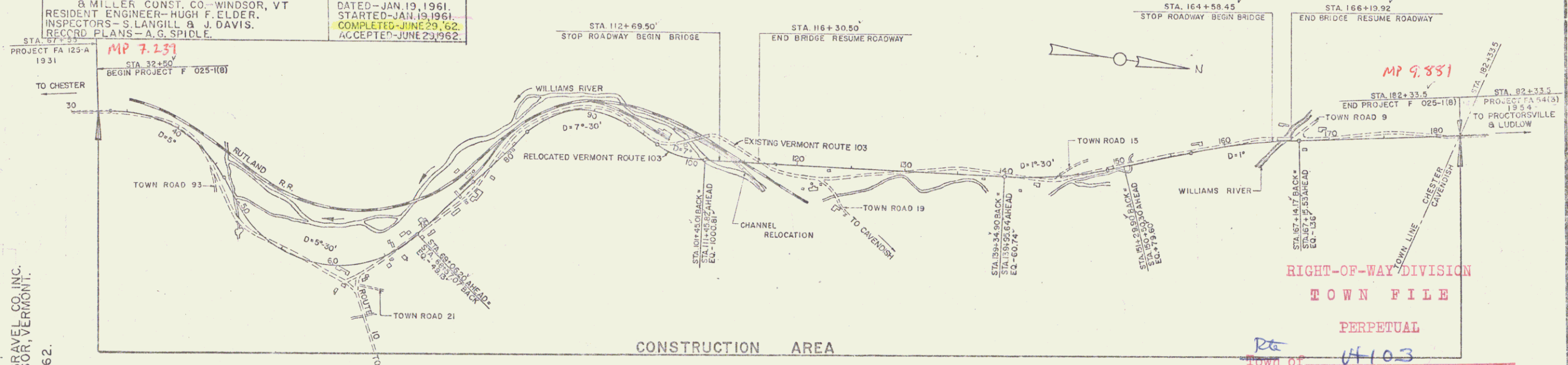
SUBBASE OF GRAVEL - SCHALLOW PIT - PROCTORSVILLE, VT. - SHATTUCK PIT - PERKINSVILLE, VT.
CRUSHED STONE BASE COURSE - VERMONT MARBLE CO. - FLORENCE, VT.
ASPHALT & TAR - ALL STATES ASPHALT CO. INC. - SUNDERLAND, MASS.
BITUMINOUS CONCRETE PAVE. - L.M. PIKE & SON - PLANTFARM, CHESTER, VT.
CONCRETE CLASS 5 - CHARLESTOWN READY MIX INC. - CHARLESTOWN, N.H.
REINFORCING & STRUCTURAL STEEL - CITY IRON WORKS - BRIDGEPORT, CONN.
REINFORCED CONCRETE PIPE - AMERICAN MARIETTA CO. - WINDSOR, VT.
ASPH. COATED CORR. GALV. METAL PIPE & METAL BIN RETAINING WALL - NEW ENGLAND METAL CULVERT CO. - WESTMINSTER, VT.
GUARD RAIL (CABLE & WOOD) - MAINLINE FENCE CO. - WESTBROOK, MAINE.
BRIDGE RAILING - VERMONT STRUCTURAL STEEL CO. - BURLINGTON, VT.
GRANITE SLOPE EDGING - ROCK OF AGES CORP. - BARRE, VERMONT.
CONTRACTORS - CALEDONIA SAND & GRAVEL CO. INC. CONTRACT
& MILLER CONST. CO. - WINDSOR, VT. DATED - JAN. 19, 1961.
RESIDENT ENGINEER - HUGH F. ELDER. STARTED - JAN. 19, 1961.
INSPECTORS - S. LANGILL & J. DAVIS. COMPLETED - JUNE 29, 1962.
RECORD PLANS - A.G. SPIDLE. ACCEPTED - JUNE 29, 1962.

BEGINNING AT A POINT APPROXIMATELY 0.25 MILES SOUTH OF THE INTERSECTION OF VERMONT ROUTES 10 & 103 AND EXTENDING NORTHWESTERLY TO THE CAVDENISH CHESTER TOWN LINE.

LENGTH OF ROADWAY 13,428.59 FT. = 2.543 MILES
LENGTH OF BRIDGE 522.47 FT. = .099 MILES
LENGTH OF PROJECT 13,951.06 FT. = 2.642 MILES

DESIGN DESIGNATION

ADT (1950)	2230
ADT (1960)	3900
DIV (1960)	520
D	55%
T	5%
V	50 MPH



ROW L
COUNTY I
TOWN LB
FENCE LB
STONE W
UNFENCE
GUARD R
TRAVEL
RAILROAD
RETAINM
CENTER
SURVEY I
CULVERT
DROPPIN
TROLLEY
POWER I
TELEPHONE

PROJECT CHESTER
ROUTE F 025-1(8)
STATE BITUMINOUS CONCRETE PAVEMENT

CONTRACTORS - CALEDONIA SAND & GRAVEL CO. INC. & MILLER CONST. CO. - WINDSOR, VT. (EX. 164-62)
LOCATION: Beginning of Right approximately 0.25 miles south of the intersection of Vermont Routes 10 & 103 and extending northwesterly to the Cavanaugh-Chester Town Line.

CHESTER RECORD PLANS - A.G. SPIDLE
CONST. COMPLETED - JUNE 29, 1962.

GROUND ELEVATION DATUM LINE
GRADE ELEVATION DATUM LINE

CURVE DATA

DEFLECTION OF ANGLE	A
DEGREE OF CURVE	D
RADIUS OF CURVE	R
TANGENT DISTANCE	T
LENGTH OF CURVE	L
EXTERNAL DISTANCE	E
POINT OF INTERSECTION	PI
POINT OF CURVE	PC
POINT OF TANGENT	PT
POINT ON TANGENT	POT
POINT ON SUB-TANGENT	POST

SCALES

TITLE	1" = 500'
TYPICAL	3/16" = 1' & 1/8" = 1'
PLAN	1" = 50'
PROFILE HORIZONTAL	1" = 50'
VERTICAL	1" = 10'
GROSS SECTIONS	1" = 5' & 1" = 10'

APPROVED SECONDARY ENGINEER: [Signature] DATE: 5/3/60
APPROVED [Signature] DATE: Aug 2, 1960
APPROVED [Signature] DATE: 7/26/60
APPROVED [Signature] DATE: 7/24/60
APPROVED [Signature] DATE: [Signature]

THESE PLANS ARE SUBJECT TO SUCH REVISIONS AS MAY BE REQUIRED BY THE BUREAU OF PUBLIC ROADS OR THE COMMISSIONER OF HIGHWAYS.

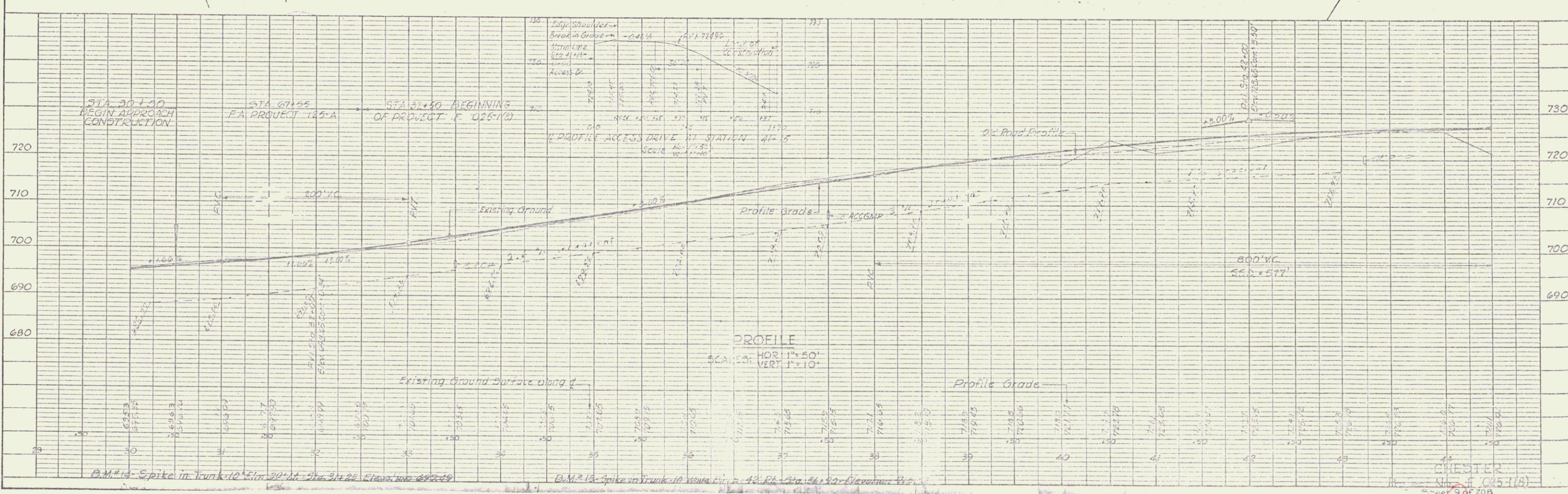
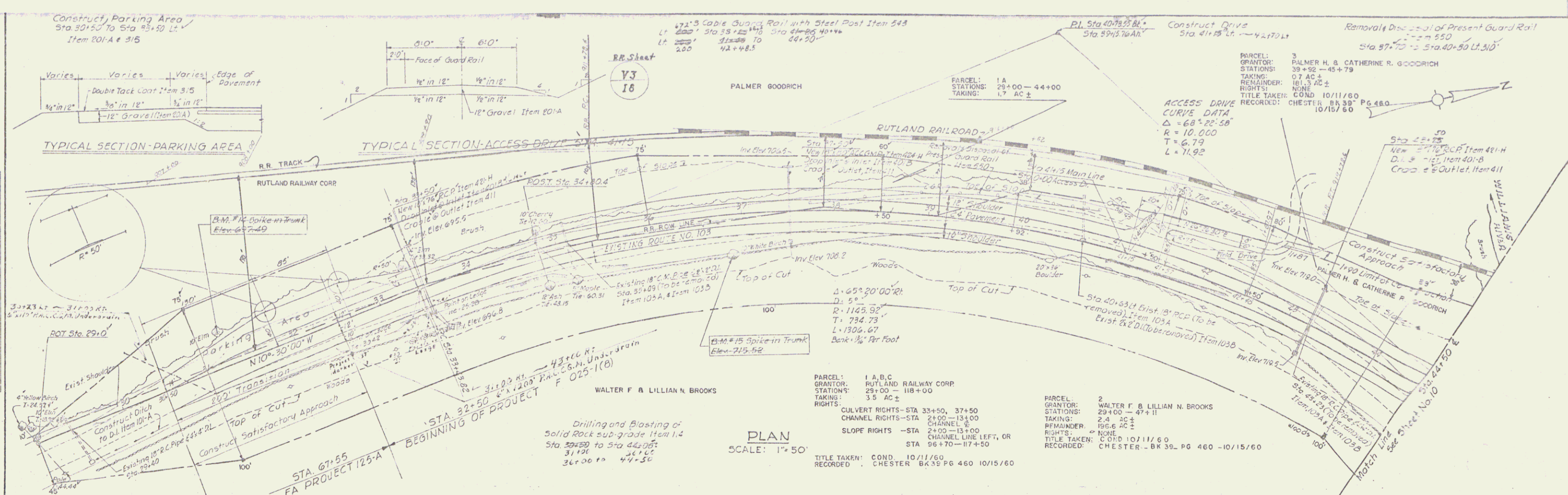
CONSTRUCTION IS TO BE CARRIED ON IN ACCORDANCE WITH THE PLANS AND THE STANDARD SPECIFICATIONS FOR HIGHWAY AND BRIDGE CONSTRUCTION OF JANUARY 1956 SUBMITTED TO THE BUREAU OF PUBLIC ROADS AS APPROVED JULY 3, 1956, INCLUDING ALL SUBSEQUENT APPROVED REVISIONS AND SUCH REVISED SPECIFICATIONS AND SPECIAL PROVISIONS AS ARE SUBMITTED WITH THE PLANS.

DEPARTMENT OF COMMERCE
BUREAU OF PUBLIC ROADS

Pin # 00R132

PROJECT F 025-1(8)

SHEET 1 OF 203 SHEETS



DATE: _____ BY: _____

PLAN

DESIGNED BY: _____

CHECKED BY: _____

DATE: _____

NOTE BOOK: _____

NO. _____

DATE: _____ BY: _____

PROFILE

DESIGNED BY: _____

CHECKED BY: _____

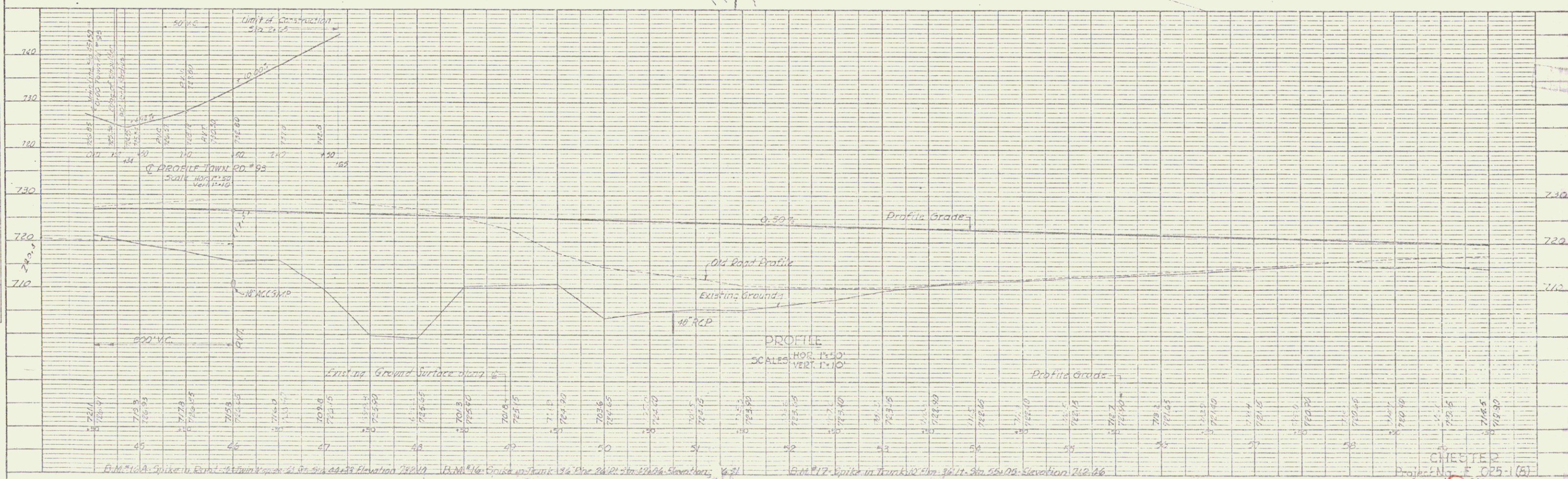
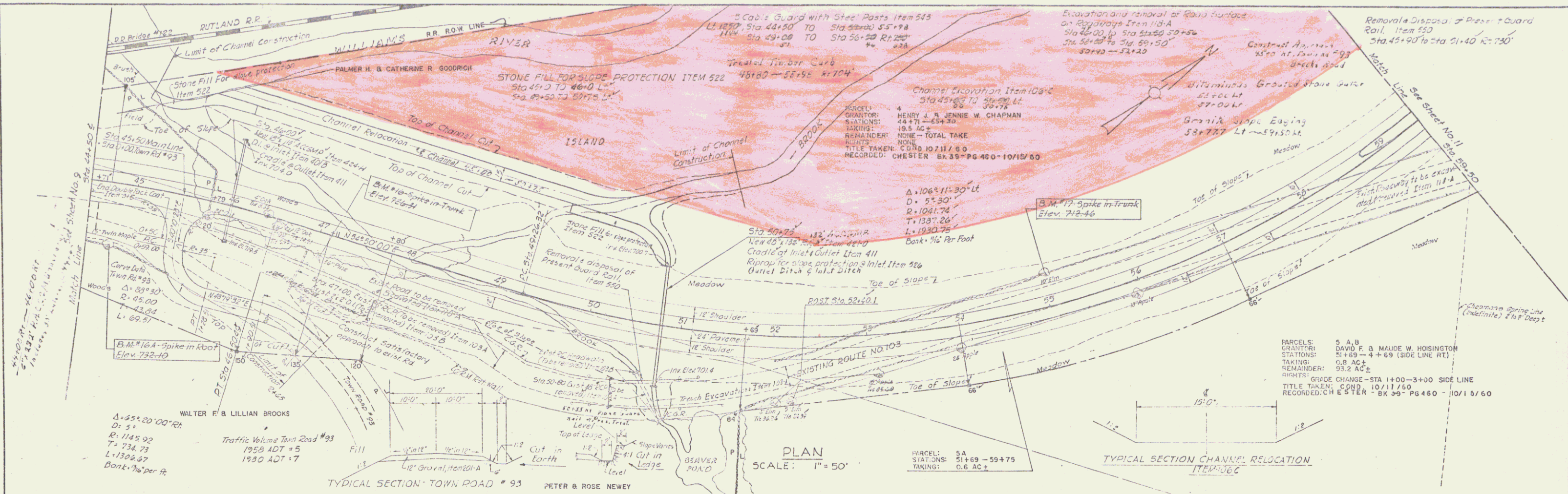
DATE: _____

NOTE BOOK: _____

NO. _____

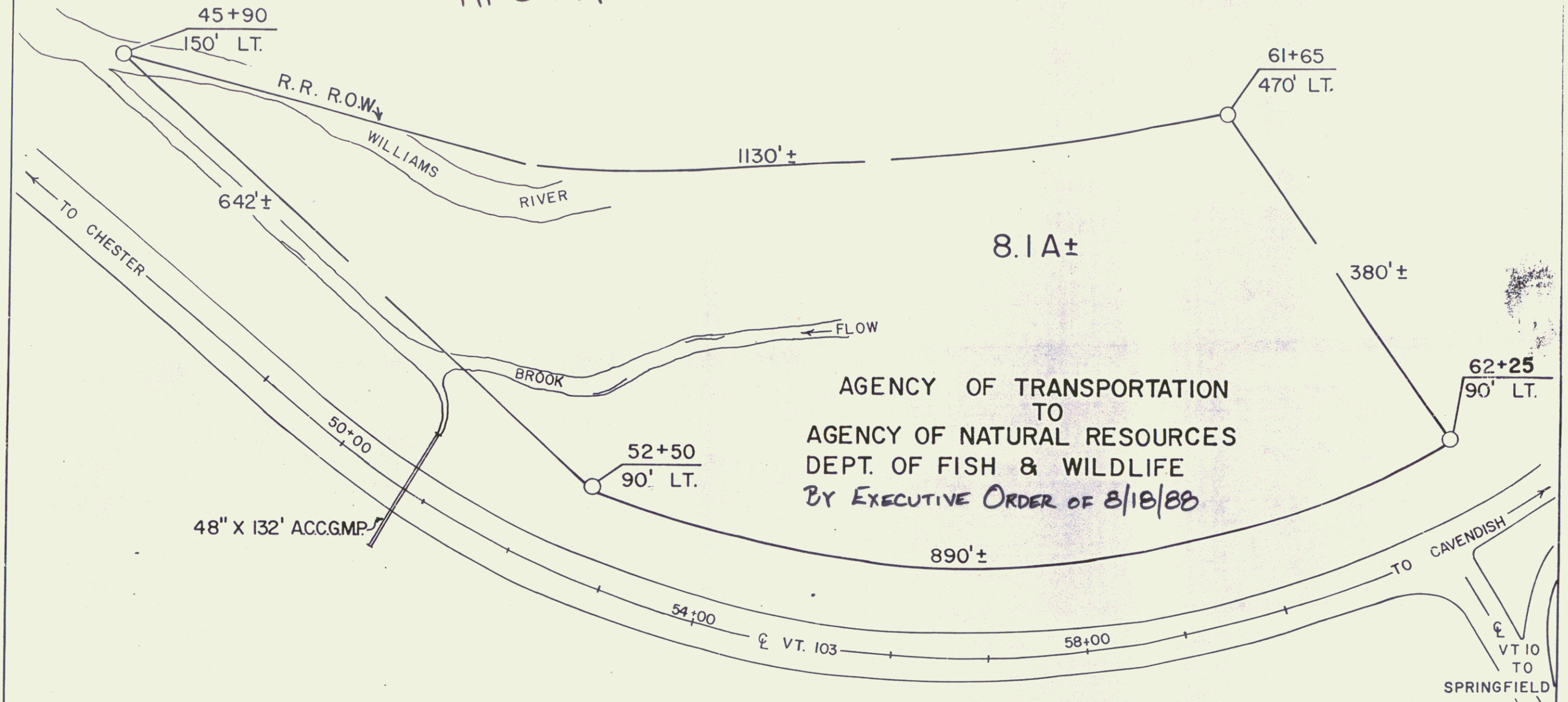
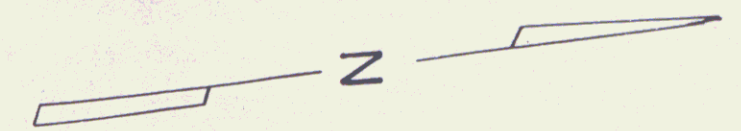
PLAN	DATE
REVISED	
NOTE BOOK	
AS QUARTY CHECKED	
NO.	

PROFILE	DATE
REVISED	
NOTE BOOK	
AS QUARTY CHECKED	
NO.	



BEING A PART OF THE SAME LAND AND PREMISES
ACQUIRED BY THE STATE OF VERMONT FROM HENRY
J. & JENNIE W. CHAMPMAN BY CONDEMNATION ORDER
DATED OCTOBER 11, 1969 AND RECORDED IN BOOK
39, PAGE 460, OF THE TOWN OF CHESTER LAND
RECORDS.

MP 0749

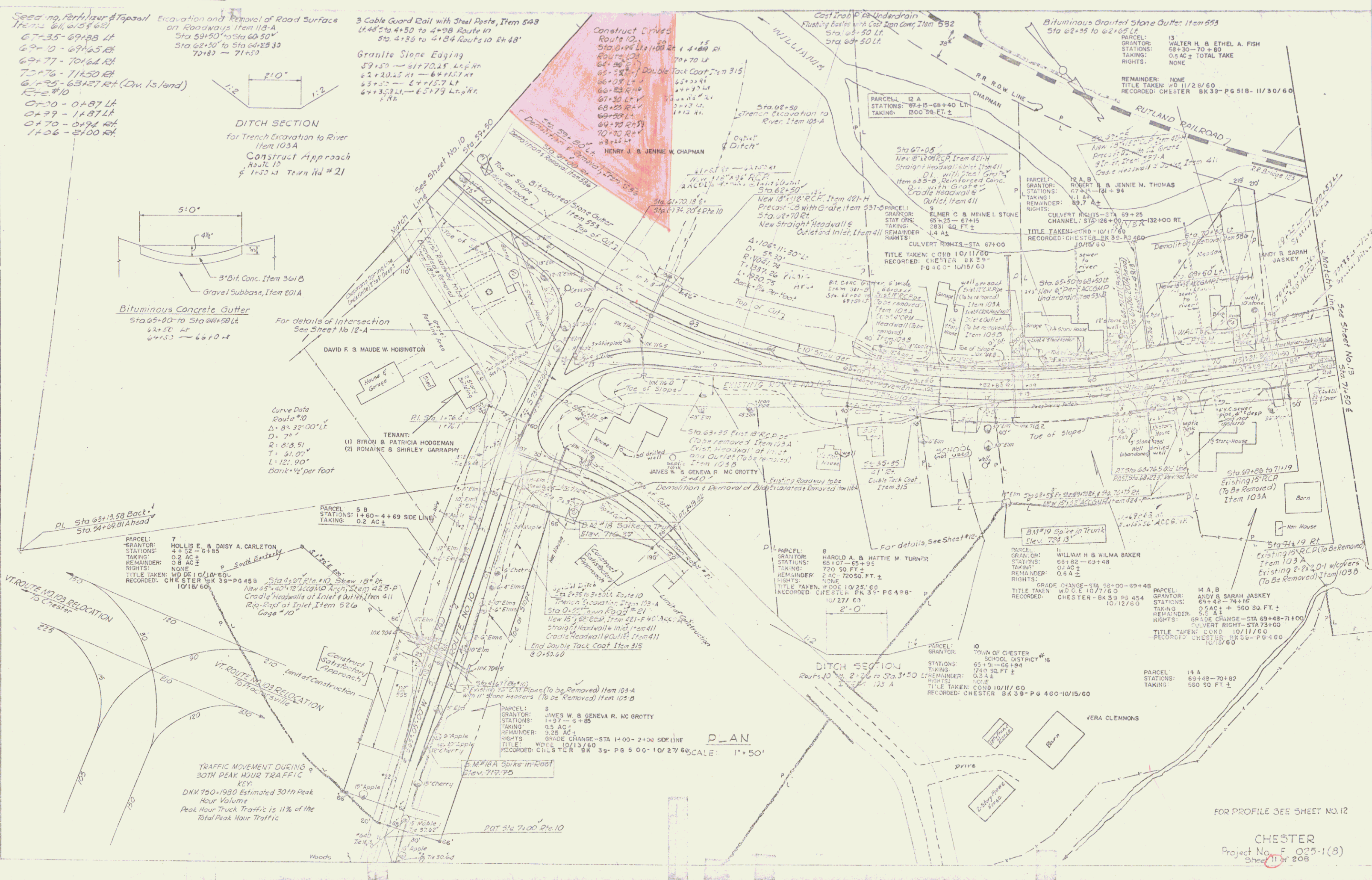


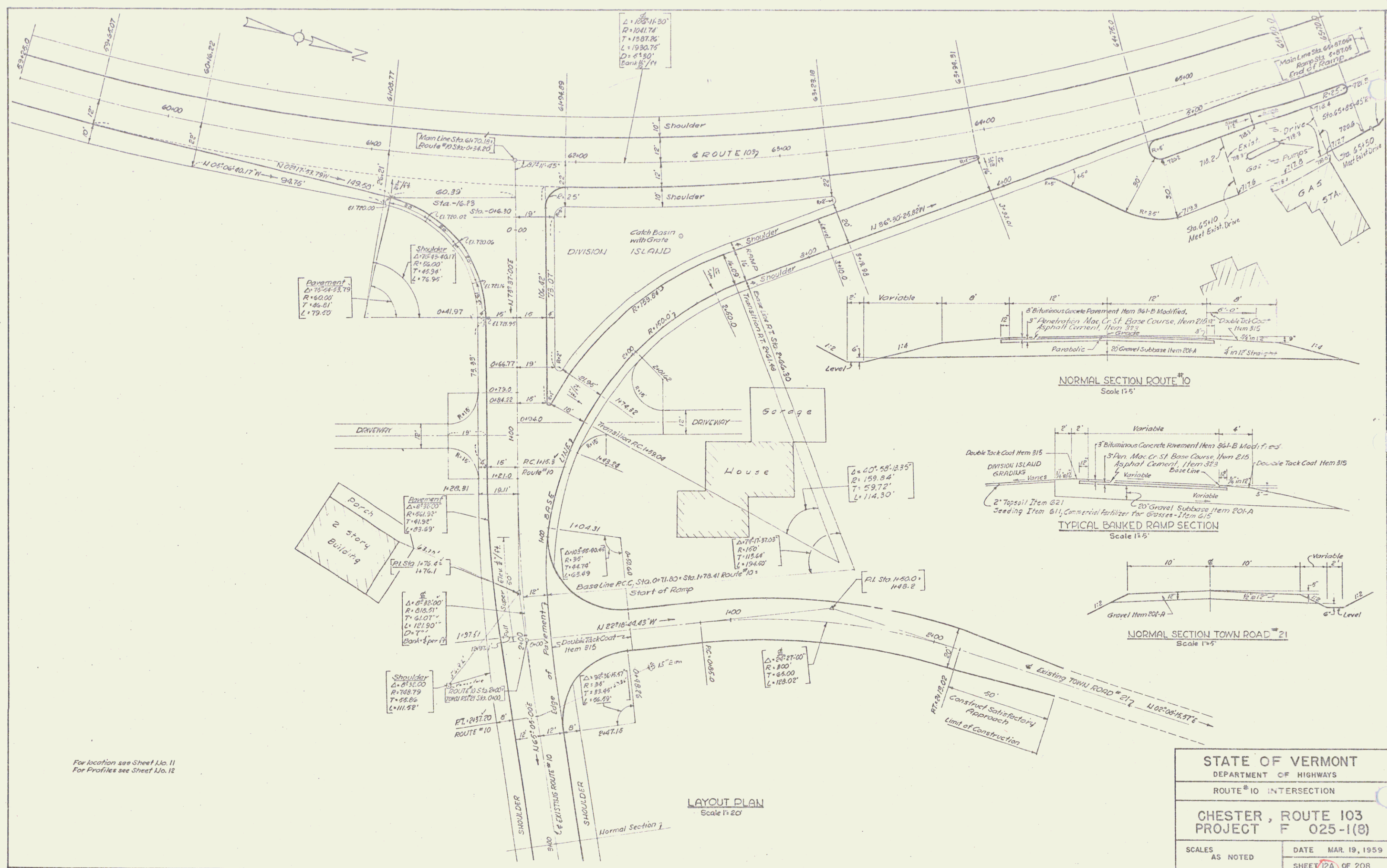
RIGHT-OF-WAY DIVISION
TOWN FILE
PERPETUAL
Town of CHESTER
(To Be Returned To R.O.W. Division)



RF: CHESTER F 025-1(8) Sh. 10 of 208

STATE OF VERMONT	
AGENCY OF TRANSPORTATION	
TOWN OF CHESTER	
SHEET 10A	
4	
APPROX. SCALE 1"=100'	DATE: 1-25-88
DRAWN BY: M.R.	





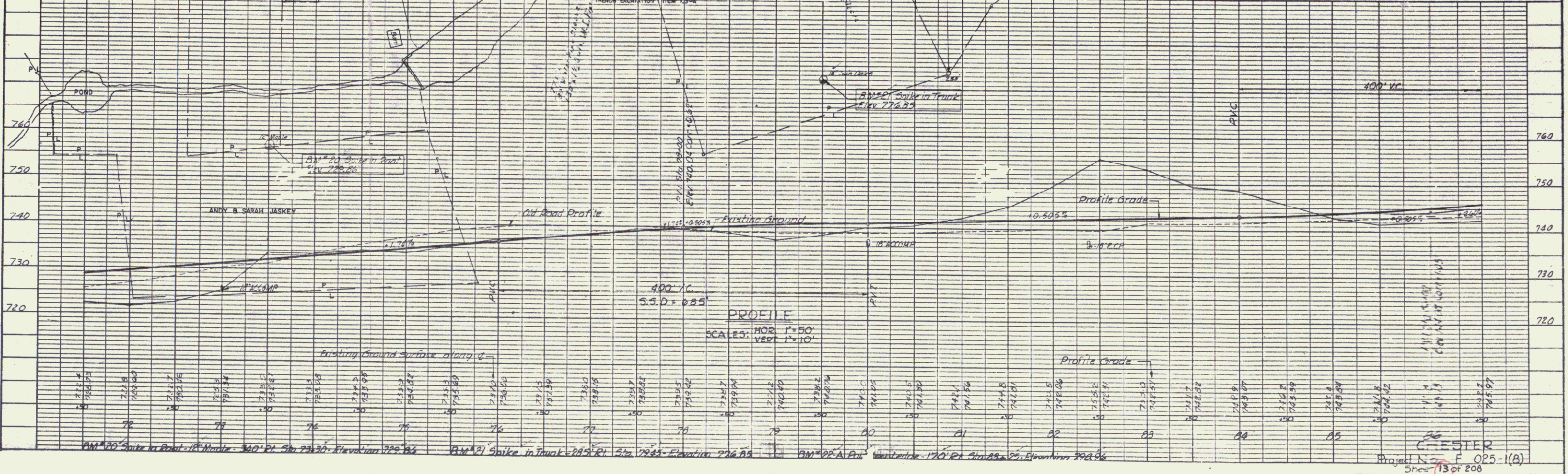
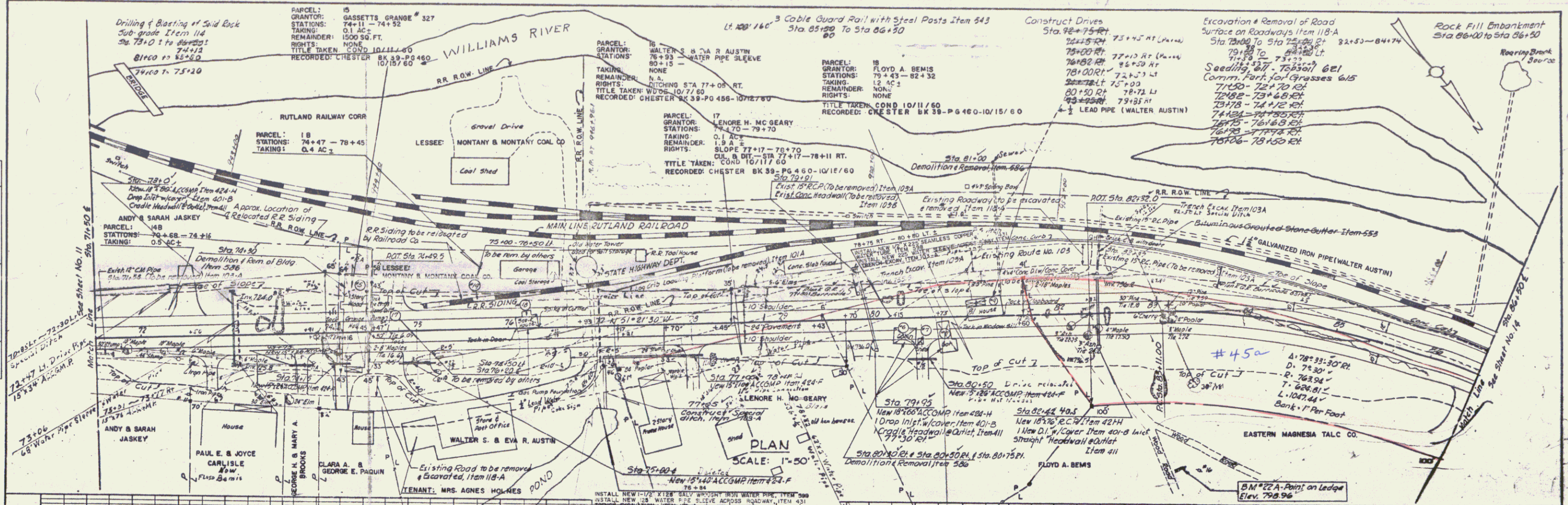
For location see Sheet No. 11
For Profiles see Sheet No. 12

STATE OF VERMONT	
DEPARTMENT OF HIGHWAYS	
ROUTE 10 INTERSECTION	
CHESTER, ROUTE 103	
PROJECT F 025-1(8)	
SCALES AS NOTED	DATE MAR. 19, 1959
	SHEET 12A OF 208

6

DATE: _____ BY: _____
 PLAN
 SURVEYED: _____
 CHECKED: _____
 DATE: _____
 BY: _____
 NO. _____

DATE: _____ BY: _____
 PROFILE
 SURVEYED: _____
 CHECKED: _____
 DATE: _____
 BY: _____
 NO. _____

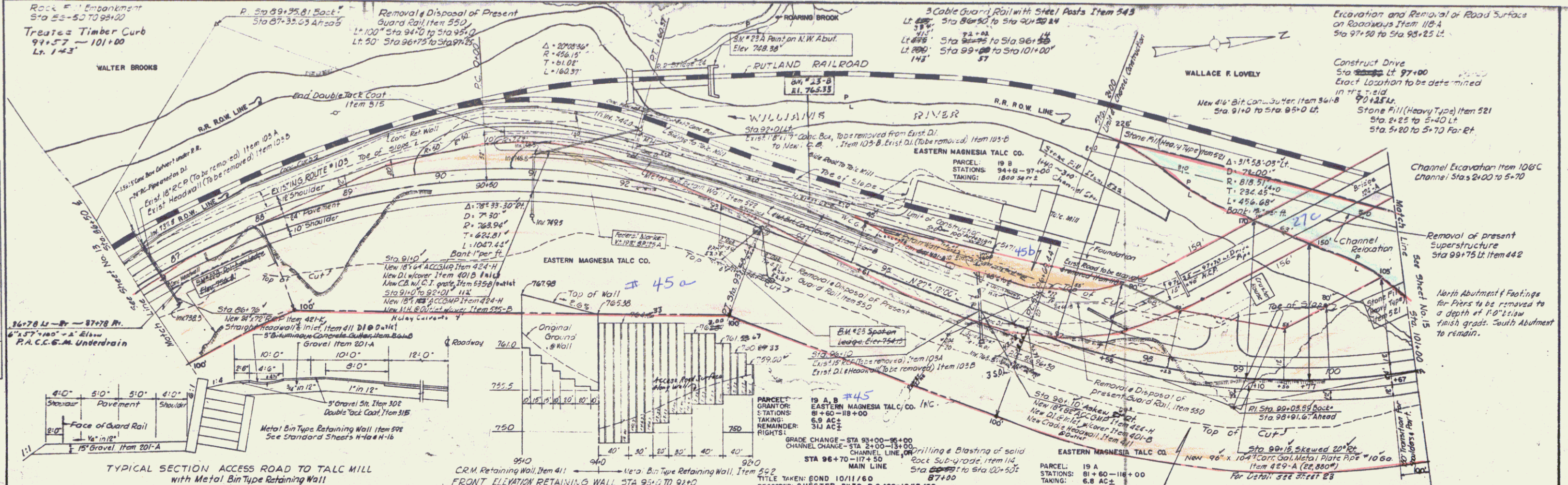


Project No. F 025-1(A)
 Sheet 13 of 208

7

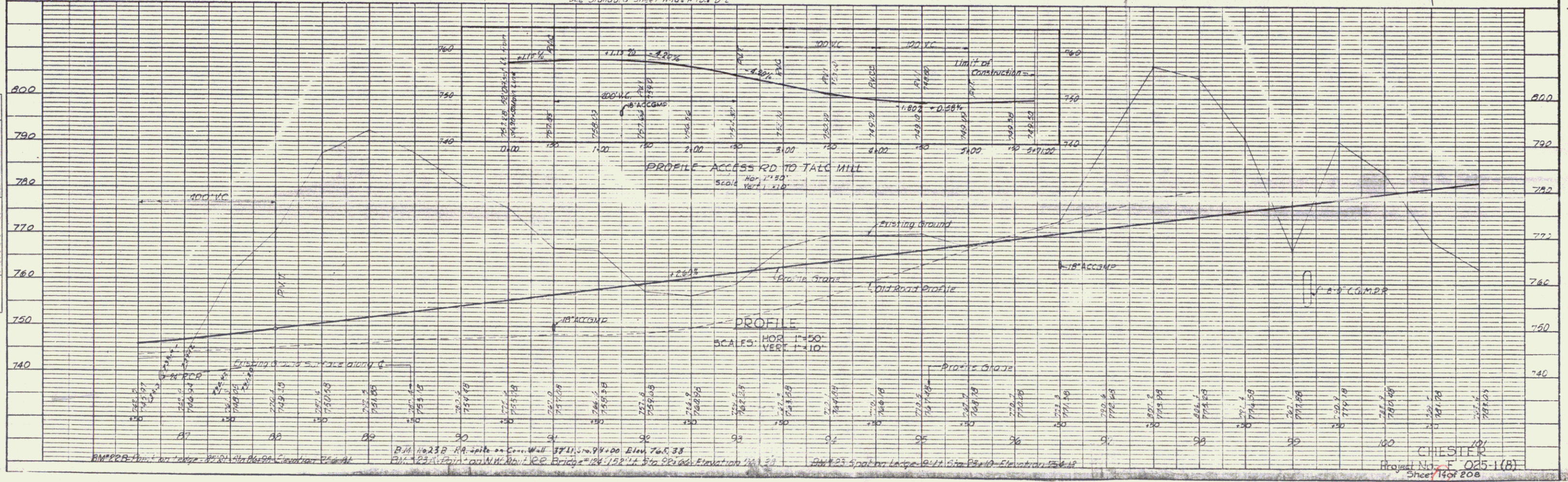
DATE	
BY	
PROJECT	
NO. SHEETS	
NO. SHEETS CHECKED	
NO. SHEETS REVISIONS	
NO. SHEETS REVISIONS	

DATE	
BY	
PROJECT	
NO. SHEETS	
NO. SHEETS CHECKED	
NO. SHEETS REVISIONS	
NO. SHEETS REVISIONS	



TYPICAL SECTION ACCESS ROAD TO TALC MILL with Metal Bin Type Retaining Wall

FRONT ELEVATION RETAINING WALL STA 95+0 TO 92+0 See Standard Sheet H-14-1-D-2



Rock Fill Embankment
Sta. 101+00 to Sta. 113+90 ±
Sta. 113+50 to Sta. 118+00 ±

Channel Excavation, Item 106c
Channel Sta. 5+70 to 13+00

Excavation and Removal of Road Surface
on Roadways Item 118-A
Sta. 111+50 to Sta. 115+50

Removal & Disposal of Present
Guard Rail, Item 550
U. 430' Sta. 111+50 to Sta. 115+50

Construct Drives
116+75' Lt.
122+00 Lt.
Town Road #19
5+25 Rt.
6+65 Arise Cattle Ramp

3 Cable Guard Rail with Steel Posts Item 545
Lt. 128' Sta. 101+00 to Sta. 112+23
10+00' to 117+80' Rt. 106' 13 1/2'
Lt. 206' 9' 116+14 to 117+00
116+75 to 126+00 Rt. 92K's

Sodded Gutter, Item 612
Sta. 124+00 to Sta. 126+00 EA.

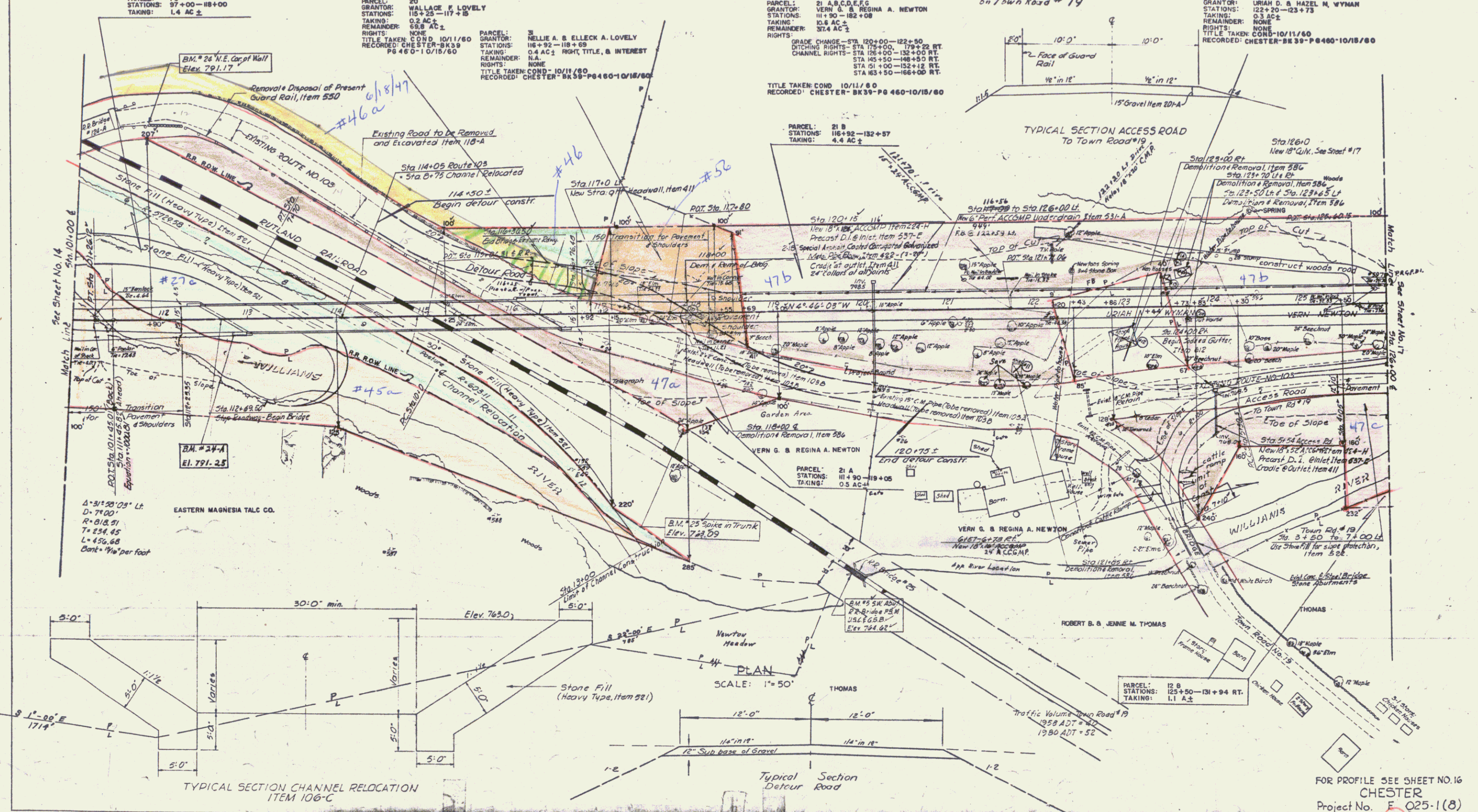
Cast Iron Pipe Underdrain
Flushing Basin with Cast Iron Cover, Item 532
Sta. 123+50 Lt.

Treated Timber Curb
101+00 — 112+23
Lt. 122'

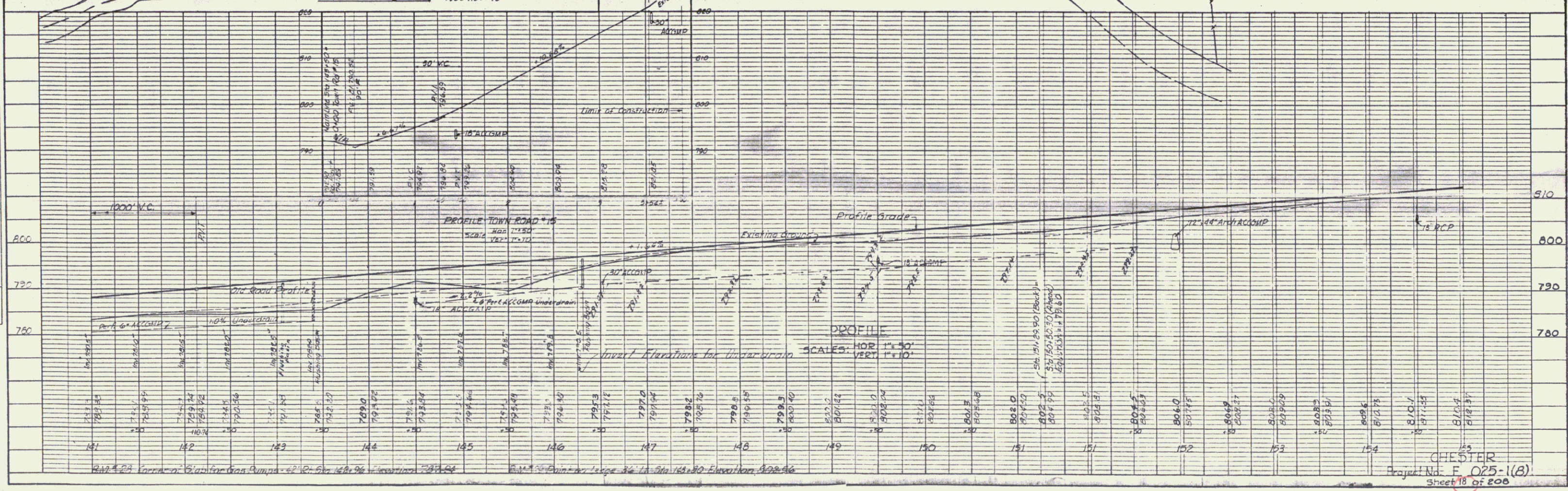
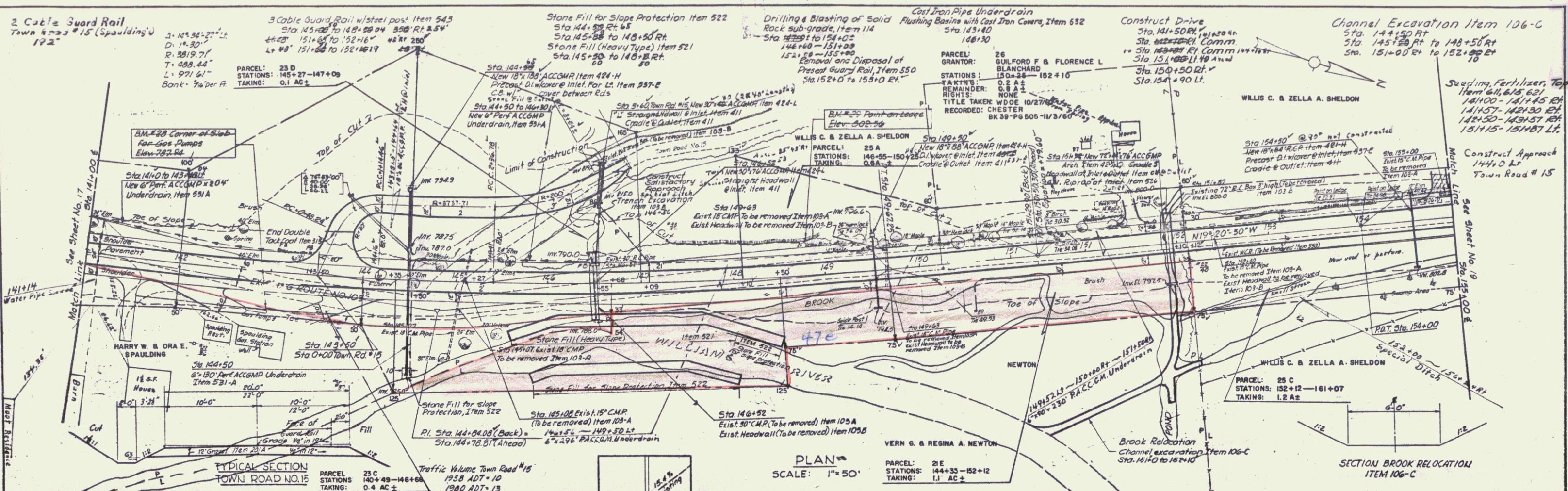
Stone Fill (Heavy Type) Item 521
Sta. 5+40 to 12+50 Lt.
5+70 to 9+15 For Rt.

Construct Woods Road
Sta. 121+75 Lt. — 125+80 Lt.

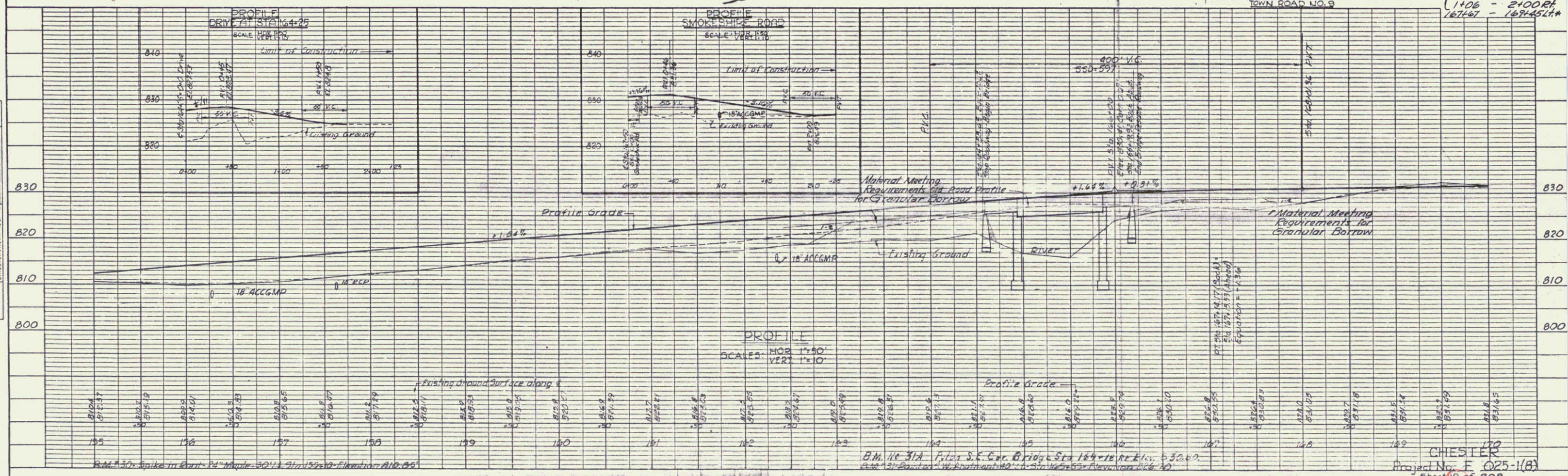
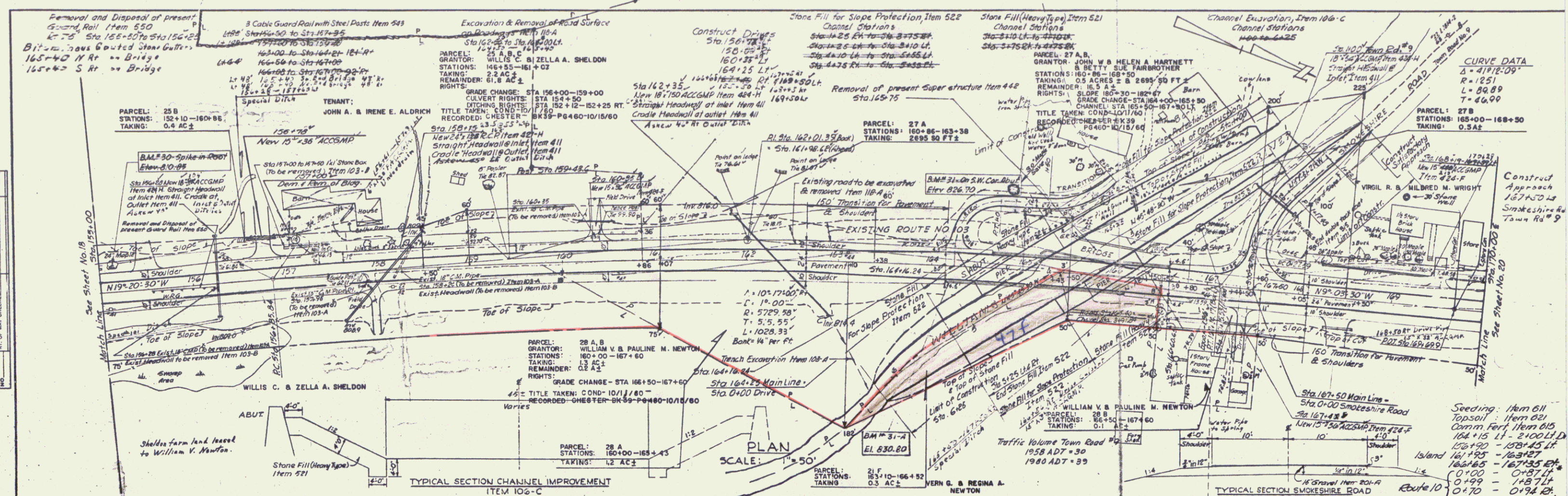
Resetting 2 Cable Guard Rail
on Town Road #19



FOR PROFILE SEE SHEET NO. 16
CHESTER
Project No. E-025-1(8)
Sheet 15 of 208



DATE	
BY	
APPROVED	
ALTERNATE CHECKED	
NOTE BOOK	
NO.	
STRUCTURE	
DATE	
BY	
APPROVED	
ALTERNATE CHECKED	
NOTE BOOK	
NO.	
STRUCTURE	
DATE	
BY	
APPROVED	
ALTERNATE CHECKED	
NOTE BOOK	
NO.	
STRUCTURE	



CHIESTER
Project No. F 025-1(B)
Sheet 19 of 208

