

**WOOD GUARD RAIL REQUIRED**

CUV. STA.	Left	Right
149158	24'	-
153159	24'	28'
162125	24'	28'

**CABLE GUARD RAIL REQUIRED**

Sta.	Length	Constant	Qty	Length
147100-147170 Kl. 71'	70'	95'	20	95'
149146-150100 Kl. 152'	40'	192'	15	40'
153100-156120 Kl. 124'	40'	160'	15	40'

**NEW REIN. CONC. PIPE CULVERTS REQUIRED**

Sta.	Diam.	Length	Conc. K.	Conc. C.	Steel
149158	28"	40'	2.4 cy.	54"	54"
153159	15"	40'	1.8	1.2	178"
162125	24"	40'	2.4	-	34"

**NEW REIN. CONC. BOX CULV. REQUIRED**

Sta.	Size	Conc. K.	Steel
149158	24"	400 Y.	308"

**NEW REIN. CONC. DRIVEWAY PIPES REQUIRED**

Sta.	Diam.	Length	Cement	Gravel	Area
14100 Lt.	15"	20'	2.4 cy.	150130 Kl.	3.99 yds.
148110 Lt.	15"	20'	2.4	-	-

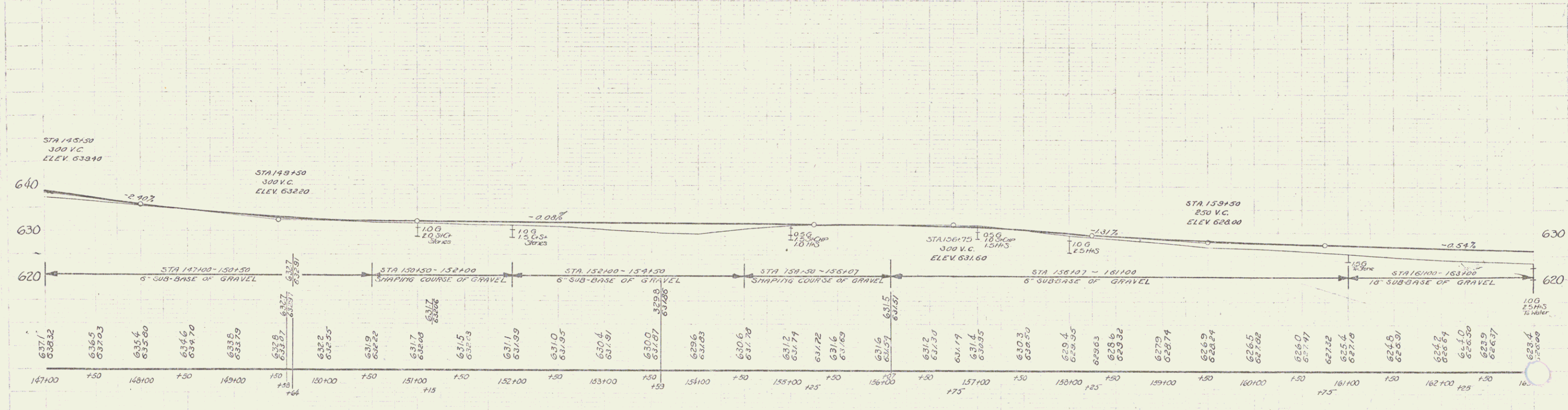
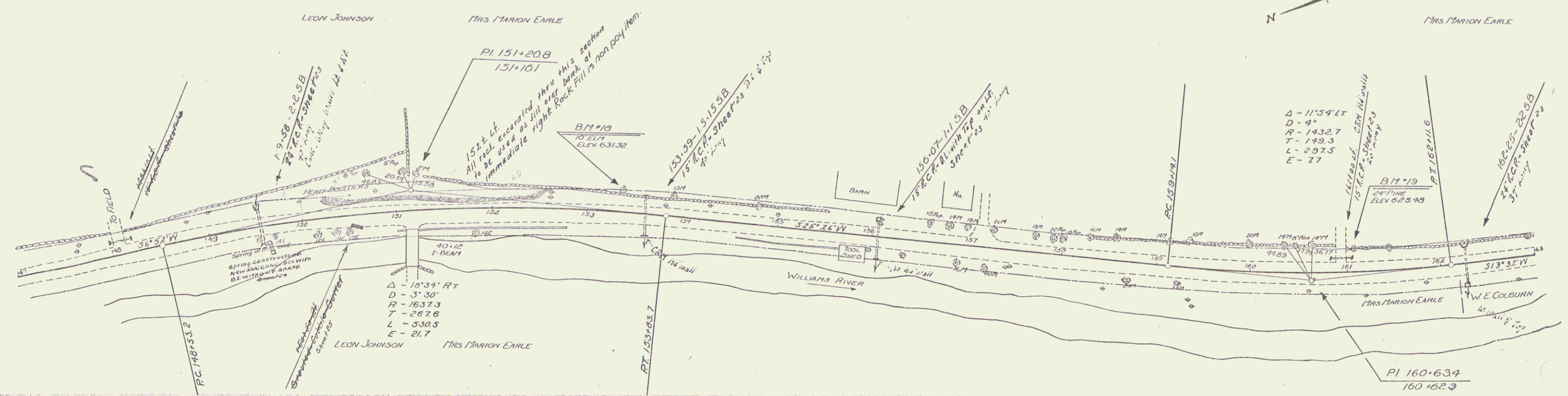
**GROUTED COBBLE GUTTER REQUIRED**

Width	Area
3'-0"	3.99 yds.

**WOOD GUARD POSTS REQUIRED**

CUV. STA.	Left	Right
156107	1	-

STATE OF MISSISSIPPI  
 DIVISION OF HIGHWAYS  
 PROJECT NO. 125-A  
 SHEET 15 OF 54



B.M. 170.18 10" Elm 21.5' Lt. STA 153+35 Elev 631.32  
 B.M. 170.19 24" Pine 25' Lt. STA 161+07 Elev 625.98

SERIES F NO 125-A  
 Sheet 15 of 54