

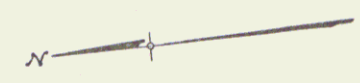
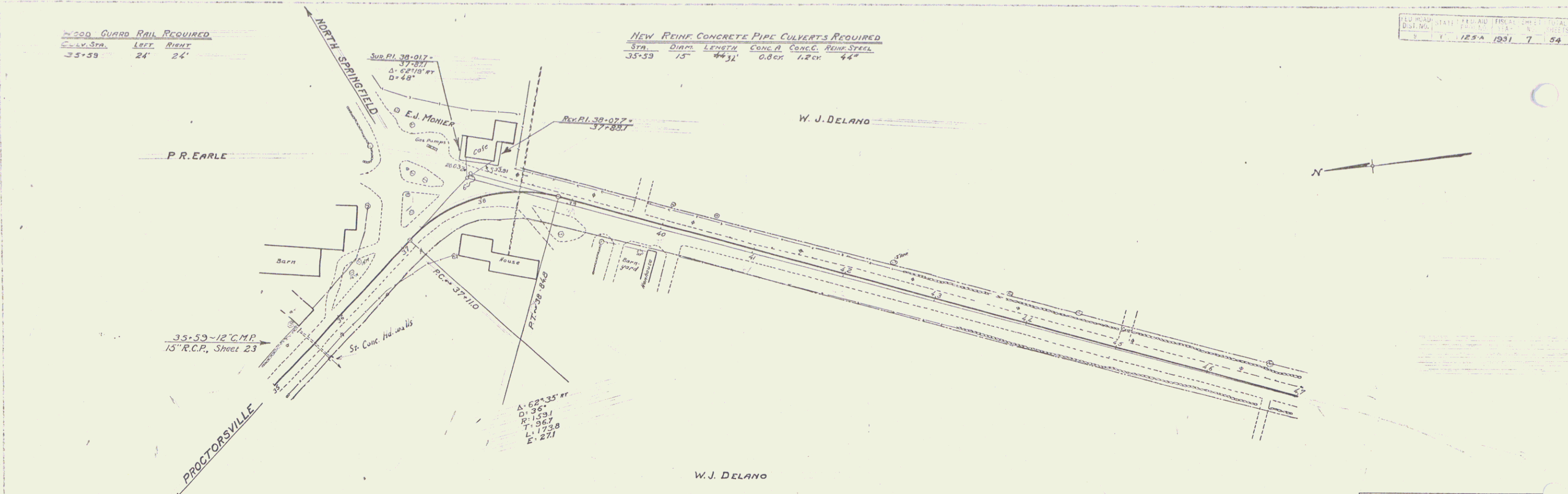
WOOD GUARD RAIL REQUIRED

CULV. STA.	LEFT	RIGHT
35+59	24'	24'

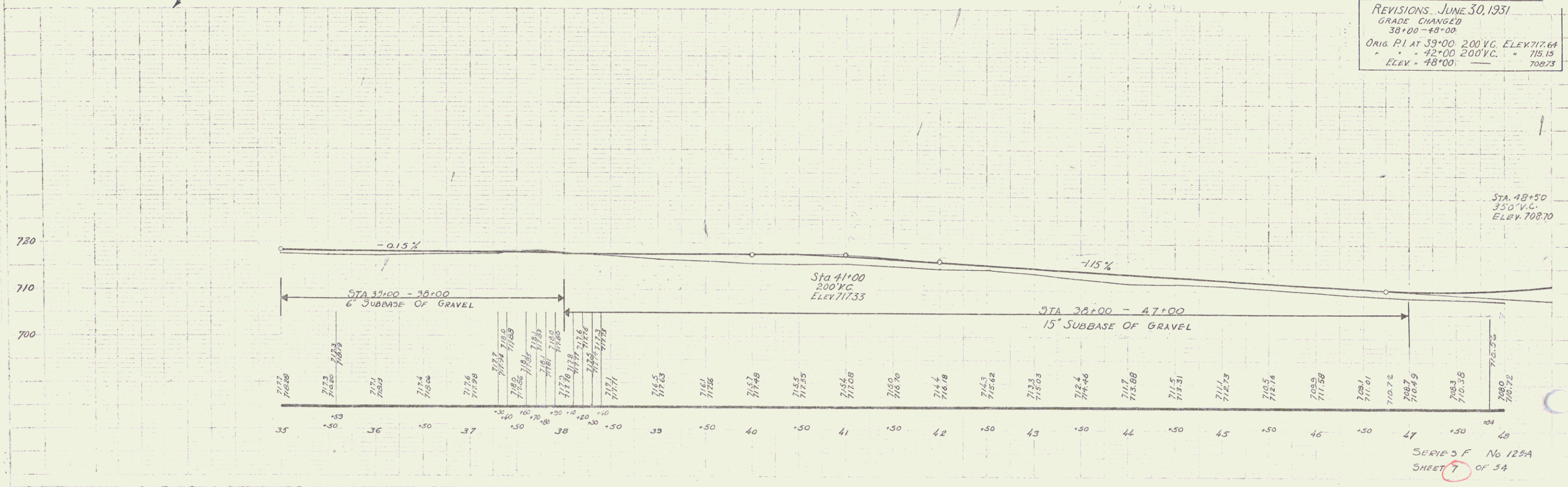
NEW REINF. CONCRETE PIPE CULVERTS REQUIRED

STA.	DIAM.	LENGTH	CONC. A	CONC. B	REINF. STEEL
35+59	15"	44'	0.8 cr	1.2 cr	44"

LOG BOOK STATE HIGHWAY DISTRICT SHEET TOTAL  
 DIST. NO. 125A 1931 7 54



REVISIONS - JUNE 30, 1931  
 GRADE CHANGED  
 38+00 - 48+00  
 ORIG. PI AT 39+00 200' V.C. ELEV. 717.64  
 " " 42+00 200' V.C. " 715.15  
 ELEV. 48+00 " 708.73



SERIES F No 125A  
 SHEET 7 OF 54

5