

INDEX OF SHEETS

SHEET NO.	TITLE PAGE
2	TYPICAL CROSS-SECTION OF IMPROVEMENT
3	PLAN AND PROFILE STA. 0+00 TO STA. 14+00
4	14+00 - 30+00
5	30+00 - 45+00
6	45+00 - 61+00
7	61+00 - 77+00
8	77+00 - 92+00
9	92+00 - 106+00
10	106+00 - 121+00
11-22	CROSS SECTIONS

STATE OF VERMONT
STATE HIGHWAY DEPARTMENT

PLAN AND PROFILE OF PROPOSED
STATE HIGHWAY
FEDERAL AID PROJECT

TOWN OF CLARENDON
BOSTON ROAD
FROM SHIREWSBURY LINE TO
400 FT. N. OF THE THOMAS PIERCE HOUSE

FED. ROAD DIST. NO.	STATE	PROJECT NO.	DATE	SCALE
9	Vt.	45	122	1" = 200'

(To Be Returned To R.O.W. Division)
of VT 103
PERPETUAL
ETI...
...



PLAN - 1" = 500 FT.
PROFILE - 1" = 10 FT. (VERTICAL CURVE PORTIONS 1" = 20 FT.)

RECORD PLANS



RIGHT-OF-WAY DIVISION
TOWN FILE
PERPETUAL
pte
Town of VT 103
(To Be Returned To R.O.W. Division)

CONVENTIONAL SIGNS

SYMBOL	DESCRIPTION
---	COUNTY LINE
---	TOWN LINE
---	FENCE LINE
---	STONE WALL
---	UNFENCED PROPERTY
---	GUARD RAIL
---	TRAVELED WAY
---	RAILROAD
---	RETAINING WALL
---	CENTERLINE
---	SURVEY LINE
---	CULVERT
---	BRCP INLET
---	TROLLEY POLE
---	POWER POLE
---	TELEPHONE POLE
---	TREES
---	HERD

- COUNTY LINE
- TOWN LINE
- FENCE LINE
- STONE WALL
- UNFENCED PROPERTY
- GUARD RAIL
- TRAVELED WAY
- RAILROAD
- RETAINING WALL
- CENTERLINE
- SURVEY LINE
- CULVERT
- BRCP INLET
- TROLLEY POLE
- POWER POLE
- TELEPHONE POLE
- TREES
- HERD

CURVE DATA

DEFLECTION ANGLE	Δ
DEGREE OF CURVE <td>D.</td>	D.
RADIUS OF CURVE <td>R.</td>	R.
TANGENT DISTANCE <td>T.</td>	T.
LENGTH OF CURVE <td>L.</td>	L.
EXTERNAL DISTANCE <td>E.</td>	E.
POINT OF INTERSECTION P.I. <td>P.I.</td>	P.I.
POINT OF CURVE <td>P.C.</td>	P.C.
POINT OF TANGENT <td>P.T.</td>	P.T.

LAYOUT - 1" = 500 FT.

Project **F 45**
Pin # **00R128**
Route **VT 103**
Date **1/1/122**

RECOMMENDED BY
APPROVED BY
DATE

1

GUARD RAIL REQUIRED ON LEFT

Sta. 3+38 To Sta. 3+62	Length 24 FT
- 7+88 - - 8+12	- 24 -
- 12+44 - - 13+48	- 10 4 -

ON RIGHT

Sta. 3+38 To Sta. 3+62	Length 24 FT
- 7+88 - - 8+12	- 24 -
- 12+88 - - 13+12	- 24 -

TOTAL THIS SHEET 124 FT

NEW CULVERTS REQUIRED

Sta. 12+85	14" Cor Iron Pipe Length 28 FT
Sta. 13+00	14" Cor Iron Pipe Length 28'
Sta. 6+00	18" Cor Iron Pipe Length 28'

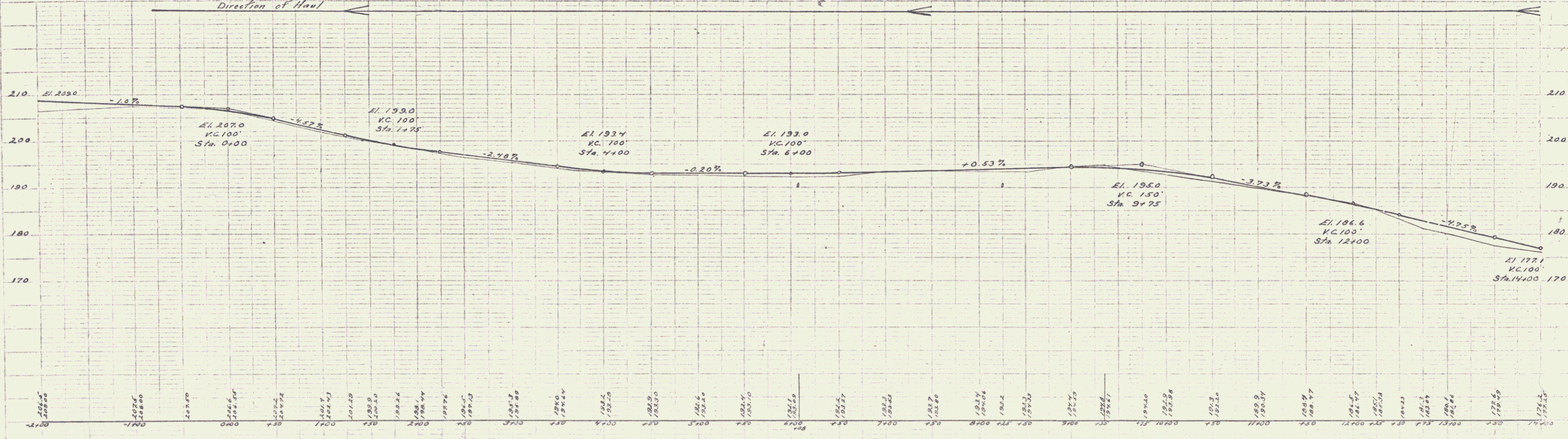
RELAYING PIPE CULVERTS

Sta. 3+50	12" Cor Iron Pipe Length 26 FT
Sta. 8+00	12" Cor Iron Pipe Length 28 FT
Sta. 11+95	12" Cor Iron Pipe Length 16'

SUB. BASE REQUIRED

Sta. 11+00 To Sta. 12+75	Length 175 FT
--------------------------	---------------

FED. AID	STATE	FED. AID / STATE	TOTAL
9	VT	43	22
			3
			22



R. L. Pomeroy
S. S. Hartman

S. S. Hartman
R. L. Pomeroy

B.M. No. 1 Spike in 14" Maple Sta. 1+80 Elev. 200.00
B.M. No. 2 Spike in 14" Maple Sta. 8+32 Elev. 192.27

Sheet 2 of 22
Series P No. 45 Filed

GUARD RAIL REQUIRED ON LEFT

Sta. 17125 to Sta. 22163 Length 498 FT
 - 24x48 - - 25x10 - 24 -
 - 26x30 - - 27x22 - 24 -
ON RIGHT

Sta. 17103 to Sta. 18107 Length 244 FT
 - 22x38 - - 22x62 - 24 -
 - 25x22 - - 25x46 - 24 -
 - 26x30 - - 27x14 - 24 -
TOTAL THIS SHEET 632 FT

NEW CULVERTS REQUIRED

Sta. 17195 2x2 Concrete Box
 1-2-4 Concrete 6.3 cu yd.
 1-2-5 Concrete 8.2 cu yd.
 Sta. 22150 18" Cur. Iron Pipe Length 24 FT
 1-2-5 Concrete 1.5 cu yd.
 Sta. 24125 18" Cur. Iron Pipe Length 80 FT
 1-2-5 Concrete 1.7 cu yd.
 Sta. 29000 18" Cur. Iron Pipe Length 30 FT
 1-2-5 Concrete 4.0 cu yd.

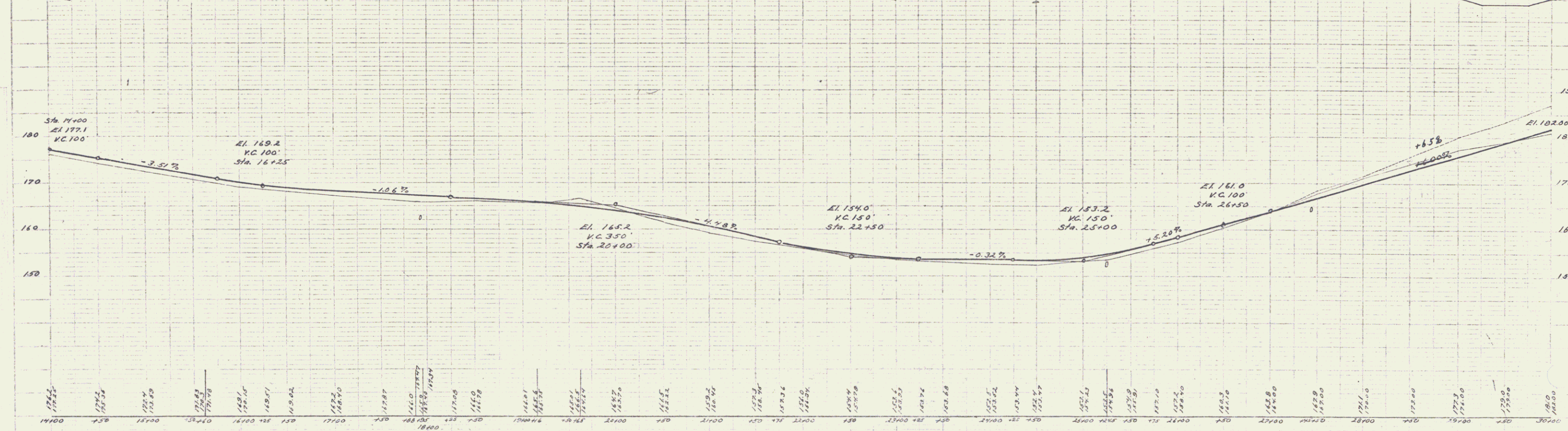
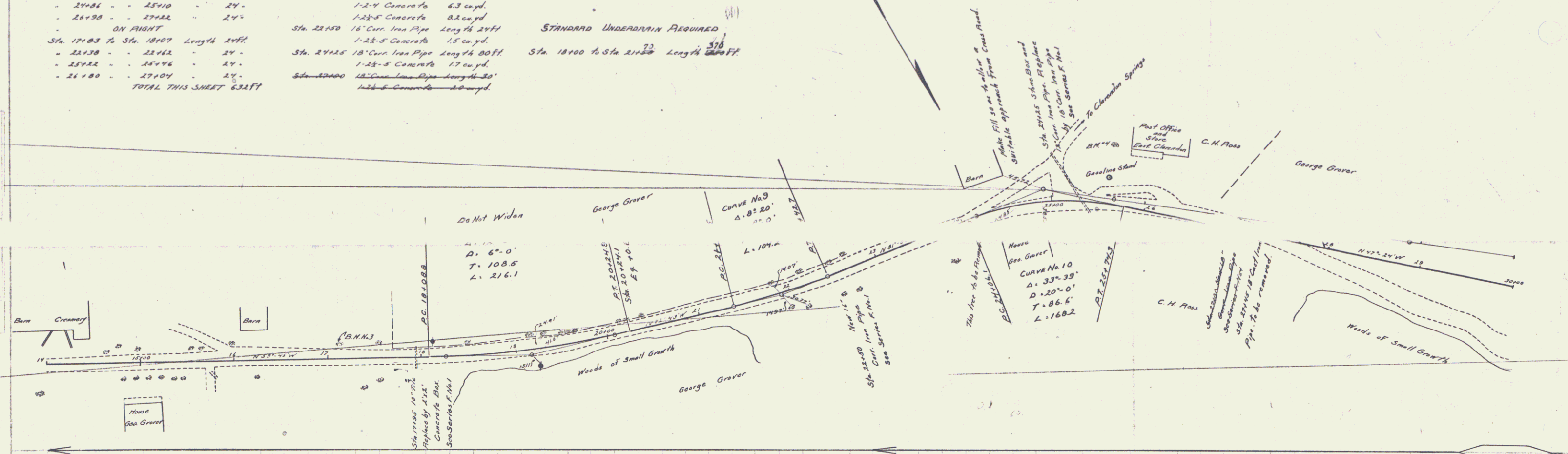
SUB-DRAIN REQUIRED

Sta. 18100 to Sta. 21150 Length 350 FT

STANDARD UNDERDRAIN REQUIRED

Sta. 18100 to Sta. 21150 Length 350 FT

FED. ROAD DIST. NO.	STATE	FED. AID FISCAL YEAR	SHEET NO.	TOTAL SHEETS
8	VT	95	22	4



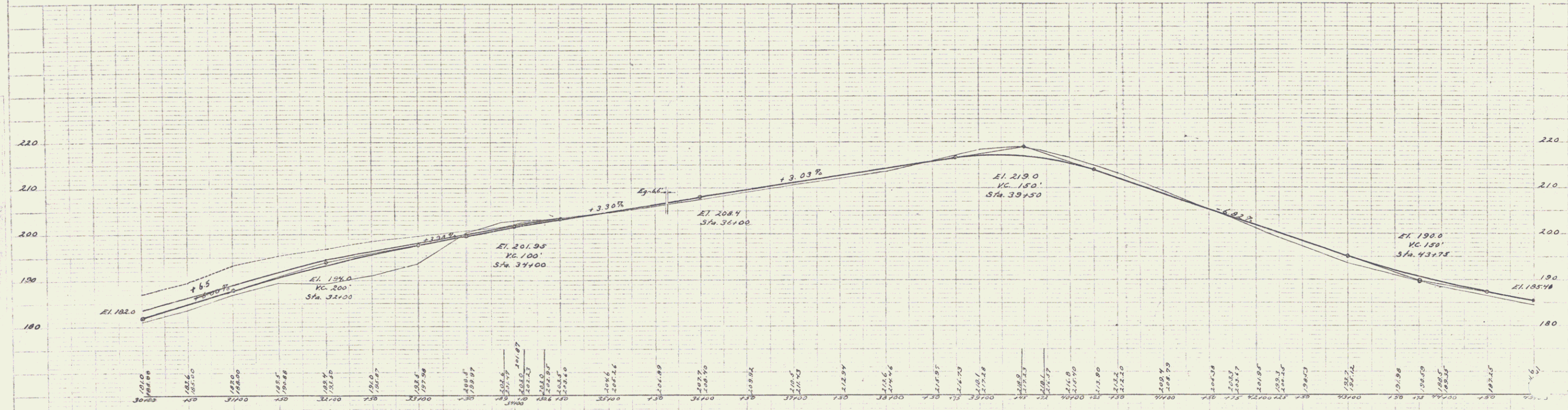
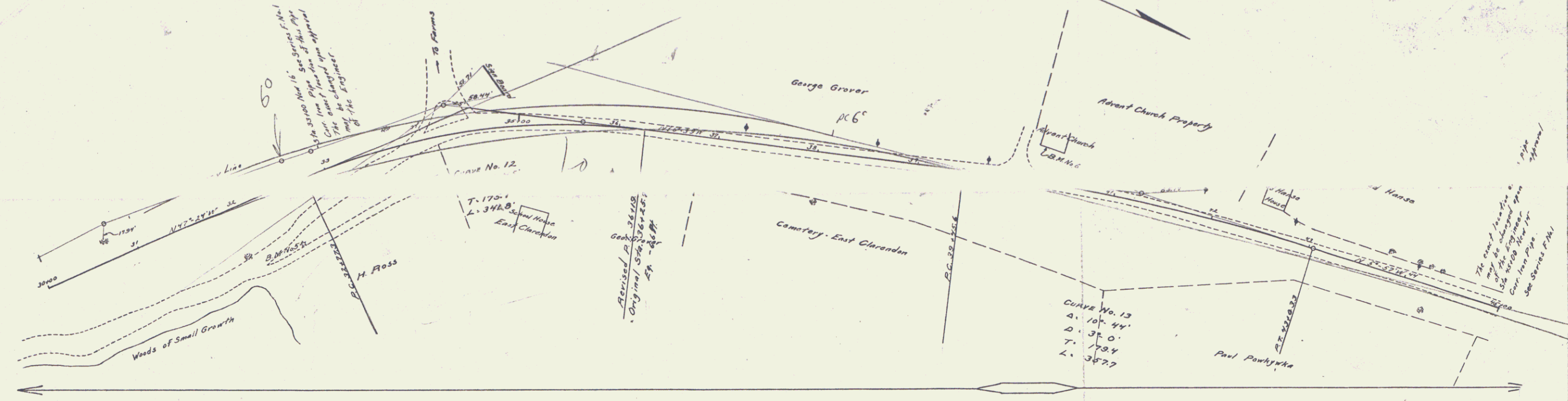
B.M. No. 3 Spike in E. 21m Sta. 17125 El. 167.51
 B.M. No. 4 Spike in E. 7m Sta. 24125 El. 161.87

Sheet P. 11.25 Filed

GUARD RAIL REQUIRED
 ON LEFT
 Sta 31+50 to Sta 33+50 Length 192 FT
 - 44+00 - 45+00 " 12 -
 ON RIGHT
 Sta 32+00 to Sta 33+02 Length 24 FT
 - 44+00 - 45+00 " 12 -
 TOTAL THIS SHEET 240 FT

NEW CULVERTS REQUIRED
 Sta 33+00 14" Cur. Iron Pipe Length 34 FT
 1-2 1/2-5 Concrete 1.5 cu yd
 Sta 45+00 14" Cur. Iron Pipe Length 26 FT
 1-2 1/2-5 Concrete 1.0 cu yd

FEEDBACK	ADD. NO.	LOCAL	TOTAL
DATE	NO.	NO.	NO.
3	17	45	2
			22



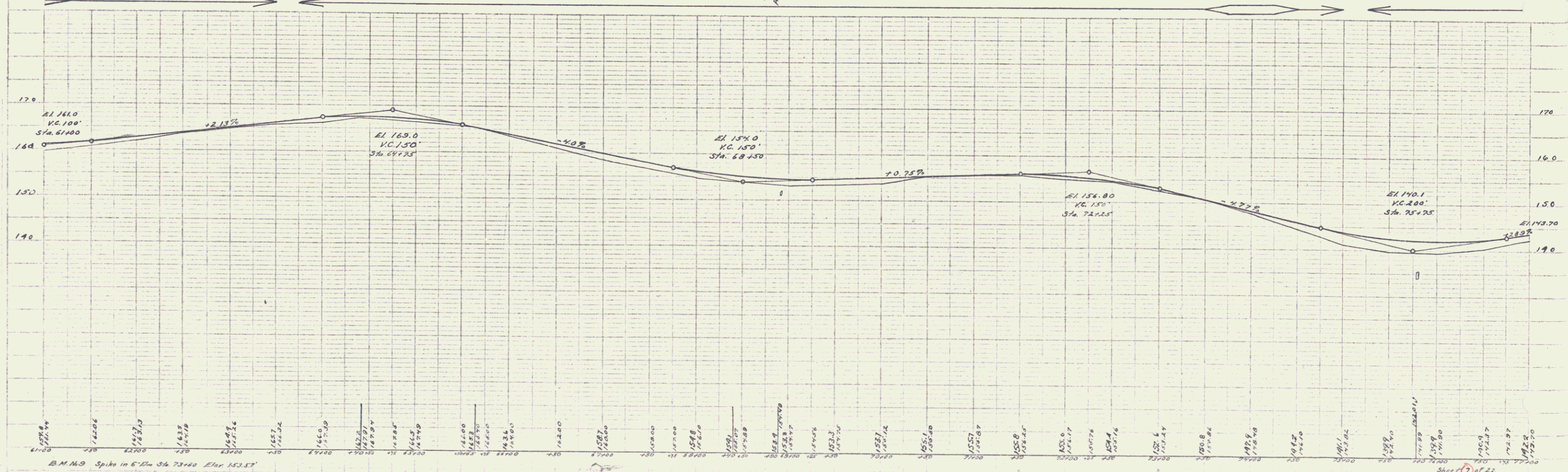
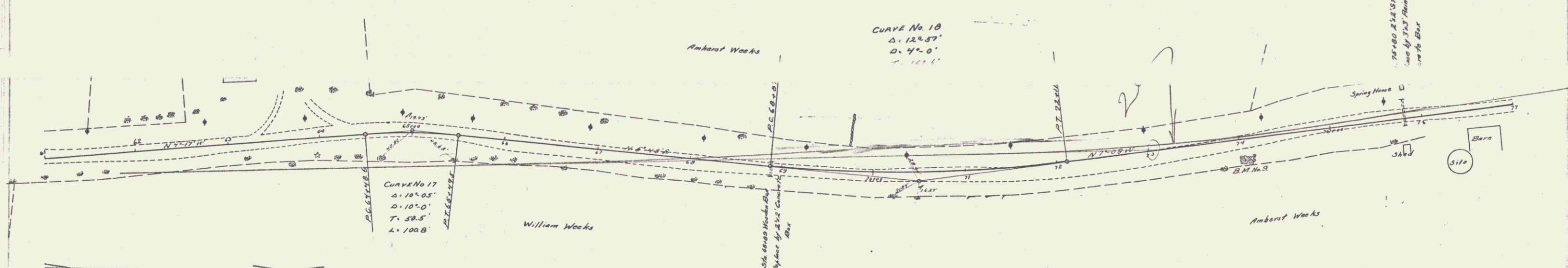
B.M. No. 5. Spike in 12" Pine Sta. 32+50 Elev. 202.21
 B.M. No. 6. S. Corner of Church Steps Sta. 40+25 Elev. 217.31

Scale 1" = 40' H.C.
 Series F. N. 45 Filed

GUARD RAIL REQUIRED
 ON LEFT
 Sta 68+70 to Sta 69+02 Length 24ft
 75x20 - - 76x30 - 120 -
 ON RIGHT
 Sta 68+70 to Sta 69+02 Length 24ft.
 75x30 - - 76x30 - 80 -
TOTAL THIS SHEET 248 FT.

NEW CULVERTS REQUIRED
 Sta 68+85 2'x2 Concrete Box
 1-2-4 Concrete 5.0 cu. yd.
 1-2-5 Concrete 6.9 cu. yd.
 Sta. 75+80 3'x3' Reinforced Concrete Box
 1-2-4 Concrete 7.2 cu. yd.
 1-2-5 Concrete 12.6 -
 Reinforcing Steel 220 pounds

NO. AND DATE	BY	REVISION	NO. SHEETS	TOTAL
1	VT	4.5	22	22



10/11/22
 10/11/22
 10/11/22

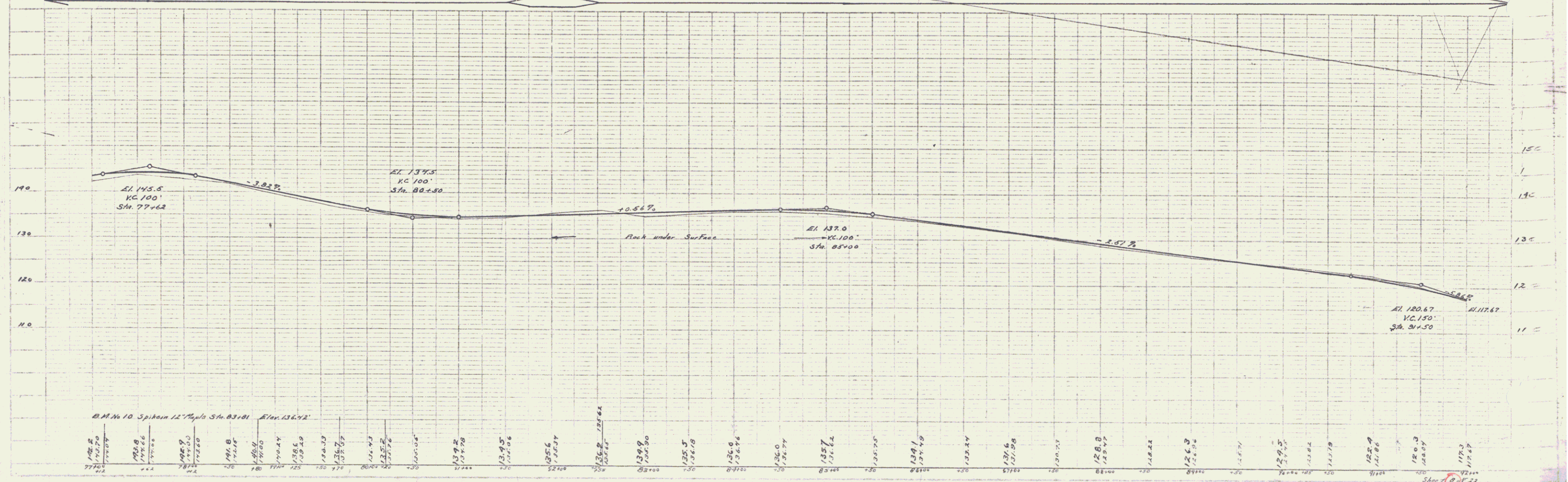
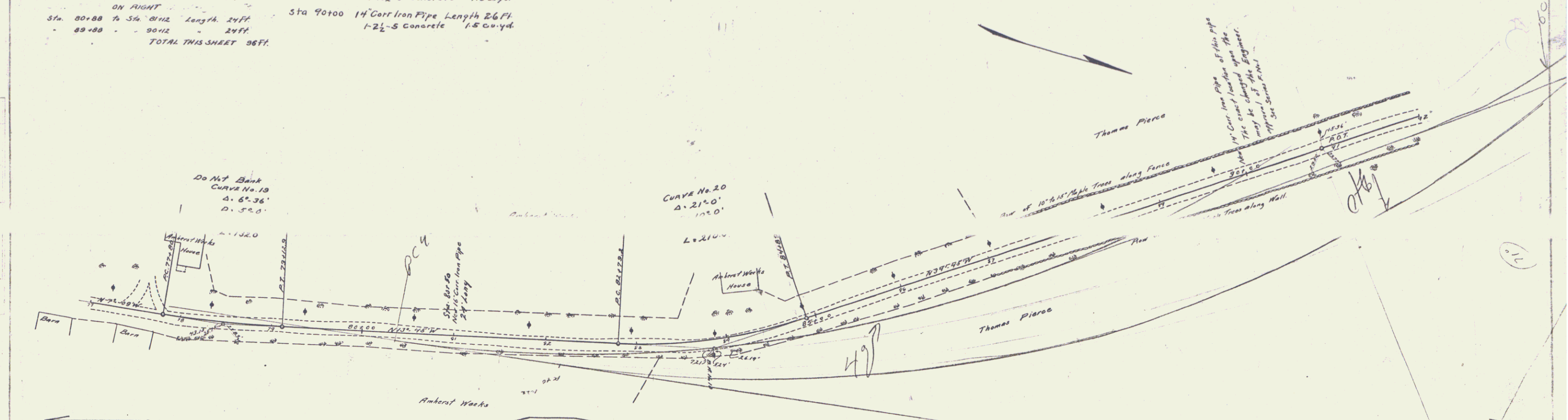
10/11/22
 10/11/22
 10/11/22

GUARD RAIL REQUIRED ON LEFT
 Sta. 80+88 to Sta. 81+12 Length 24 FT.
 Sta. 83+88 to Sta. 84+12 Length 24 FT.
ON RIGHT
 Sta. 80+88 to Sta. 84+12 Length 24 FT.
 Sta. 89+88 to Sta. 90+12 Length 24 FT.
TOTAL THIS SHEET 96 FT.

NEW CULVERTS REQUIRED
 Sta. 80+50 to 80+70 16" Corr Iron Pipe Length 20 FT.
 Sta. 80+70 to 80+90 1-2 1/2" S Concrete 1.5 cu. yd.
 Sta. 90+00 to 90+20 14" Corr Iron Pipe Length 20 FT.
 Sta. 90+20 to 90+40 1-2 1/2" S Concrete 1.5 cu. yd.

Standard Underdrain Required
 Sta. 91+80 - 94+00 220'

PER AREA	DATE	FILE NO	PLAN NO	SCALE	FOOTING
9	VT	45	22	8	22



B.M. No. 10 Spikes 12" Pipe Sta. 83+81 Elev. 136.72'

Sta.	Elev.	Sta.	Elev.	Sta.	Elev.	Sta.	Elev.	Sta.	Elev.
77+00	137.5	83+81	136.72	89+88	135.5	95+88	134.5	101+88	133.5
78+00	137.0	84+00	136.5	90+00	135.0	96+00	134.0	102+00	133.0
79+00	136.5	85+00	136.0	91+00	134.5	97+00	133.5	103+00	132.5
80+00	136.0	86+00	135.5	92+00	134.0	98+00	133.0	104+00	132.0
81+00	135.5	87+00	135.0	93+00	133.5	99+00	132.5	105+00	131.5
82+00	135.0	88+00	134.5	94+00	133.0	100+00	132.0	106+00	131.0
83+00	134.5	89+00	134.0	95+00	132.5	101+00	131.5	107+00	130.5
84+00	134.0	90+00	133.5	96+00	132.0	102+00	131.0	108+00	130.0
85+00	133.5	91+00	133.0	97+00	131.5	103+00	130.5	109+00	129.5
86+00	133.0	92+00	132.5	98+00	131.0	104+00	130.0	110+00	129.0
87+00	132.5	93+00	132.0	99+00	130.5	105+00	129.5	111+00	128.5
88+00	132.0	94+00	131.5	100+00	130.0	106+00	129.0		
89+00	131.5	95+00	131.0	101+00	129.5	107+00	128.5		
90+00	131.0	96+00	130.5	102+00	129.0	108+00	128.0		
91+00	130.5	97+00	130.0	103+00	128.5	109+00	127.5		
92+00	130.0	98+00	129.5	104+00	128.0	110+00	127.0		
93+00	129.5	99+00	129.0	105+00	127.5				
94+00	129.0	100+00	128.5						
95+00	128.5								
96+00	128.0								
97+00	127.5								
98+00	127.0								
99+00	126.5								
100+00	126.0								
101+00	125.5								
102+00	125.0								
103+00	124.5								
104+00	124.0								
105+00	123.5								
106+00	123.0								
107+00	122.5								
108+00	122.0								
109+00	121.5								
110+00	121.0								
111+00	120.5								
112+00	120.0								
113+00	119.5								
114+00	119.0								
115+00	118.5								
116+00	118.0								
117+00	117.5								

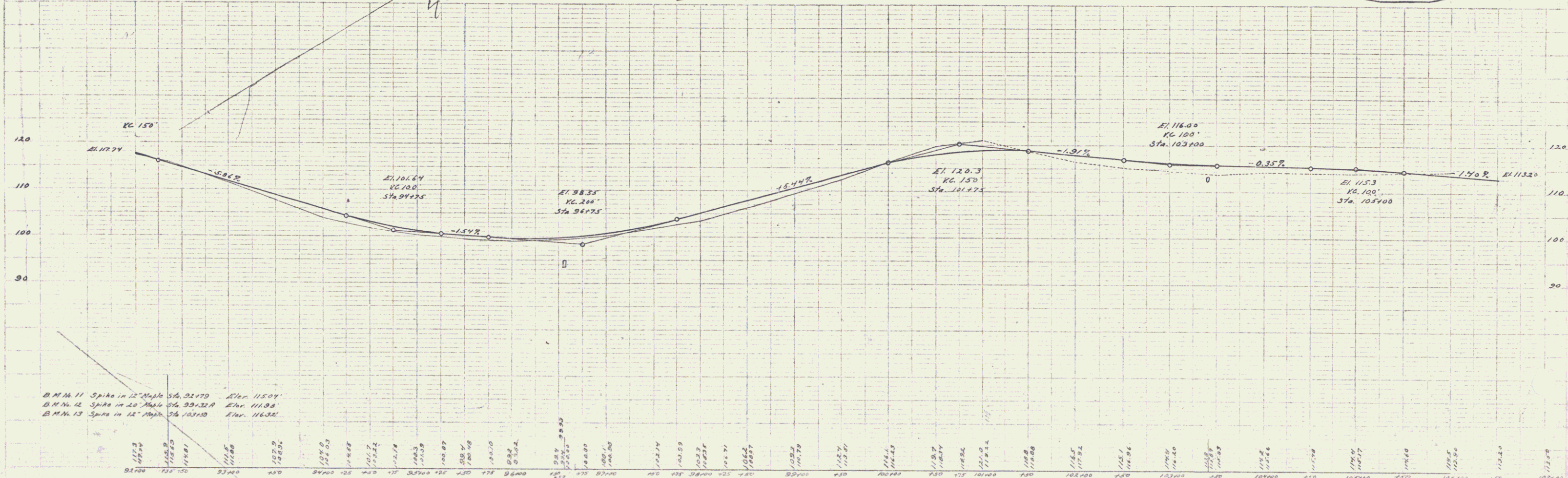
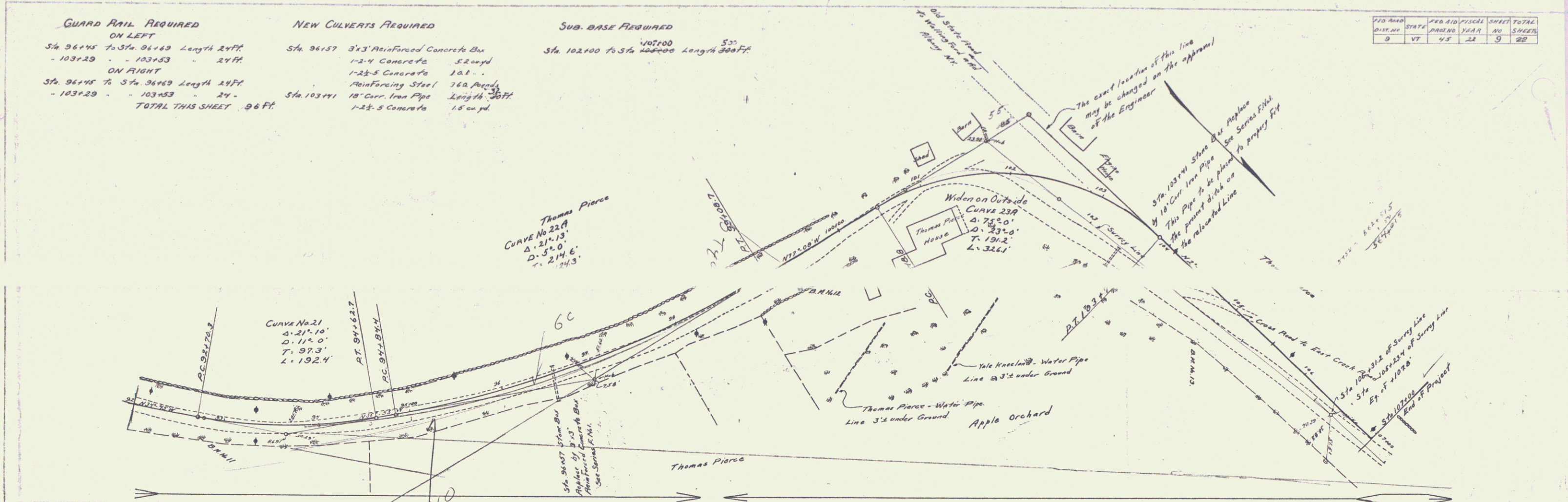
Sheet No. 45 Filed

GUARD RAIL REQUIRED
ON LEFT
 Sta 96+45 to Sta 96+63 Length 24 FT
 - 103+29 - - 103+53 - 24 FT
ON RIGHT
 Sta 96+45 to Sta 96+63 Length 24 FT
 - 103+29 - - 103+53 - 24 -
TOTAL THIS SHEET 96 FT.

NEW CULVERTS REQUIRED
 Sta 96+57 3x3 Reinforced Concrete Box
 1-2x4 Concrete 52 cu yd
 Reinforcing Steel 181 -
 Sta 103+41 18" Curr. Iron Pipe Length 36 FT
 1-2x5 Concrete 15 cu yd

SUB. BASE REQUIRED
 105+00 50'
 Sta 102+00 to Sta 105+00 Length 300 FT

DIST. NO.	STATE	PER. NO.	PIECE NO.	SHEET NO.	TOTAL SHEETS
0	VT	45	22	9	22



B.M. 11 Spire in 12" Maple Sta. 92+79 Elev. 115.01'
 B.M. 12 Spire in 20" Maple Sta. 99+32 Elev. 111.98'
 B.M. 13 Spire in 12" Maple Sta. 103+10 Elev. 116.32'

STATION	ELEVATION	STATION	ELEVATION	STATION	ELEVATION
90+00	117.74	95+00	101.64	100+00	120.3
91+00	115.80	96+57	98.35	101+00	116.00
92+00	114.80	98+00	105.00	102+00	115.3
93+00	113.80	100+00	103.00	103+00	114.5
94+00	112.80	101+00	101.00	104+00	113.5
95+00	111.80	102+00	99.00	105+00	112.5
96+00	110.80	103+00	97.00	106+00	111.5
97+00	109.80	104+00	95.00	107+00	110.5
98+00	108.80	105+00	93.00		
99+00	107.80	106+00	91.00		
100+00	106.80	107+00	89.00		
101+00	105.80	108+00	87.00		
102+00	104.80	109+00	85.00		
103+00	103.80	110+00	83.00		
104+00	102.80	111+00	81.00		
105+00	101.80	112+00	79.00		
106+00	100.80	113+00	77.00		
107+00	99.80	114+00	75.00		
		115+00	73.00		
		116+00	71.00		
		117+00	69.00		
		118+00	67.00		
		119+00	65.00		
		120+00	63.00		

Sheet 22
 Scale 1" = 40' R/W
 9