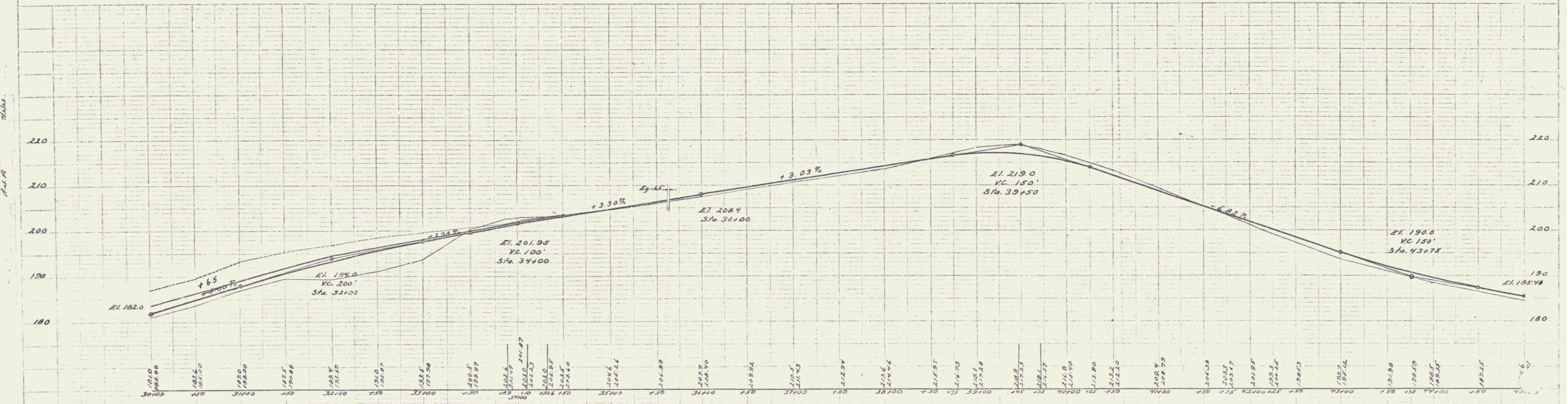
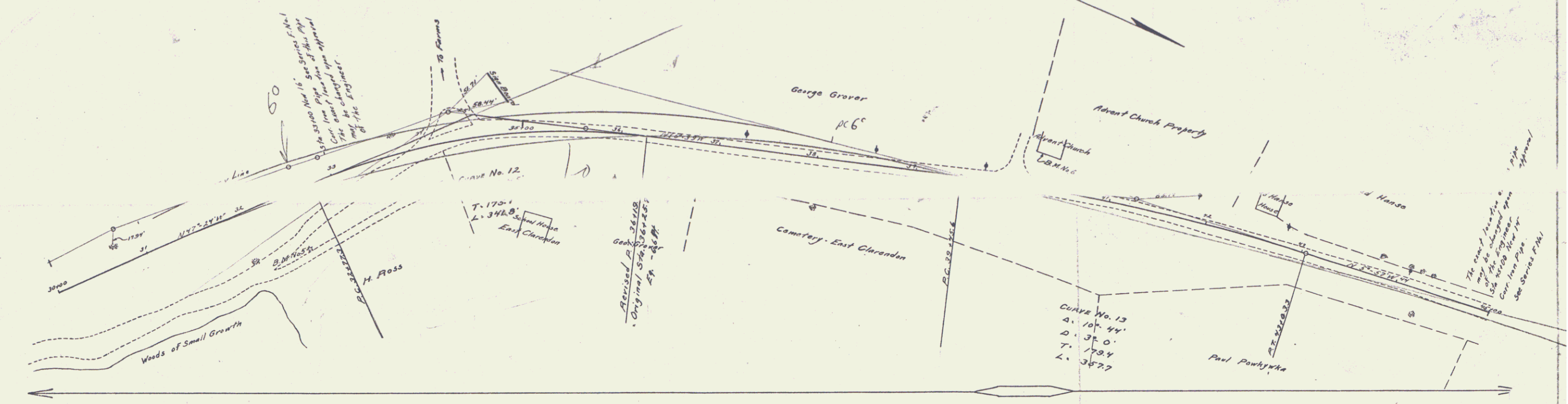


GUARD RAIL REQUIRED
 ON LEFT
 Sta 31+50 to Sta 33+50 Length 192 FT
 - 44+00 - 45+00 " 12 -
 ON RIGHT
 Sta 32+00 to Sta 33+02 Length 24 FT
 - 44+00 - 45+00 " 12 -
 TOTAL THIS SHEET 240 FT

NEW CULVERTS REQUIRED
 Sta 33+00 14" Cur. Iron Pipe Length 34 FT
 1-2 1/2-5 Concrete 1.5 cu yd
 Sta 45+00 14" Cur. Iron Pipe Length 26 FT
 1-2 1/2-5 Concrete 1.0 cu yd

FEEDBACK	ADD. NO.	FOCAL	SHAW	TOTAL
DATE	NO.	NO.	NO.	NO.
3	17	45	2	22



B.M. No. 5. Spike in 12" Pine Sta. 32+50 Elev. 202.21
 B.M. No. 6. S. Corner of Church Steps Sta. 40+25 Elev. 217.31

Scale 1" = 40' H.C.
 Series F. No. 45 Filed