

**GUARD RAIL REQUIRED ON LEFT**

Sta. 17125 to Sta. 22163 Length 498 FT  
 - 24x48 - - 25x10 - 24 -  
 - 26x30 - - 27x22 - 24 -  
**ON RIGHT**

Sta. 17103 to Sta. 18107 Length 244 FT  
 - 22x38 - - 22x62 - 24 -  
 - 25x22 - - 25x46 - 24 -  
 - 26x30 - - 27x14 - 24 -  
**TOTAL THIS SHEET 632 FT**

**NEW CULVERTS REQUIRED**

Sta. 17195 2x2 Concrete Box  
 1-2-4 Concrete 6.3 cu yd.  
 1-2-5 Concrete 8.2 cu yd.  
 Sta. 22150 18" Cur. Iron Pipe Length 24 FT  
 1-2-5 Concrete 1.5 cu yd.  
 Sta. 24125 18" Cur. Iron Pipe Length 80 FT  
 1-2-5 Concrete 1.7 cu yd.  
 Sta. 29000 18" Cur. Iron Pipe Length 30 FT  
 1-2-5 Concrete 4.0 cu yd.

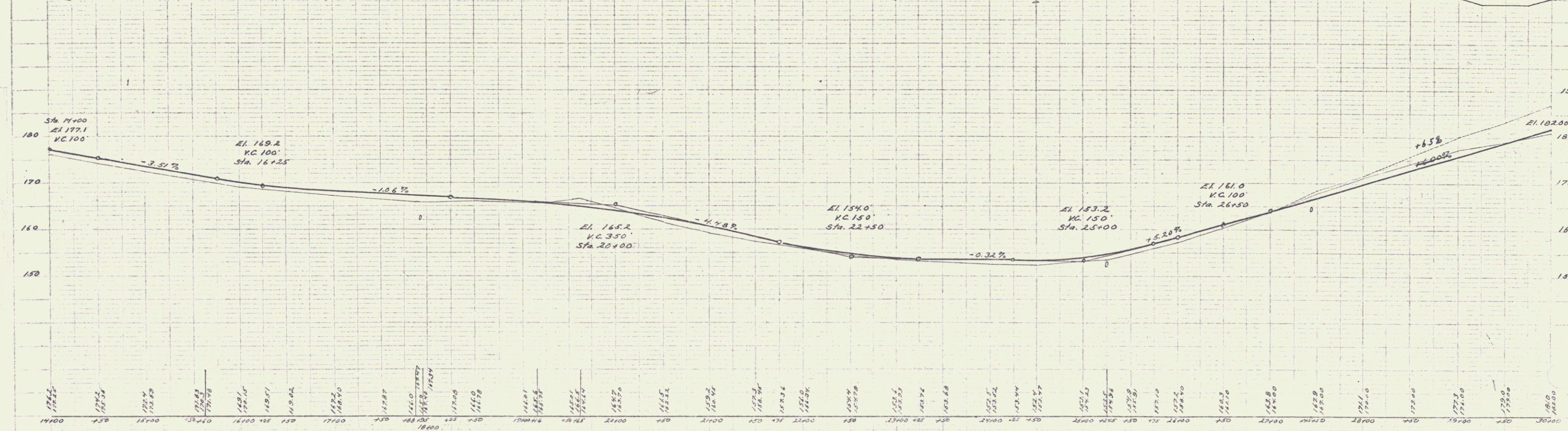
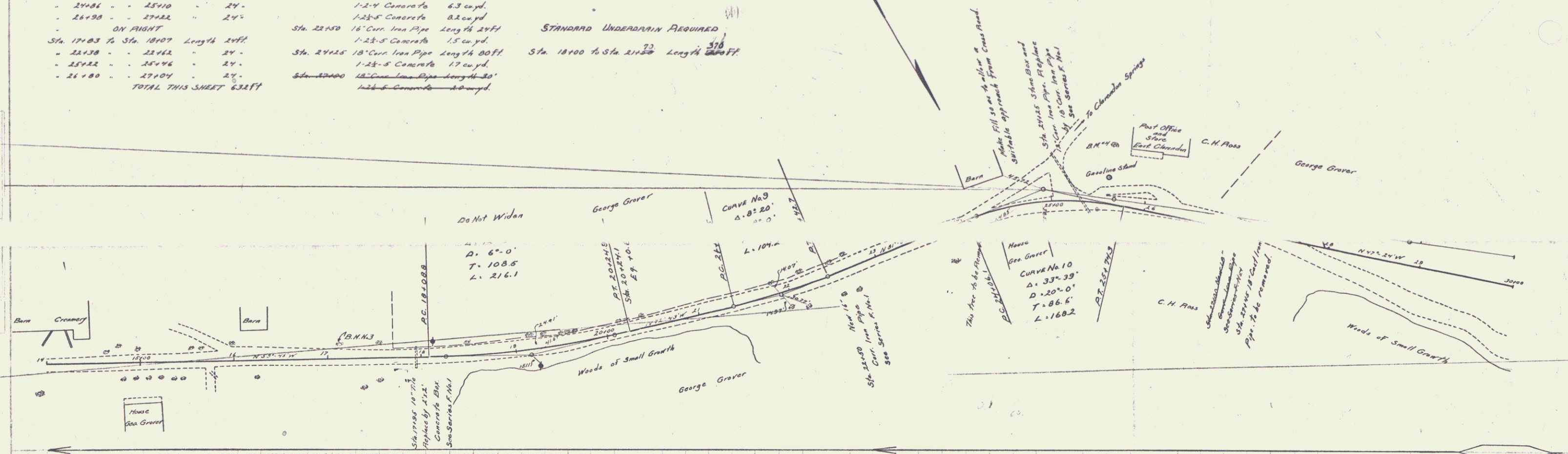
**SUB-DRAIN REQUIRED**

Sta. 18100 to Sta. 21150 Length 305 FT

**STANDARD UNDERDRAIN REQUIRED**

Sta. 18100 to Sta. 21150 Length 305 FT

FED. ROAD DIST. NO.	STATE	FED. AID FISCAL YEAR	SHEET NO.	TOTAL SHEETS
8	VT	95	22	4



B.M. No. 3 Spike in E. 21m Sta. 17125 El. 167.51  
 B.M. No. 4 Spike in E. 7m Sta. 24150 El. 161.87

Sheet P. 11.25 Filed