

SHEET NO.	TITLE PAGE
2	TYPICAL CROSS-SECTION OF IMPROVEMENT
3	BANKING AND WIDENING TABLES
4-14	PLAN AND PROFILE
15	STANDARD SHEET S-28 PIPE CULVERTS
16	S-30 GUARD RAIL
17	S-30A STANDARD UNDERDRAIN
18	S-40 BARRICADES, SIGNS AND LIGHTS
19	S-41 ROUNDING OF CUT SLOPES
20	S48-46 THREE STRAND CABLE GUARD RAIL
20A	S49-46 SPRING MOUNTED PANEL TYPE GUARD RAIL, ITEM 547
21	SCW2-3 3x3 RC BOX INLETS AND OUTLETS
22	SC 2-4 STANDARD CULVERT SECTIONS
23-79	CROSS SECTIONS

STANDARD STRUCTURE SHEETS APPROVED BY THE CHIEF ENGINEER, VERMONT STATE DEPARTMENT OF HIGHWAYS

S-28	APRIL 25, 1941
S-30	MAY 12, 1941
S-30A	APRIL 19, 1941
S-40	DECEMBER 18, 1945
S-48-46	MAY 13, 1946

STATE OF VERMONT
STATE HIGHWAY DEPARTMENT

PLAN AND PROFILE OF PROPOSED
STATE HIGHWAY

FEDERAL AID PROJECT

TOWN OF CLARENDON

VERMONT ROUTE 103

LUDLOW-RUTLAND ROAD

BEGINNING AT THE SHREWSBURY-CLARENDON TOWN LINE AND EXTENDING WESTERLY 10,566.2 FEET TO U.S. 7 AT PIERCE'S CORNERS

LENGTH OF MAIN LINE 10,566.2 FT. = 2.001 MI.
LENGTH OF SPUR LINE 153.0 FT. = 0.029 MI.
LENGTH OF PROJECT 10,719.2 FT. = 2.030 MI.

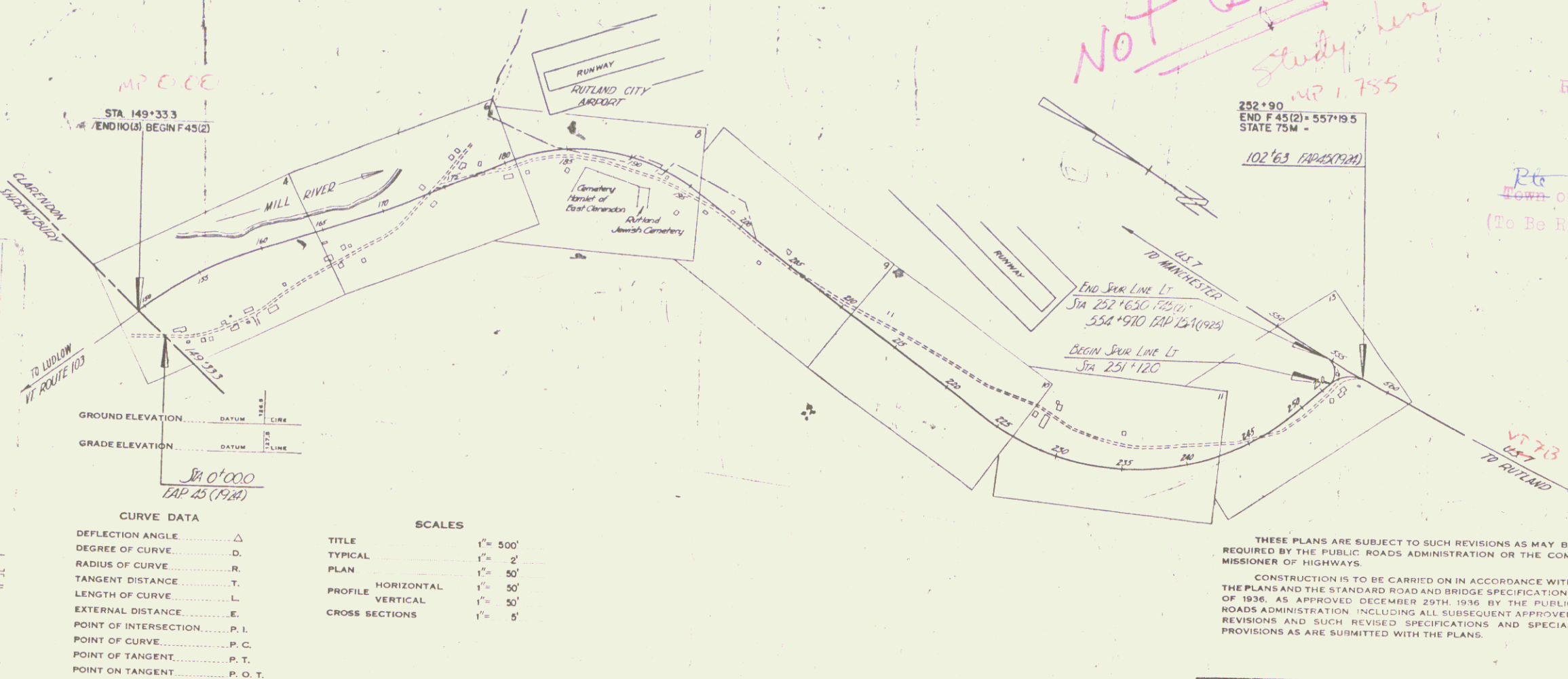
FED. ROAD DIST. NO.	STATE	FED. AID PROJ. NO.	FISCAL YEAR	SHEET NO.	TOTAL SHEETS
9	VT.	7-25(2)	1946	1	79



Scale 1" = 1 mile

- COUNTY LI
- TOWN LINE
- FENCE LINE
- STONE WALL
- UNFENCED GUARD RAIL
- TRAVELED RAILROAD
- RETAINING WALL
- CENTRE LINE
- SURVEY LINE
- CULVERT
- DROP INLET
- TROLLEY RAIL
- POWER POLE
- TELEPHONE POLE
- TREES
- HEDGE

LENGTH 2,030 MI.
NUMBER 75(2)
DATE 12/5/46
NOTE: We constructed a line extending westward to Pierce's Corners.



Not Built
study line
MP 1.755

RIGHT-OF-WAY DIVISION
TOWN FILE
PERPETUAL
Rt. of VT 103
(To Be Returned to R.O.W. Division)

APPROVED: Dec 9, 1946
H. H. Thayer
COMMISSIONER OF HIGHWAYS

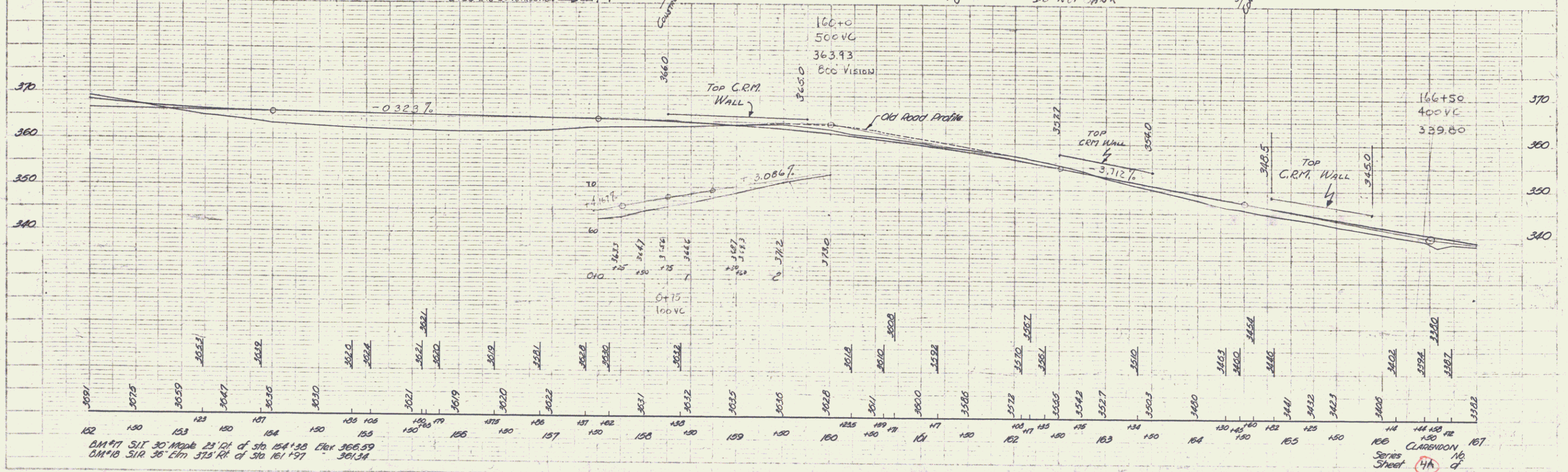
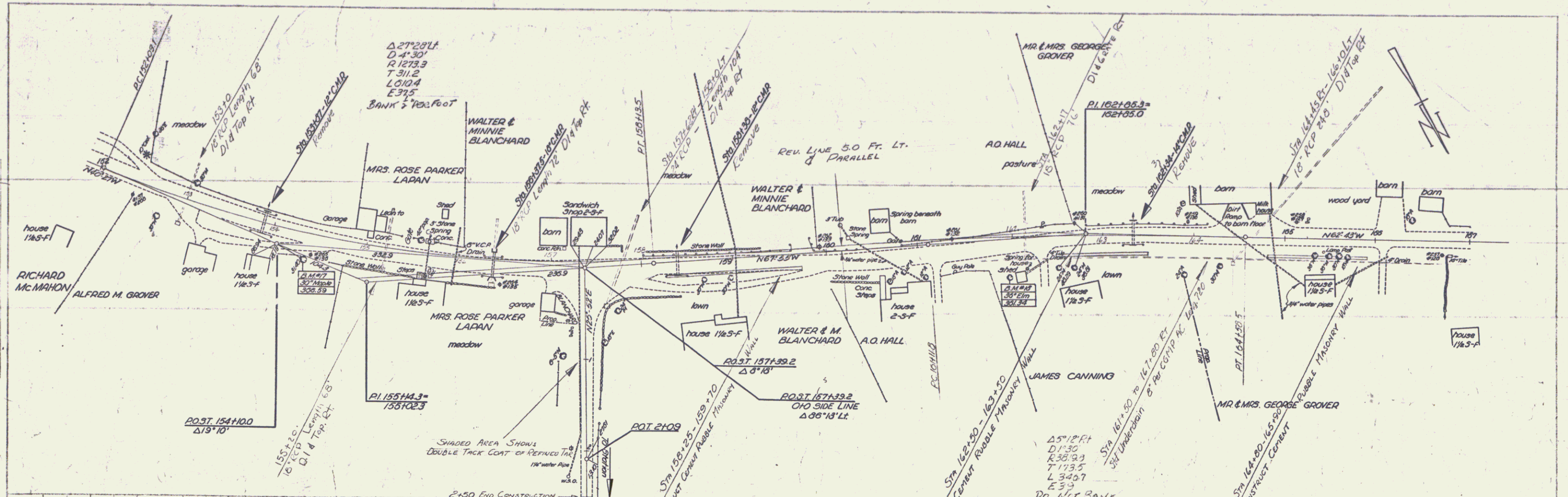
Pin # DDR 127
Date 12/5/1946

THESE PLANS ARE SUBJECT TO SUCH REVISIONS AS MAY BE REQUIRED BY THE PUBLIC ROADS ADMINISTRATION OR THE COMMISSIONER OF HIGHWAYS.
CONSTRUCTION IS TO BE CARRIED ON IN ACCORDANCE WITH THE PLANS AND THE STANDARD ROAD AND BRIDGE SPECIFICATIONS OF 1936, AS APPROVED DECEMBER 25TH, 1936 BY THE PUBLIC ROADS ADMINISTRATION INCLUDING ALL SUBSEQUENT APPROVED REVISIONS AND SUCH REVISED SPECIFICATIONS AND SPECIAL PROVISIONS AS ARE SUBMITTED WITH THE PLANS.

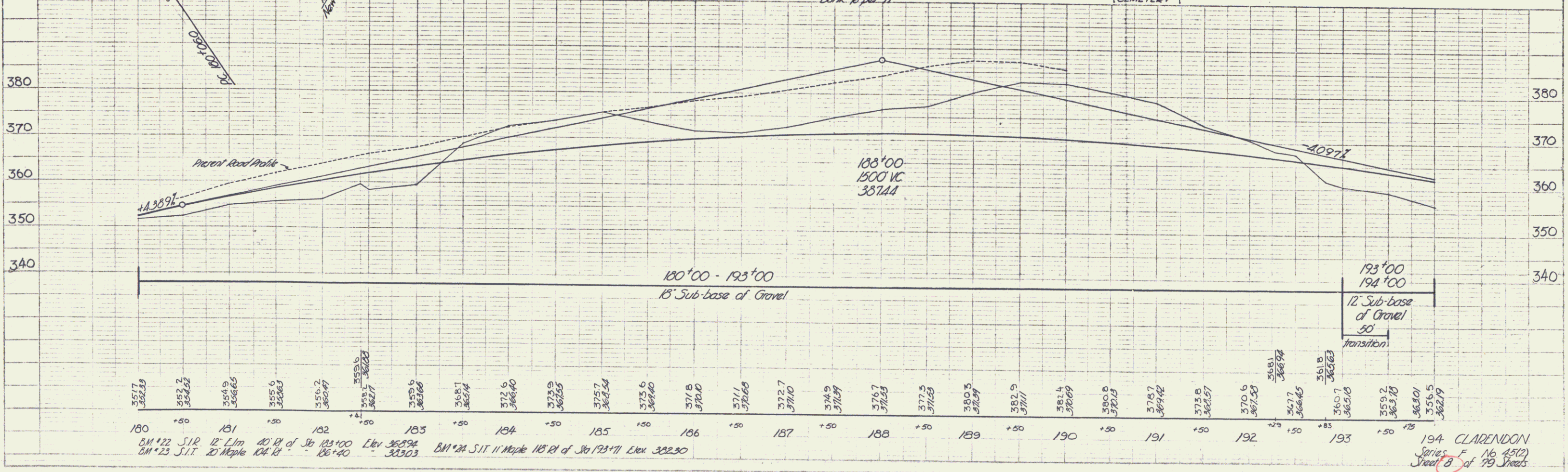
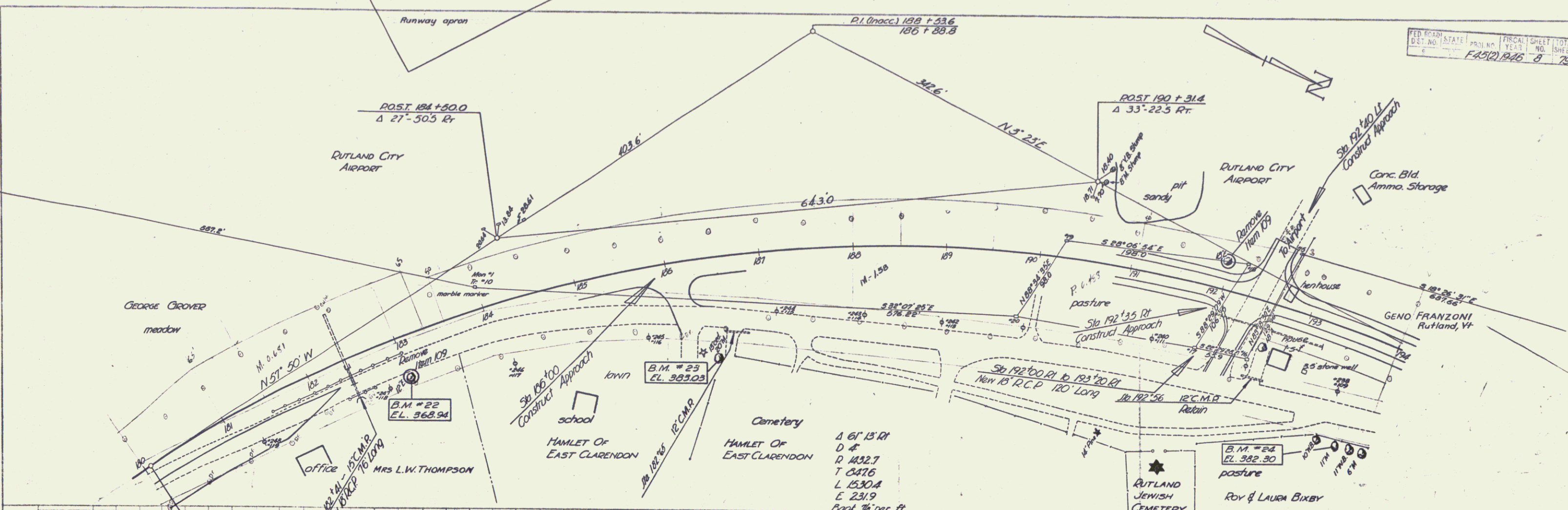
APPROVED: [Signature] DISTRICT HIGHWAY COMMISSIONER
SERIES F No. 45(2) FILED
SHEET 1 OF 79

PLAN
 DATE: 10/15/20
 DRAWN BY: JAC
 CHECKED BY: JAC

PROFILE
 DATE: 10/15/20
 DRAWN BY: JAC
 CHECKED BY: JAC

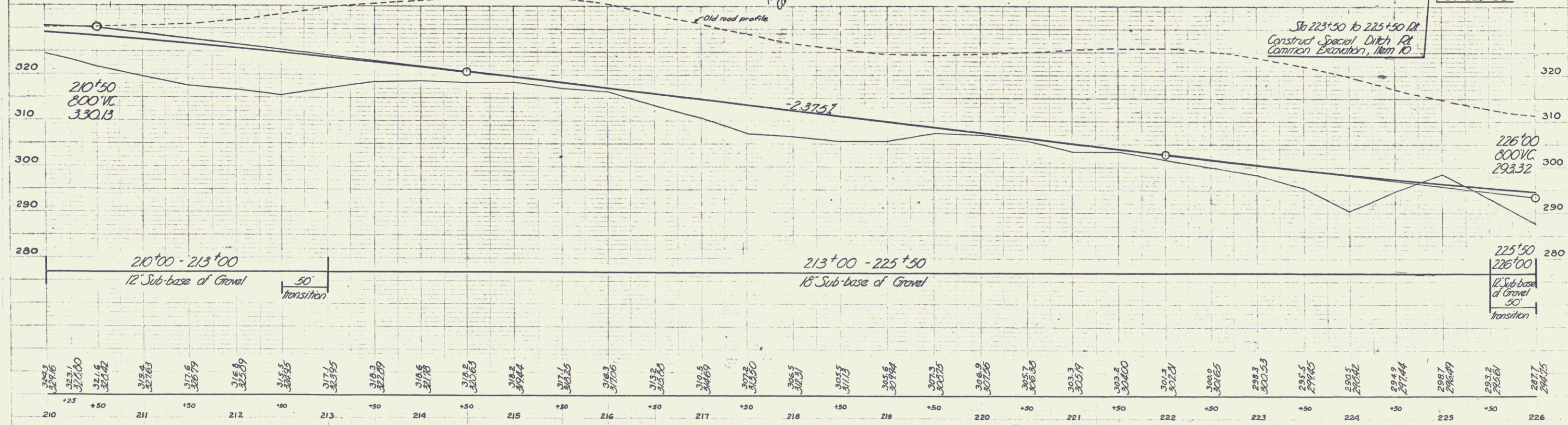
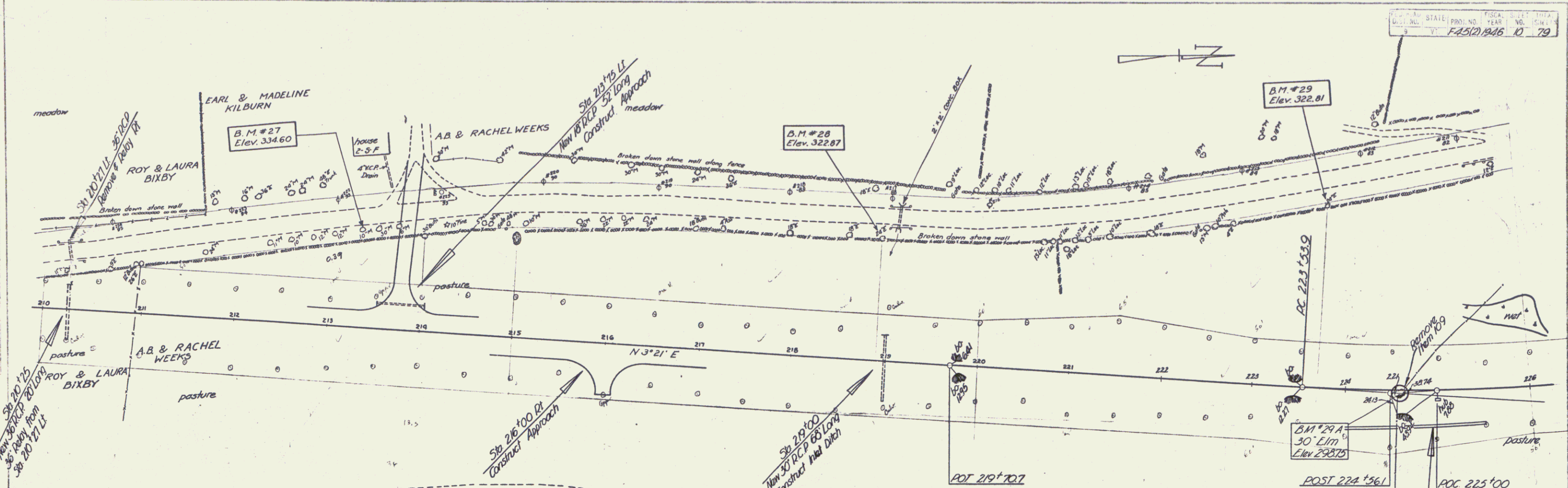


DM#7 SIT 30' Made 25' 1/4' of Sta 154+30 Elev 366.59
 DM#8 SIR 36' 2 1/2' of Sta 161+37 Elev 361.34



351.7
 352.2
 354.9
 355.6
 356.2
 358.7
 373.6
 377.5
 380.5
 382.5
 382.4
 380.0
 378.7
 375.0
 370.6
 367.4
 365.7
 365.1
 365.0
 363.2
 363.7
 362.9

180 B.M. #22 S.I.P. 12' Elm 10' of Sta 183+00 Elev 365.94
 B.M. #23 S.I.T. 20 Maple 104' E1 106+40 Elev 363.03
 181
 182
 183 B.M. #24 S.I.T. 11' Maple 118' E1 of Sta 193+71 Elev 362.90
 184
 185
 186
 187
 188
 189
 190
 191
 192
 193
 194 CLARENDON Series F of 16 (4572) Sheet 8 of 79 Sheets



210	210.25	210.50	211	211.50	212	212.50	213	213.50	214	214.50	215	215.50	216	216.50	217	217.50	218	218.50	219	219.50	220	220.50	221	221.50	222	222.50	223	223.50	224	224.50	225	225.50	226
327.6	327.40	327.15	326.90	326.65	326.40	326.15	325.90	325.65	325.40	325.15	324.90	324.65	324.40	324.15	323.90	323.65	323.40	323.15	322.90	322.65	322.40	322.15	321.90	321.65	321.40	321.15	320.90	320.65	320.40	320.15	319.90	319.65	319.40

B.M. # 27 Spike in Root of 10" Maple 105' Left of Sta 213+30 ~ Elev. 334.60
 " 28 " " " " 24' Elm 130' " " " " 216+50 " 322.87
 " 29 " " " " 197' " " " " 225+69 " 322.81

CLARENDON
 Series F No. 45(2)
 Sheet 10 of 79 Sheets

