

PLAN  
 DRAWN BY  
 CHECKED BY  
 DATE  
 SCALE  
 SHEET NO. 2/26

TITLE  
 PROJECT NO.  
 DATE  
 SCALE  
 SHEET NO.

Demolition & Removal of Building - Item 5B  
 Sta. 138+50 LRV  
 Construct Approach  
 135+10 - 136+00

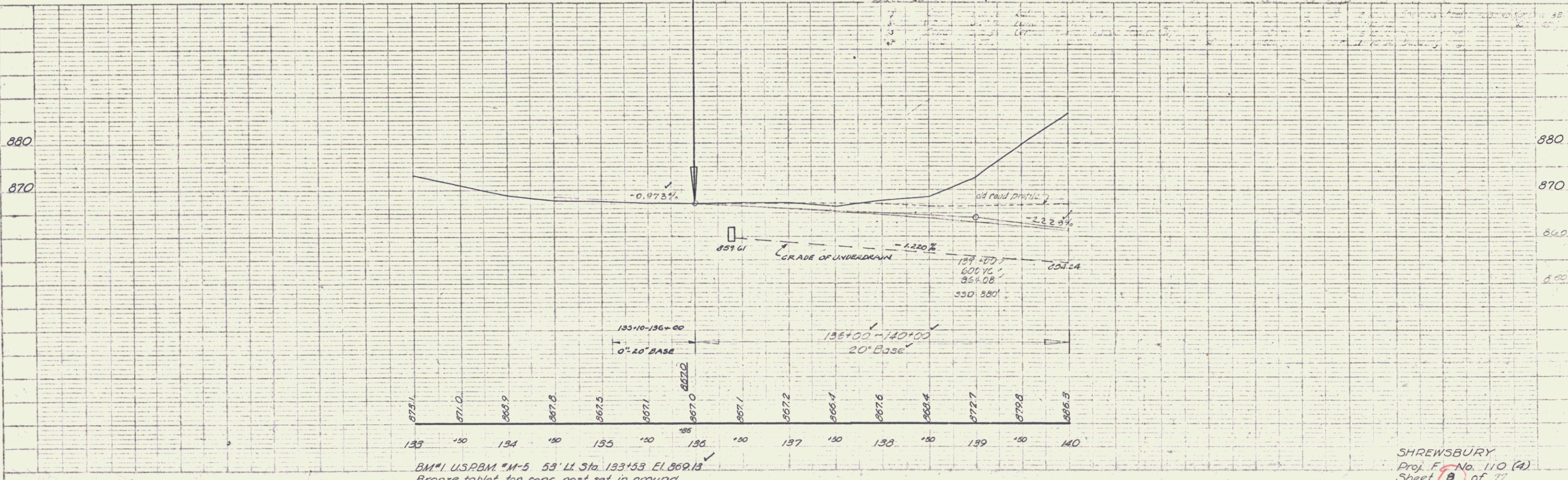
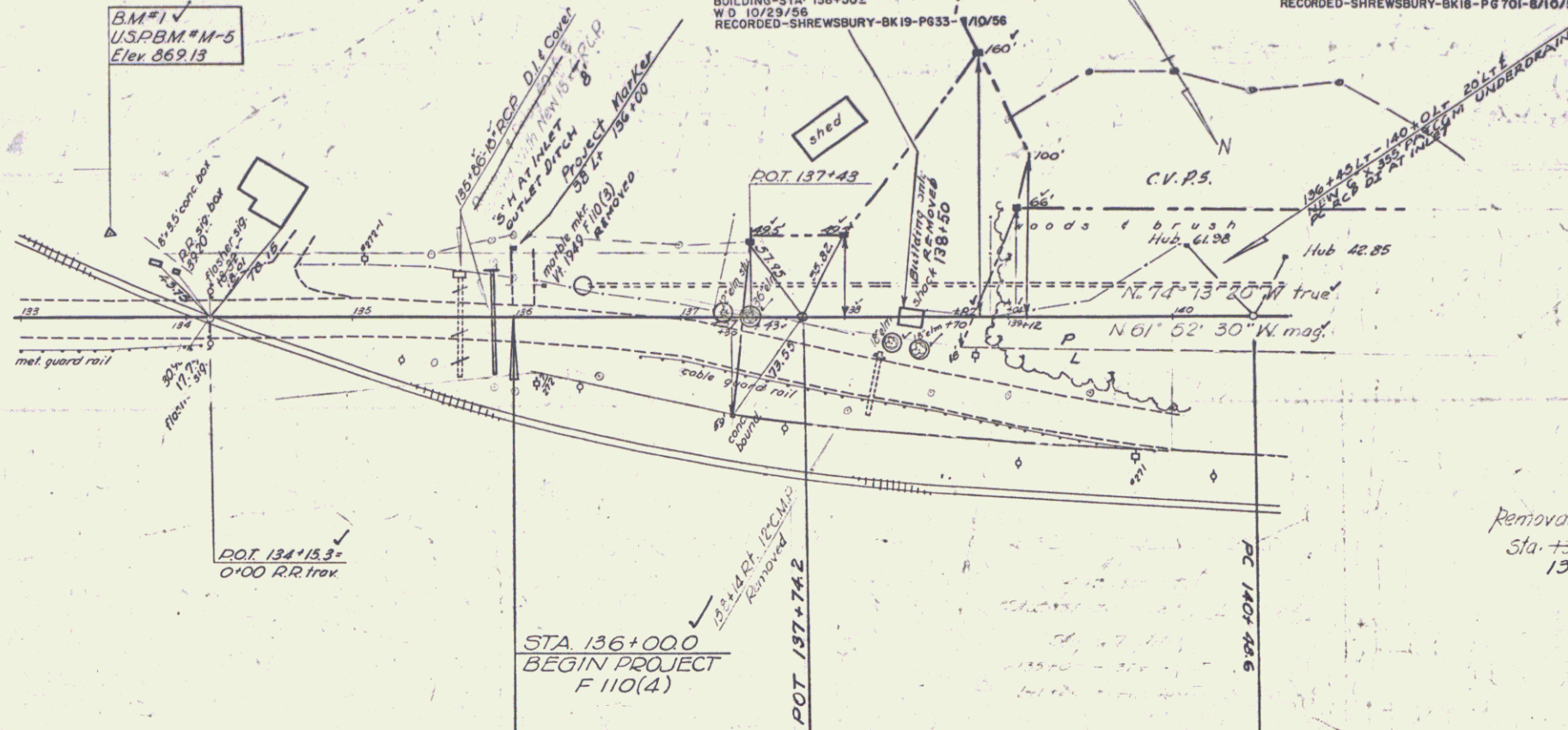
Construct Drive  
Sta. 135+50 LRV

Removal & Disposal of Present Guard Rail  
 Sta. 136+15 - 140+00 LRV  
 #3 CENTRAL VERMONT PUBLIC SERVICE CORR  
 (A.O. 66) STA 138+70-142+80  
 COND. 8/10/56  
 RECORDED-SHREWSBURY-BK18-P6701-8/10/56

BM#1  
 USPBM#M-5  
 Elev. 869.13

RUTLAND RAILROAD CORPORATION  
 SLOPE RIGHTS-STA 135+00-137+40±  
 COND. 8/10/56  
 RECORDED-SHREWSBURY-BK18-P6701-8/10/56  
 Bellows Falls LRV Sta. 137+40 - 138+24±86

#2 LILLIAN JAKWAY  
 (A.O. 37) STA 137+37-139+12±  
 W.D. 10/23/56  
 RECORDED-SHREWSBURY-BK19-P631-11/10/56  
 #4 CHARLES H. BROWN  
 BUILDING-STA 138+50±  
 W.D. 10/23/56  
 RECORDED-SHREWSBURY-BK19-P633-11/10/56



BM#1 USPBM#M-5 53' LI Sta. 133+53 EL. 869.13  
 Bronze tablet top conc. post set in ground

SHREWSBURY  
 Proj. F. No. 110 (4)  
 Sheet 8 of 77