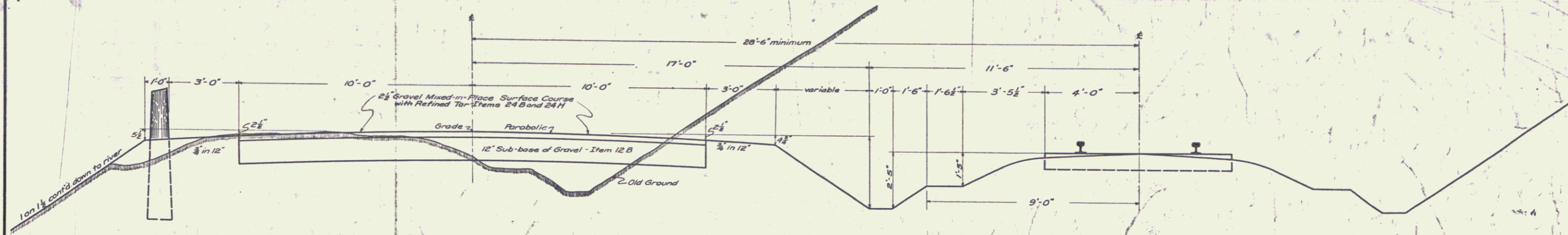


# TYPICAL SECTION

2 1/2" GRAVEL MIXED-IN-PLACE SURFACE COURSE WITH REFINED TAR-ITEMS 24B & 24H



Town Shrewsbury  
 Project: WPTH 110A  
 Date: 9/1/35  
 Pin: 00122  
 Route VT103

MP 2.199-4.236  
 Not Constructed  
 Study Lines

RIGHT-OF-WAY DIVISION  
 TOWN FILE  
 PERPETUAL  
 Town of VT103  
 (To Be Returned To R.O.W. Division)

END AREAS IN SQUARE FEET	
WIDTH	20' 22'
2 1/2" G.M.I.P. SURFACE COURSE	4.17' 4.58'
12" SUB-BASE OF GRAVEL	20.00 22.00

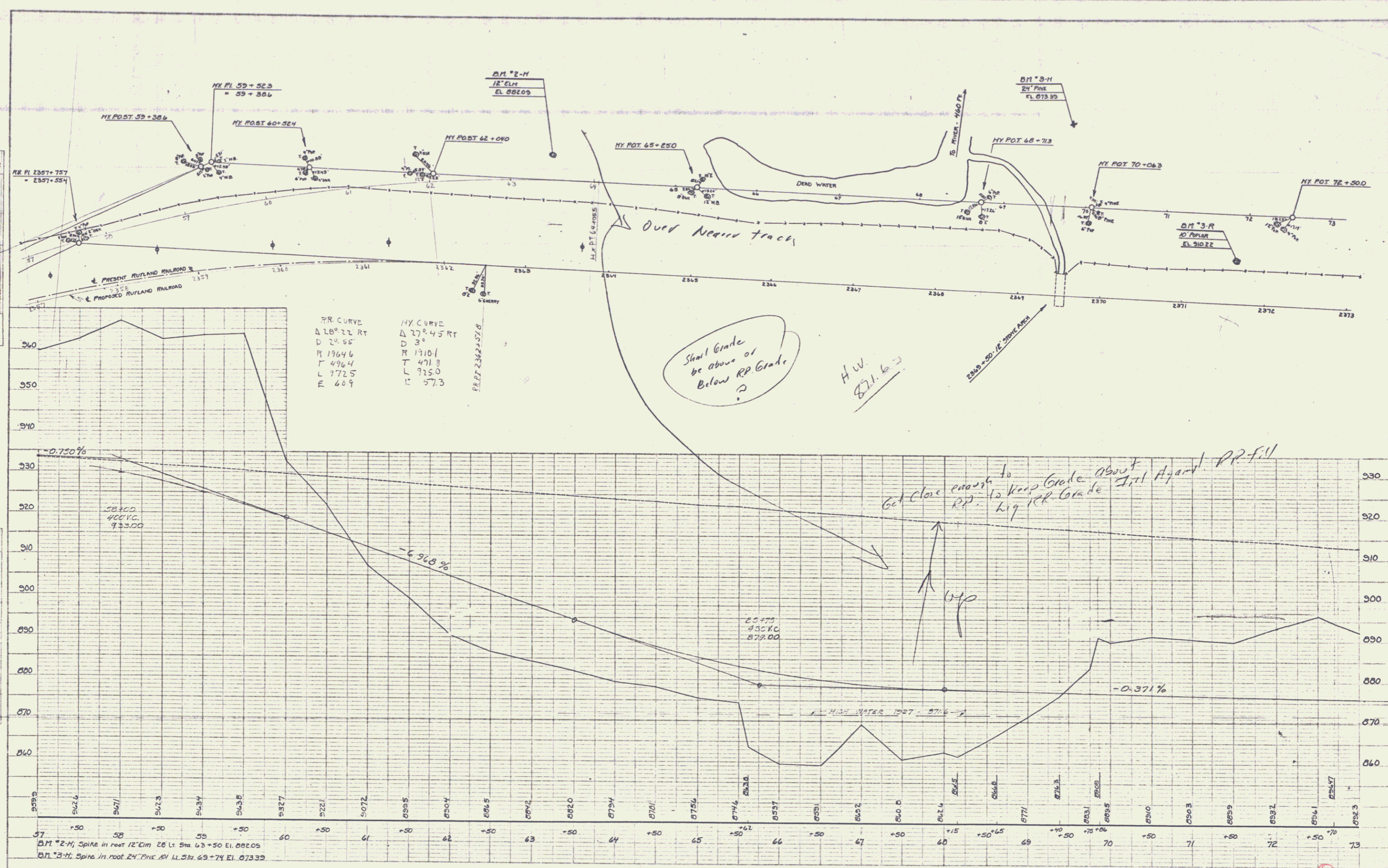
Surveyed by A.A. Doe  
 Designed by A.J. Runnels  
 Drawn by C.F. Laythe  
 Traced by G.J. Coltrano  
 Checked by  
 Series W.P.S.H. No. 110A  
 Sheet 1 of 1  
 Filed  
 Sheets





PLAN  
 DATE  
 DRAWN BY  
 CHECKED BY  
 NO.

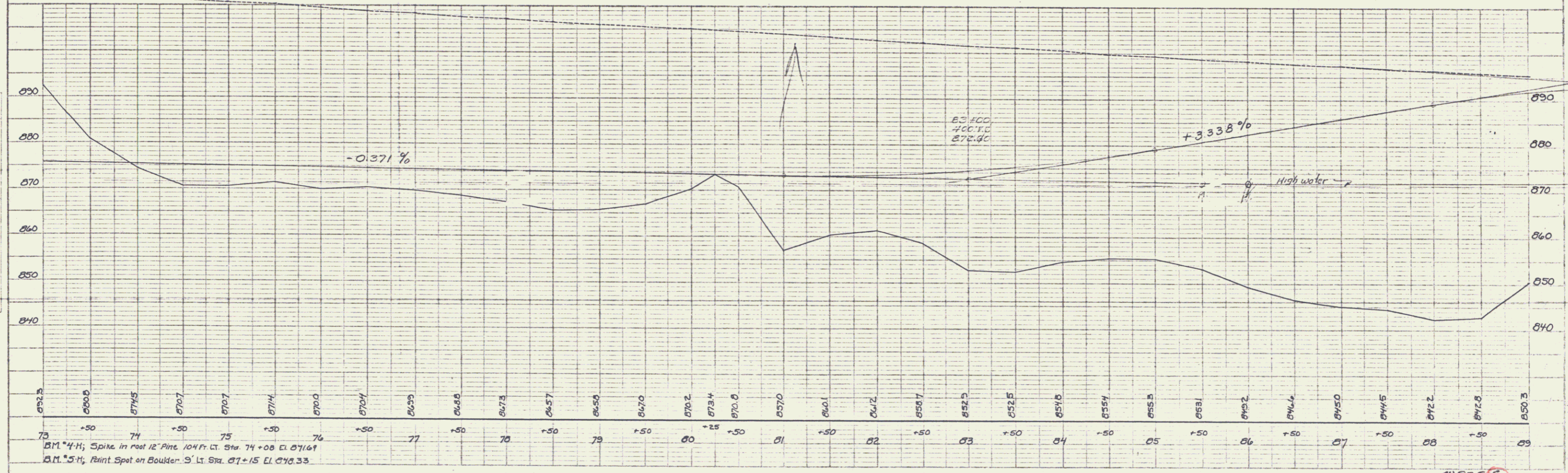
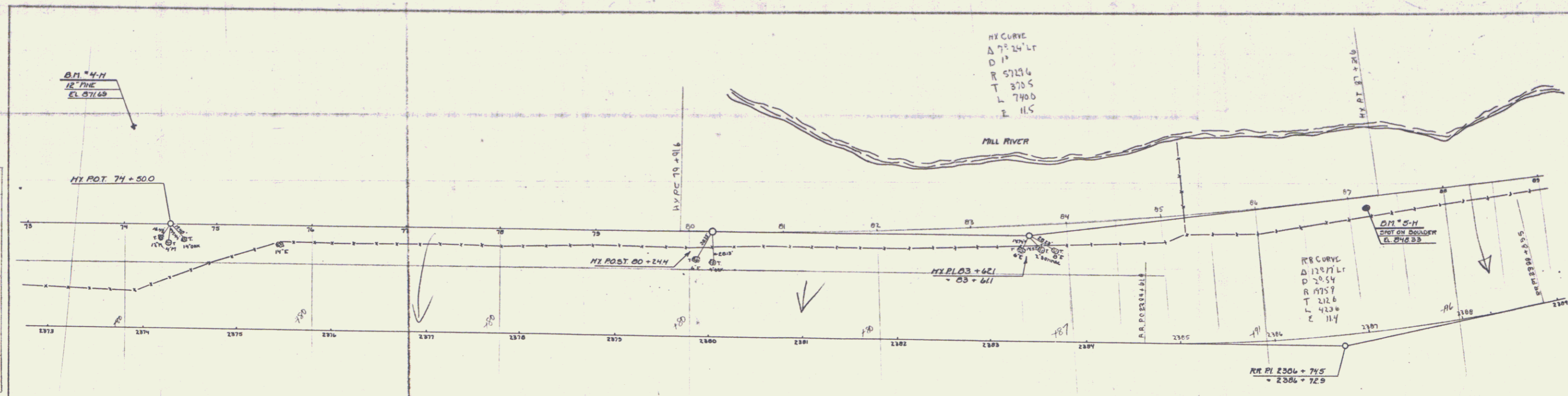
PROFILES  
 DATE  
 DRAWN BY  
 CHECKED BY  
 NO.



SHEET 4

PLAN  
 DRAWN BY: [Signature]  
 DATE: 7-31-35  
 CHECKED BY: [Signature]  
 DATE: 8-1-35  
 PROJECT NO.: 100-1000  
 SHEET NO.: 45

PROFILE  
 DRAWN BY: [Signature]  
 DATE: 7-31-35  
 CHECKED BY: [Signature]  
 DATE: 8-1-35  
 PROJECT NO.: 100-1000  
 SHEET NO.: 45

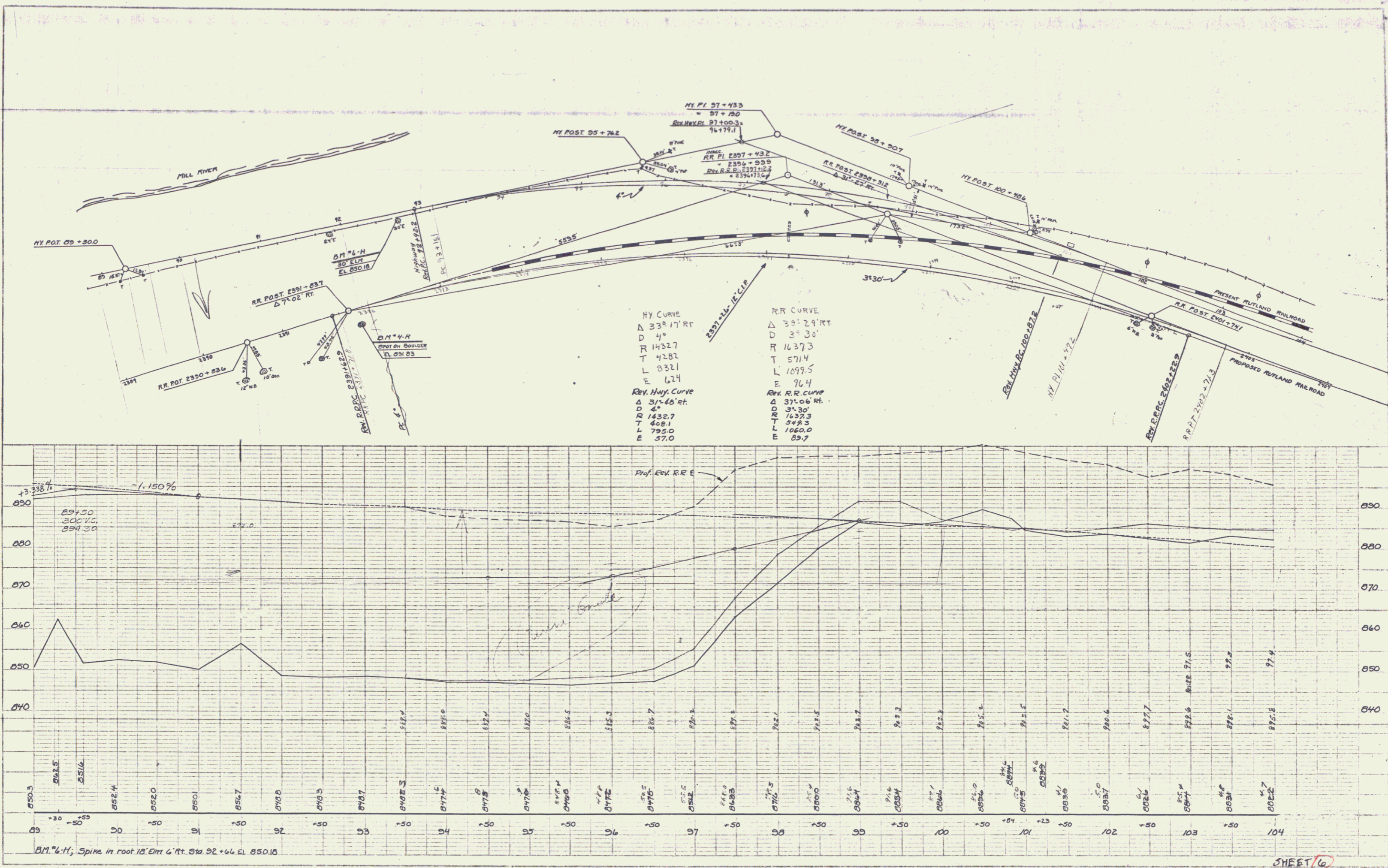


BM 4-H; Spike in root 12" Pine 104 Ft. Lt. Sta. 74 + 08 EL 871.61  
 BM 5-H; Paint Spot on Boulder. 9' Lt. Sta. 87 + 15 EL 876.33

SHEETS 110  
 45

PLAN  
 DATE: 9-35  
 DRAWN BY: LANTHE  
 CHECKED BY: [blank]  
 PROJECT: [blank]  
 SHEET: 11

PROFILE  
 DATE: 9-35  
 DRAWN BY: LANTHE  
 CHECKED BY: [blank]  
 PROJECT: [blank]  
 SHEET: 11



HY CURVE  
 $\Delta$  33° 17' RT  
 $D$  4"  
 $R$  1432.7  
 $T$  428.2  
 $L$  832.1  
 $E$  624  
 Rev. Hwy. Curve  
 $\Delta$  31° 46' RT  
 $D$  4"  
 $R$  1432.7  
 $T$  408.1  
 $L$  795.0  
 $E$  570

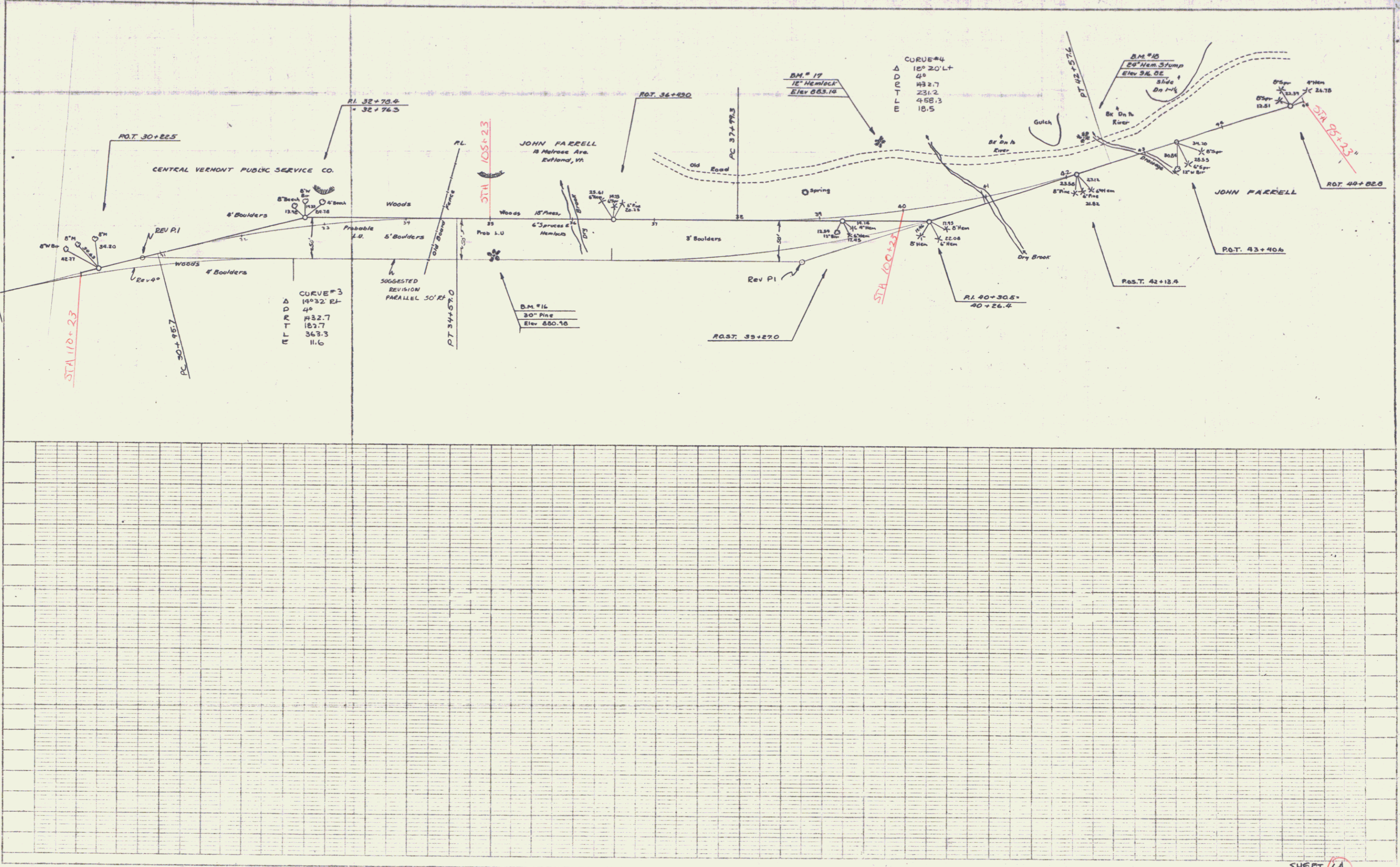
RR CURVE  
 $\Delta$  3° 30'  
 $D$  3"  
 $R$  1637.3  
 $T$  571.4  
 $L$  1099.5  
 $E$  764  
 Rev. R.R. Curve  
 $\Delta$  37° 06' RT  
 $D$  3"  
 $R$  1637.3  
 $T$  549.3  
 $L$  1060.0  
 $E$  89.7

B.M. 6-H, Spine in root 18' Elev 6' ft Sta 92+66 El. 850.18

SHEET 16  
 SHEET 110A  
 15  
 6

PLAN  
 REVISIONS  
 DATE  
 BY  
 CHECKED  
 DATE  
 BY

DATE  
 BY  
 CHECKED  
 DATE  
 BY



CURVE #3  
 Δ 14°32' 21"  
 L 48  
 H 32.7  
 T 183.7  
 S 363.3  
 I 11.6

CURVE #4  
 Δ 12°20' 14"  
 L 45  
 H 32.7  
 T 231.2  
 S 488.3  
 I 18.5

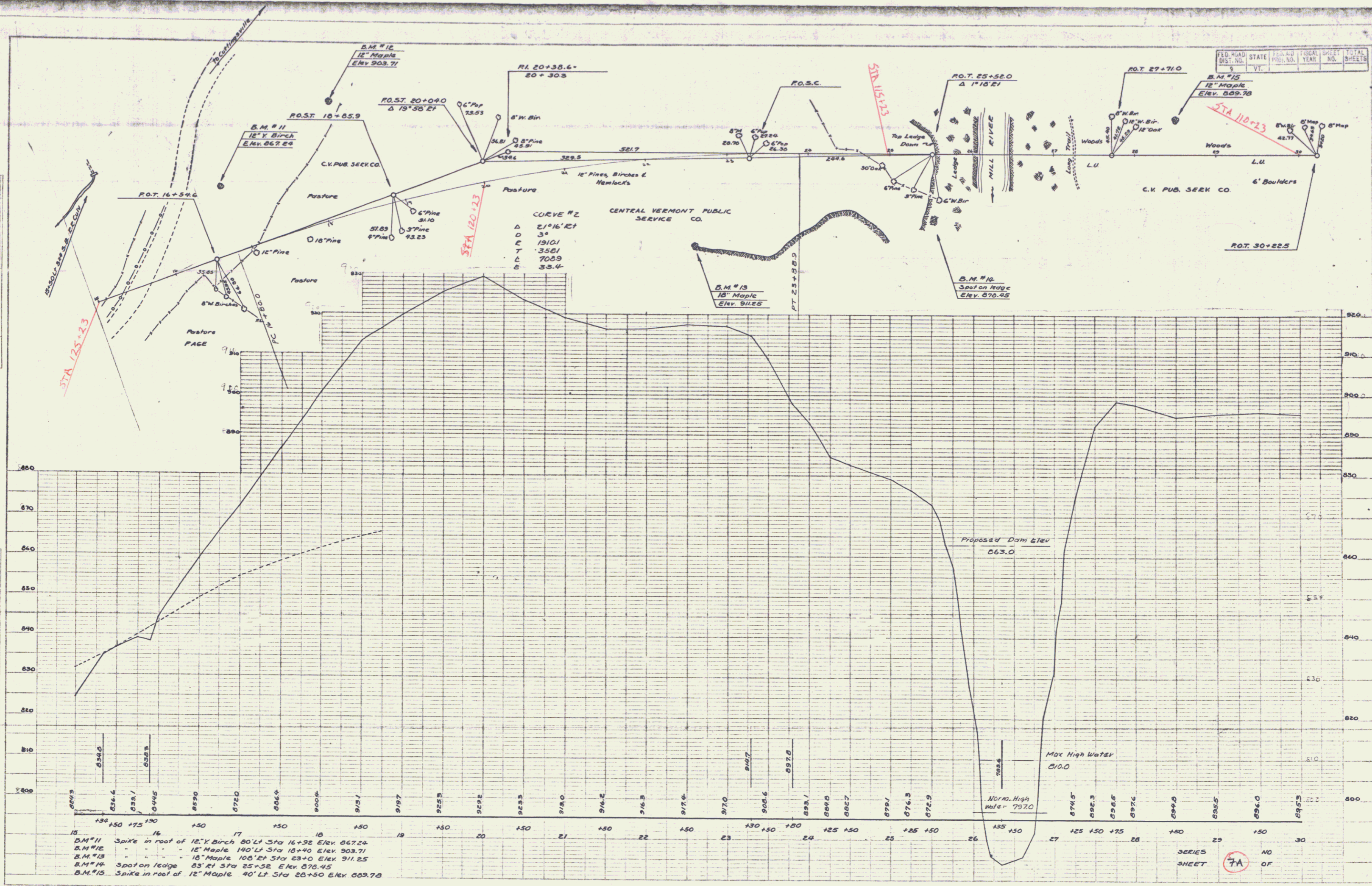
B.M. #16  
 20" Pine  
 Elev 880.90

B.M. #17  
 12" Hemlock  
 Elev 883.16

B.M. #18  
 20" Hem Spruce  
 Elev 816.02



FED. ROAD DIST. NO.	STATE	FED. AID PROJ. NO.	FISCAL YEAR	SHEET NO.	TOTAL SHEETS
5	VT.			1	3



PLAN  
 DATE: 10/15/53  
 DRAWN BY: [Signature]  
 CHECKED BY: [Signature]  
 NOTE: BOOK ALPHABETICALLY CHECKED.  
 NO. 10

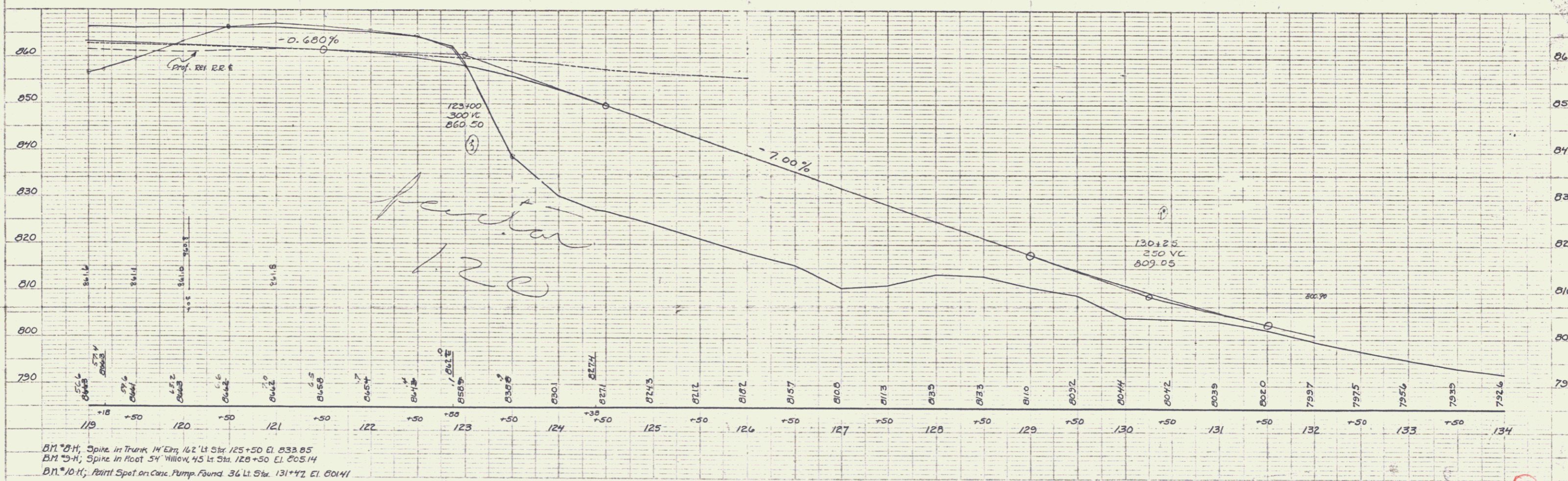
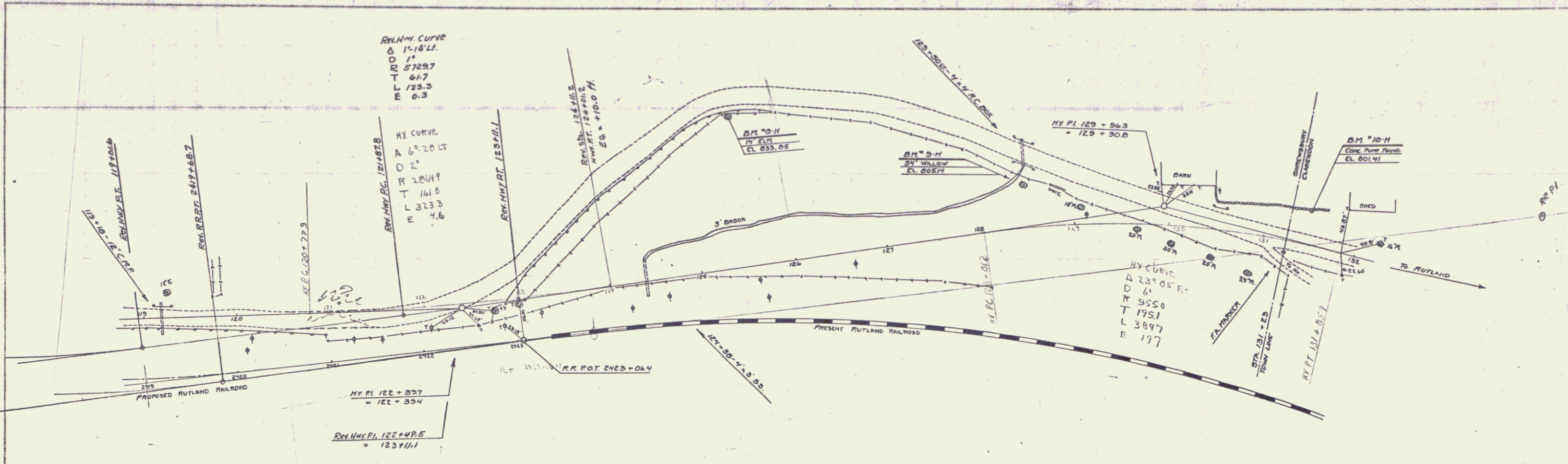
PROFILE  
 DATE: 10/15/53  
 DRAWN BY: [Signature]  
 CHECKED BY: [Signature]  
 NOTE: BOOK ALPHABETICALLY CHECKED.  
 NO. 10

15 B.M.#11 Spike in root of 12" X Birch 80' Lt Sta 16+32 Elev 867.24  
 16 B.M.#12 12" Maple 140' Lt Sta 18+40 Elev 903.71  
 17 B.M.#13 18" Maple 100' Lt Sta 23+0 Elev 911.25  
 18 B.M.#14 Spot on ledge 83' Rt Sta 25+32 Elev 876.45  
 19 B.M.#15 Spike in root of 12" Maple 40' Lt Sta 26+50 Elev 889.78

SERIES NO  
 SHEET 7A OF

PLAN SHEET NO. 3-35  
 DATE ANYTIME  
 DRAWN BY [unclear]  
 CHECKED BY [unclear]  
 TITLE [unclear]

PLAN SHEET NO. 3-35  
 DATE ANYTIME  
 DRAWN BY [unclear]  
 CHECKED BY [unclear]  
 TITLE [unclear]



SHEET 8  
 1174



