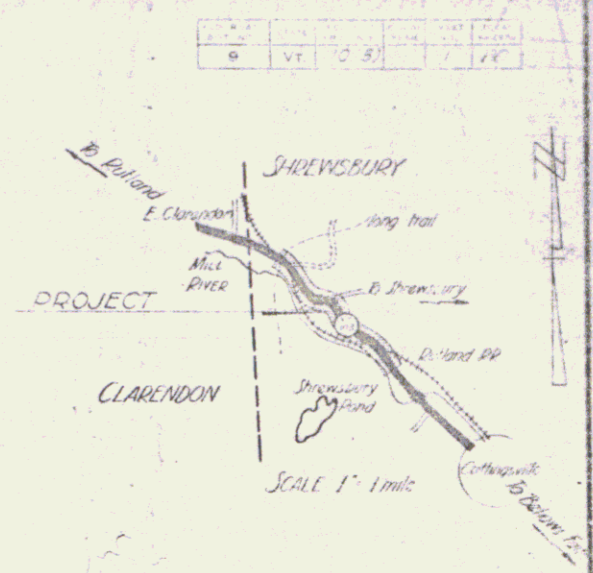


7

INDEX OF SHEETS

SHEET NO.	TITLE PAGE
1	TITLE PAGE
2	TYPICAL CROSS-SECTION OF IMPROVEMENT
3	BANKING AND WIDENING TABLES
4-13	PLAN AND PROFILE
14-16	RC BOX CULVERT STA 89+27
17	STANDARD STRUCTURE SHEET
18	SC-21 BOX CULVERT DETAILS
19	S 28 PIPE CULVERTS
20	S 30 GUARD RAIL
21	S 49-46 GUARD RAIL
22	S 51-49 GUARD RAIL
23	S 52-48 GUARD RAIL
24	S 30 A STANDARD UNDERDRAIN
25	S 40 BARRICADES, SIGNS & LIGHTS
26-60	S 41 TYPICAL GRADING CROSS SECTIONS

STATE OF VERMONT
 STATE HIGHWAY DEPARTMENT
 PLAN AND PROFILE OF PROPOSED
 STATE HIGHWAY
 FEDERAL PROJECT



STANDARD STRUCTURE SHEETS APPROVED BY THE CHIEF ENGINEER VERMONT STATE DEPARTMENT OF HIGHWAYS

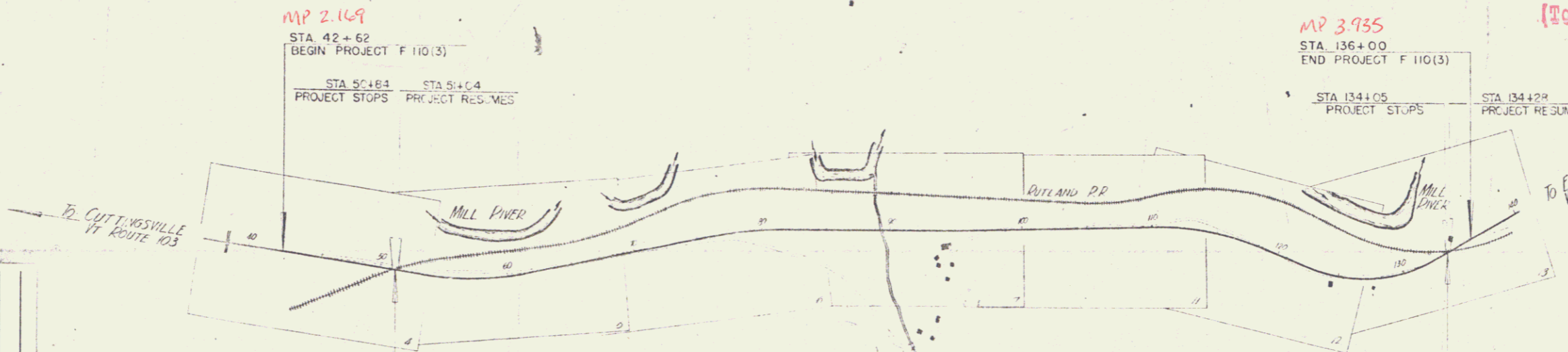
S 28	APRIL	26, 1941
S 30	NOV.	10, 1947
S 30A	APRIL	19, 1941
S 40	DEC.	18, 1945
S 49-46	MAY	13, 1946

TOWN OF SHREWSBURY
 VT. ROUTE 103

RUTLAND - BELLOWS FALLS ROAD

BEGINNING AT A POINT APPROXIMATELY 828 FEET
 SOUTHEASTERLY OF PRATT CROSSING ON VERMONT
 ROUTE 103 AND EXTENDING WESTERLY 9282.8 FEET.
 LENGTH OF PROJECT 9282.8 FT = 1.758 MILE

RIGHT-OF-WAY DIVISION
 TOWN FILE
 PERPETUAL
 Town of VT 103
 (To Be Returned To R.O.W. Division)



PROJECT NUMBER	LENGTH	YEAR	LOCATION
110(3)	1.758 MI.	1948	Shrewsbury, VT

GROUND ELEVATION
 GRADE ELEVATION

CURVE DATA

DEFLECTION ANGLE	D	TITLE	SCALE
DEGREE OF CURVE	D	TYPICAL	1" = 50'
RADIUS OF CURVE	R	PLAN	1" = 20'
TANGENT DISTANCE	T	PROFILE HORIZONTAL	1" = 50'
LENGTH OF CURVE	L	PROFILE VERTICAL	1" = 10'
EXTERNAL DISTANCE	E	CROSS SECTIONS	1" = 5'
POINT OF INTERSECTION	P		
POINT OF CURVE	P		
POINT OF TANGENT	P		
POINT ON TANGENT	P		

THESE PLANS ARE SUBJECT TO SUCH REVISIONS AS MAY BE REQUIRED BY THE PUBLIC ROADS ADMINISTRATION OR THE COMMISSIONER OF HIGHWAYS.
 CONSTRUCTION IS TO BE CARRIED ON IN ACCORDANCE WITH THE PLANS AND THE STANDARD ROAD AND BRIDGE SPECIFICATIONS OF 1936, AS APPROVED DECEMBER 4TH 1936, BY THE PUBLIC ROADS ADMINISTRATION, INCLUDING ALL SUBSEQUENT APPROVED REVISIONS AND SUCH REVISED SPECIFICATIONS AND SPECIAL PROVISIONS AS ARE SUBMITTED WITH THE PLANS.

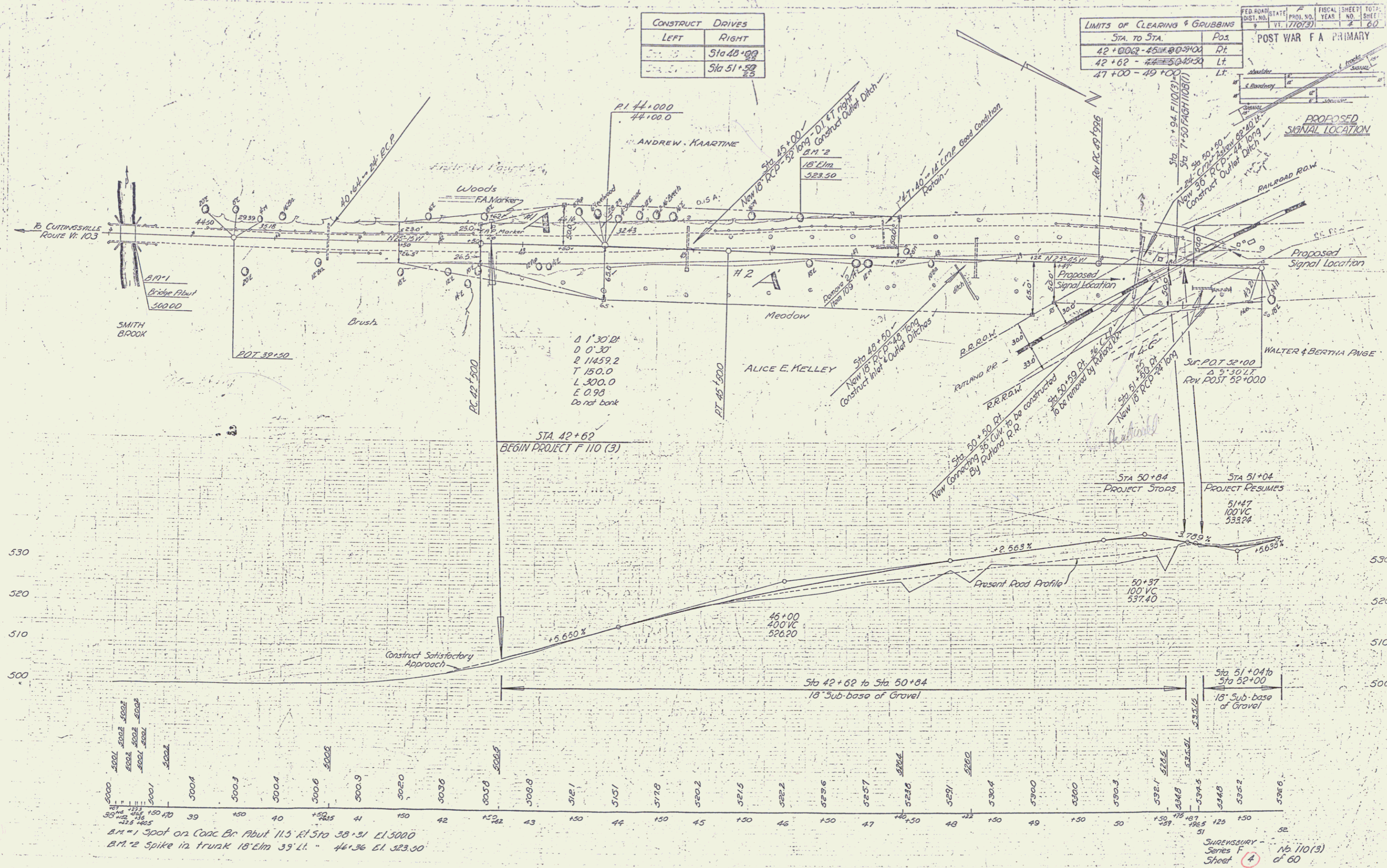
APPROVED: *[Signature]* HIGHWAY ENGINEER
 APPROVED: *[Signature]* PROJECT HIGHWAY COMMISSIONER
 SERIES F NO. 110(3) FILED
 SHEET 1 OF 6

Pin # 00R121
 Date 4/28/1948

8

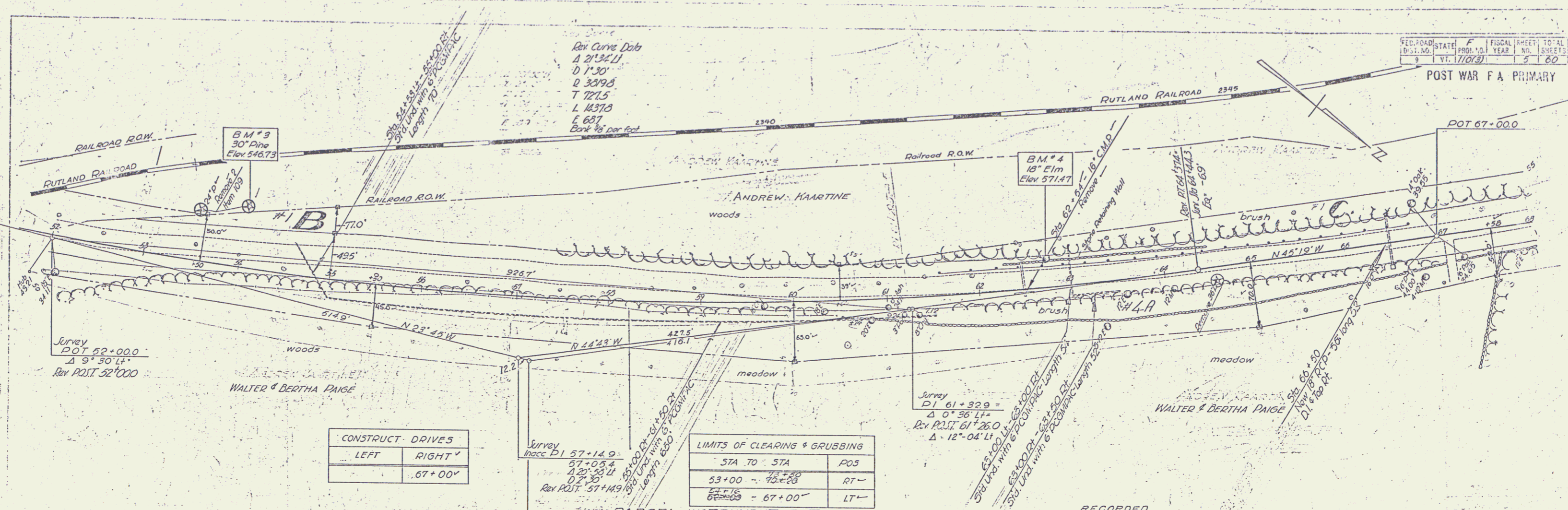
CONSTRUCT DRIVES	
LEFT	RIGHT
Sta 48+00	Sta 51+50
Sta 48+00	Sta 51+50

LIMITS OF CLEARING & GRUBBING		POST WAR F A PRIMARY
STA. TO STA.	Pos.	
42+00-45+00	Rt.	
42+62-47+00	Lt.	
47+00-49+00	Lt.	



Spot on Conc Br Abut 11.5 Rt Sta 38+31 Lt 5000
 Spot on trunk 18' Elm 39' Lt 46+36 El 523.50

SURESBURY
 Series F
 Sheet 4 of 60

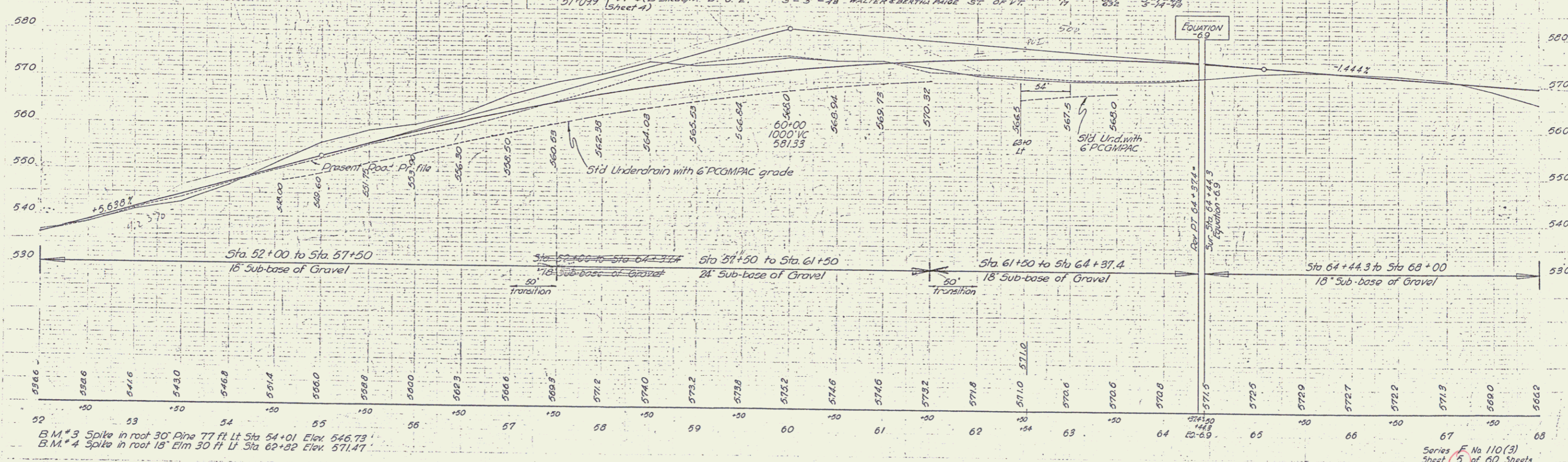


CONSTRUCT. DRIVES	
LEFT	RIGHT
	.67+00

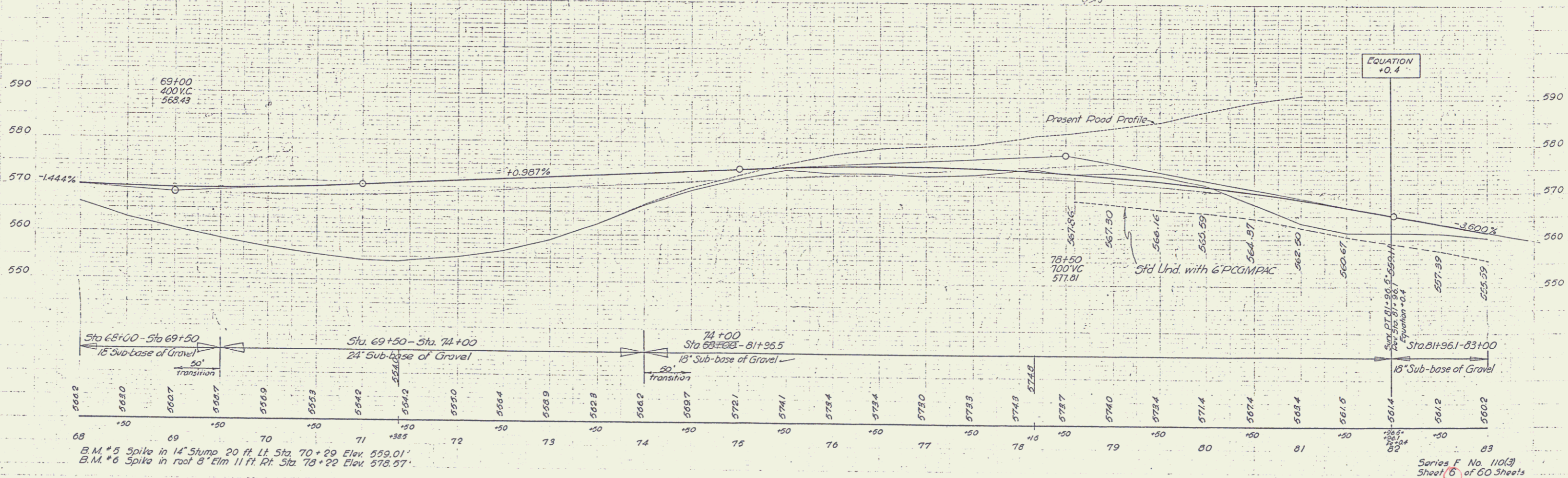
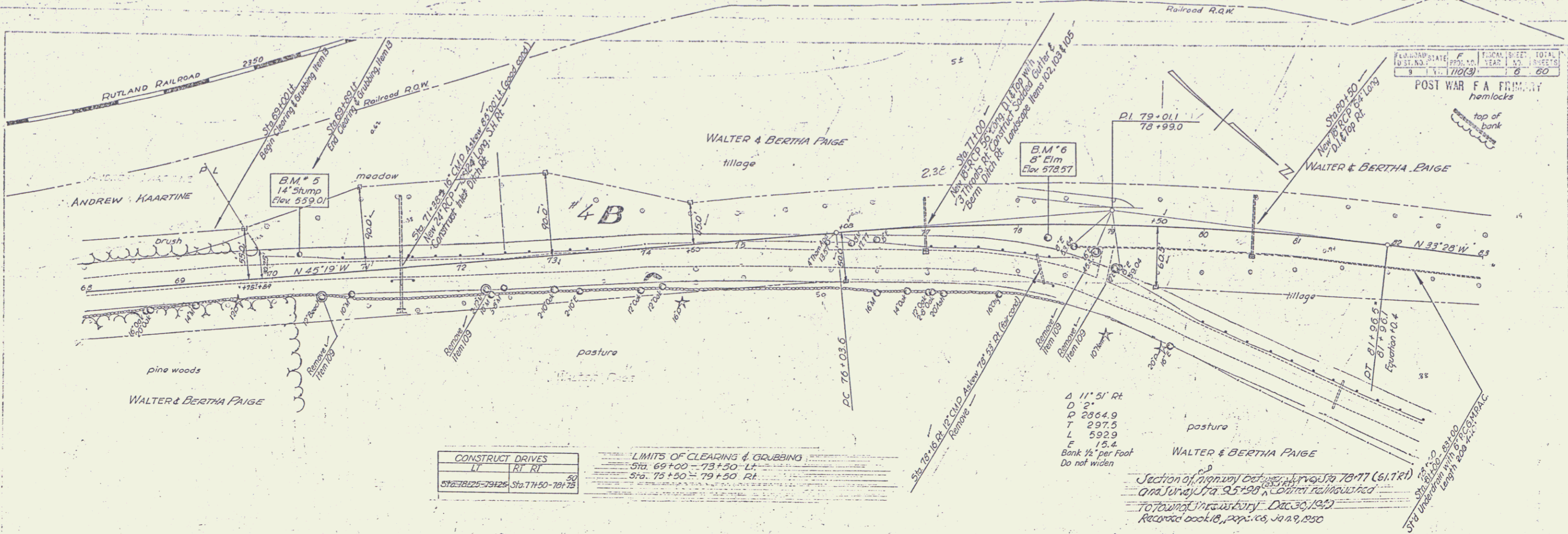
LIMITS OF CLEARING & GRUBBING		
STA TO STA	POS	
53+00 - 55+00	RT	-
57+00 - 67+00	LT	-

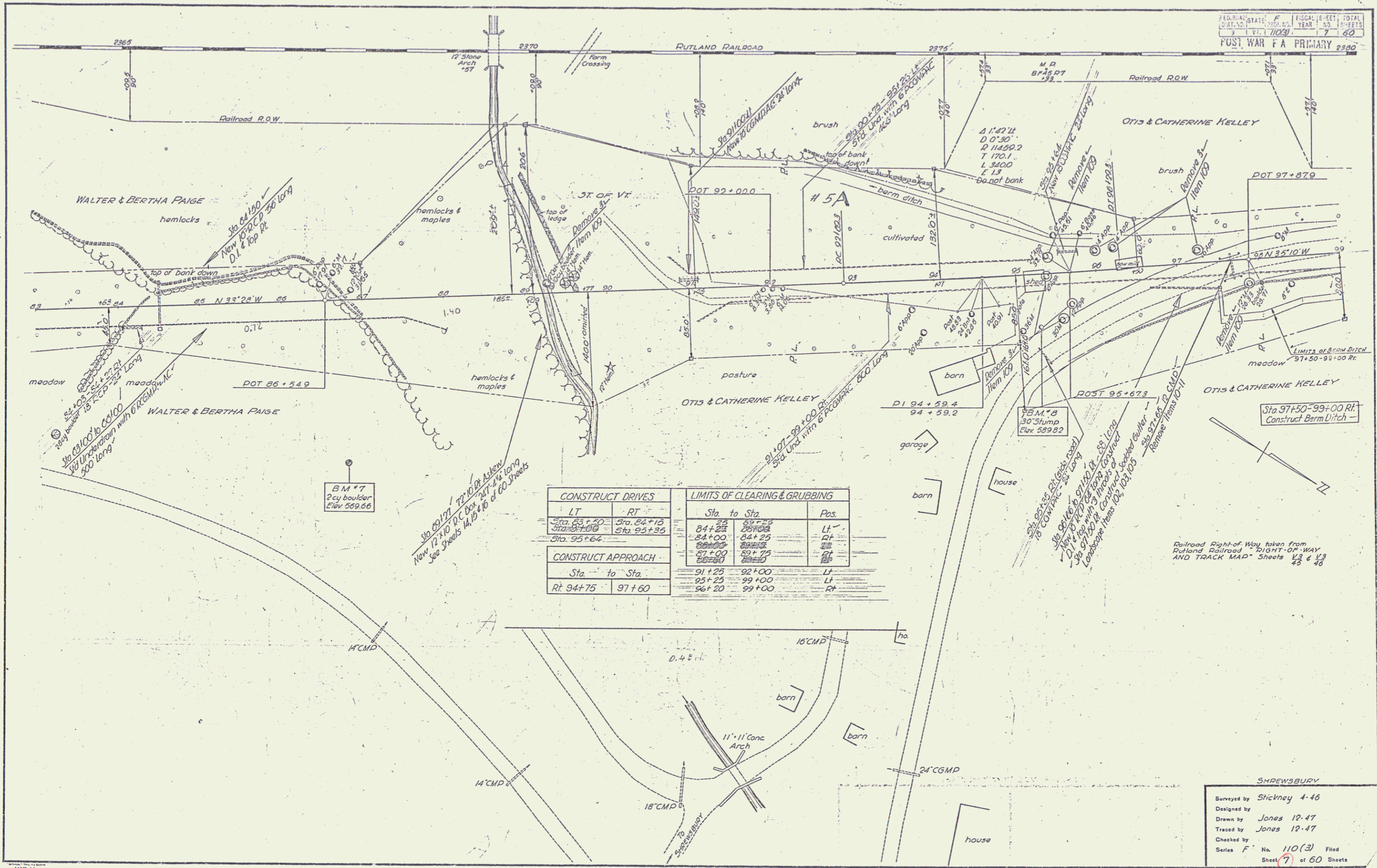
PARCEL INSTRUMENT DATE GRANTOR GRANTEE

INSTRUMENT	DATE	GRANTOR	GRANTEE	RECORDED BOOK	SHREWSBURY	REMARKS
51-099	3-23-48	WALTER & BERTHA PAIGE	ANDREW MARTINE	17	622	3-1-48
51-171	4-28-48	ANDREW MARTINE	ST. OF VT.	17	622	3-1-48
51-099	3-23-48	WALTER & BERTHA PAIGE	ST. OF VT.	17	622	3-1-48



B.M. #3 Spike in root 30' Pine 77 ft Lt Sta 54+01 Elev. 546.73
 B.M. #4 Spike in root 18' Elm 30 ft Lt Sta 62+02 Elev. 571.47





CONSTRUCT DRIVES		LIMITS OF CLEARING & GRUBBING	
LT	RT	Sta. to Sta.	Pos.
Sta. 83+50	Sta. 84+15	84+25	LT
Sta. 84+00	Sta. 95+35	84+00	RT
Sta. 95+64		86+00	RT
CONSTRUCT APPROACH		87+00	RT
Sta. to Sta.		88+00	RT
Rt. 94+75	97+60	91+25	LT
		95+25	LT
		96+20	RT
		99+00	RT

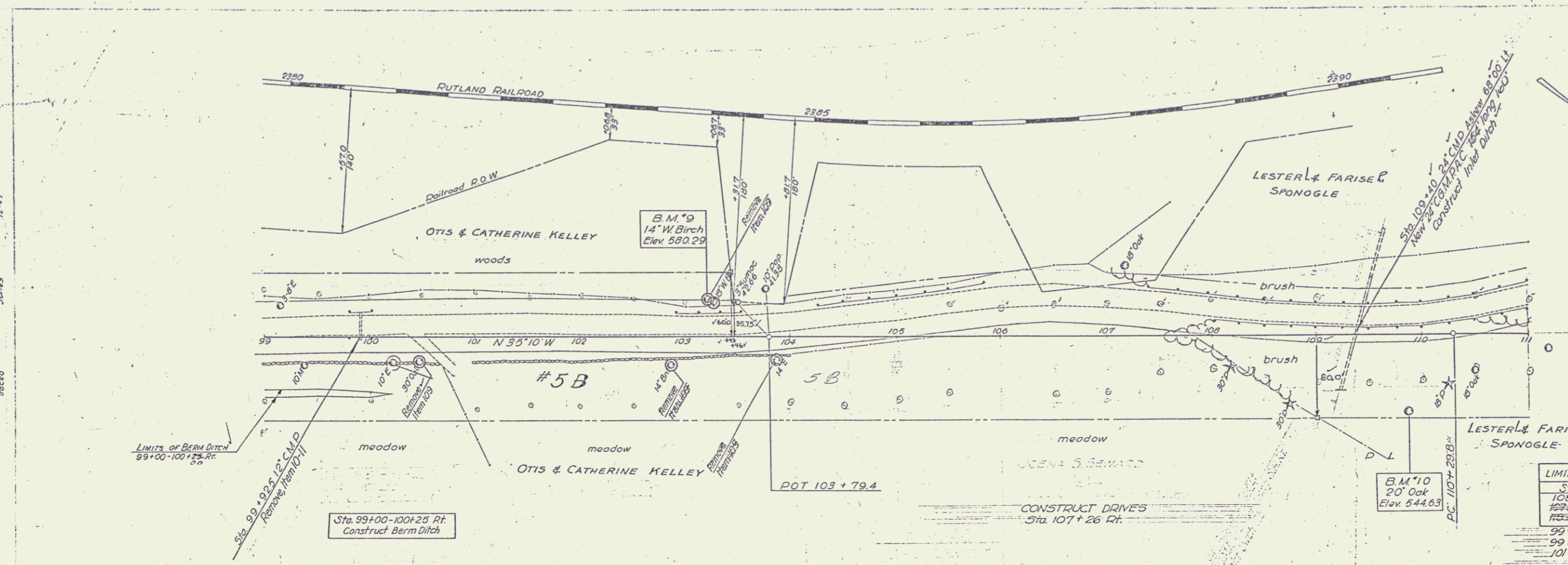
BM * 7
 2 cy boulder
 Elev 569.66

Railroad Right of Way taken from
 Rutland Railroad - RIGHT-OF-WAY
 AND TRACK MAP - Sheets 43 & 46

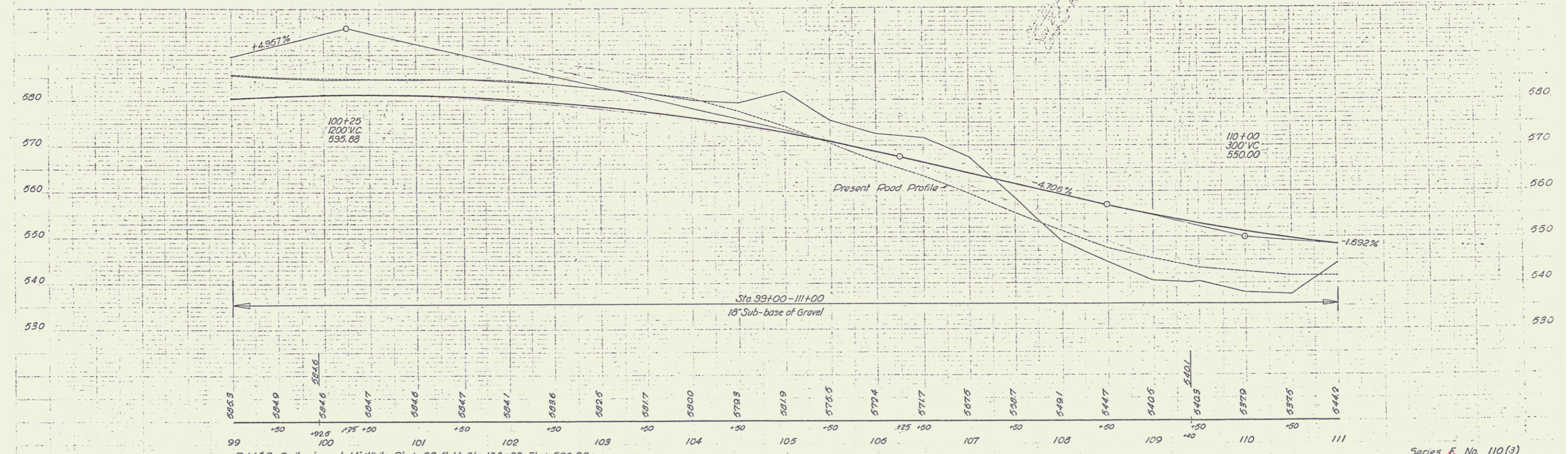
SHREWSBURY
 Surveyed by Slickney 4-46
 Designed by Jones 12-47
 Drawn by Jones 12-47
 Traced by Jones 12-47
 Checked by Jones 12-47
 Series F No. 110(3) Filed
 Sheet 7 of 60 Sheets

FD. ROAD STATE	F	FISCAL YEAR	1947	TOTAL SHEETS	60
PROJECT NO.	110(3)	DATE	11		60

POST WAR F.A. PRIMARY

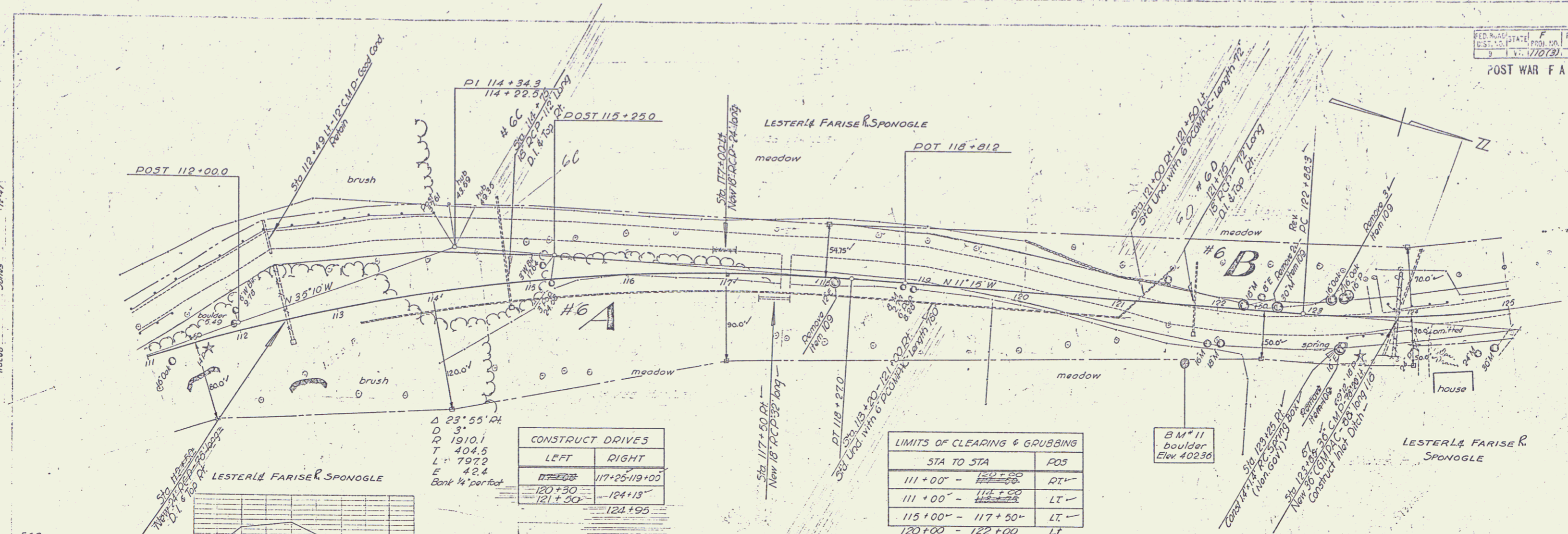


Sta. to Sta.	Pos.
99+00 - 100+00	LT
99+00 - 100+00	RT
101+00 - 111+00	RT



B.M. #9 Spike in root 14" White Birch 32 ft. Lt. Sta. 103+20 Elev. 580.29
 B.M. #10 Spike in root 20" Oak 69 ft. Rt. Sta. 109+87 Elev. 544.63

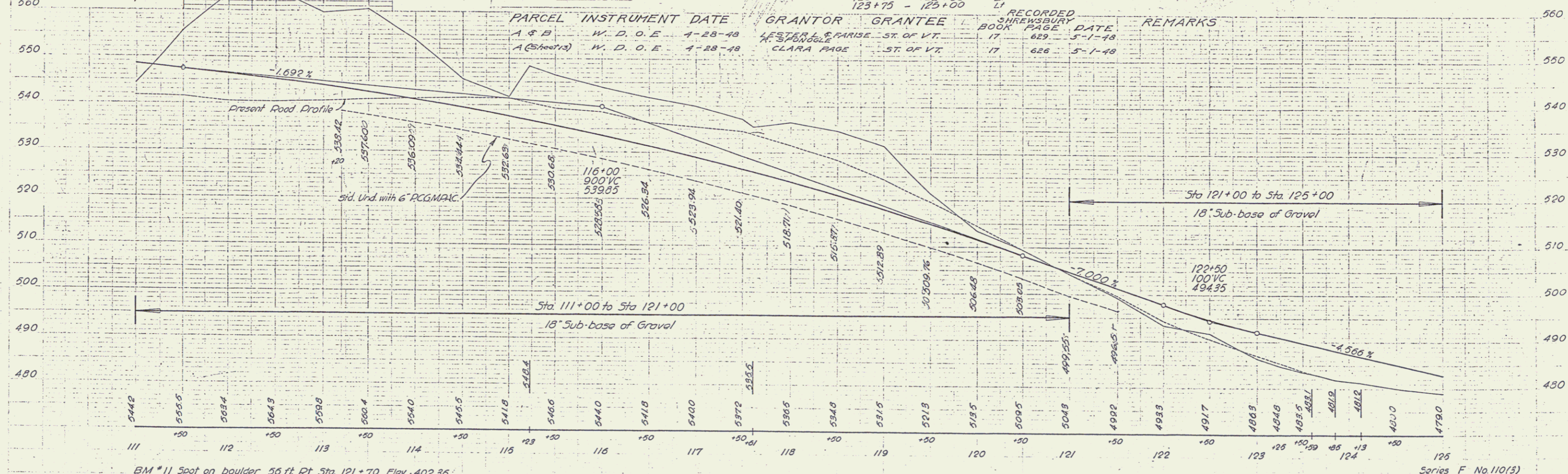
Series F. No. 110(3)
 Sheet 11 of 60 Sheets
 SHREWSBURY



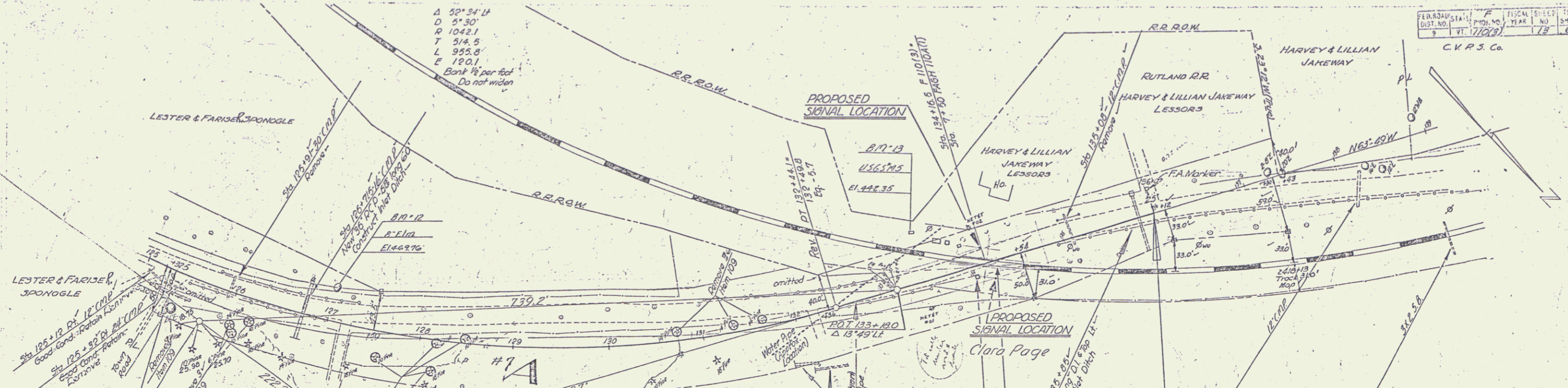
CONSTRUCT DRIVES	
LEFT	RIGHT
117+00	117+25-119+00
120+30	124+13
121+50	124+95

LIMITS OF CLEARING & GRUBBING	
STA TO STA	POS
111+00 - 117+50	RT
111+00 - 114+50	LT
115+00 - 117+50	LT
120+00 - 122+00	LT
123+75 - 125+00	LT

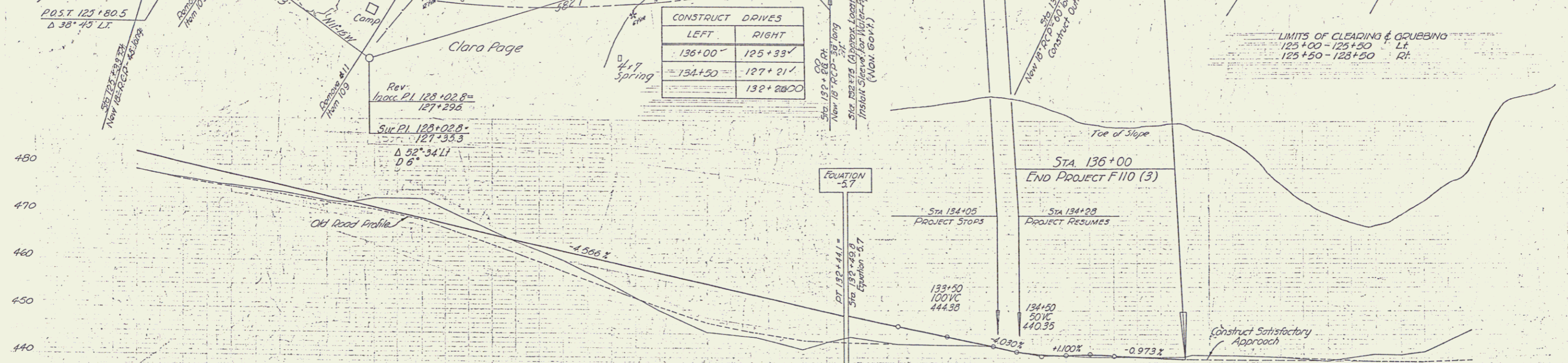
PARCEL	INSTRUMENT DATE	GRANTOR	GRANTEE	RECORDED	REMARKS
A & B	W. D. O. E. 4-28-48	LESTER & FARISE - ST. OF VT.	CLARA PAGE - ST. OF VT.	BOOK PAGE DATE	
A (Sheet 13)	W. D. O. E. 4-28-48	M. SPONGLE		17 629 5-1-48	
				17 626 5-1-48	



BM #11 Spot on boulder 56 ft Pt. Sta. 121+70 Elev. 402.35'



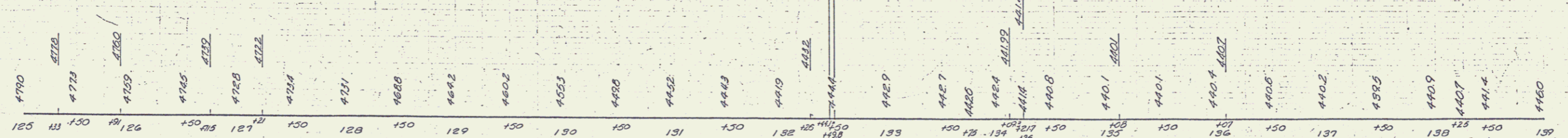
CONSTRUCT DRIVES	
LEFT	RIGHT
136+00	125+33
134+50	127+21
	132+26.00



Sta 125+00 to Sta 132+44.1
18" Sub-base of Gravel

Sta 132+49.8 to Sta 134+05
18" Sub-base of Gravel

Sta 134+28 to Sta 136+00
18" Sub-base of Gravel



BM 72 S.I.T. 8' I.I.M. 4 1/2" LT. Sta. 127+03 EL 469.76
 B.M. 13 U.S.C. + G.S. B.M. M-5 (1927) 53" LT. Sta. 133+49 EL 442.35

SUNNYSBURG
 Sheet 13 of 60