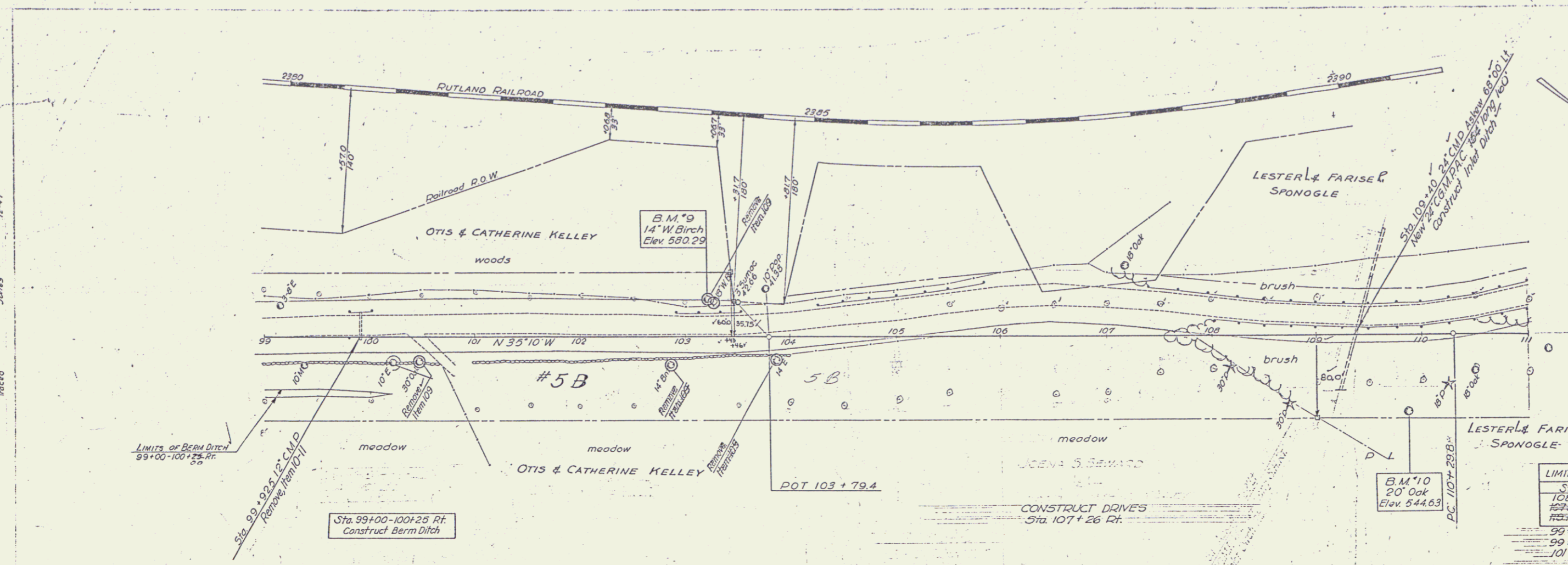
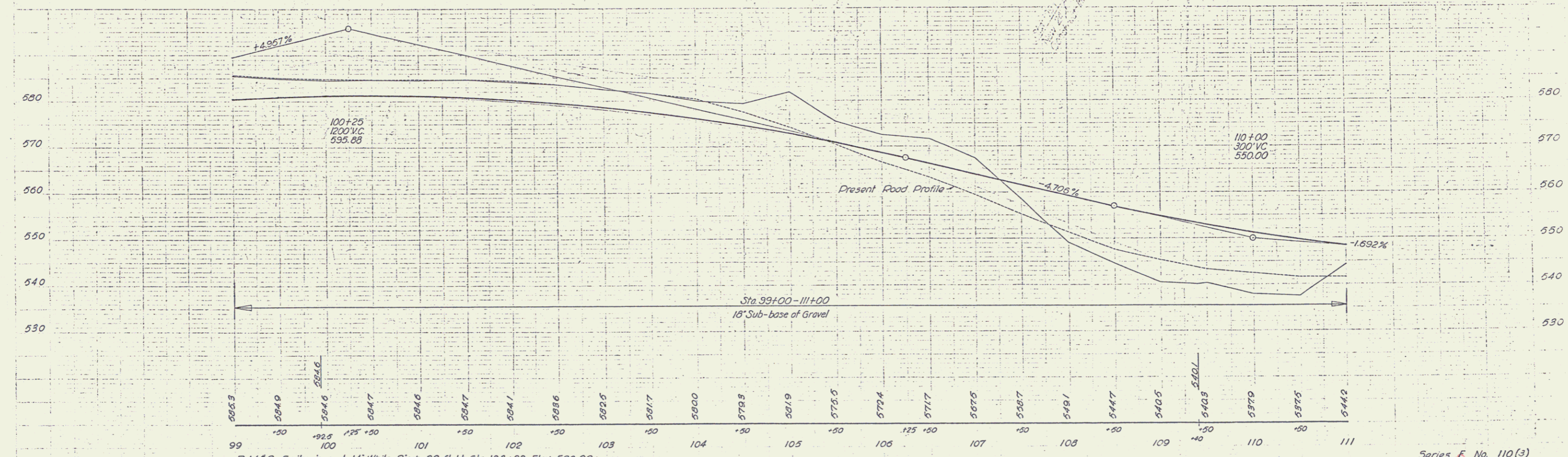


PROJECT	POST WAR F.A. PRIMARY
DATE	11/60
SHEET	60



Sta. to Sta.	Pos.
99+00 - 100+00	LT
99+00 - 100+00	RT
101+00 - 111+00	RT



B.M. *9 Spike in root 14" White Birch 32 ft. Lt. Sta. 103+20 Elev. 580.29
 B.M. *10 Spike in root 20" Oak 69 ft. Rt. Sta. 109+87 Elev. 544.63

Series F. No. 110(3)
 Sheet 11 of 60 Sheets
 SHREWSBURY