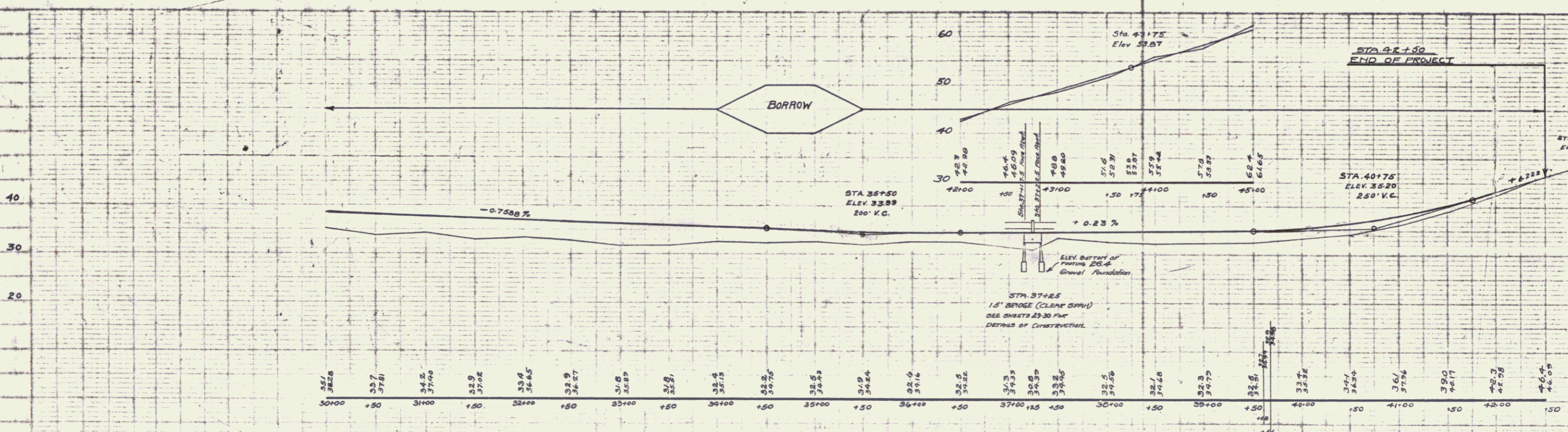
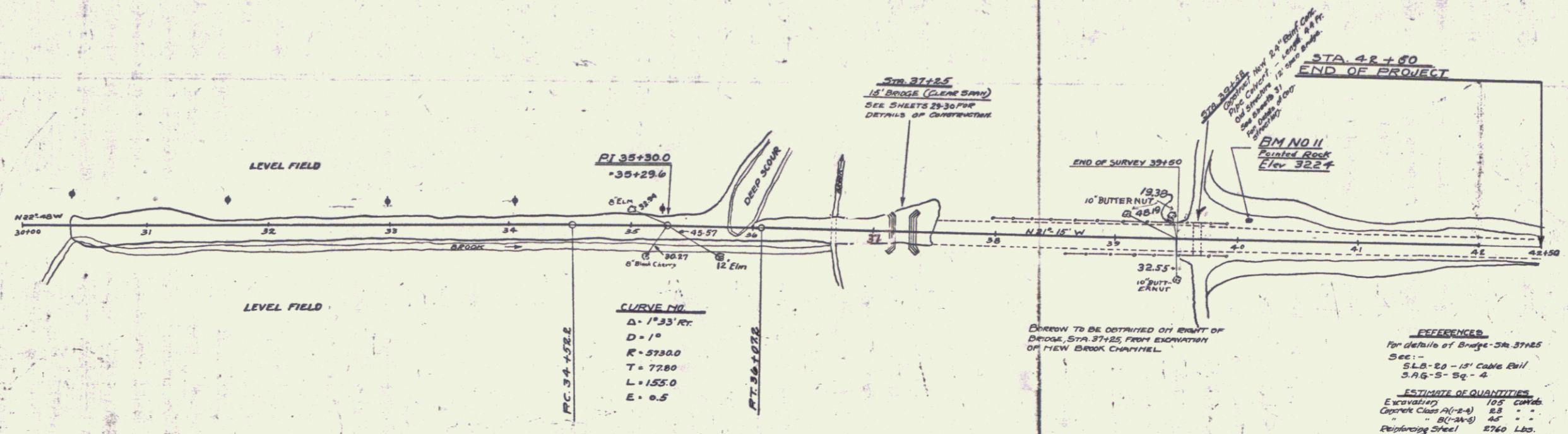


**CABLE GUARD RAIL REQUIRED**  
**DIRT LEET**  
 Sta. 36+22 to Sta. 34+94 Length 78 ft  
 " 37+04 " " 41+44 " 440 ft  
**DIRT RIGHT**  
 Sta. 35+42 to Sta. 36+98 Length 156 ft  
 " 37+06 " " 41+44 " 438 ft

**NEW CULVERTS REQUIRED**  
 5m 39+58 24" Rupt. Clay Pipe Culv. 126 ft  
 Cooper's Class (A)-(2-4) 2 1/2' diam.  
 Requiring Steel

FED. ROAD DIST. NO. 118 A 1926 17 6-7

PUTNAM  
ADWOOD



BM No 10 18" Elm 30' N. of Tel pole No 1634 Elev 36.90  
 BM No 11 25' S. of Tel pole No 1640 Pointed Rock at Foot of Slope Elev 32.24  
 BM No 12 E. Side Rd Rock in Slope at base of 4" Black Cherry at gravel hole Elev 54.44

SERIES F No 118 A  
 SHEET 11 OF 64

110