

**WOOD GUARD RAIL REQUIRED**

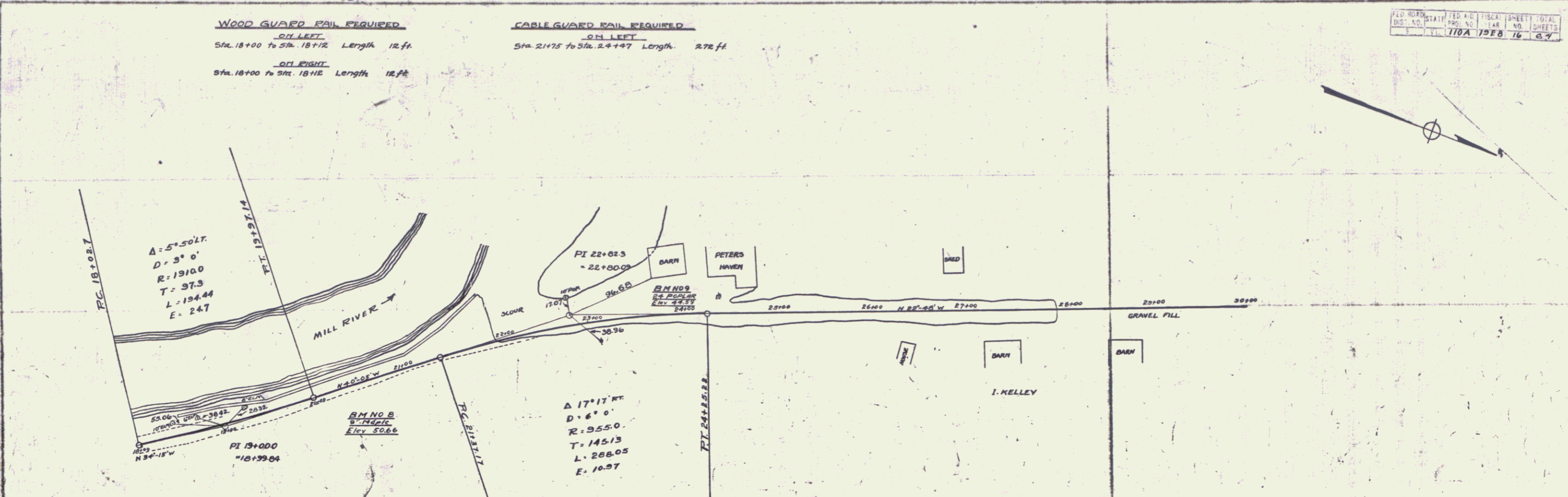
ON LEFT  
 Sta. 18+00 to Sta. 18+12 Length 12 ft

ON RIGHT  
 Sta. 18+00 to Sta. 18+12 Length 12 ft

**CABLE GUARD RAIL REQUIRED**

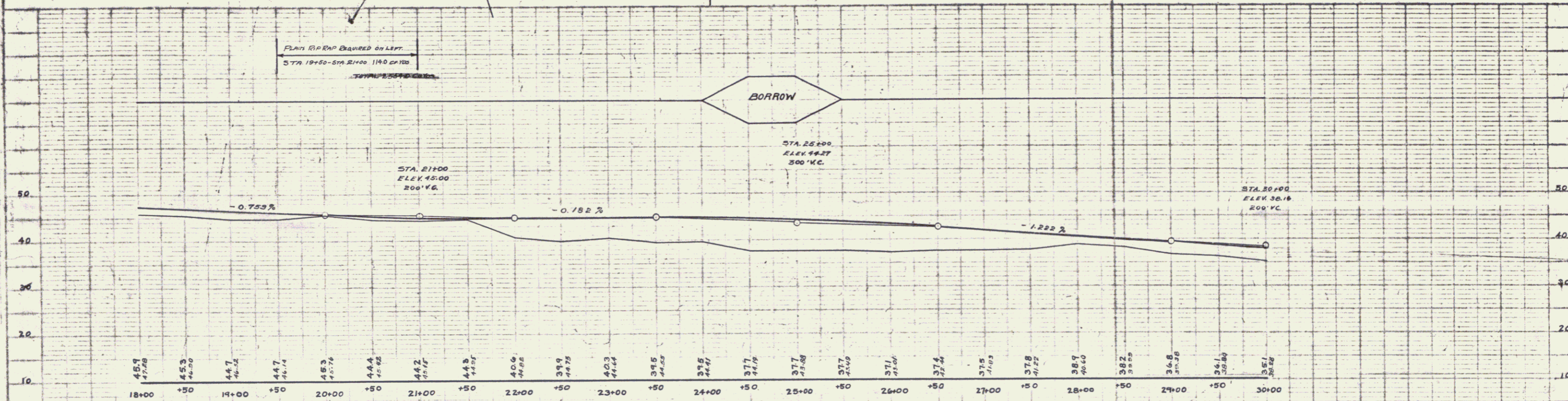
ON LEFT  
 Sta. 2+175 to Sta. 2+447 Length 272 ft

PLAN  
 170A  
 1928  
 16



Plain Road Required on Left  
 Sta. 18+50 to Sta. 21+00 1140' or 1100'

PROFILE  
 170A  
 1928  
 16



B.M. NO 8 Back Side of 3" Maple 35' South of Curve Sign Elev. 50.66  
 B.M. NO 9 24" Poplar front of Peters Inn Elev. 44.59

SERIES F No. 110A  
 SHEET 16 OF 67