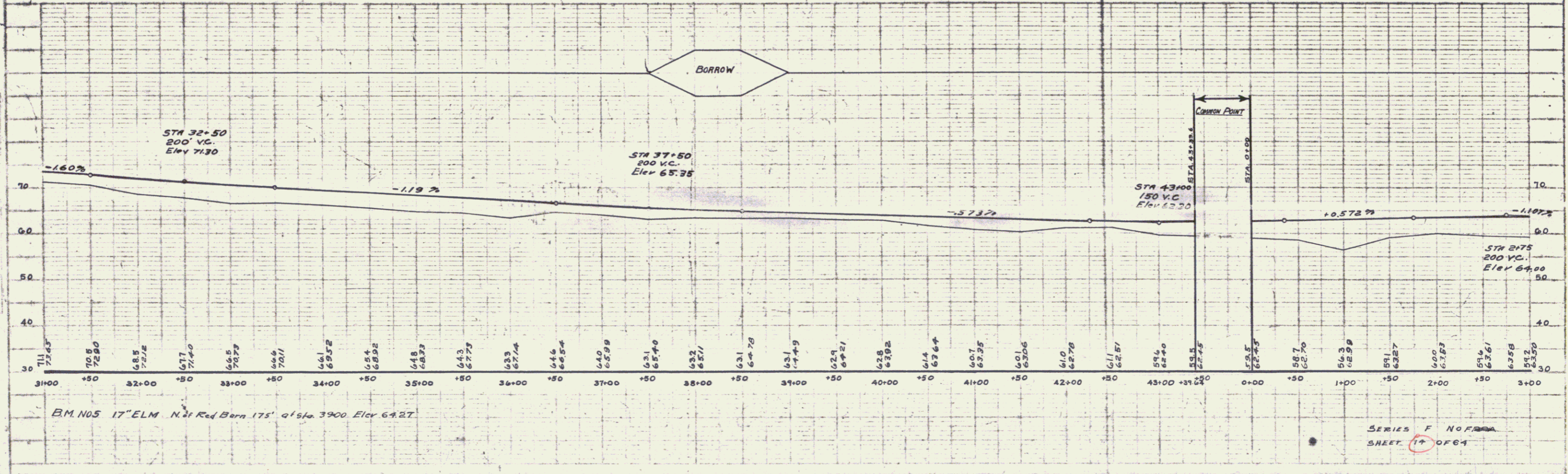
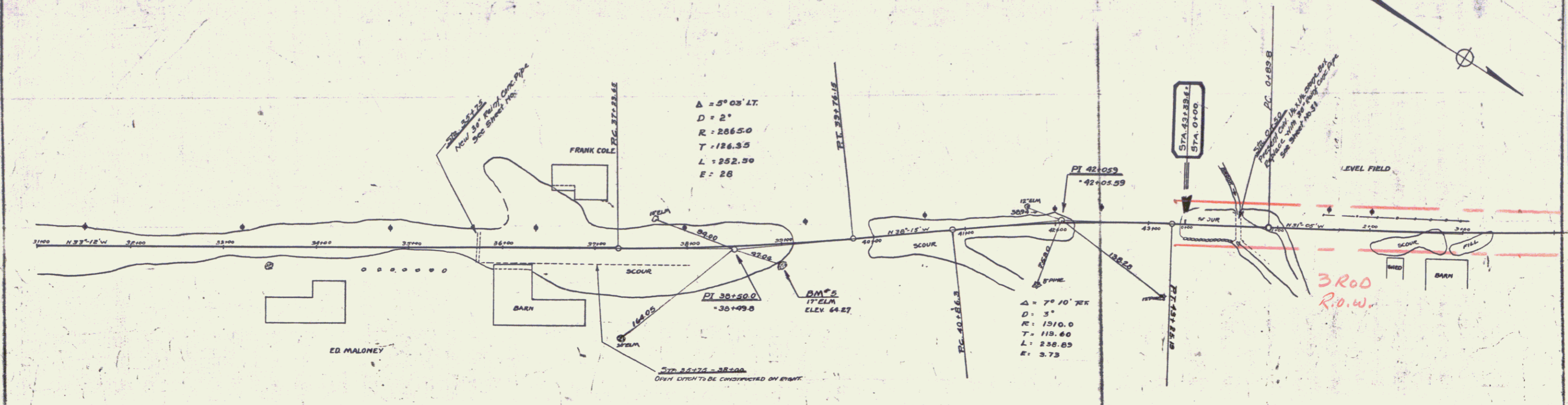


**WOOD GUARD RAIL REQUIRED**  
**ON LEFT**  
 Sta. 35+63 to Sta. 35+87 Length 24ft  
**ON RIGHT**  
 Sta. 35+63 to Sta. 35+87 Length 24ft

**CABLE GUARD RAIL REQUIRED**  
**ON LEFT**  
 Sta. 0+38 to Sta. 1+54 Length 116ft  
**ON RIGHT**  
 Sta. 43+08 to Sta. 3+00 Length 332ft

**NEW CULVERTS REQUIRED**  
 Sta. 35+75 30" Reinf. Conc. Pipe Culvert  
 Concrete Class A (1-2-4)  
 Reinforcing Steel 32 ft  
 38 Cr. yds.  
 58 lbs.  
 Sta. 0+50 30" Reinf. Conc. Pipe Culvert  
 Concrete Class A (1-2-4)  
 Reinforcing Steel 32 ft  
 38 Cr. yds.  
 58 lbs.

FED. ROAD DIST. NO. STATE PROJ. NO. COUNTY NO. DATE  
 100 100 100 100  
 ERBA 1988 14 69



SERIES F NO. 1000  
 SHEET 17 OF 64