

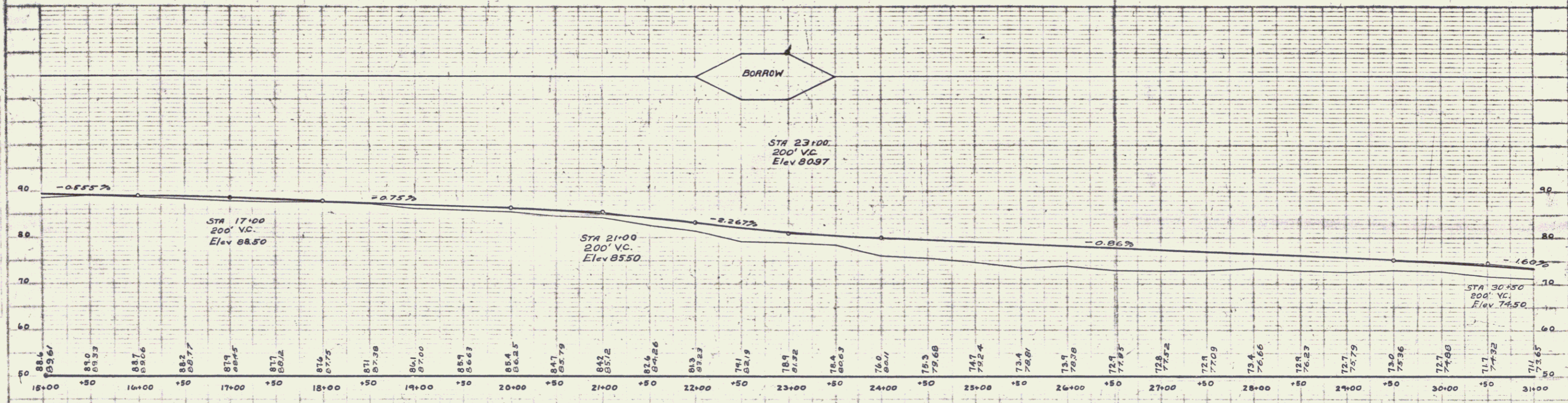
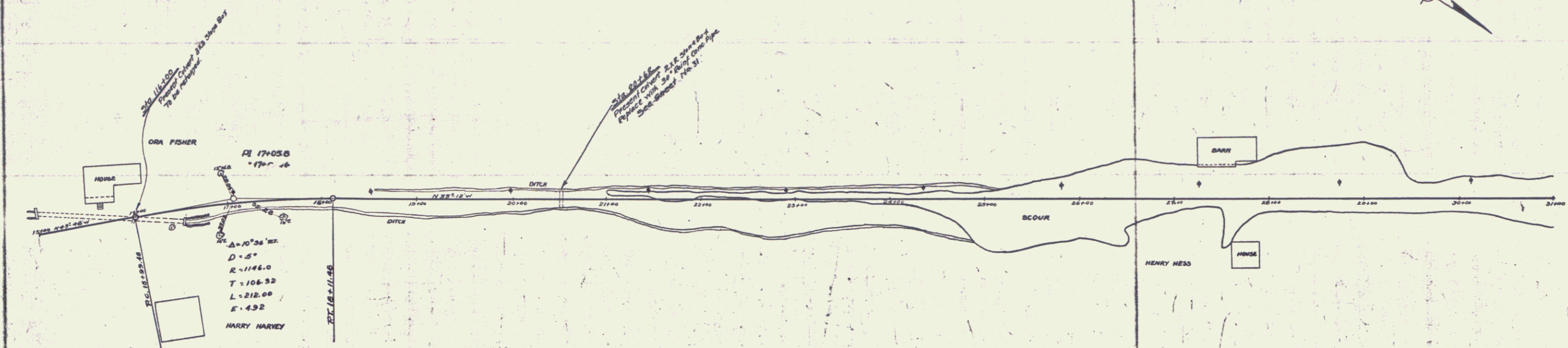
PUTMAN
A.D. WOOD

PUTMAN
A.D. WOOD

WOOD GUARD RAIL REQUIRED
ON LEFT
 Sta. 20+50 to Sta. 20+74 Length 24 ft
ON RIGHT
 Sta. 20+50 to Sta. 20+74 Length 24 ft

NEW CULVERTS REQUIRED
 Sta. 20+62 30' Rein. Conc. Pipe Culvert
 Concrete Class A (1-2-4)
 Reinforcing Steel
 32 ft
 35 Cracks
 58 lbs.

110A 132B 15 67



BM NO 3 Top of Rock Base of 6" local Tel. pole Elev 88.65
 BM NO 4 N.E. of Tel. pole no 1597 E. side of Road 3' Rock 20' N. of 4" apple Tree Elev 75.08

SERIES F 110.110-A
 SHEET 13 OF 67