

INDEX OF SHEETS			
SHEET NO.	TITLE PAGE	IMPROVEMENT (GRAVEL)	
1	TYPICAL CROSS-SECTION		
2	PLAN AND PROFILE STA. 0 TO STA. 14		
3	30		
4	45		
5	59		
6	75		
7	88		
8	100		
9	114		
10	128		
11	15	STA 129+10.0 - STA 1+00	
12	31		
13	18		
14	30		
15	42+30		
16			
17			
18-21	STA 76+45		
22-24	STA 9+65-6+67.41		
25-28	STA 9+98-11+48		
29-30	STA 37+25		
31-33	STANDARD STRUCTURED		
34-64	CROSS SECTIONS		

FED. ROAD DIST. NO.	STATE	FED. AID PROJ. NO.	FISCAL YEAR	SHEET NO.	TOTAL SHEETS
9	VT.	110A	1928	7	64

STATE OF VERMONT  
STATE HIGHWAY DEPARTMENT

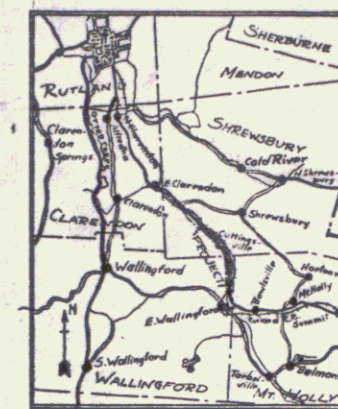
PLAN AND PROFILE OF PROPOSED  
STATE HIGHWAY  
FEDERAL AID PROJECT

TOWNS OF WALLINGFORD-SHREWSBURY  
BELLOWS FALLS-RUTLAND ROAD

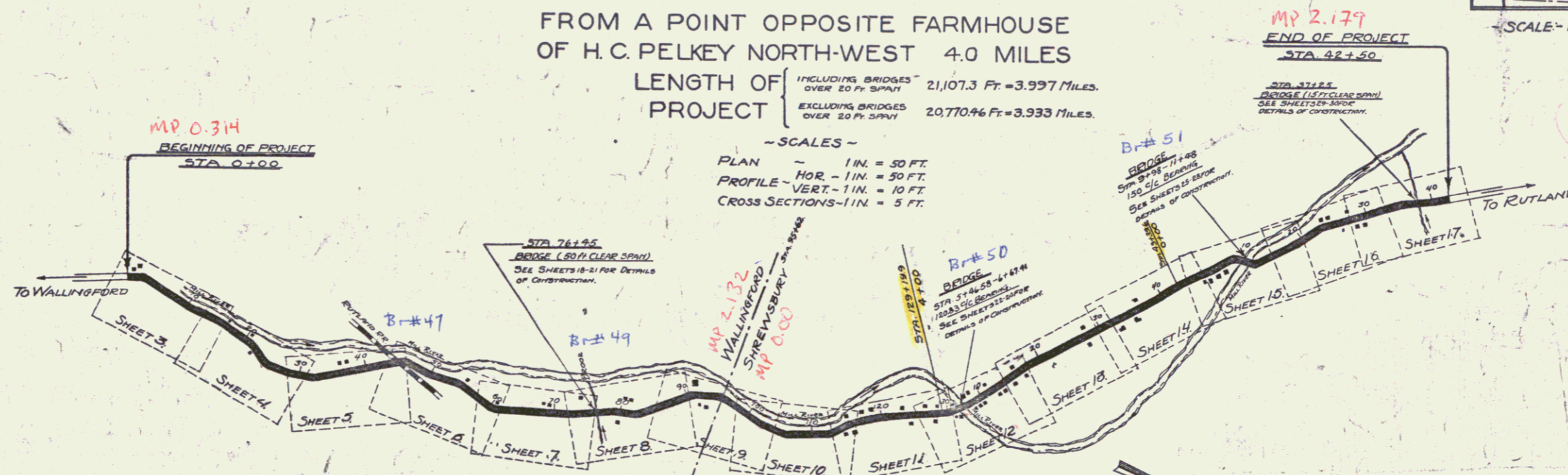
FROM A POINT OPPOSITE FARMHOUSE  
OF H. C. PELKEY NORTH-WEST 4.0 MILES

LENGTH OF PROJECT  
INCLUDING BRIDGES OVER 20 FT. SPAN 21,107.3 Ft. = 3.997 Miles.  
EXCLUDING BRIDGES OVER 20 FT. SPAN 20,770.46 Ft. = 3.933 Miles.

SCALES -  
PLAN - 1 IN. = 50 FT.  
PROFILE - HOR. - 1 IN. = 50 FT.  
VERT. - 1 IN. = 10 FT.  
CROSS SECTIONS - 1 IN. = 5 FT.



SCALE - 1 INCH = 4 MILES



RIGHT-OF-WAY DIVISION  
TOWN FILE  
PERPETUAL  
Town of WALLINGFORD  
(To Be Returned To R.O.W. Division)

THE LINE AND CROSS SECTIONS FOR THIS PROJECT WERE TAKEN DURING THE WINTER AND BEFORE ANY TEMPORARY REPAIR WAS DONE. QUANTITIES WILL BE DEPENDENT ON NEW CROSS SECTIONS TAKEN DURING STARTING OUT OF PROJECT.

CONVENTIONAL SIGNS	
COUNTY LINE	GROUND ELEVATION
TOWN LINE	FENCE LINE
STONE WALL	UNFENCED PROPERTY
GUARD RAIL	RAILROAD
TRAVELED WAY	RETAINING WALL
CULVERT	CENTER LINE
DROP INLET	SURVEY LINE
TROLLEY POLE	CULVERT
POWER POLE	DROP INLET
TELEPHONE POLE	TROLLEY POLE
TREES	POWER POLE
HEDGE	TELEPHONE POLE

CURVE DATA	
DEFLECTION ANGLE	Δ
DEGREE OF CURVE	D
RADIUS OF CURVE	R
TANGENT DISTANCE	T
LENGTH OF CURVE	L
EXTERNAL DISTANCE	E
POINT OF INTERSECTION	P. I.
POINT OF CURVE	P. C.
POINT OF TANGENT	P. T.
POINT ON TANGENT	P. O. T.

THIS PROJECT TO BE CONSTRUCTED IN ACCORDANCE WITH STANDARD SPECIFICATIONS ON FILE WITH THE U.S. BUREAU OF PUBLIC ROADS AS APPROVED JULY 7, 1926.

THESE PLANS SUBJECT TO SUCH REVISIONS AS MAY BE REQUIRED BY THE BUREAU OF PUBLIC ROADS OR THE CHIEF ENGINEER.

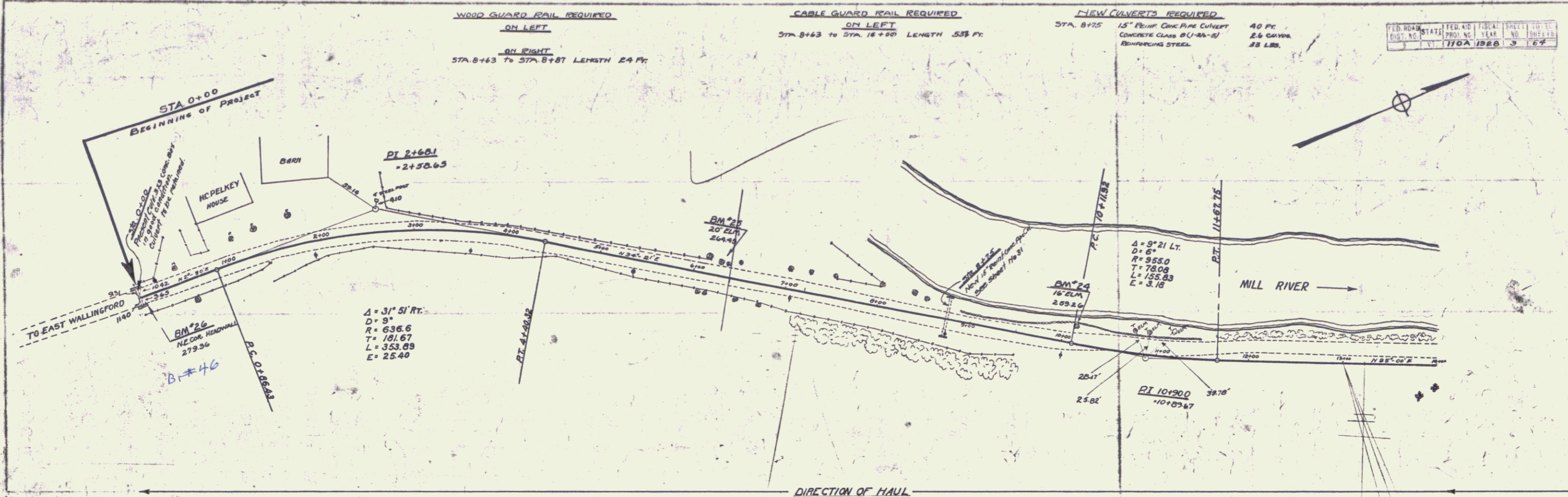
Pin # 00R119  
Route VT 103  
Date 5/25/1928

APPROVED: May 25, 1928  
H. E. Sargent  
CHIEF ENGINEER  
SUBMITTED BY ORDER OF THE STATE HIGHWAY BOARD  
May 15, 1928  
F. B. Bell  
COMMISSIONER OF HIGHWAYS.

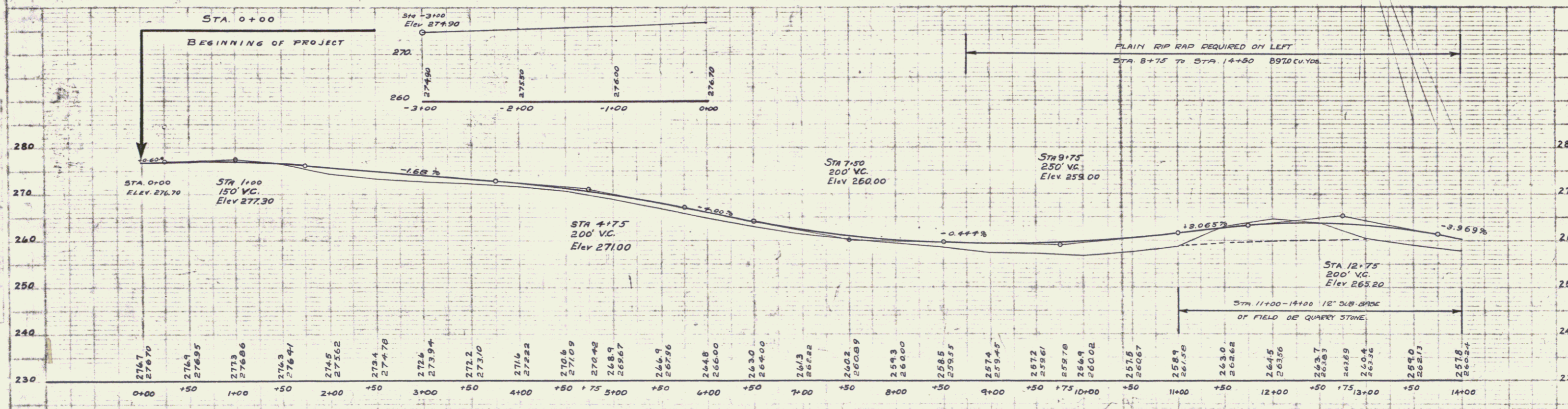
RECOMMENDED  
DISTRICT ENGINEER BUREAU OF PUBLIC ROADS  
RECOMMENDED FOR APPROVAL  
CHIEF ENGINEER BUREAU OF PUBLIC ROADS  
APPROVED  
DIRECTOR - BUREAU OF PUBLIC ROADS

SERIES F. No. 110A FILED  
SHEET 1 OF 64

PLAN  
 DATE: 11/20/58  
 DRAWN BY: J.B. WOODS  
 CHECKED BY: J.B. WOODS  
 PROJECT: R.R. 110A  
 SHEET: 3 OF 64



ED. ROAD DIST. NO.	STATE	FED. AID PROJ. NO.	FISCAL YEAR	SHEET NO.	TOTAL SHEETS
110A	VT	110A	1958	3	64



BM NO 26 NE. Cor. of Culvert Sta 0+00 Elev 279.36  
 BM NO 25 Spike in base of 20" Elm West of Sta 6+27 Elev 264.45  
 BM NO 24 Spike in 20" Elm West of Sta 10+13 Elev 259.26

SERIES F No. 110A  
 SHEET 3 OF 64

**WOOD GUARD RAIL REQUIRED**  
**ON LEFT**  
 Sta. 21+45 to Sta. 21+63 Length 24 ft  
 " 23+12 " " 23+47 " 29 "  
 " 23+88 " " 30+00 " 12 "

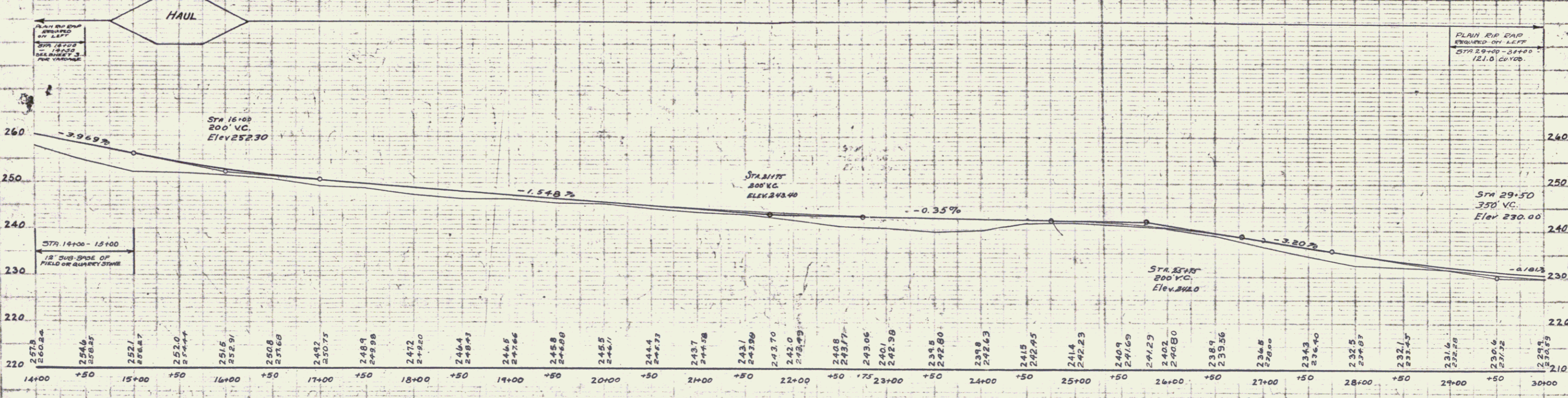
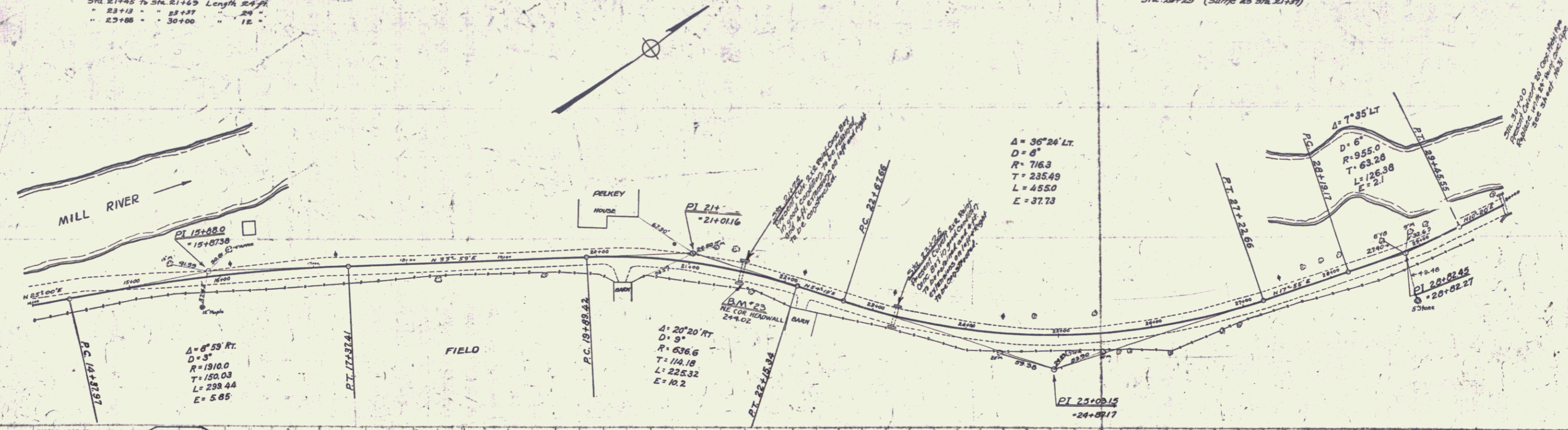
**ON RIGHT**  
 Sta. 21+45 to Sta. 21+63 Length 24 ft  
 " 23+12 " " 23+47 " 29 "  
 " 23+88 " " 30+00 " 12 "

**CABLE GUARD RAIL REQUIRED**  
**ON LEFT**  
 Sta. 23+12 to Sta. 26+96 Length 384 ft  
 " 23+40 " " 30+00 " 50 "  
 " 24+00 " " 24+55 " 55 "

**NEW CULVERTS REQUIRED**  
 Sta. 30+00 24" Reinf. Conc. Pipe Culvert 36 ft  
 Capacity Class A (1-2-4) 26 cu yds.  
 Reinforcing Steel 54 lbs.

**CULVERT REPAIRS REQUIRED**  
 Sta. 21+27 - Extension of barrel to be constructed on left hand side  
 Concrete Class A (road) 4.6 cu yds  
 Reinforcing Steel 281 lbs.  
 Sta. 28+25 (same as Sta. 21+27)

NO. SHEETS	NO. SHEETS	NO. SHEETS	NO. SHEETS	TOTAL SHEETS
1	1	1	1	4
PROJECT NO. 110A 1988				67



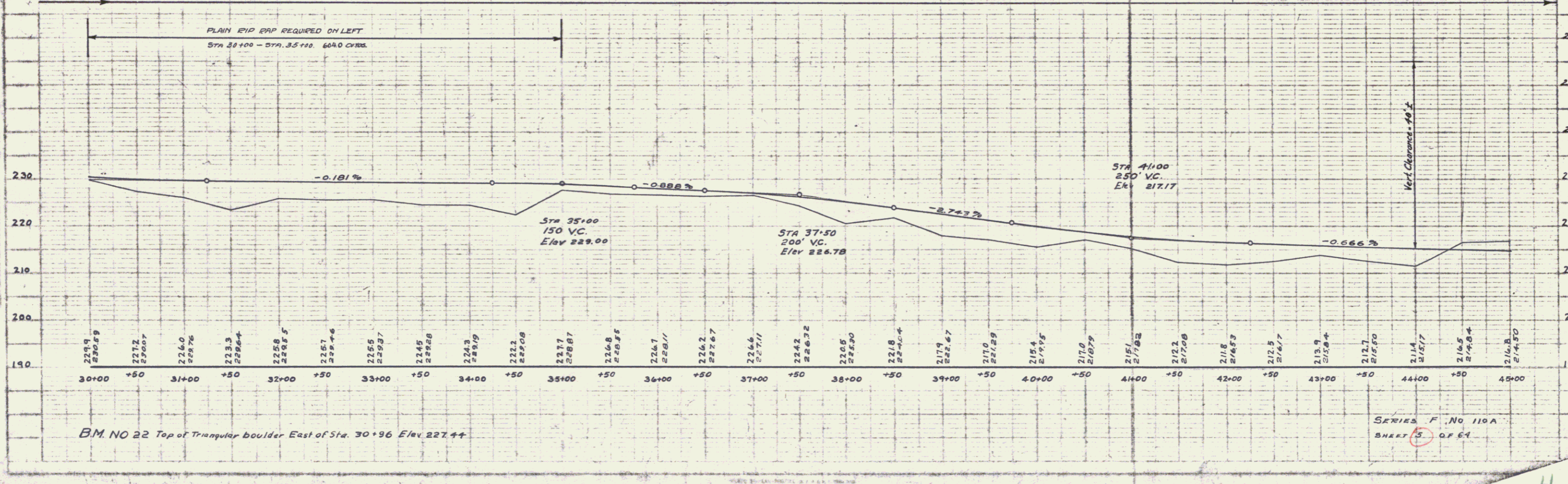
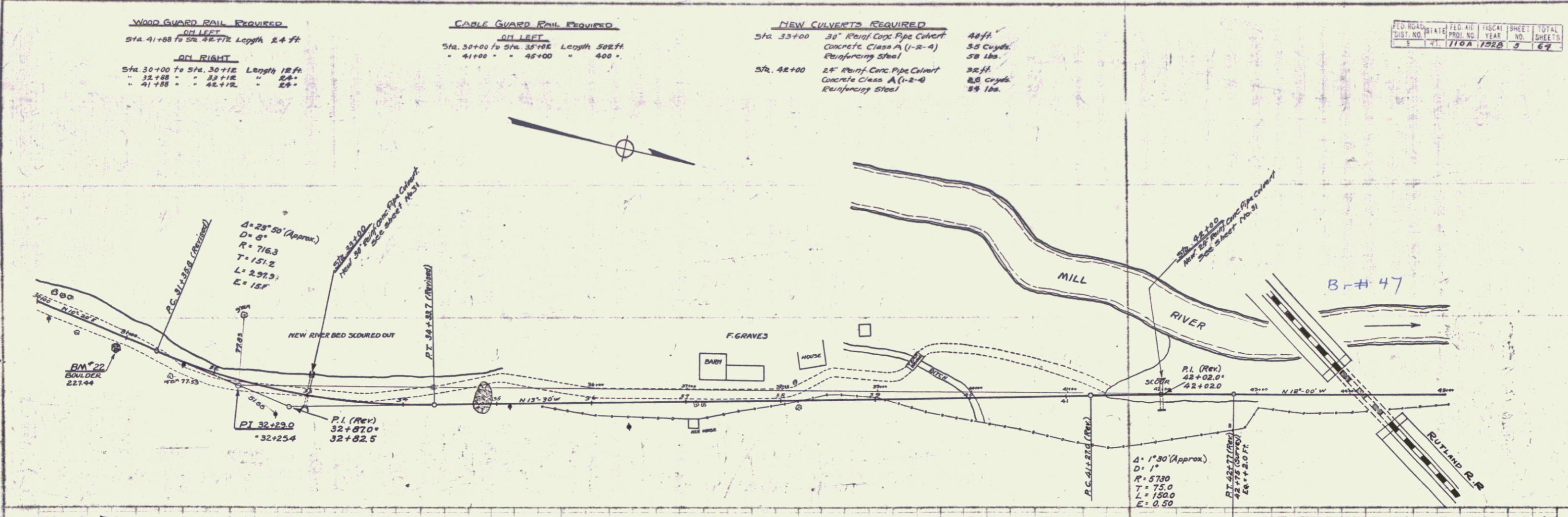
BM. NO 23 N.E. Con. of Culvert Headwall at Sta. 21+58.5 Elev. 247.02

SERIES F No 110A  
 SHEET 7 OF 64

PLAN  
 DATE: 10/15/28  
 DRAWN BY: A.D. BROAD  
 CHECKED BY: [Signature]

PROFILE  
 DATE: 10/15/28  
 DRAWN BY: A.D. BROAD  
 CHECKED BY: [Signature]

FED. ROAD DIST. NO.	STATE	FISCAL YEAR	SHEET NO.	TOTAL SHEETS
110A	VT	1928	5	67

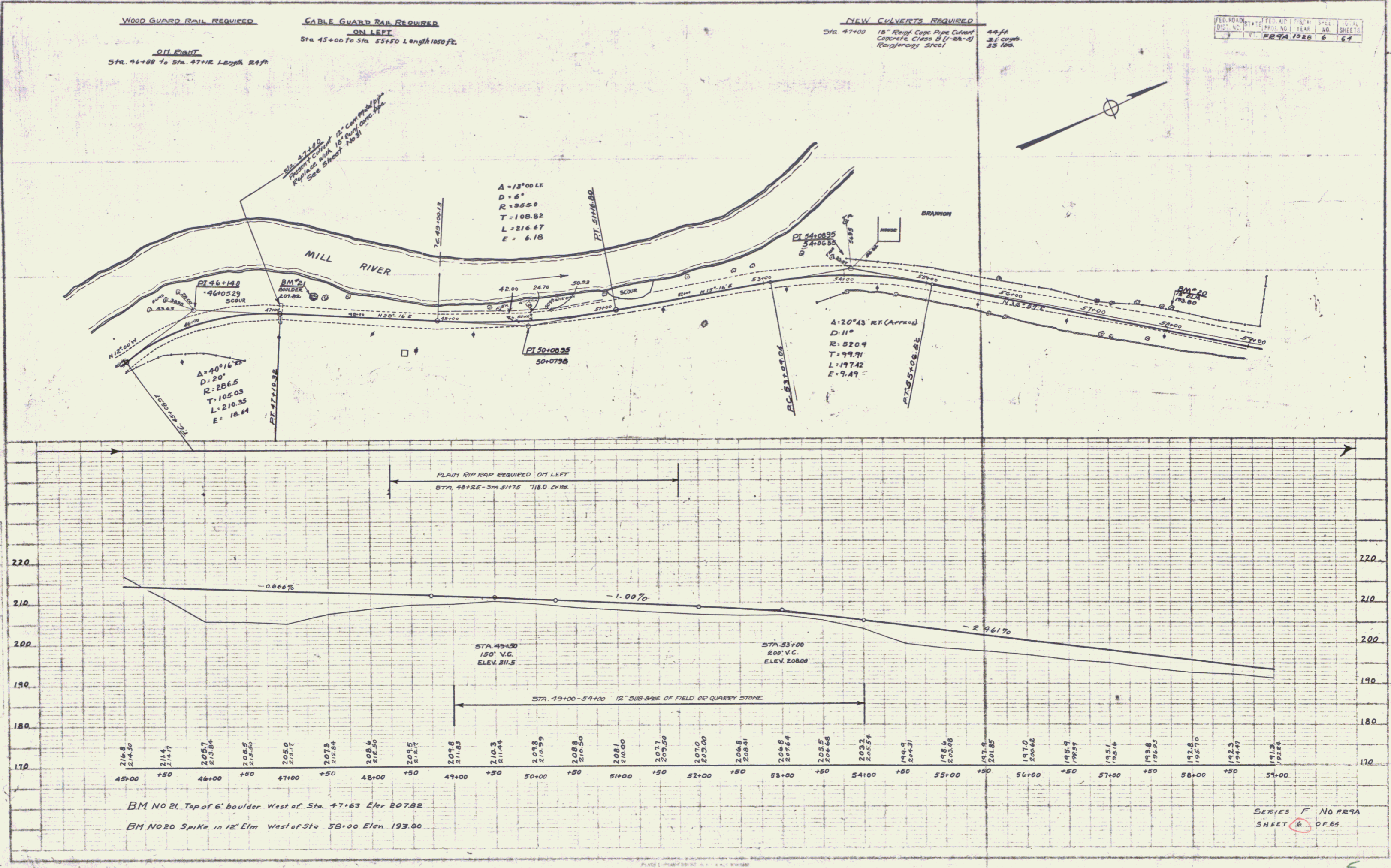


SERIES F. No 110A  
 SHEET 5 OF 67

4

PLAN  
 DATE 10/11/28  
 DRAWN BY  
 CHECKED BY  
 APPROVED BY

PLAN  
 DATE 10/11/28  
 DRAWN BY  
 CHECKED BY  
 APPROVED BY

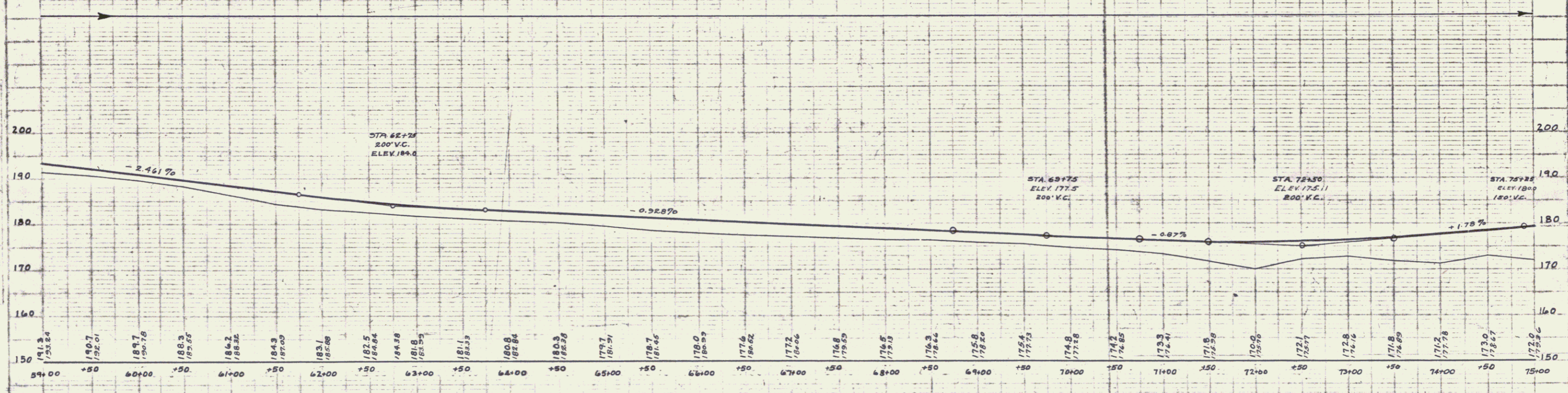
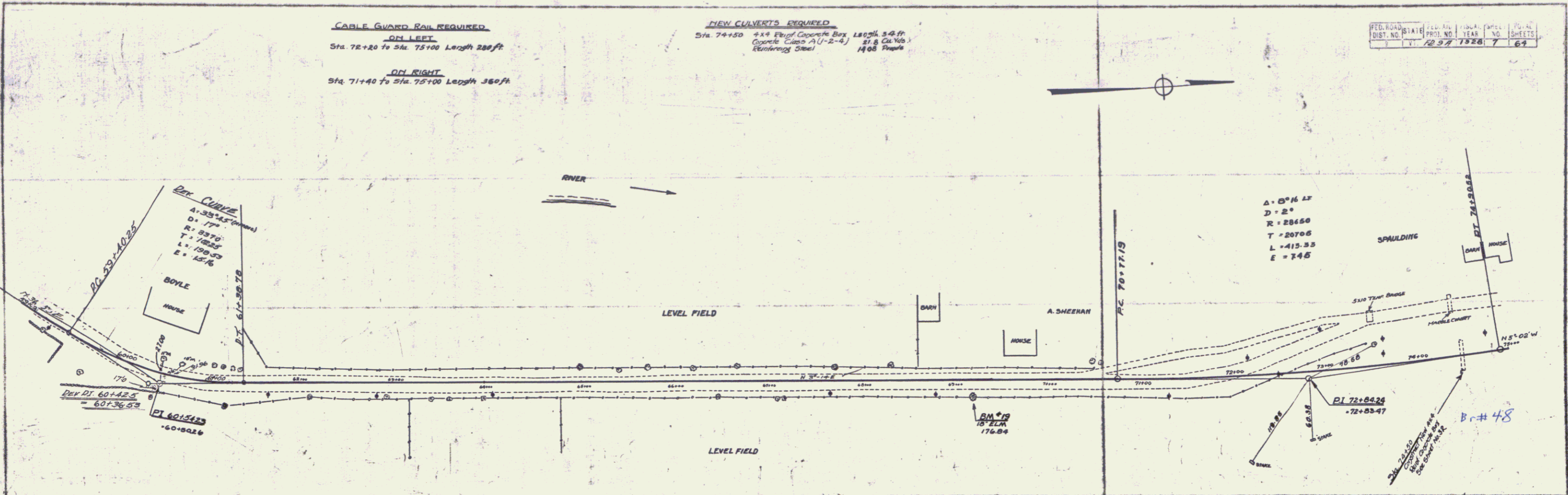


**CABLE GUARD RAIL REQUIRED**  
**ON LEFT**  
 Sta. 72+20 to Sta. 75+00 Length 280ft

**ON RIGHT**  
 Sta. 71+40 to Sta. 75+00 Length 360ft

**NEW CULVERTS REQUIRED**  
 Sta. 74+150 4x4 Elong Concrete Box 180th 5-8 ft  
 Concrete Class A(1-2-4) 21 & 24 Nos.  
 Reinforcing Steel 4#8 1 No.

PLAN  
 DATE: 12/28/28  
 DRAWN BY: A.D. WOOD  
 CHECKED BY: A.D. WOOD



B.M. NO 19 Spike in Root of 18' Elm East of Sta 69+7. Elev 176.84

SERIES F NO F-59A  
 SHEET 7 OF 64

6

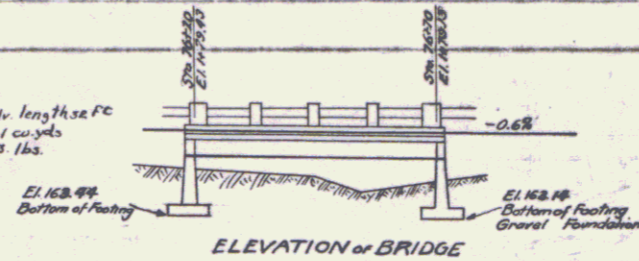
**Wood Guard Rail Required**  
**On Left**  
 Sta. 83+65 to 83+87 Length 24 ft

**On Right**  
 Sta. 83+65 to 83+87 Length 24 ft.

**Cable Guard Rail Required**  
**On Left**  
 Sta. 75+00 to Sta. 79+00 Length 400 ft

**On Right**  
 Sta. 75+00 to Sta. 79+00 Length 400 ft

**New Culvert Required**  
 Sta. 83+75 18" Rein. Conc. Pipe Culv. length 36 ft  
 Conc. Class A (1-2-4) 3.1 cu yds  
 Reinforcing steel 37 lbs.



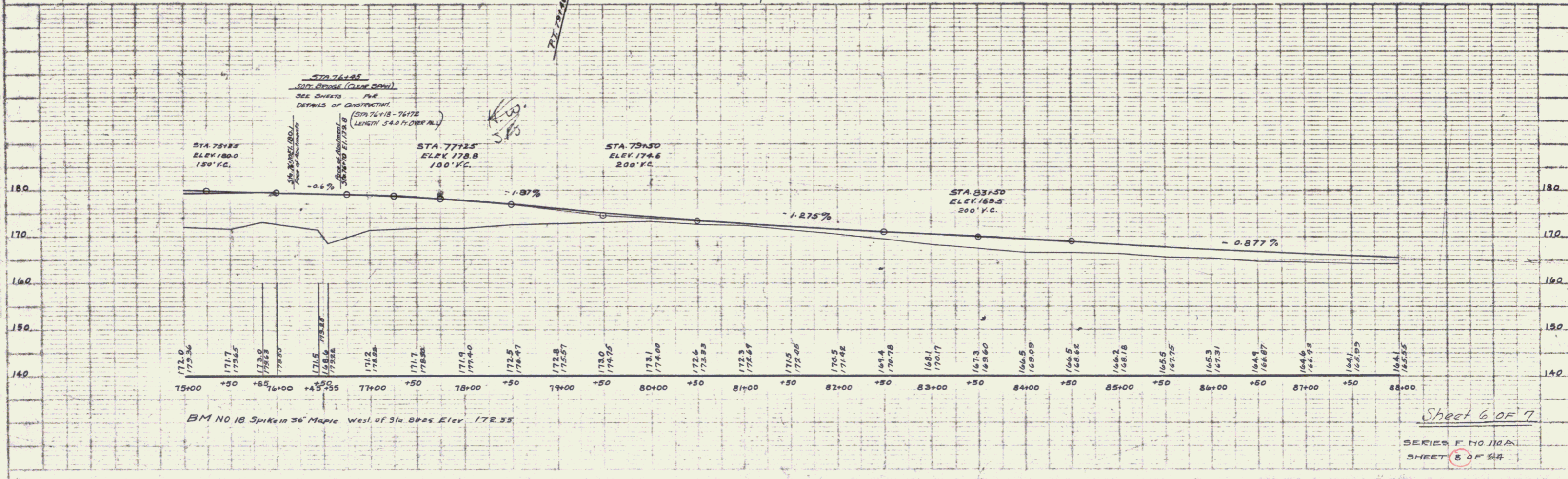
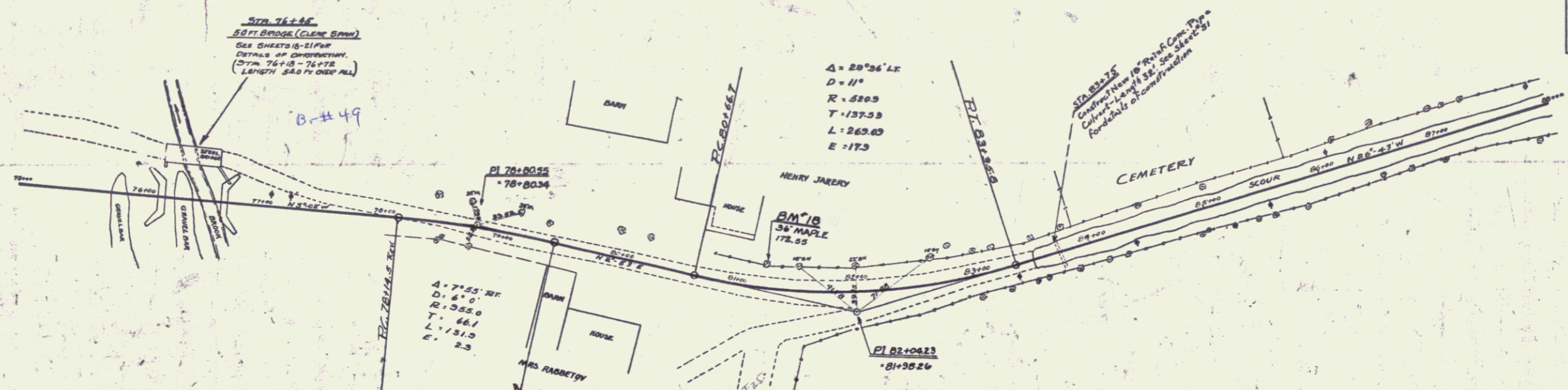
For this bridge use the following sheets:  
 Sheet 3A R-10 Square  
 S.T.B. 20-50  
 Std. Cable Rail Sheet-6B5  
 S.B. 2 Standard Sheet

FED. ROAD DIST. NO.	STATE	FED. AID PROJ. NO.	SHEET NO.	TOTAL SHEETS
	110A	192B	5	64

ESTIMATED QUANTITIES	
Structure Excavation	250 Cu Yds.
Concrete Class A (1-2-4)	78 Cu Yds.
Concrete Class B (1-2-5)	146 Cu Yds.
Reinforcing Steel	29,550 Lbs.

PLAN  
 PUTMAN  
 A. C. WOOD  
 CIVIL ENGINEER  
 LICENSE NO. 1000  
 STATE OF MISSOURI

PLAN  
 PUTMAN  
 A. C. WOOD  
 CIVIL ENGINEER  
 LICENSE NO. 1000  
 STATE OF MISSOURI

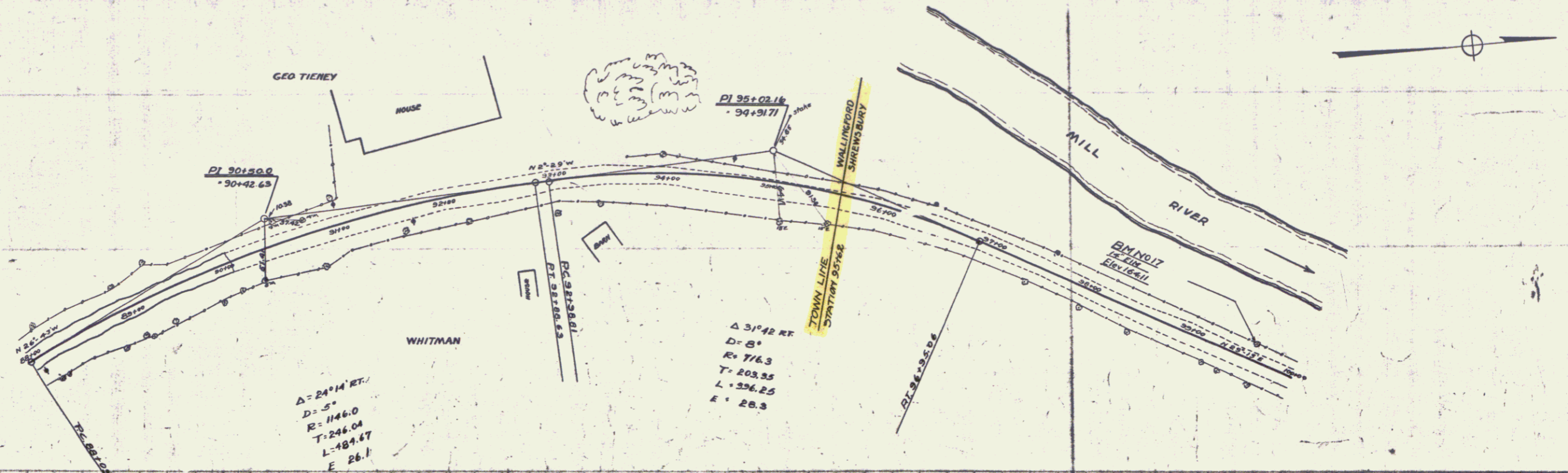


BM NO 18 Spike in 36" Maple West of Sta 83+65 Elev 172.55

Sheet 6 of 7  
 SERIES F NO 110A  
 SHEET 5 OF 64

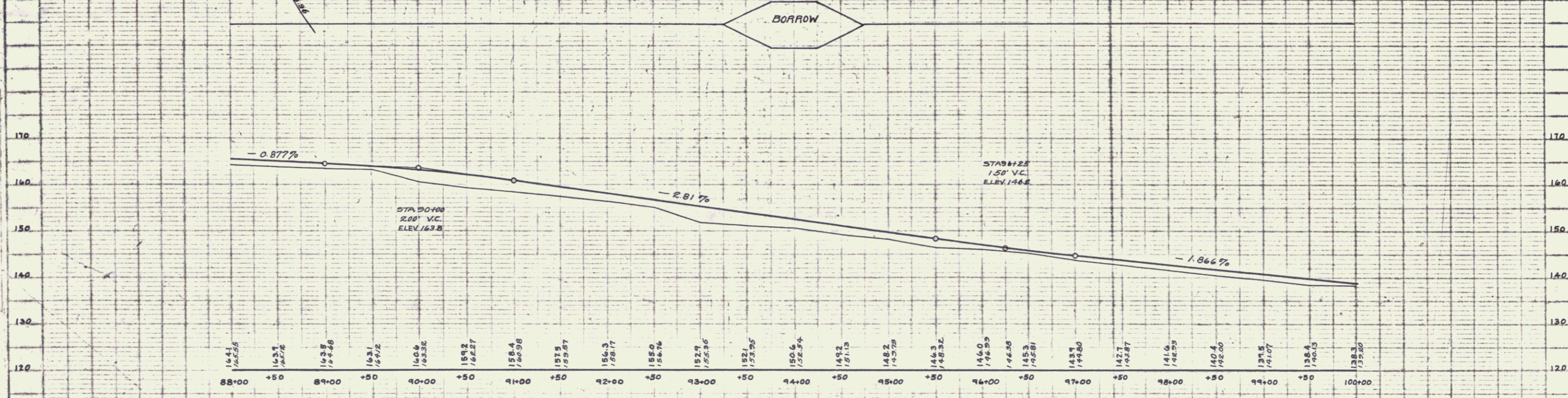
PLAN  
 PUTNAM  
 ADWOOD

ELEVATION  
 ADWOOD



$\Delta = 24' 14''$  RT.  
 $D = 5'$   
 $R = 1146.0$   
 $T = 246.04$   
 $L = 489.47$   
 $E = 26.1$

$\Delta = 3' 42''$  RT.  
 $D = 8'$   
 $R = 716.3$   
 $T = 203.35$   
 $L = 256.25$   
 $E = 28.3$



B.M. NO 17 Spike in 14" Elm West of Sta 99+59 Elev 164.11 50' South of Nickols & Barney Sign



WOOD GUARD RAIL REQUIRED

ON LEFT

STA 122+50 - 122+62 LENGTH 12 FT

ON RIGHT

STA 122+38 - 122+62 LENGTH 24 FT

CABLE GUARD RAIL REQUIRED

ON LEFT

Sta 113+50 - 114+28 Length 78 FT

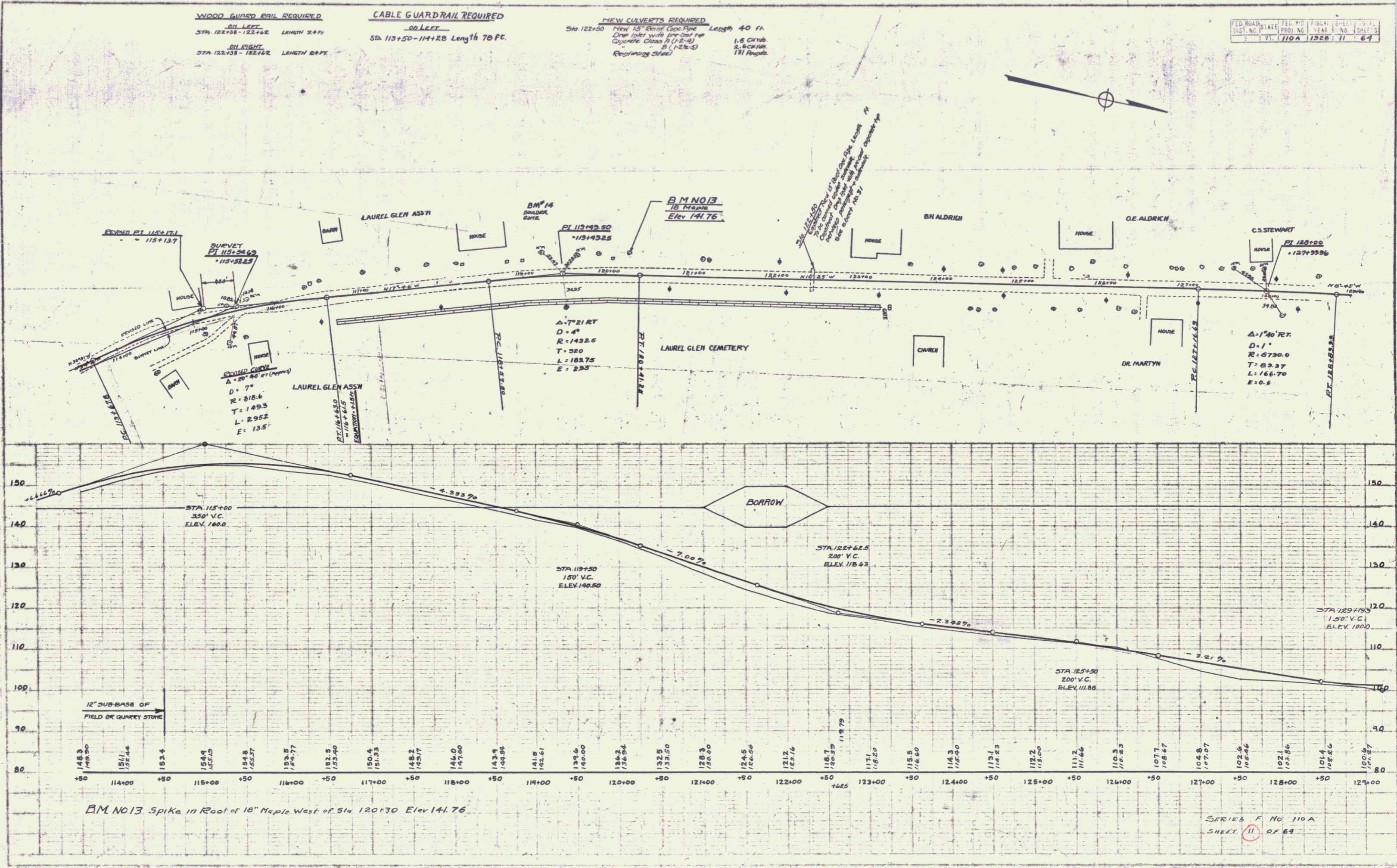
NEW CULVERTS REQUIRED

Sta 122+50 New 15" Reinforced Concrete Pipe Length 40 FT  
One Joint with 400-Grate  
Concrete Class A (1-2-4)  
S (1-21-3)  
Reinforcing Steel  
1.6 Curbs  
2.8 Curbs  
131 Angles

FED. ROAD DIST. NO.	PLATE	FED. PROJ. NO.	FISCAL YEAR	SHEET NO.	TOTAL SHEETS
	VI	110A	1928	11	64

REVISIONS

NO.	DATE	BY	DESCRIPTION
1	1928	W. J. ...	...
2	1928	A. D. Wood	...



BM NO 13 Spike in Root of 18" Maple West of Sta 120+30 Elev 141.76

SERIES F NO 110A SHEET 11 OF 64

10

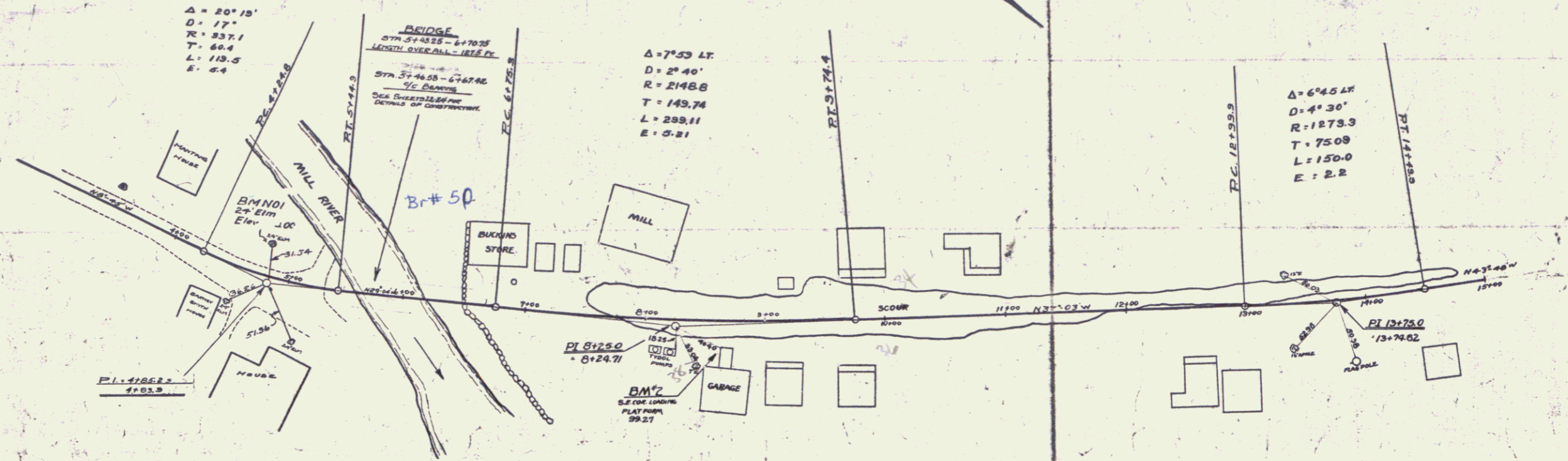
**WOOD GUARD RAIL REQUIRED**  
 ON LEFT Length 244'  
 Sta. 510 to Sta. 534  
 ON RIGHT Length 244'  
 Sta. 536 to Sta. 560

$\Delta = 20^{\circ} 15'$   
 $D = 17'$   
 $R = 237.1$   
 $T = 66.4$   
 $L = 110.5$   
 $E = 6.4$

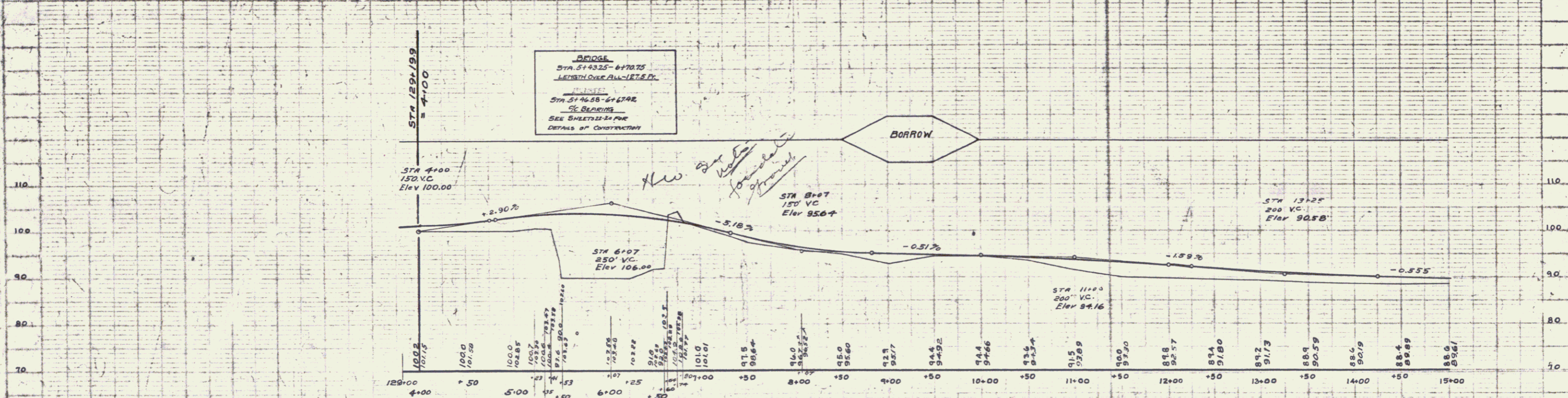
**BRIDGE**  
 STA. 514.52 - 517.05  
 LENGTH OVER ALL - 182.5'  
 SEE SHEETS 12-13 FOR  
 DETAILS OF CONSTRUCTION

$\Delta = 7^{\circ} 53' LT$   
 $D = 2^{\circ} 40'$   
 $R = 2148.8$   
 $T = 149.74$   
 $L = 299.11$   
 $E = 5.21$

$\Delta = 6^{\circ} 45' LT$   
 $D = 4^{\circ} 30'$   
 $R = 1273.3$   
 $T = 75.09$   
 $L = 150.0$   
 $E = 2.2$



**BRIDGE**  
 STA. 514.52 - 517.05  
 LENGTH OVER ALL - 182.5'  
 SEE SHEETS 12-13 FOR  
 DETAILS OF CONSTRUCTION



BMN01 21" Elm at E. End Temp. Bridge at Sta. 5+38 Elev. 100.00  
 BMN02 S.E. Cor. Concrete Platform for Service Station East of Sta. 8+63 Elev. 99.27

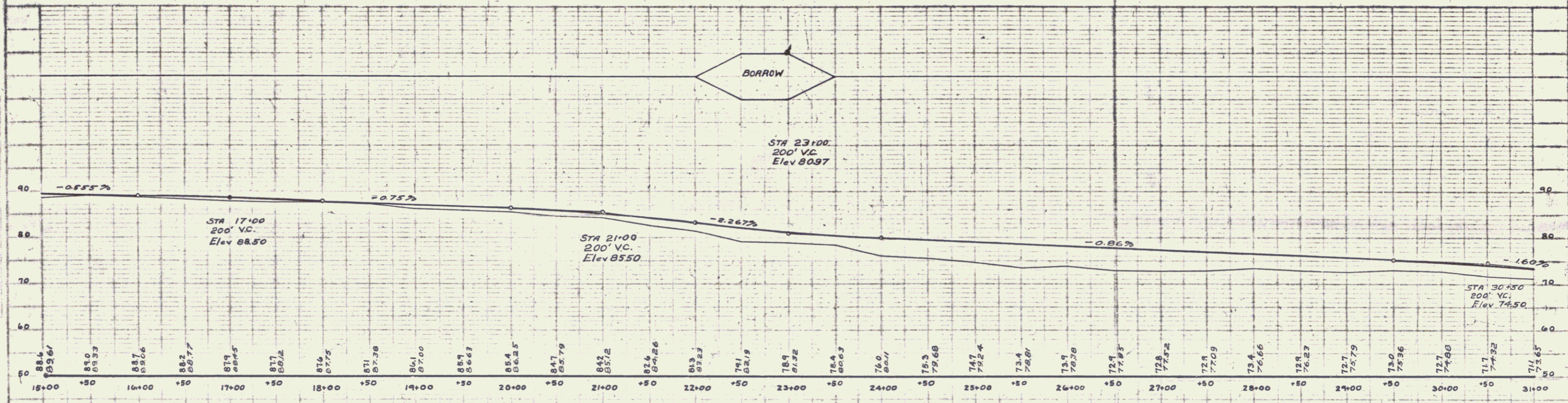
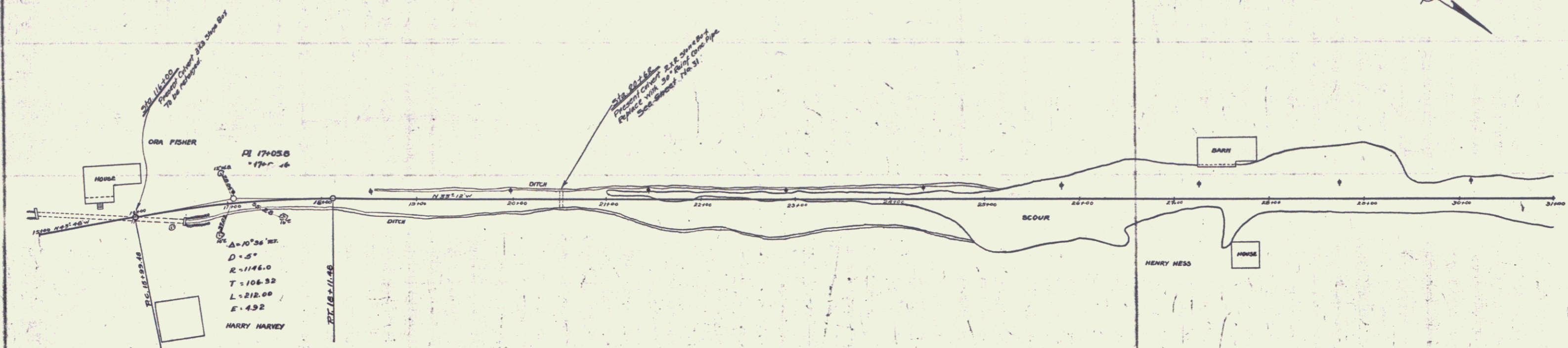
PUTMAN  
A.D. WOOD

PUTMAN  
A.D. WOOD

**WOOD GUARD RAIL REQUIRED**  
**ON LEFT**  
 Sta. 20+50 to Sta. 20+74 Length 24 ft  
**ON RIGHT**  
 Sta. 20+50 to Sta. 20+74 Length 24 ft

**NEW CULVERTS REQUIRED**  
 Sta. 20+62 30' Rein. Conc. Pipe Culvert  
 Concrete Class A (1-2-4)  
 Reinforcing Steel  
 32 ft  
 35 Cracks  
 58 lbs.

110A 132B 15 67



BM NO 3 Top of Rock Base of 6" local Tel. pole Elev 88.65  
 BM NO 4 N.E. of Tel. pole no 1597 E. side of Road 3' Rock 20' N. of 4" apple Tree Elev 75.08

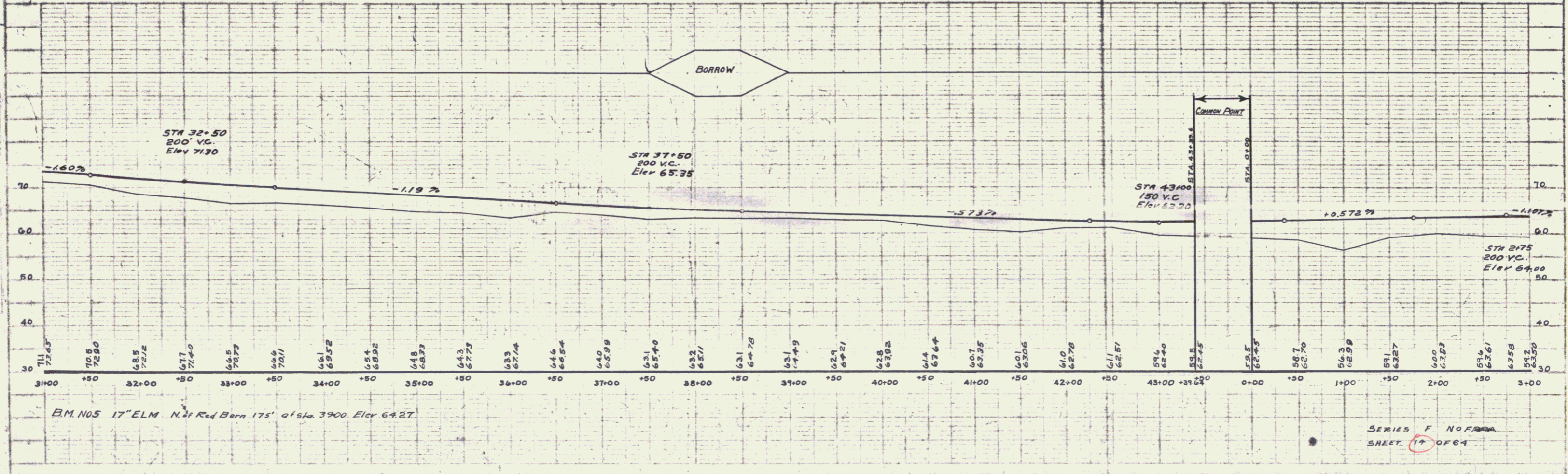
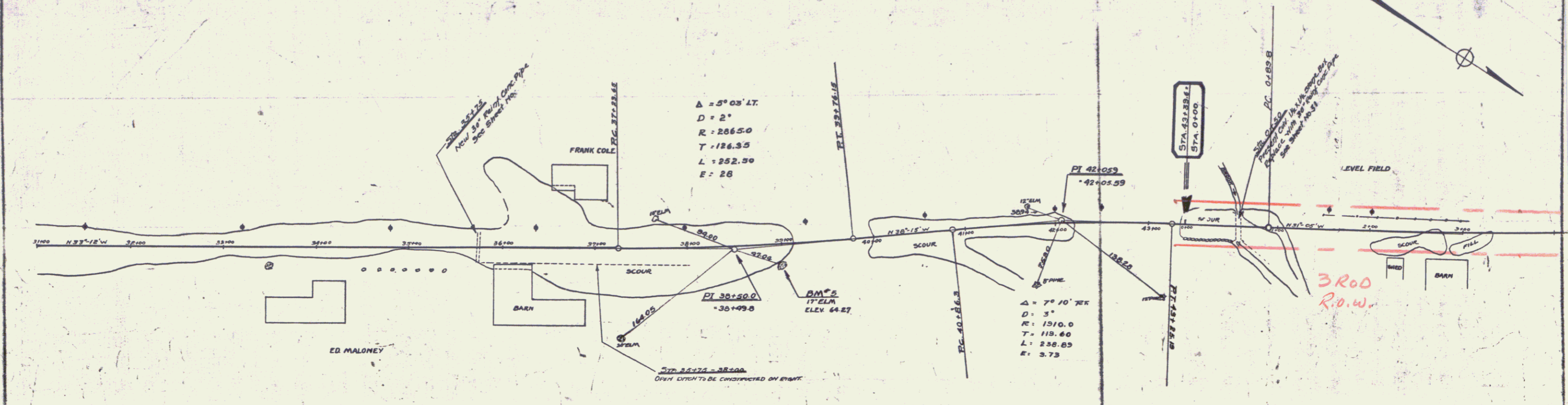
SERIES F 110.110-A  
 SHEET 13 OF 67

**WOOD GUARD RAIL REQUIRED**  
**ON LEFT**  
 Sta. 35+63 to Sta. 35+87 Length 24ft  
**ON RIGHT**  
 Sta. 35+63 to Sta. 35+87 Length 24ft

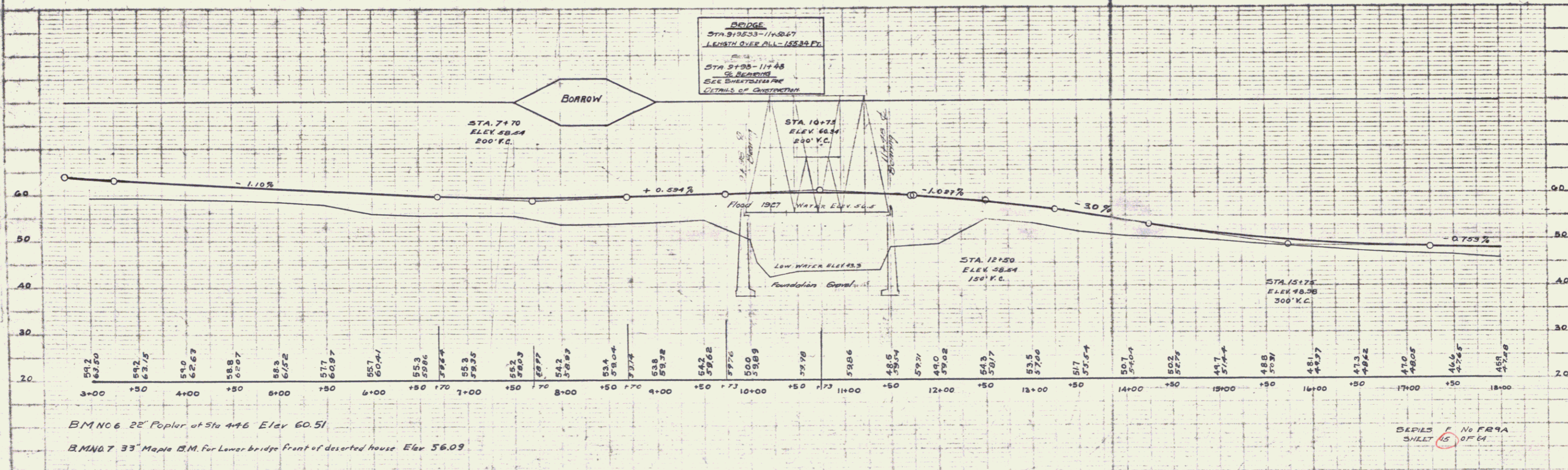
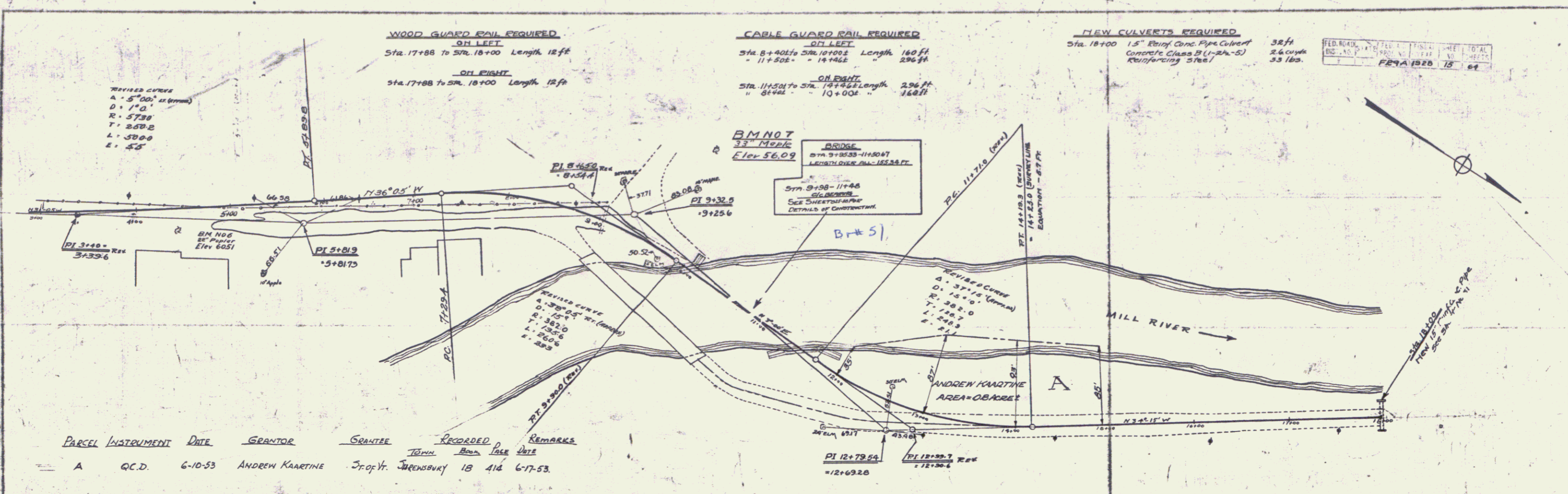
**CABLE GUARD RAIL REQUIRED**  
**ON LEFT**  
 Sta. 0+38 to Sta. 1+54 Length 116ft  
**ON RIGHT**  
 Sta. 43+08 to Sta. 3+00 Length 332ft

**NEW CULVERTS REQUIRED**  
 Sta. 35+75 30" Reinf. Conc. Pipe Culvert  
 Concrete Class A (1-2-4)  
 Reinforcing Steel 32 ft  
 38 Cr. yds.  
 58 lbs.  
 Sta. 0+50 30" Reinf. Conc. Pipe Culvert  
 Concrete Class A (1-2-4)  
 Reinforcing Steel 32 ft  
 38 Cr. yds.  
 58 lbs.

FED. ROAD DIST. NO. STATE FED. AID DIST. NO. COUNTY DIST. NO. DATE  
 100 100 100 100 100 100  
 ERBA 1988 14 69



SERIES F NO. 1000  
 SHEET 17 OF 64



FED. ROAD DIST. NO. STATION NO. FISCAL YEAR SHEET NO. TOTAL SHEETS  
 170A 1928 16 67

**WOOD GUARD RAIL REQUIRED**

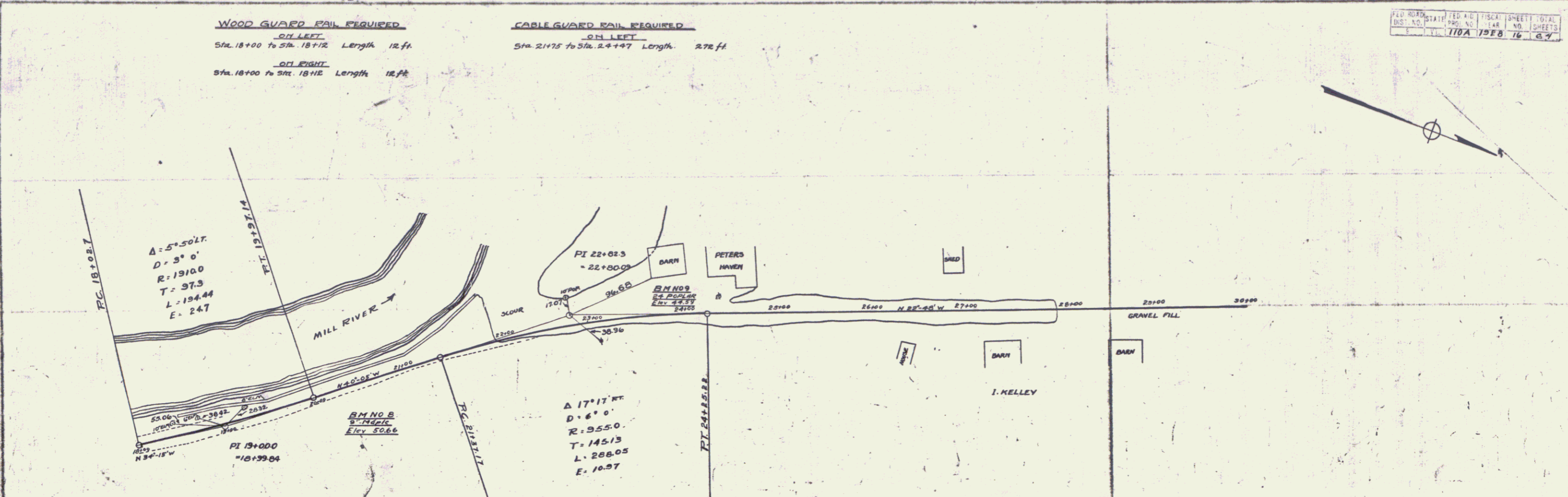
ON LEFT  
 Sta. 18+00 to Sta. 18+12 Length 12 ft

ON RIGHT  
 Sta. 18+00 to Sta. 18+12 Length 12 ft

**CABLE GUARD RAIL REQUIRED**

ON LEFT  
 Sta. 2+175 to Sta. 2+447 Length 272 ft

PLAN  
 170A  
 1928  
 16  
 67



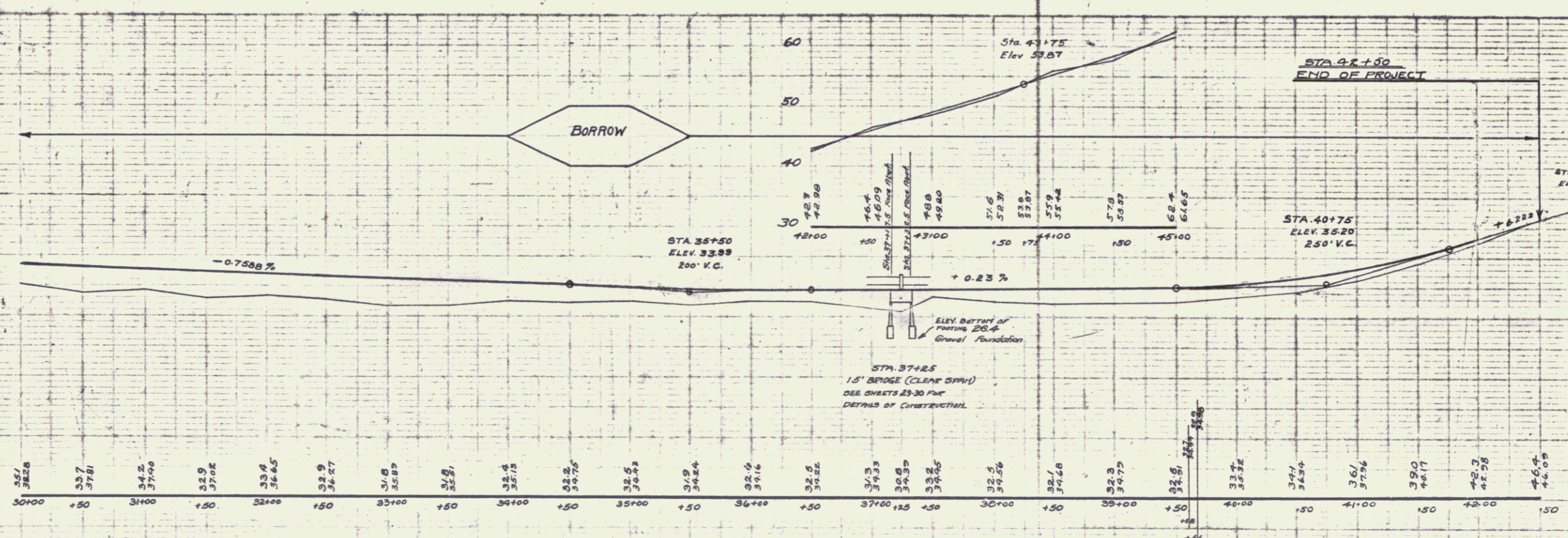
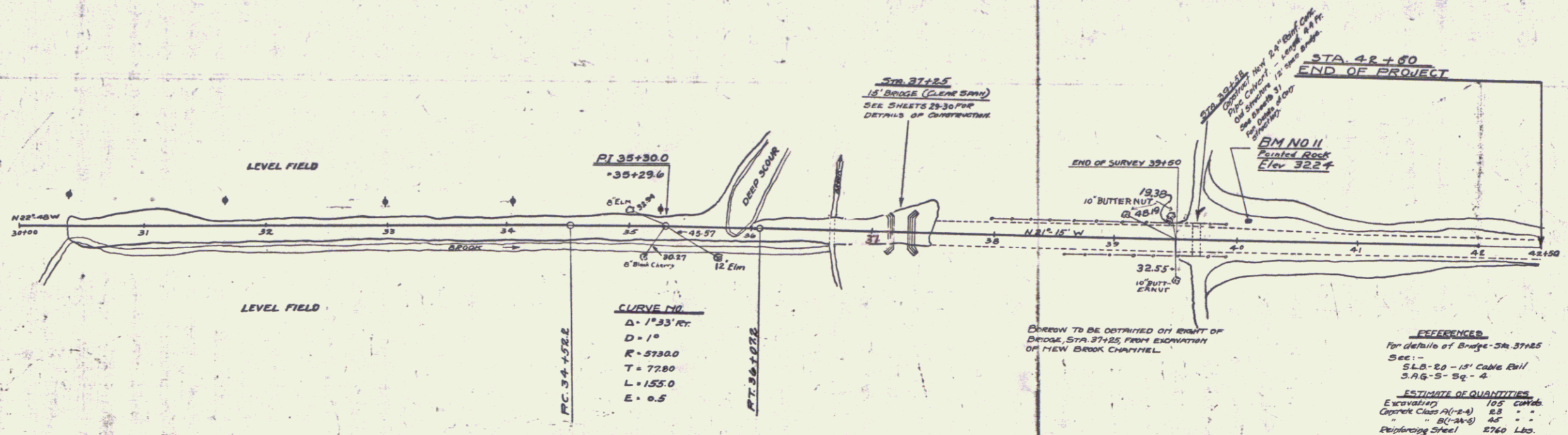
PUTNAM  
ADWOOD

PUTNAM  
ADWOOD

**CABLE GUARD RAIL REQUIRED**  
**LEFT**  
 Sta. 36+22 to Sta. 34+94 Length 78 ft  
 " 37+04 " " 41+44 " 440 ft  
**RIGHT**  
 Sta. 35+42 to Sta. 36+98 Length 156 ft  
 " 37+06 " " 41+44 " 440 ft

**NEW CULVERTS REQUIRED**  
 5m 39+58 24" Rupt. Clay Pipe Culv. 126 ft  
 Cooper Class (A-2-A) 2.6 crm.  
 Rebaring Steel

FED. ROAD DIST. NO. 118 A 1926 17 6-7



BM No 10 18" Elm 30' N. of Tel pole No 1634 Elev 36.90  
 BM No 11 25' S. of Tel pole No 1640 Pointed Rock at Foot of Slope Elev 32.24  
 BM No 12 E. Side Rd Rock in Slope at base of 4" Black Cherry at gravel hole Elev 54.44

SERIES F No 118 A  
 SHEET 11 OF 64

110