

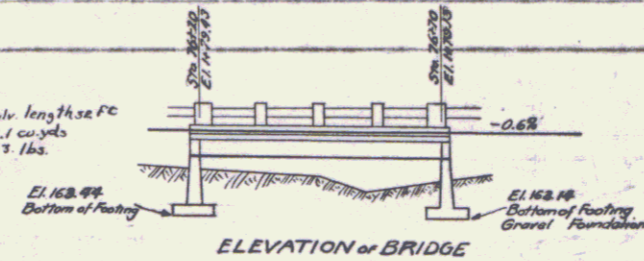
Wood Guard Rail Required
On Left
 Sta. 83+65 to 83+87 Length 24 ft

On Right
 Sta. 83+65 to 83+87 Length 24 ft.

Cable Guard Rail Required
On Left
 Sta. 75+00 to Sta. 79+00 Length 400 ft

On Right
 Sta. 75+00 to Sta. 79+00 Length 400 ft

New Culvert Required
 Sta. 83+75 18" R.I.P. Cast Pipe Culvert length 50 ft
 Conc. Class A (1-2-4) 3.1 cu yds
 Reinforcing steel 37 lbs.



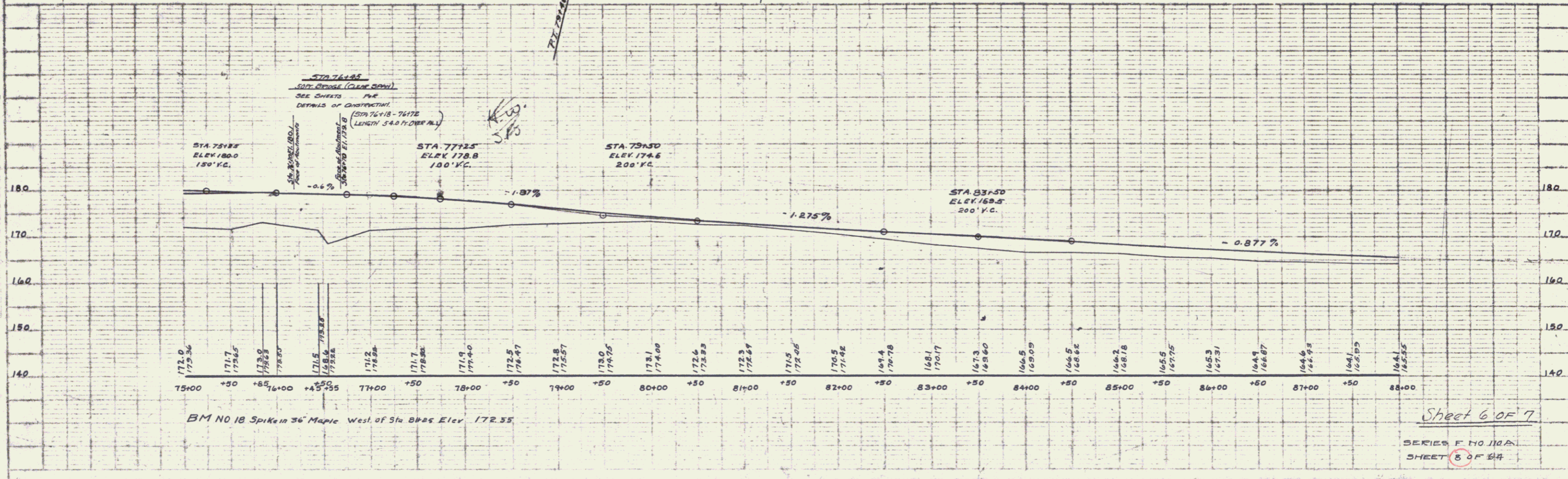
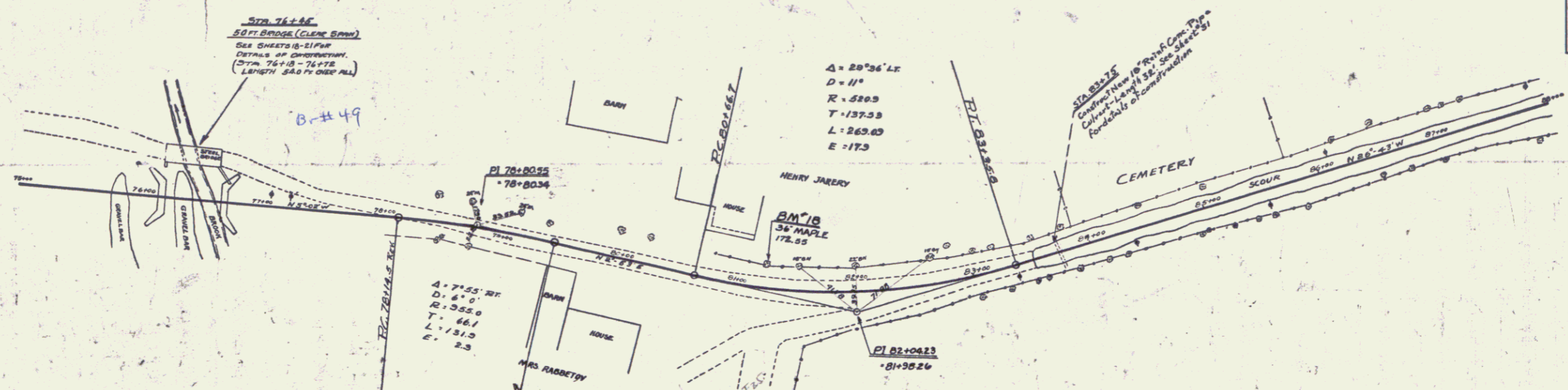
ELEVATION OF BRIDGE
 For this bridge use the following sheets:
 Sheet 3A R-10' Square
 S.T.B. 20-50
 Std. Cable Rail Sheet-6B5
 S.B.2 Standard Sheet

FED. ROAD DIST. NO.	STATE	FED. AID PROJ. NO.	SHEET NO.	TOTAL SHEETS
110A	22B		5	64

ESTIMATED QUANTITIES	
Structure Excavation	250 Cu Yds.
Concrete Class A (1-2-4)	78 Cu Yds.
Concrete Class B (1-2-5)	146 Cu Yds.
Reinforcing Steel	29,550 Lbs.

PLAN
 PUTMAN
 A. C. WOOD
 CIVIL ENGINEER
 LICENSE NO. 12345
 STATE OF MISSOURI
 EXP. DATE 12/31/2025

PLAN
 PUTMAN
 A. C. WOOD
 CIVIL ENGINEER
 LICENSE NO. 12345
 STATE OF MISSOURI
 EXP. DATE 12/31/2025



Sheet 6 of 7
 SERIES F NO 110A
 SHEET 5 OF 64