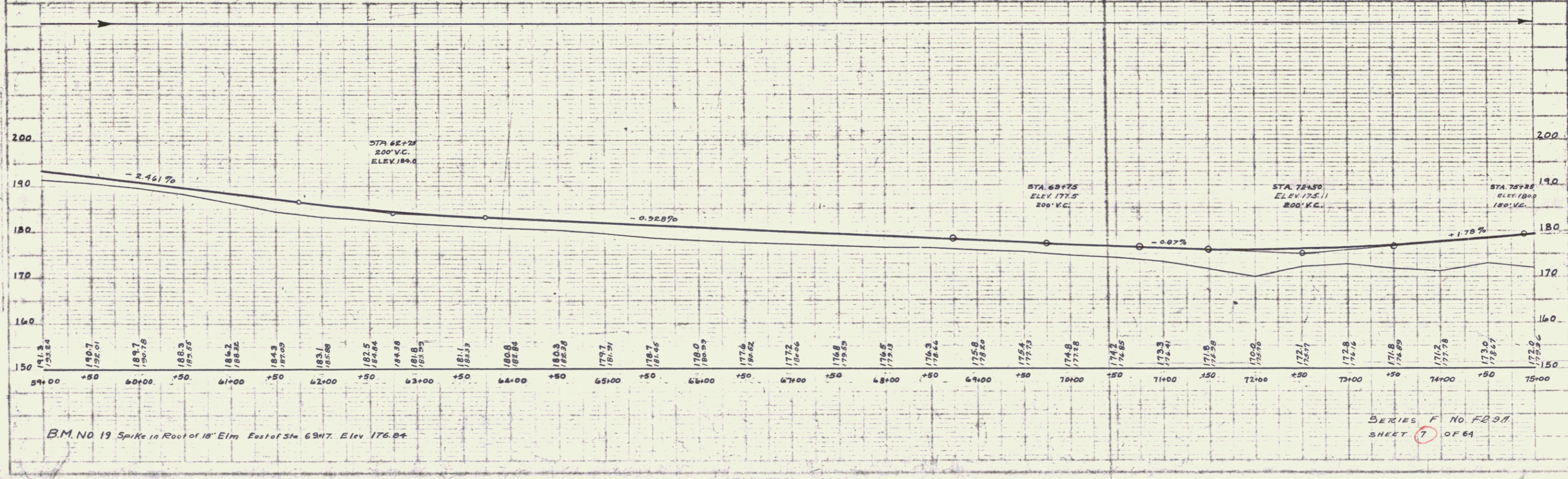
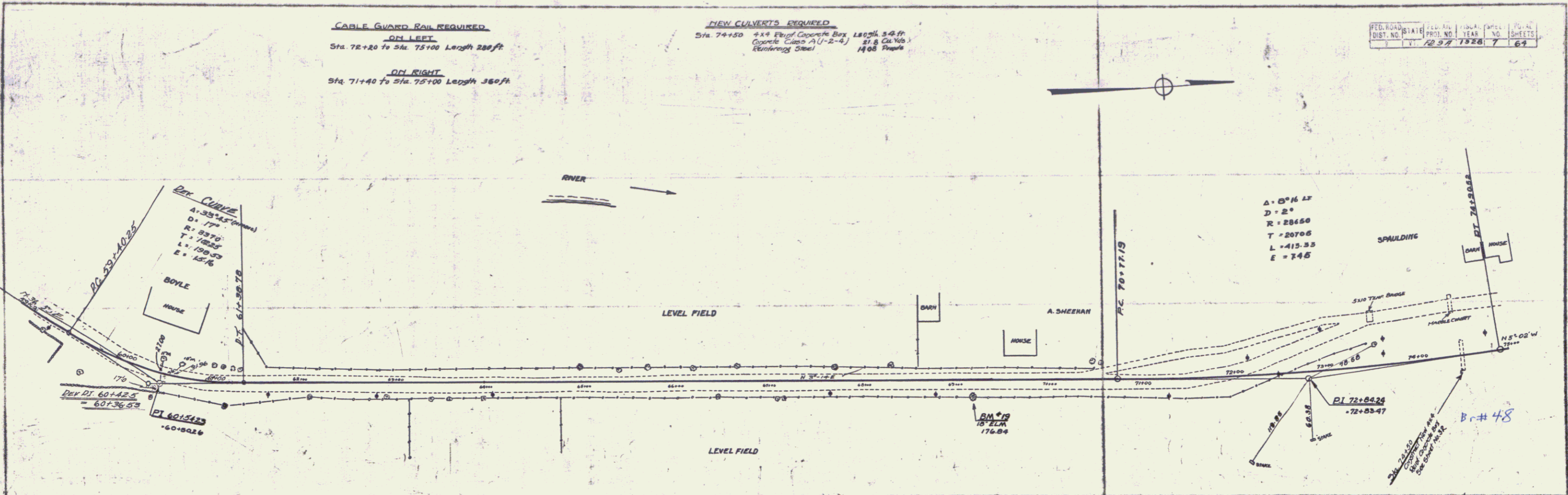


CABLE GUARD RAIL REQUIRED
ON LEFT
 Sta. 72+20 to Sta. 75+00 Length 280ft

ON RIGHT
 Sta. 71+40 to Sta. 75+00 Length 360ft

NEW CULVERTS REQUIRED
 Sta. 74+150 4x4 Elong Concrete Box 180th 5-8 ft
 Concrete Class A(1-2-4) 21 & 24 Nos
 Reinforcing Steel 4#8 1 No

PLAN
 DATE: 12/28/28
 DRAWN BY: A.D. WOOD
 CHECKED BY: A.D. WOOD



B.M. NO 19 Spike in Root of 18' Elm East of Sta 69+75. Elev 176.04

SERIES F NO F-28A
 SHEET 7 OF 64

6