

WOOD GUARD RAIL REQUIRED
ON LEFT
 Sta. 21+45 to Sta. 21+63 Length 24 ft
 " 23+12 " " 23+37 " 25 "
 " 23+88 " " 30+00 " 12 "

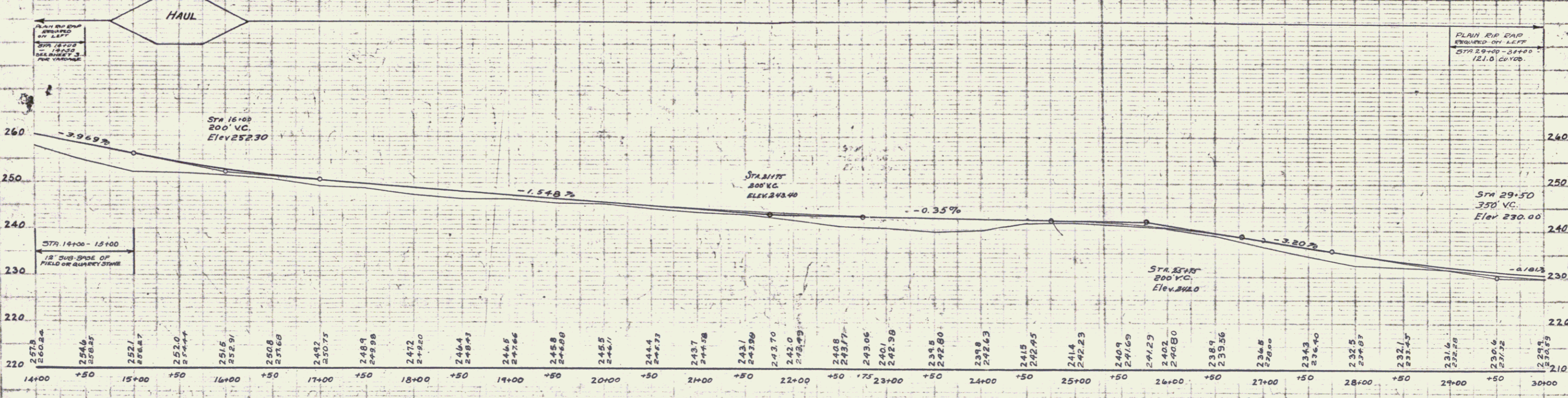
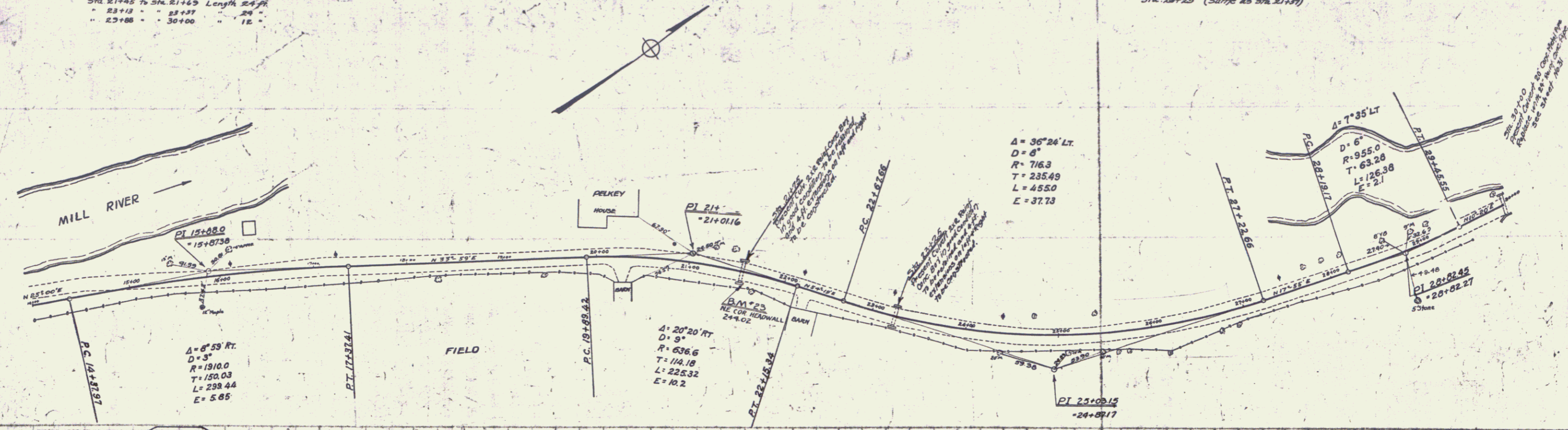
ON RIGHT
 Sta. 21+45 to Sta. 21+63 Length 24 ft
 " 23+12 " " 23+37 " 25 "
 " 23+88 " " 30+00 " 12 "

CABLE GUARD RAIL REQUIRED
ON LEFT
 Sta. 23+12 to Sta. 26+96 Length 384 ft
 " 23+40 " " 30+00 " 50 "
 " 24+00 " " 24+55 " 55 "

NEW CULVERTS REQUIRED
 Sta. 30+00 24" Reinf. Conc. Pipe Culvert 36 ft
 Concrete Class A (1-2-4) 26 cu yds.
 Reinforcing Steel 54 lbs.

CULVERT REPAIRS REQUIRED
 Sta. 21+27 - Extension of barrel to be constructed on left hand right
 Concrete Class A (1-2-4) 4.6 cu yds.
 Reinforcing Steel 281 lbs.
 Sta. 28+25 (same as Sta. 21+27)

NO. SHEETS	NO. SHEETS	NO. SHEETS	NO. SHEETS	TOTAL SHEETS
1	1	1	1	4
PROJECT NO. 110A 1988				SHEET NO. 64



BM. NO 23 N.E. Con. of Culvert Headwall at Sta. 21+58.5 Elev. 247.02

SERIES F No 110A
 SHEET 64 OF 64