

INDEX OF SHEETS

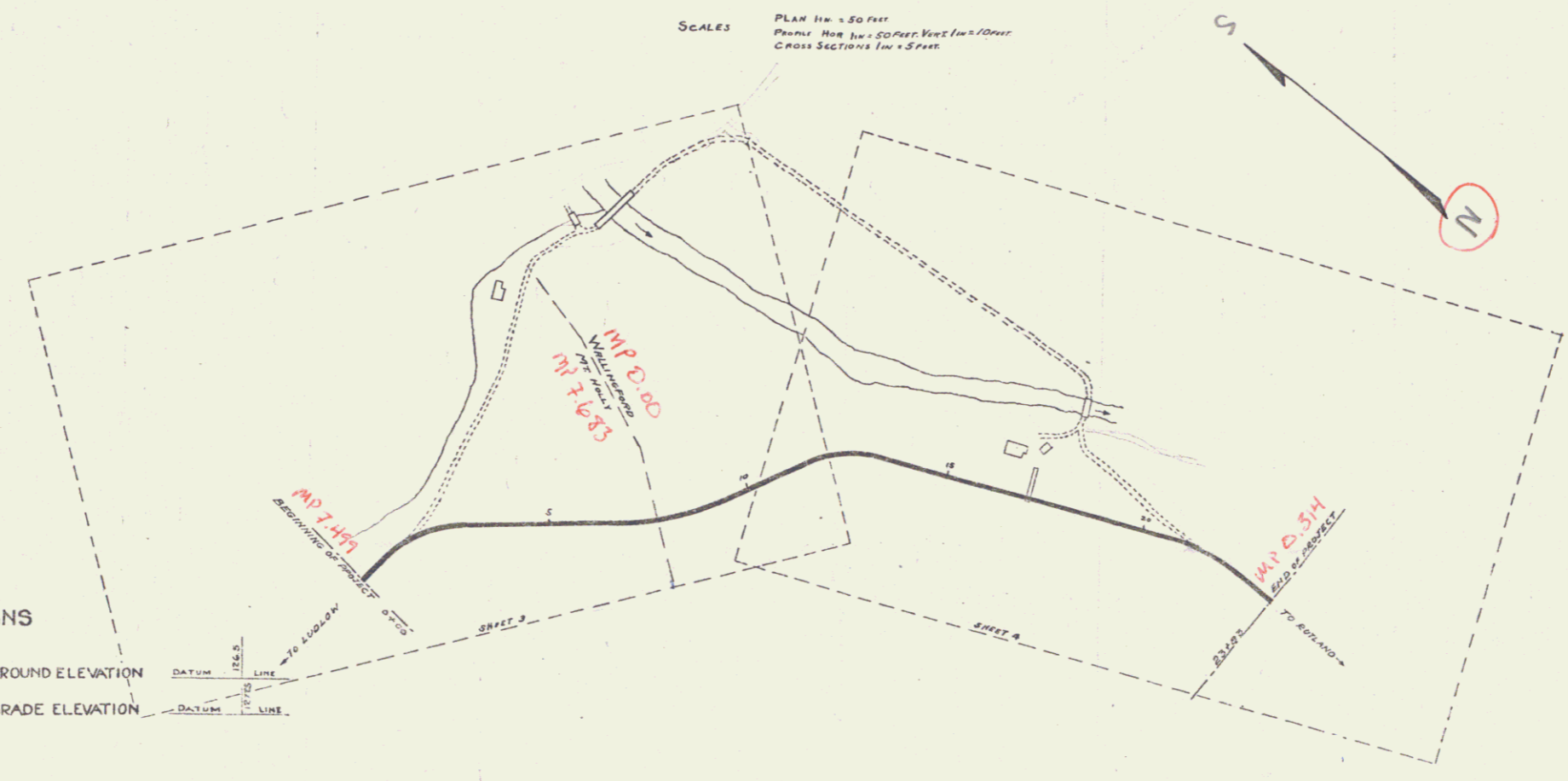
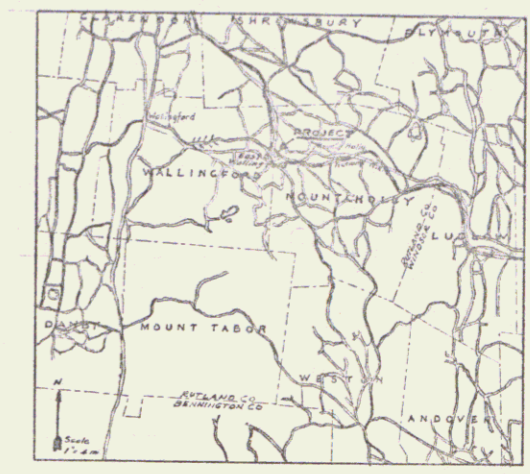
SHEET NO.	TITLE PAGE
2	TYPICAL CROSS-SECTION OF IMPROVEMENT
3	PLAN AND PROFILE STA. 0+00 TO STA. 11+00
4	" " 11+00 " " 23+83
5-7	CROSS SECTIONS

FED. ROAD DIST. NO.	STATE	FED. AID PROJ. NO.	TOTAL SHEETS	TOTAL SHEETS
9	Vt.	57	1	7

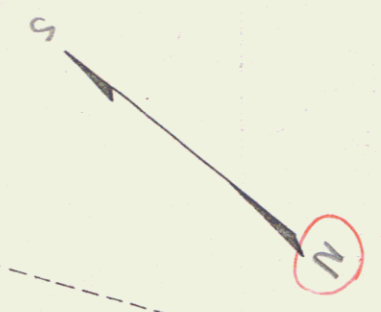
STATE OF VERMONT
STATE HIGHWAY DEPARTMENT

PLAN AND PROFILE OF PROPOSED
STATE HIGHWAY
FEDERAL AID PROJECT

TOWNS OF
WALLINGFORD AND MT. HOLLY
RUTLAND—LUDLOW ROAD
FROM JOSEPH BULLEY HOUSE TO WILL COLE HOUSE



SCALES
PLAN 1" = 50 FEET
PROFILES 1" = 50 FEET VERT. 1" = 10 FEET
CROSS SECTIONS 1" = 5 FEET



RIGHT-OF-WAY DIVISION
TOWN FILE
PERPETUAL
Rte
TOWN OF VT 103
(To Be Returned To R.O.W. Division)

CONVENTIONAL SIGNS

- COUNTY LINE
- TOWN LINE
- FENCE LINE
- STONE WALL
- UNFENCED PROPERTY
- GUARD RAIL
- TRAVELED WAY
- RAILROAD
- RETAINING WALL
- CENTER LINE
- SURVEY LINE
- CULVERT
- DROP INLET
- TROLLEY POLE
- POWER POLE
- TELEPHONE POLE
- TREES
- HEDGE

GROUND ELEVATION
GRADE ELEVATION

CURVE DATA
DEFLECTION ANGLE Δ
DEGREE OF CURVE D.
RADIUS OF CURVE R.
TANGENT DISTANCE T.
LENGTH OF CURVE L.
EXTERNAL DISTANCE E.
POINT OF INTERSECTION P.I.
POINT OF CURVE P.C.
POINT OF TANGENT P.T.

LAYOUT 1" = 200 FT

Wallingford + Mt. Holly

Wallingford

Submitted by order of the State Highway Board
CHIEF ENGINEER
DEPARTMENT OF HIGHWAYS

Project **F 51**
Pin # **00R117**
Route **VT103**
Date **1/1/1922**

RECOMMENDED
DISTRICT ENGINEER
BUREAU OF PUBLIC ROADS
RECOMMENDED FOR APPROVAL
CHIEF ENGINEER
BUREAU OF PUBLIC ROADS
APPROVED
DIRECTOR - BUREAU OF PUBLIC ROADS

SERIES E No. FILED
SHEET **1** OF 7

DIST. # 3 PLANS

TYPICAL CROSS-SECTIONS
Scale 1 inch = 2 1/2 feet

GRAVEL SECTION

Sta. 0+00 to 0+36.8 = 36.8 FT
0+36.8 to 0+89.3 = 52.5
0+89.3 to 10+49.6 = 114.0
10+49.6 to 20+55.6 = 106.0
20+55.6 to 22+78.6 = 108.4
TOTAL = 423.7

GRAVEL SECTION ON CURVE

0+36.8 to 3+31.2 = 294.4 FT $E_2 = 1.0$
3+31.2 to 8+35.6 = 504.4
8+35.6 to 14+52.8 = 617.2
14+52.8 to 22+78.6 = 825.8
TOTAL = 2242.0

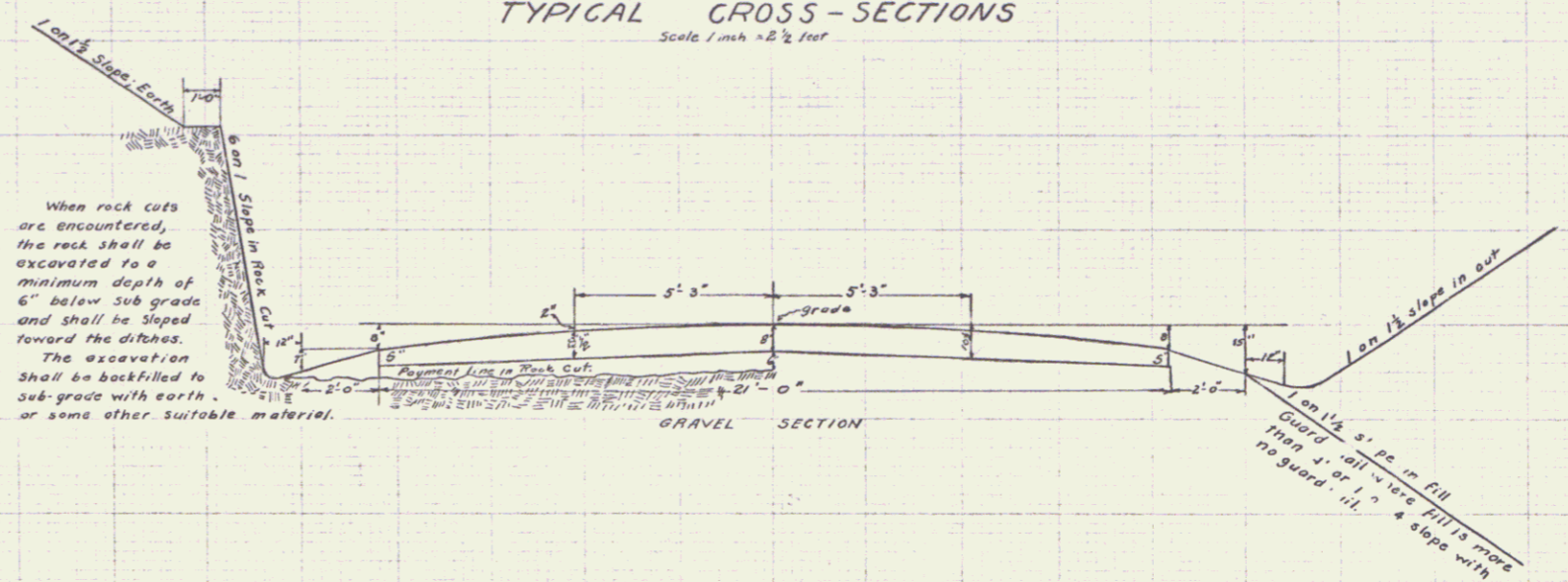
LENGTH OF PROJECT 2370.1 FT.

APPROXIMATE SUMMARY OF QUANTITIES

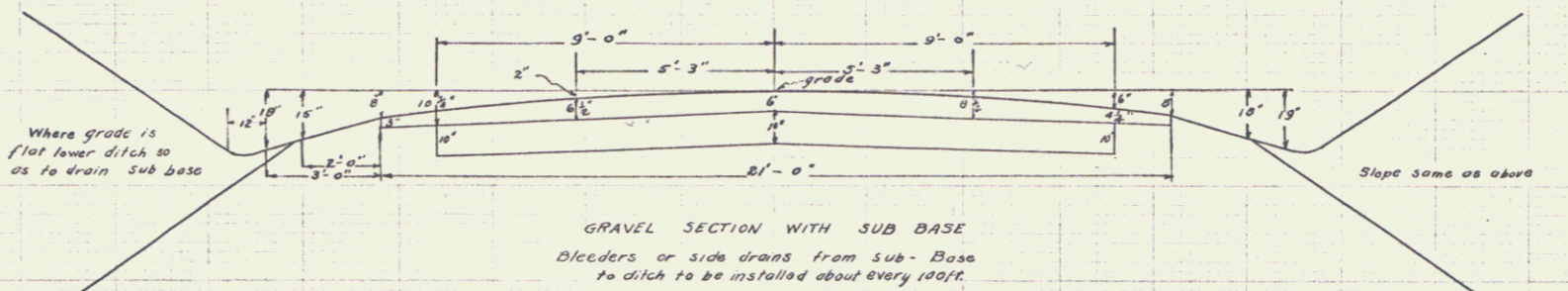
EARTH EXCAVATION	2158 cu. yds.
GRAVEL SURFACE COURSE	1100 "
CONCRETE CLASS "A" (1-2-4)	9.0 "
CONCRETE CLASS "B" (1-2-3)	22.0 "
WOODEN GUARD RAIL	522 Lin. ft.
16" CORR. IRON PIPE CHALKPT	34 "
10"	20 "

EXTRA QUANTITIES TO BE USED IF NECESSARY

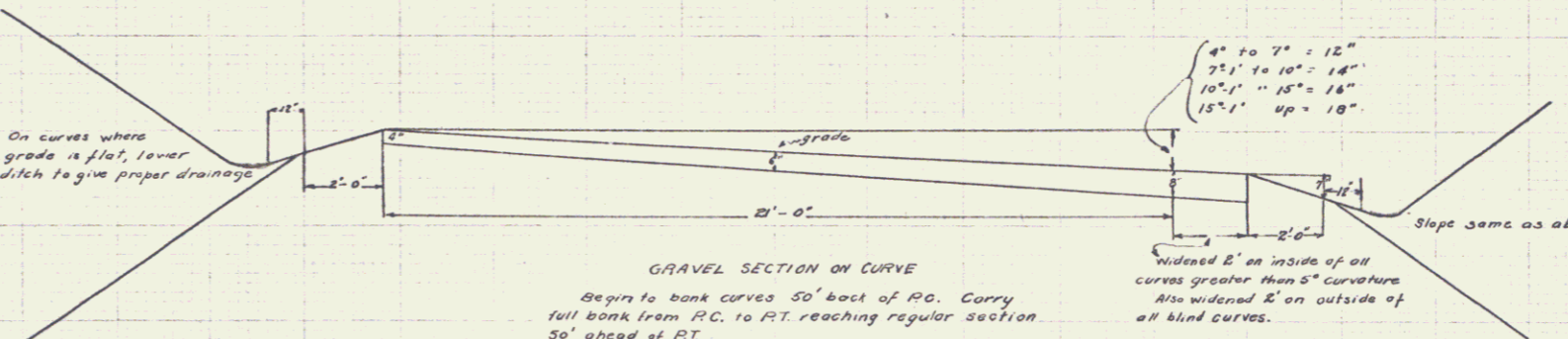
EARTH EXCAVATION	250 cu. yds.
RAIL FIBROVATION	100 "
GRAVEL	250 "
SURFACE OF FIELD OR QUARRY STONE	250 "
CONCRETE CLASS "A" (1-2-4)	5 "
CONCRETE CLASS "B" (1-2-3)	7 "
STANDARD UNDERDRAIN	250 Lin. ft.



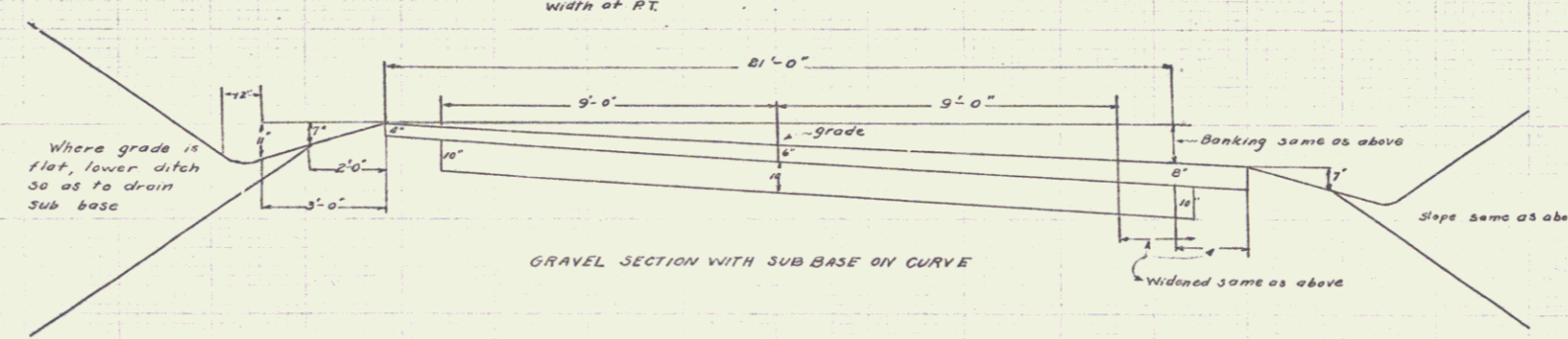
GRAVEL = 15.31 sq. ft.



GRAVEL = 10.21 sq. ft.
SUB BASE = 15.31 sq. ft.



GRAVEL = 11.06 sq. ft.



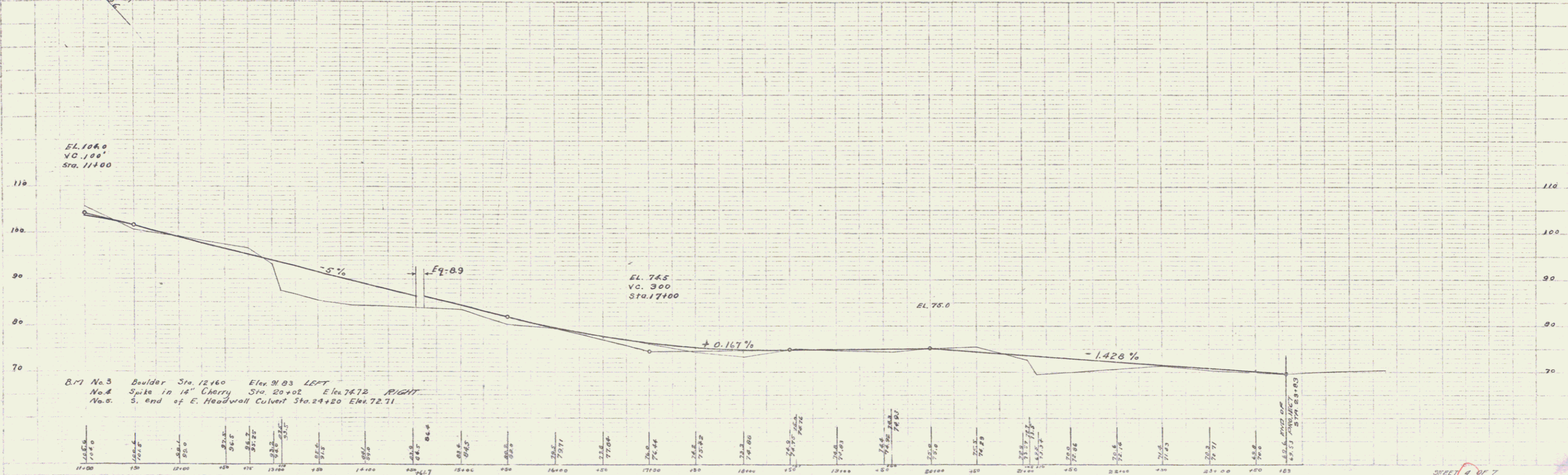
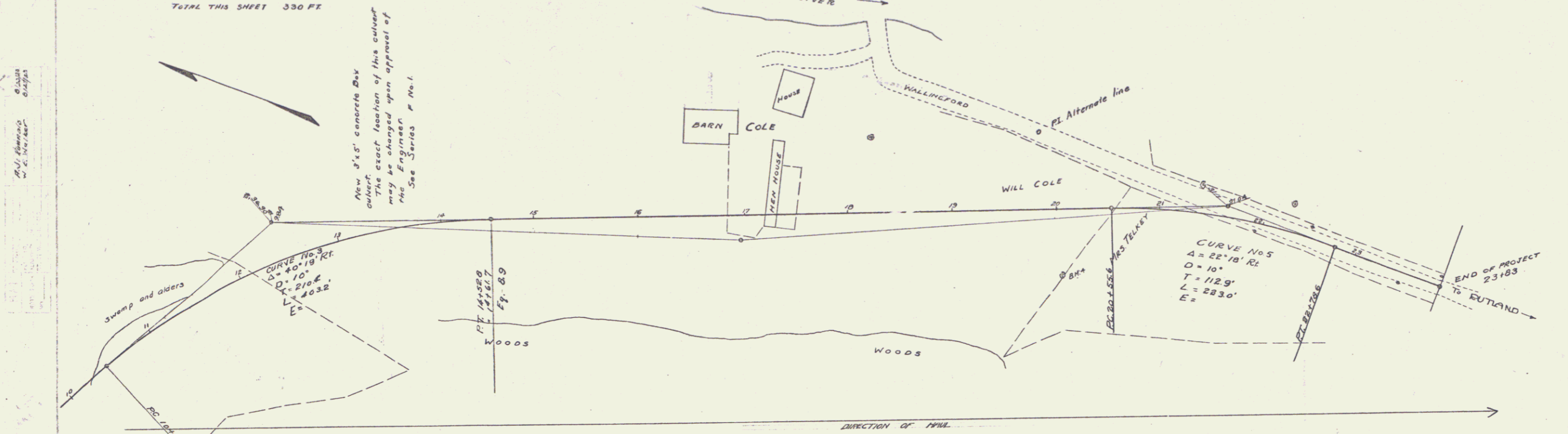
GRAVEL = 11.06 sq. ft.
SUB BASE = 16.67 sq. ft.

DESIGNED J. W. DIX 10-24-23
CHECKED A. D. BISHOP 11-1-23
TRACED E. C. GLYNNON 10-25-23
SERIES F. NO. 51 FILED
SHEET 2 OF 7

RD. ROAD DIST. NO.	STATE	FED. AID PROJ. NO.	FISCAL YEAR	SHEET NO.	TOTAL SHEETS
1	VT.	1-57	1922	4	7

GUARD RAIL REQUIRED ON LEFT.
 Sta. 12150 to Sta 15156 266 FT
 ON FRONT
 Sta 13128 to Sta 13192 64 FT
TOTAL THIS SHEET 330 FT

NEW CULVERT REQUIRED
 Sta. 13195 3x3 Concrete Length 32.0 FT
 1-2-4 Concrete 0.352 cu yds.
 1-2-5 " 24.034 " "



SHEET 4 OF 7
 SERIES # NO. 51 FILED