

**GUARD RAIL REQUIRED**

**ON LEFT**

Sta 4130 to Sta. 4162 24 FT  
 Sta 5130 to Sta. 6+22 72 FT

**ON RIGHT**

Sta 4+30 to Sta 4162 24 FT  
 Sta 5150 to Sta 6+30 72 FT

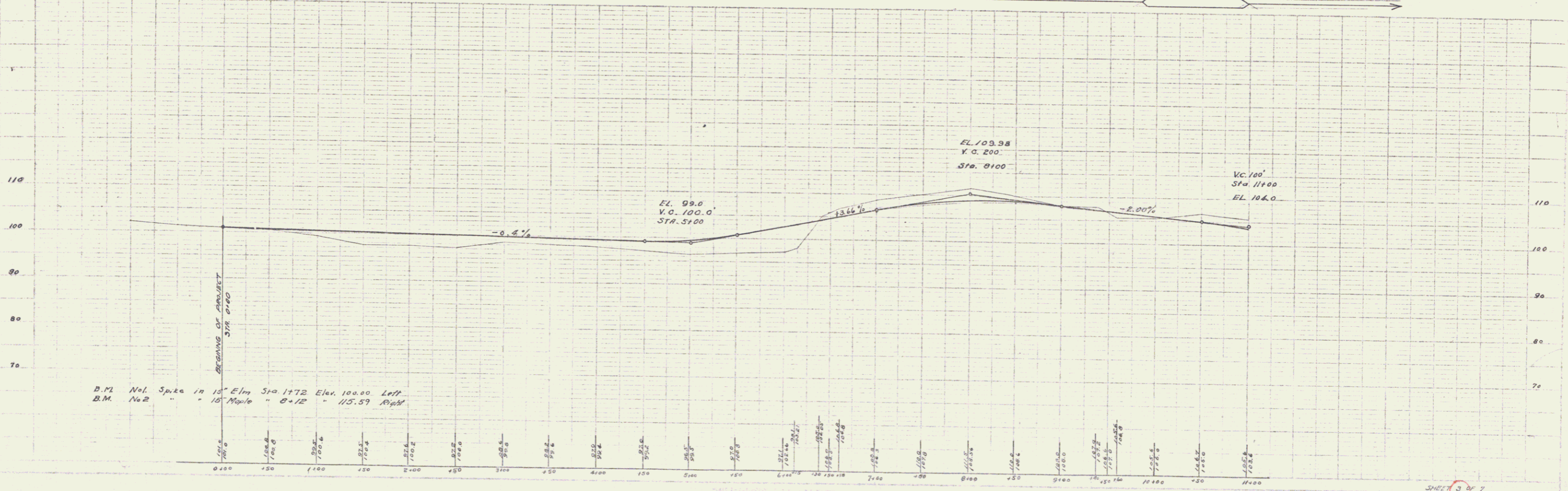
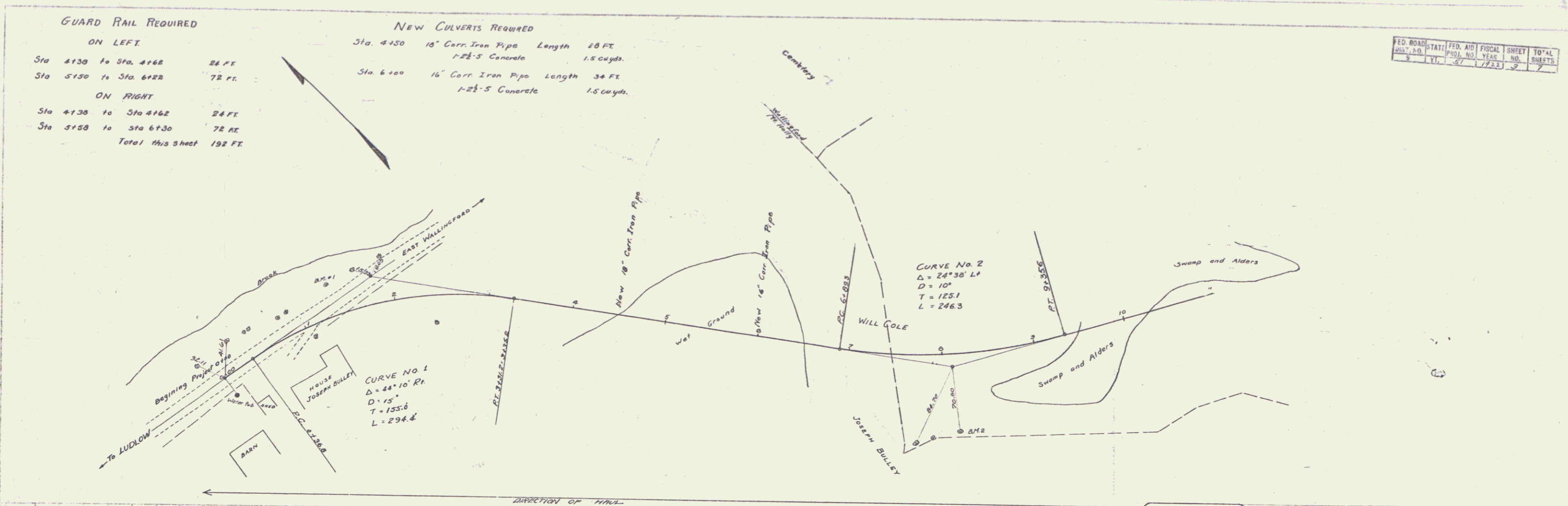
Total this sheet 192 FT

**NEW CULVERTS REQUIRED**

Sta. 4+50 18" Corr. Iron Pipe Length 28 FT  
 1-2'-5" Concrete 1.5 cu yds.

Sta. 6+00 16" Corr. Iron Pipe Length 34 FT  
 1-2'-5" Concrete 1.5 cu yds.

FED. ROAD DIST. NO.	STATE	FED. AID PROJ. NO.	FISCAL YEAR	SHEET NO.	TOTAL SHEETS
3	VT.	87	1923	3	7



B.M. No. 1 N.W. Spike in 15" Elm Sta 1+72 Elev. 100.00 Left  
 B.M. No. 2 " " 15" Apple " 8+72 " 115.59 Right