

INDEX OF SHEETS

SHEET NO.	TITLE PAGE
1	TYPICAL CROSS-SECTION OF IMPROVEMENT (Grading, Drainage, Base & Guard Rail, with Double Tack Coat of Refined Tar, (Item 29))
2	BANKING AND WIDENING TABLES
3	PLAN AND PROFILE
4-11	ABUTMENT DETAILS
12	STANDARD STRUCTURE SHEET
13	S.I.B. 24 - 59' SPAN
14	S.B. 5 C - CABLE GUARD RAIL
15	S.B. 11 - BARRICADES, SIGNS & LIGHTS
16	S.B. 20 - DETAIL A.L. & GENERAL NOTES
17	S-28 - PIPE CULVERTS
18	S-30 - GUARD RAIL
19	S-30-A - F.A. MARKERS
20	S-40 - BARRICADES, SIGNS & LIGHTS
21	S-41 - ROUNDING OF SLOPES
22-71	CROSS-SECTIONS

STANDARD STRUCTURE SHEETS
APPROVED BY THE CHIEF ENGINEER
S-28 JULY 11, 1933
S-30 AUGUST 15, 1934

STATE OF VERMONT
STATE HIGHWAY DEPARTMENT

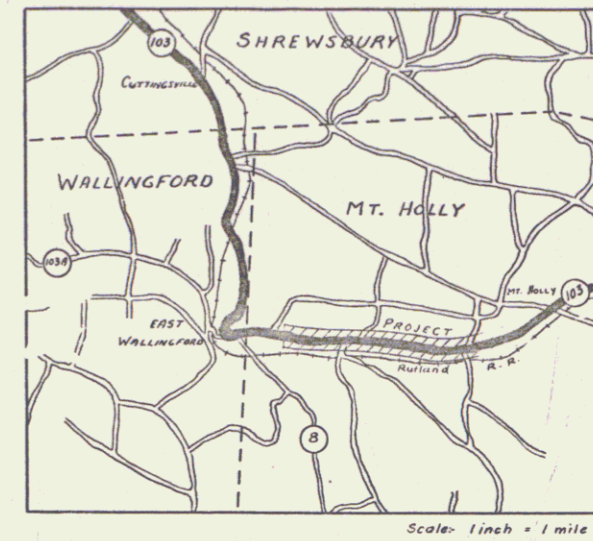
PLAN AND PROFILE OF PROPOSED
STATE HIGHWAY
FEDERAL AID PROJECT

TOWN OF MT. HOLLY
RUTLAND-LUDLOW ROAD

BEGINNING AT A POINT ON ROUTE 103, 1175.0 FT.
EAST OF THE WALLINGFORD-MT. HOLLY TOWN LINE,
AND EXTENDING SOUTHEASTERLY 2.189 MILES.

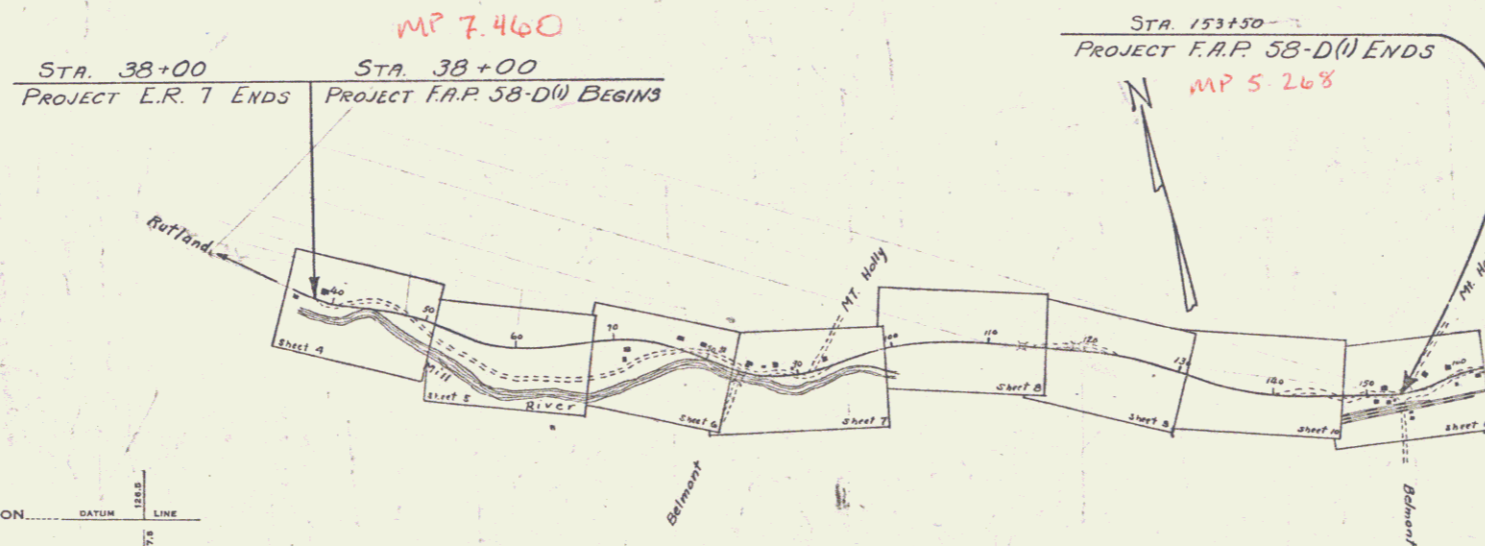
ROADWAY - 11500.7 FT. = 2.178 MILES
BRIDGE - 59.0 FT. = 0.011 MILES
TOTAL LENGTH - 11559.7 FT. = 2.189 MILES

FED. ROAD DIST. NO.	STATE	FED. AID PROJ. NO.	FISCAL YEAR	SHEET NO.	TOTAL SHEETS
9	Vt.	58-D(1)	1940	1	71



(To Be Returned To R.O.W. Division)
Town of VT 103
PERMANENT
TOWN FILE
RIGHT-OF-WAY DIVISION

RECORD PLANS
By: N.H. Chase



COUNTY LINE
TOWN LINE
FENCE LINE
STONE WALL
UNFENCED PROPERTY
GUARD RAIL
TRAVELED WAY
RAILROAD
RETAINING WALL
CENTER LINE
SURVEY LINE
CULVERT
DROP INLET
TROLLEY POLE
POWER POLE
TELEPHONE POLE
TREES
HEDGE

GROUND ELEVATION	DATUM	LINE
GRADE ELEVATION	DATUM	LINE

CURVE DATA	
DEFLECTION ANGLE	Δ
DEGREE OF CURVE	D
RADIUS OF CURVE	R
TANGENT DISTANCE	T
LENGTH OF CURVE	L
EXTERNAL DISTANCE	E
POINT OF INTERSECTION	P. I.
POINT OF CURVE	P. C.
POINT OF TANGENT	P. T.
POINT ON TANGENT	P. O. T.

SCALES	
TITLE	1" = 1000'
TYPICAL	1" = 8'
PLAN	1" = 50'
PROFILE HORIZONTAL	1" = 10'
PROFILE VERTICAL	1" = 5'
CROSS SECTIONS	1" = 5'

RECORD PLANS
Mt. Holly - F.A.P. 58-D(1)
Contractor - Fry Paving Co., Inc.

APPROVED: July 22, 1940
H. H. Chase
COMMISSIONER OF HIGHWAYS

SUBMITTED BY ORDER OF THE STATE HIGHWAY BOARD

Pin # 00R115

Route VT103

Date 7/10/1940

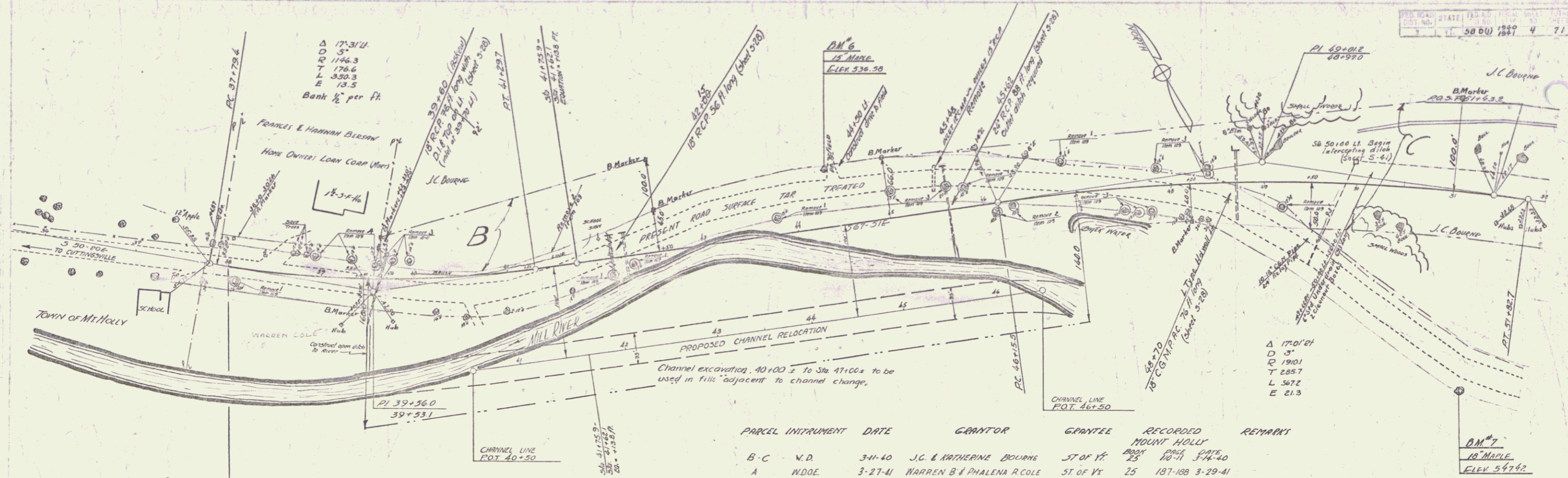
RECOMMENDED FOR APPROVAL
DISTRICT ENGINEER
PUBLIC ROADS ADMINISTRATION
FEDERAL WORKS AGENCY

APPROVED
DISTRICT HIGHWAY COMMISSIONER
PUBLIC ROADS ADMINISTRATION
FEDERAL WORKS AGENCY

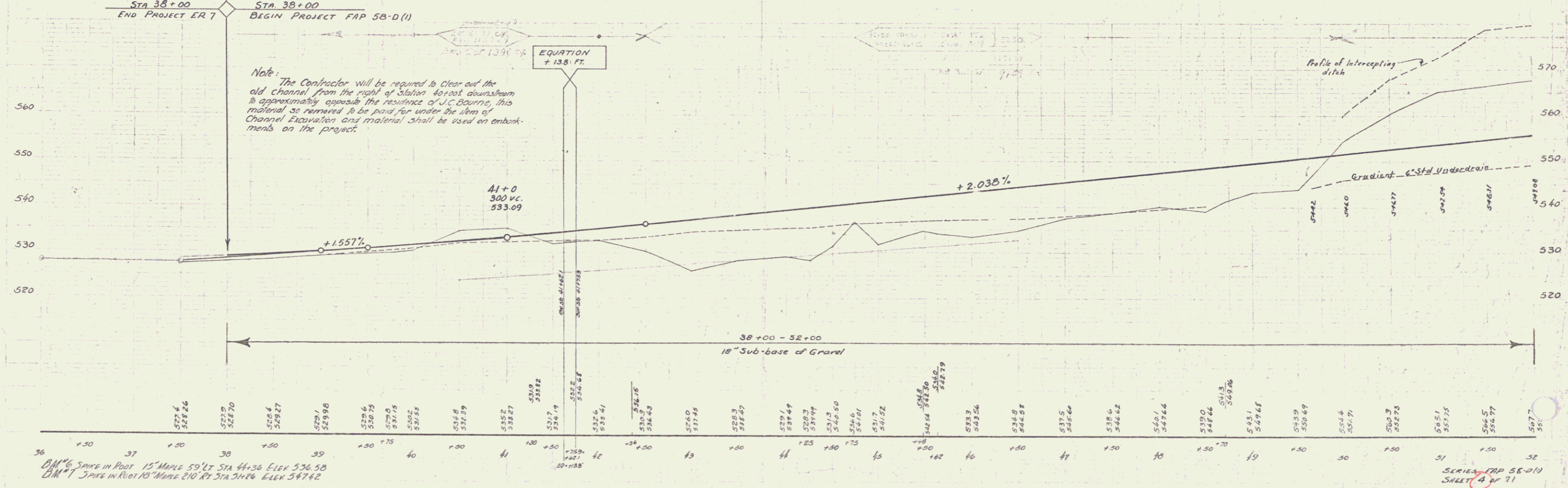
THESE PLANS ARE SUBJECT TO SUCH REVISIONS AS MAY BE REQUIRED BY THE PUBLIC ROADS ADMINISTRATION OR THE COMMISSIONER OF HIGHWAYS.
CONSTRUCTION IS TO BE CARRIED ON IN ACCORDANCE WITH THE PLANS AND THE STANDARD ROAD AND BRIDGE SPECIFICATIONS OF 1935, AS APPROVED DECEMBER 29TH, 1936 BY THE PUBLIC ROADS ADMINISTRATION, INCLUDING ALL SUBSEQUENT APPROVED REVISIONS AND SUCH REVISED SPECIFICATIONS AND SPECIAL PROVISIONS AS ARE SUBMITTED WITH THE PLANS.

APPROVED: [Signature] ROAD ENGINEER
APPROVED: [Signature] DISTRICT HIGHWAY COMMISSIONER
SERIES F.A.P. NO. 58-D(1) FILED SHEET 1 OF 71

DIST. #3 PLANS

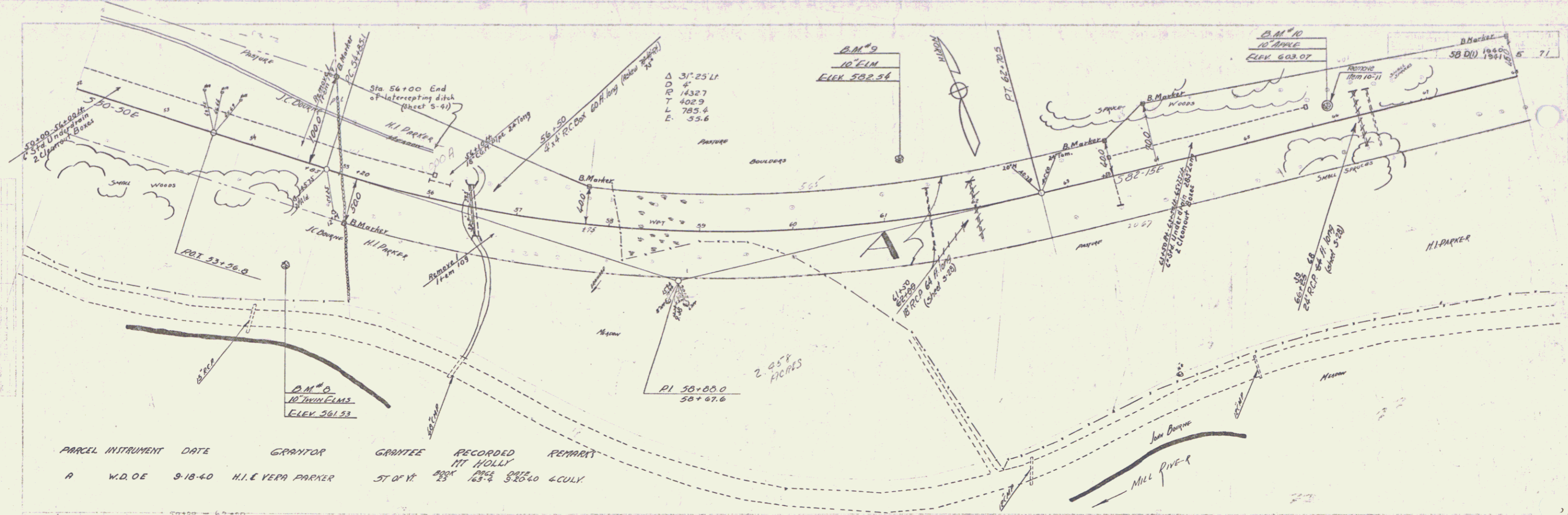


PARCEL INSTRUMENT	DATE	GRANTOR	GRANTEE	RECORDED MOUNT HOLLY	REMARKS
B-C	N.D.	J.C. & KATHERINE BOURNE	ST. OF VT.	187-188	3-29-41
A	W.D.O.E.	WARREN B & PHAENA R COLE	ST. OF VT.	25	187-188 3-29-41

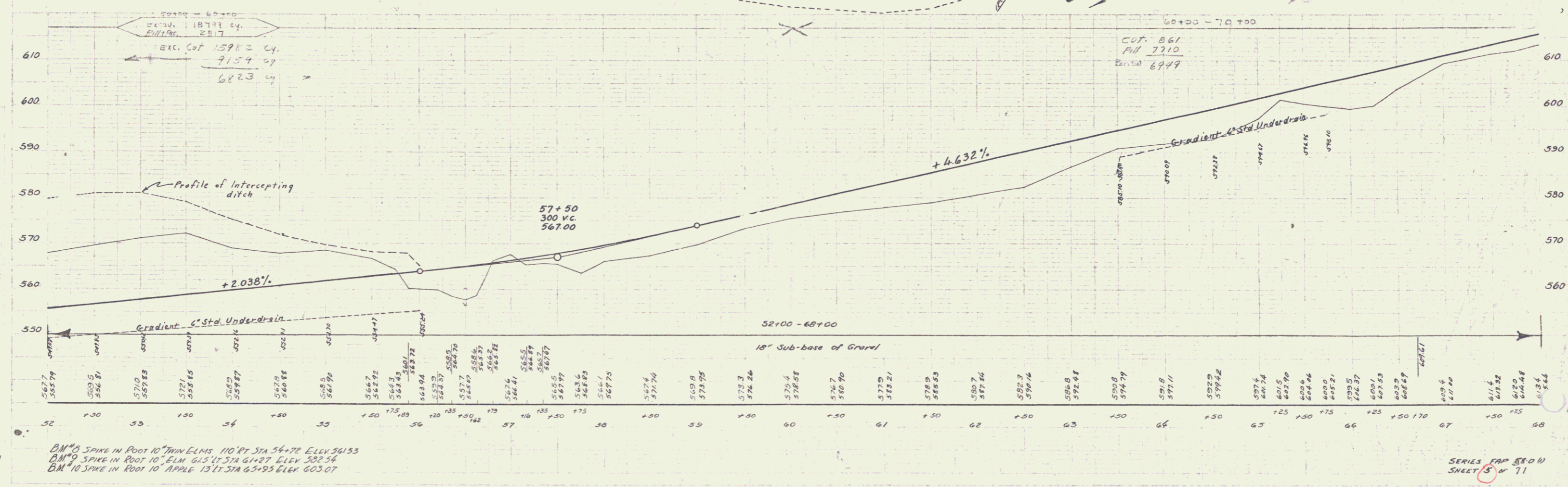


DM #6 SPIKE IN ROOT 15" MAPLE 59' LT STA 41+36 ELEV 536.58
 DM #7 SPIKE IN ROOT 10" MAPLE 210' RT STA 51+26 ELEV 547.62

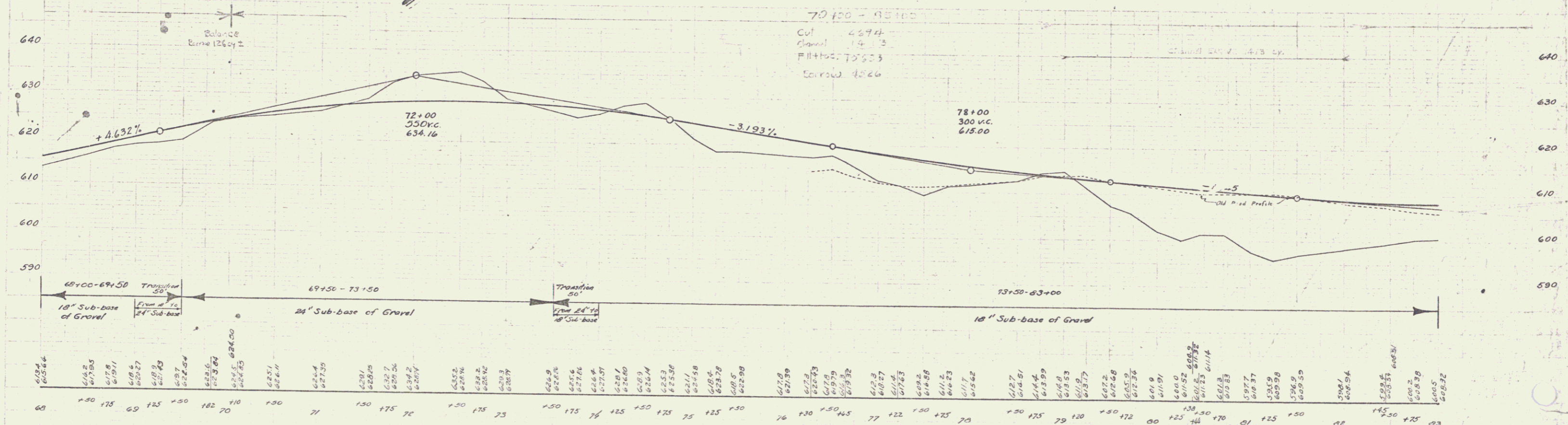
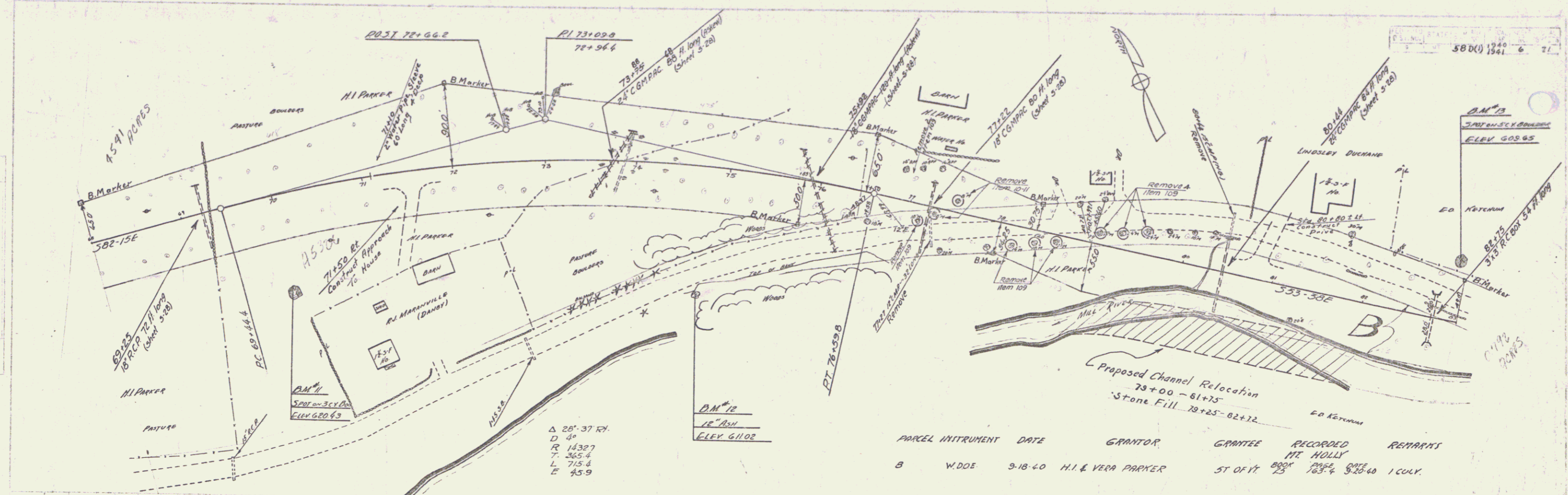
SERIES MAP 58-D11
 SHEET 4 OF 71



PARCEL	INSTRUMENT	DATE	GRANTOR	GRANTEE	RECORDED	REMARKS
A	W.D.O.E	9-18-40	H.I. & VERA PARKER	ST OF V.	BOOK 23 PAGE 163-2	DATE 5/26/40 6 CULV.

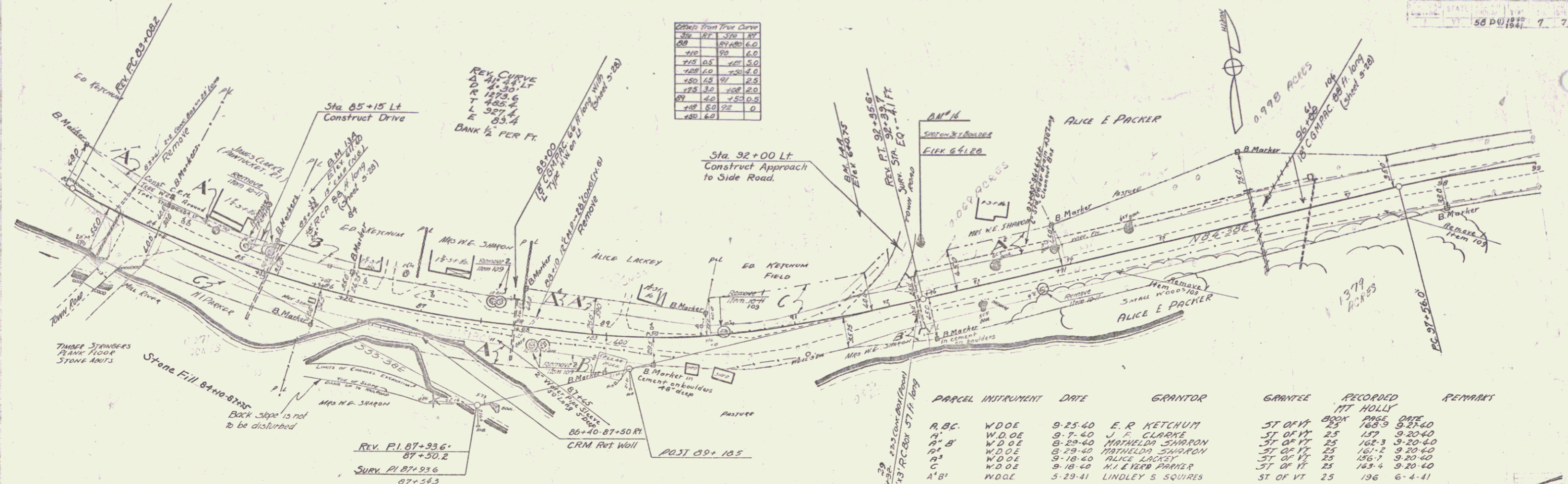


BM#8 SPIKE IN POOT 10" THIN ELMS 110' PT STA 54+72 ELEV 561.53
 BM#9 SPIKE IN POOT 10" ELMS 61.5' PT STA 61+27 ELEV 582.54
 BM#10 SPIKE IN POOT 10" APPLE 13' PT STA 65+95 ELEV 603.07

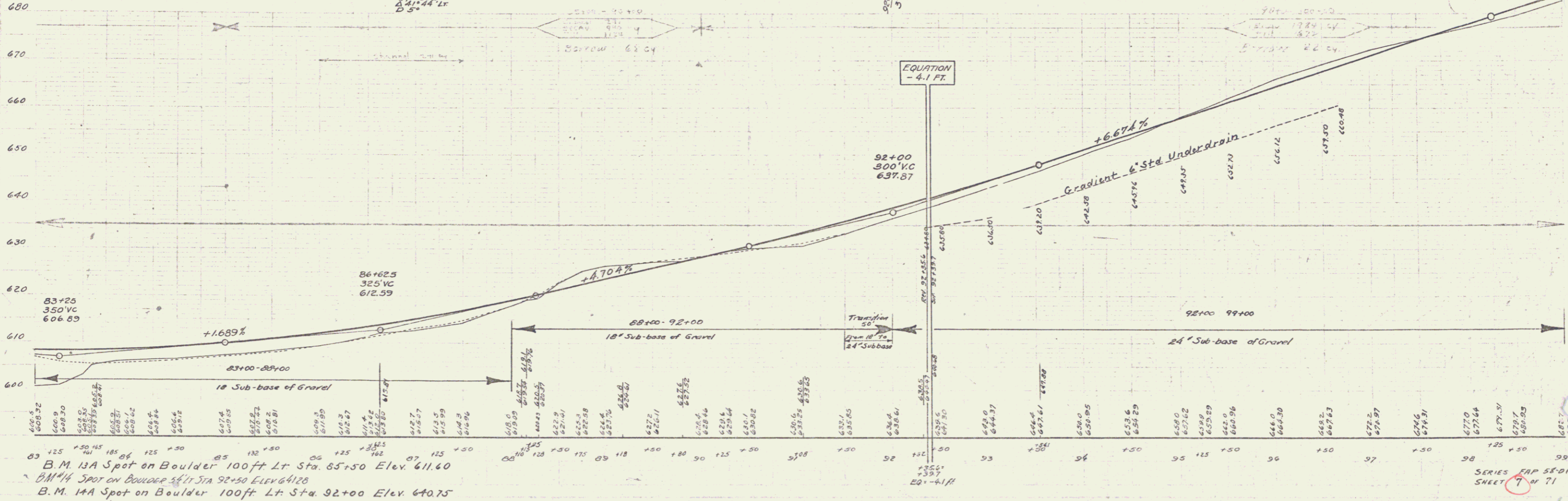


DM #1 SPOT ON BOULDER 102 PT STA 70+00 ELEV 620.63
 DM #2 SPOT ON TRUNK 10 PT STA 74+75 ELEV 611.02
 DM #3 SPOT ON BOULDER 59 PT STA 82+89 ELEV 609.65

Grade	From	To	Curve
60	172	370	17'
110	99	60	
125	65	50	
150	60	20	
150	68	25	
175	30	20	
87	60	25	0.5
150	60	22	0
150	60	0	

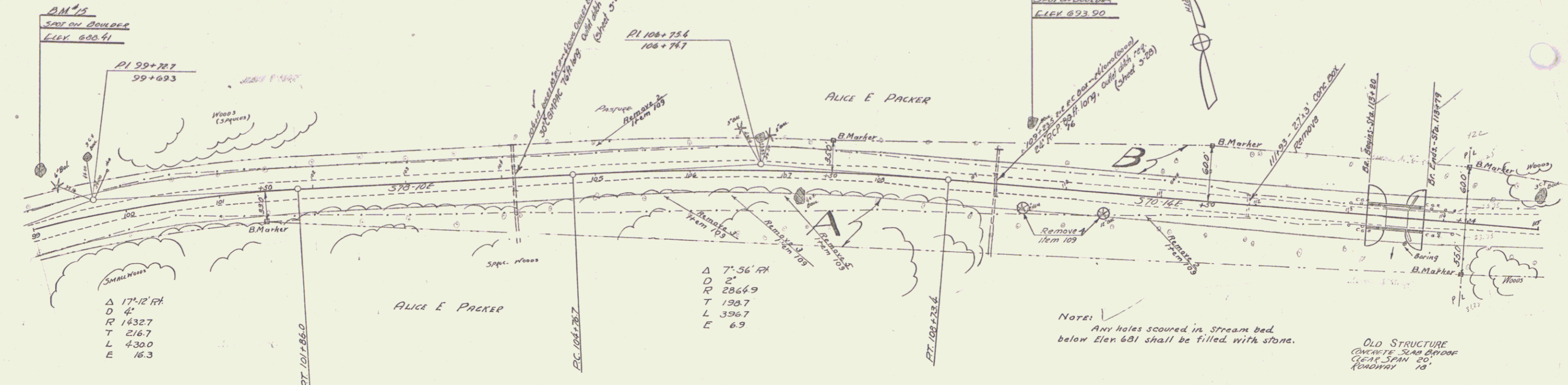


PARCEL INSTRUMENT	DATE	GRANTOR	GRANTEE	RECORDED	REMARKS
A, B, C	9-25-40	E. R. KETCHUM	ST OF VT	188-9	9-25-40
A, B	9-7-40	J. F. CLARKE	ST OF VT	157	9-20-40
A, B	8-20-40	MATHELDIA SHARRON	ST OF VT	162-3	9-20-40
A, B	8-29-40	MATHELDIA SHARRON	ST OF VT	161-2	9-20-40
A, B	9-18-40	ALICE LACKEY	ST OF VT	156-7	9-20-40
A, B	9-18-40	M. E. EVER PARMER	ST OF VT	163-4	9-20-40
A, B	5-29-41	LINDLEY S. SQUIRES	ST OF VT	196	6-4-41



B.M. 13A Spot on Boulder 100ft Lt Sta. 85+50 Elev. 611.60
 B.M. 4 Spot on Boulder 547 Sta. 92+50 Elev. 641.20
 B.M. 14A Spot on Boulder 100ft Lt Sta. 92+00 Elev. 640.75

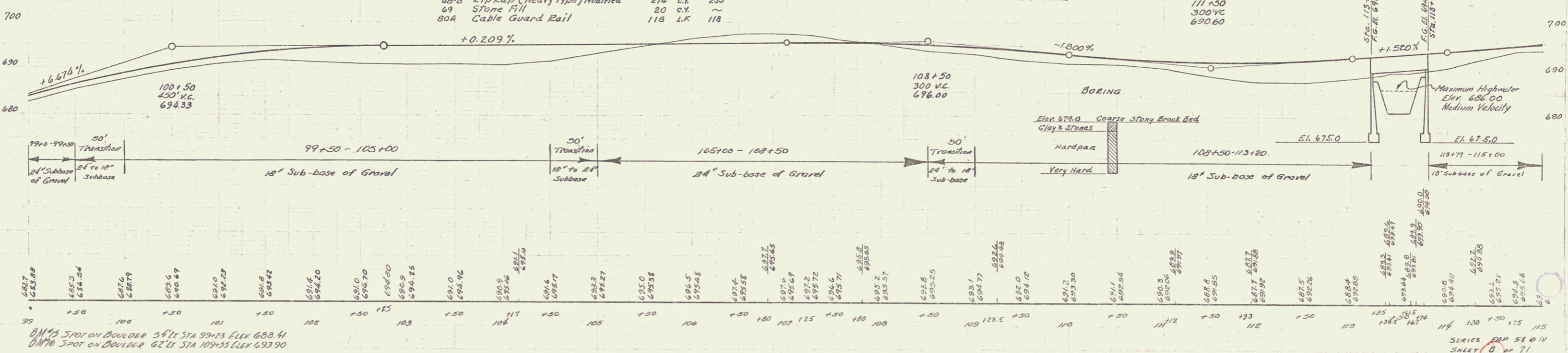
PARCEL INSTRUMENT DATE GRANTOR GRANTEE RECORDED REMARKS
 A.B. G.W.D.G.E. 9-25-40 W.S. SHATTUCK GWR ALICE PACKER STAFF 25 1678 52140 1 CULV



BRIDGE DATA		
Type	PRESENT	PROPOSED
Clear Span	20'-0"	55'-0"
Roadway	18'-0"	24'-0"
Length	21'-0"	39'-0"
Clear Height	9'-0"	9'-0"
Waterway	100'	346'

SUMMARY OF BRIDGE QUANTITIES		
		Final (7/13/33)
15	Channel Excavation	100 C.Y. 366
16	Structure Excavation	130 C.Y. 1263
10B	Temporary Traffic Maintenance of Traffic	1 L.S. 1
41A	Concrete Class 0	85 C.Y. 868
42	Reinforcing Steel	15,678 LBS. 15790
43B	Steel Superstructure (44105')	1 L.S. 1
57	Removal Present Superstr.	1 L.S. 1
68-B	Exp. Exp. (Heavy Type) Modified	214 C.Y. 233
69	Stone Fill	20 C.Y. ~
80A	Cable Guard Rail	119 L.F. 118

- INDEX OF BRIDGE SHEETS
- 1 Plan & Profile
 - 2 Abutment Details
 - 3 S18-24-59 Span
 - 4 S350 - Cable Guard Rail
 - 5 S811 - Entricades & Lights etc.
 - 6 S820 - Detail A, L & Gen. Notes
 - 7-a Cross Sections



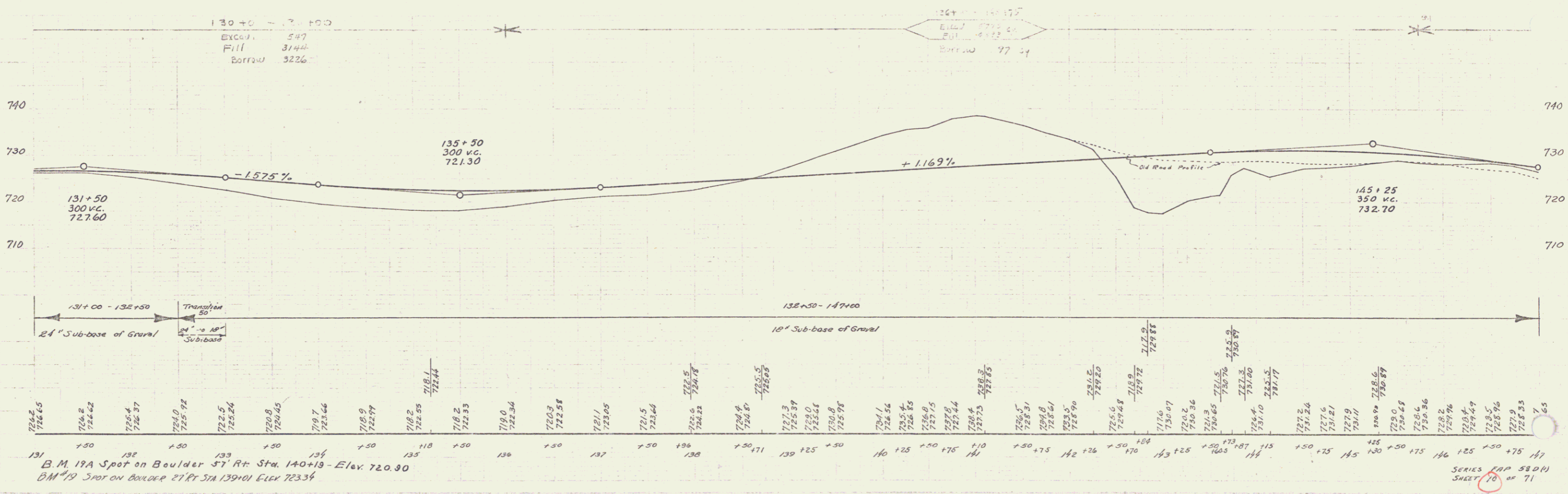
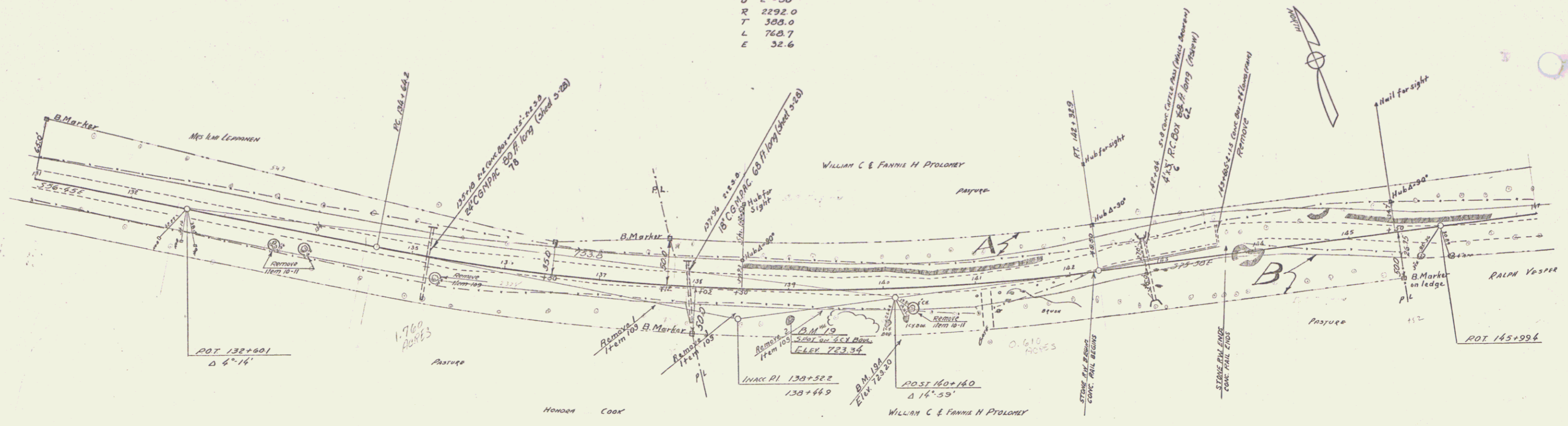
B.M. 15 SPOT ON BOULDER STA 99+23 ELEV. 680.41
 B.M. 16 SPOT ON BOULDER STA 109+55 ELEV. 693.90

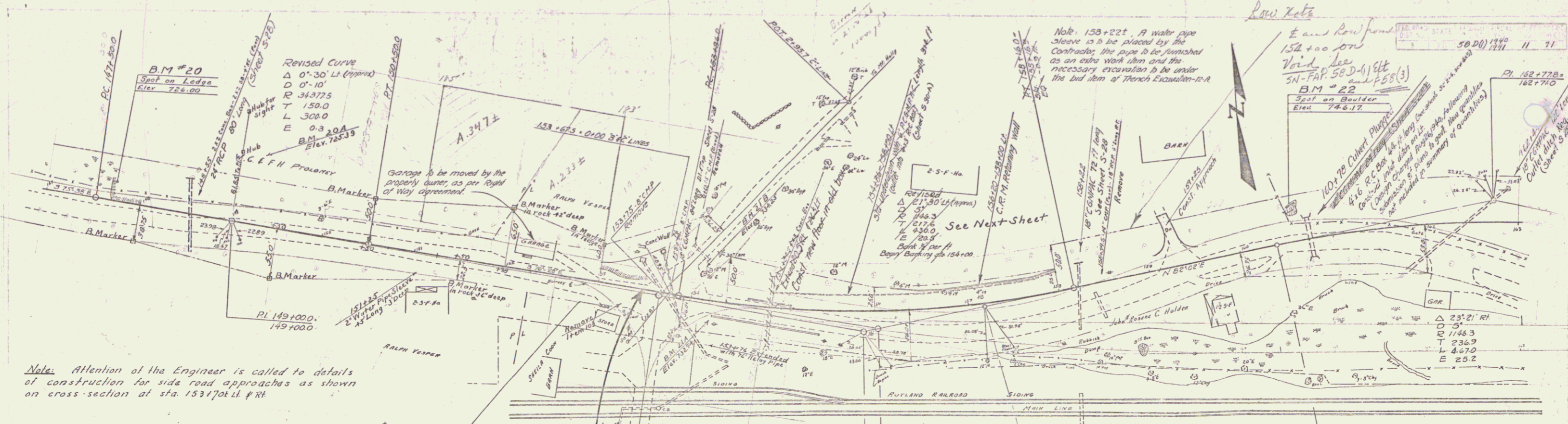
SERIES EXP 58 0 IN SHEET 7 OF 71

PARCEL INSTRUMENT DATE GRANTOR GRANTEE RECORDED REMARKS
 R.B. W.D.G.E. 9-18-40 WILLIAM & FANNIE PROLOVEY ST OF HT MT HOLLY BOOK PAGE DATE
 25 170-1 9-27-40

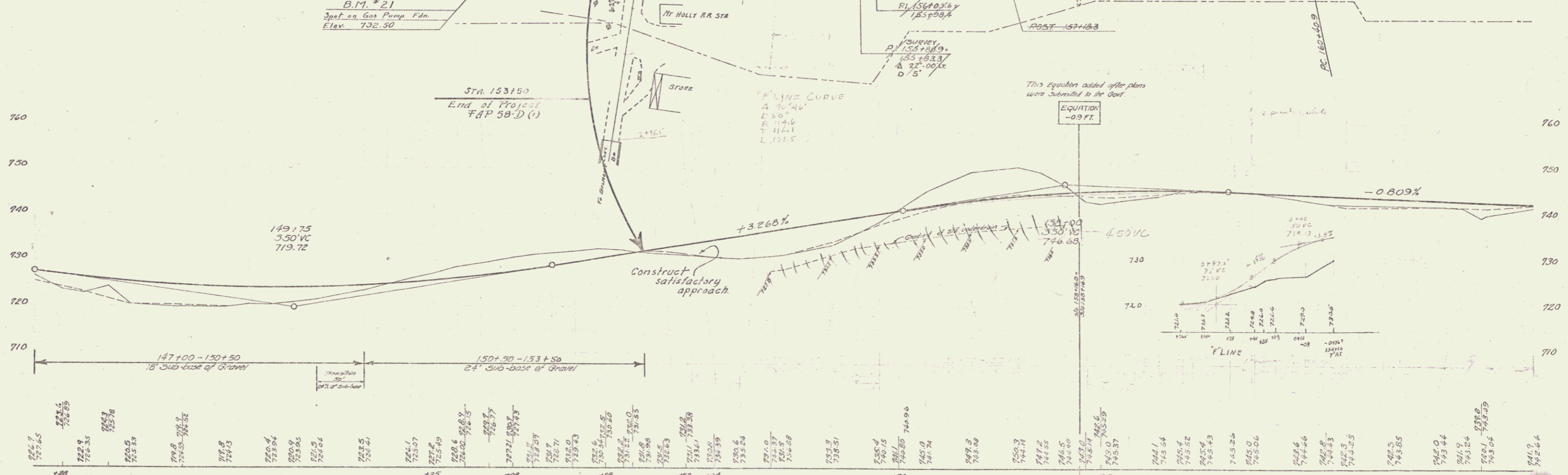
A 19° 13' 11"
 D 2'-30"
 R 2292.0
 T 303.0
 L 768.7
 E 32.6

5800 1940 10 71
 5800 1941 10 71



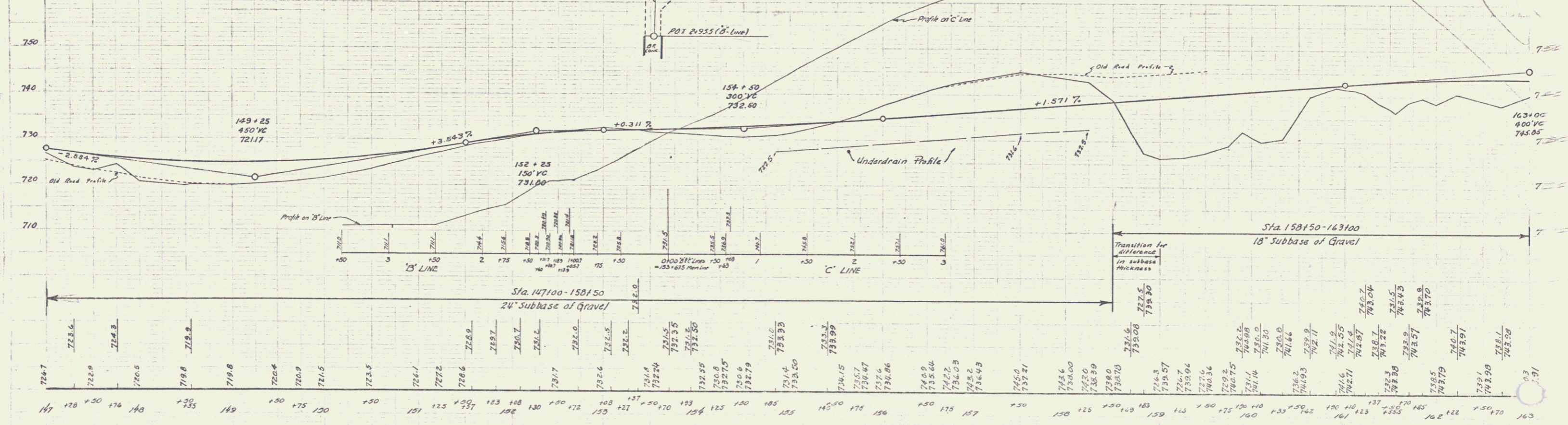
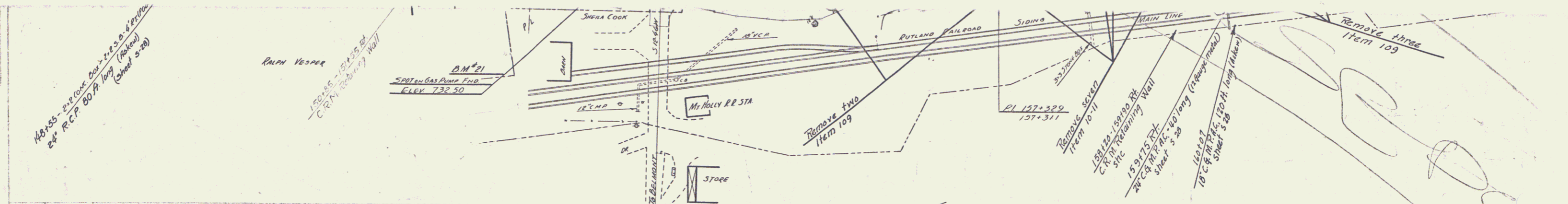
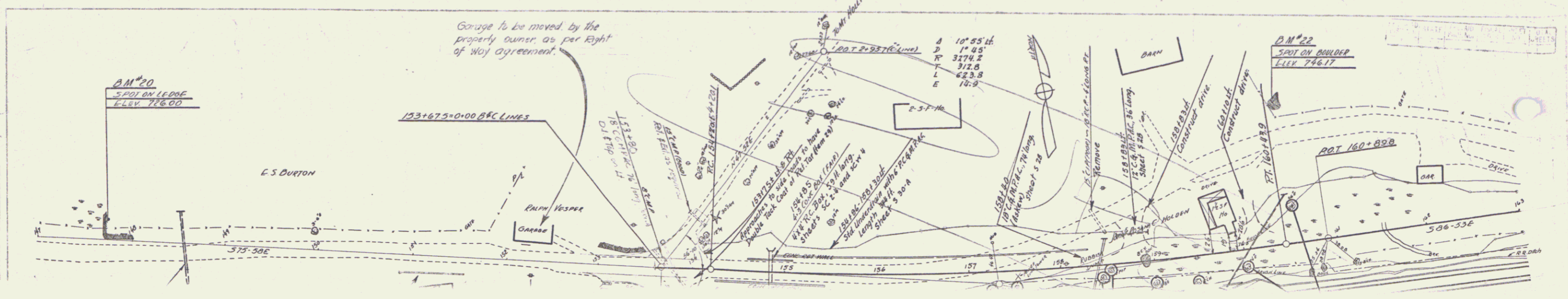


Note: Attention of the Engineer is called to details of construction for side road approaches as shown on cross-section at sta. 153+70 Lt. P.R.



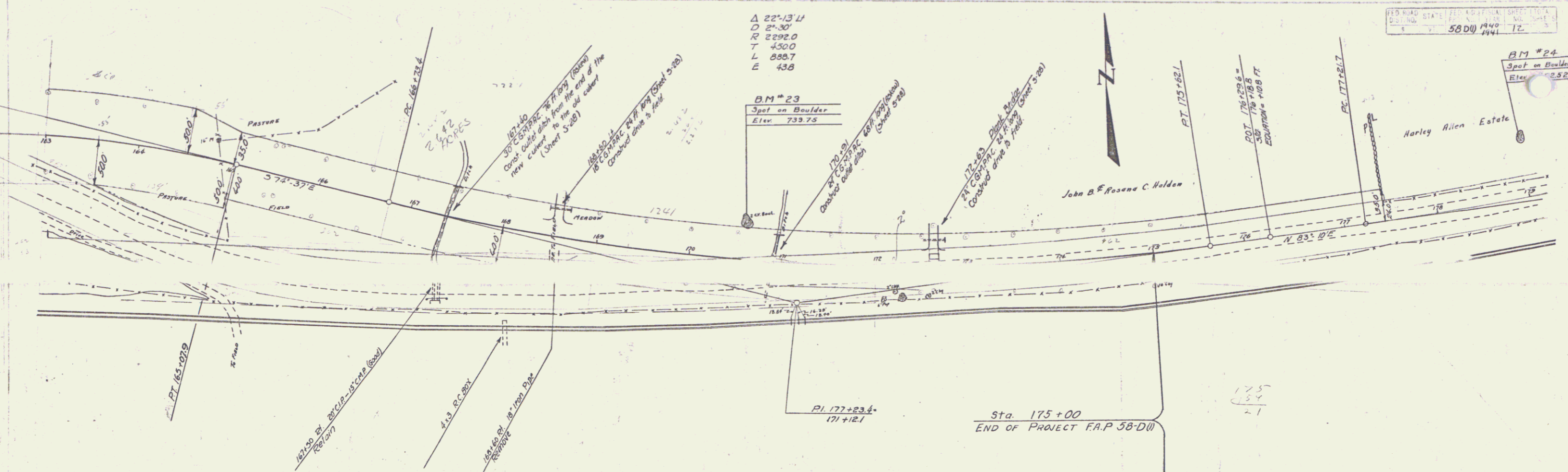
- B.M. #20 Spot on Ledge 21' Lt. Sta. 147+71. Elev. 726.00
- B.M. #21 Spot on Gas Pump Fdn. 13.5' Rt. Sta. 153+05 Elev. 732.50.
- B.M. #22 Spot on Boulder 400' Lt. Sta. 160+63 Elev. 746.17
- B.M. #20A Spot on Boulder 80' Lt. Sta. 149+20 Elev. 725.33
- B.M. #21A Top Ret. Wall Sta. 154+ Elev. 732.94
- B.M. #21B S.I.R. 36" Elm Lt. Sta. 154+00 Elev. 734.25

SERIES E.A.P. 58 D.U.
Sheet 11 of 71
See Next Sheet



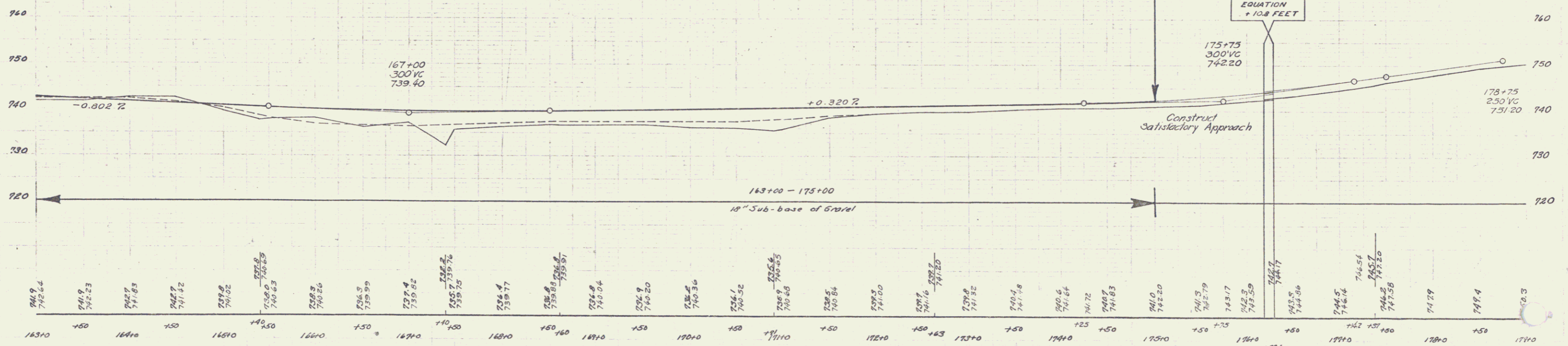
BM #20 Spot on ledge of RT STA 147+71 ELEV 726.00
 BM #21 Spot on Gas Pump End 153+05 RT STA 153+05 ELEV 732.50
 BM #22 Spot on Boulder 149+21 STA 160+50 ELEV 746.17

SERIES MAP 580(1)
 SHEET 1A OF 11

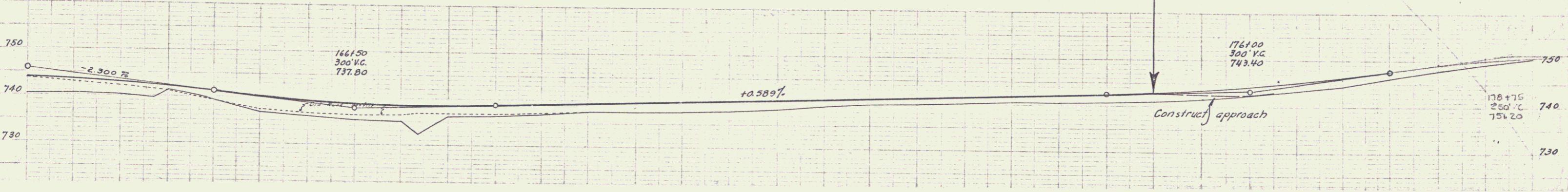
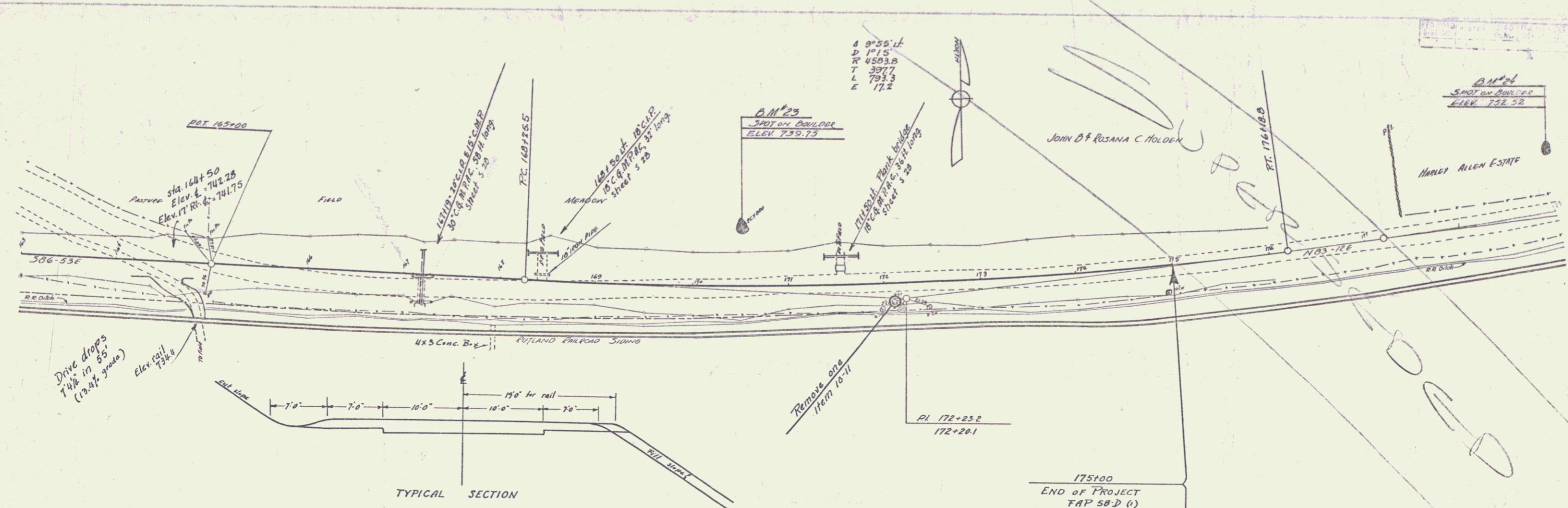


Note: The Contractor will be required after the new road is opened to traffic, to remove the bituminous material from the old road between station 167+00 and 167+50, this work to be paid for under the item of Common Excavation Including Borrow. This material to be used to flatten fill slopes on the project.

Note: The Contractor will be required to remove the sod (estimated at 4' depth) from Sta. 165+00 to Sta. 173+00 within the limits of the new construction and place this material over the old scarified road at Sta. 162+00 to Sta. 167+00 and also over the new cut slopes left of Sta. 156+00 to Sta. 158+00. This work to be paid under Common Excavation including Borrow - item 10-11.



B.M. #23 Spot on Boulder 49' Lt. Sta. 170+59 Elev. 739.75.
 B.M. #24 Spot on Boulder 60' Lt. Sta. 179+00 Elev. 752.52.



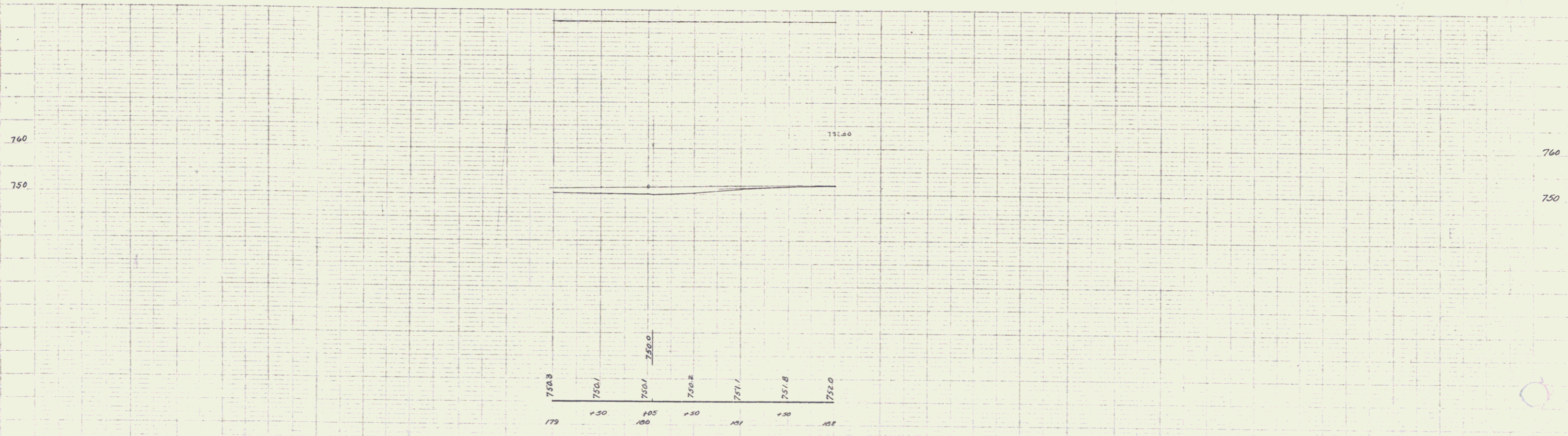
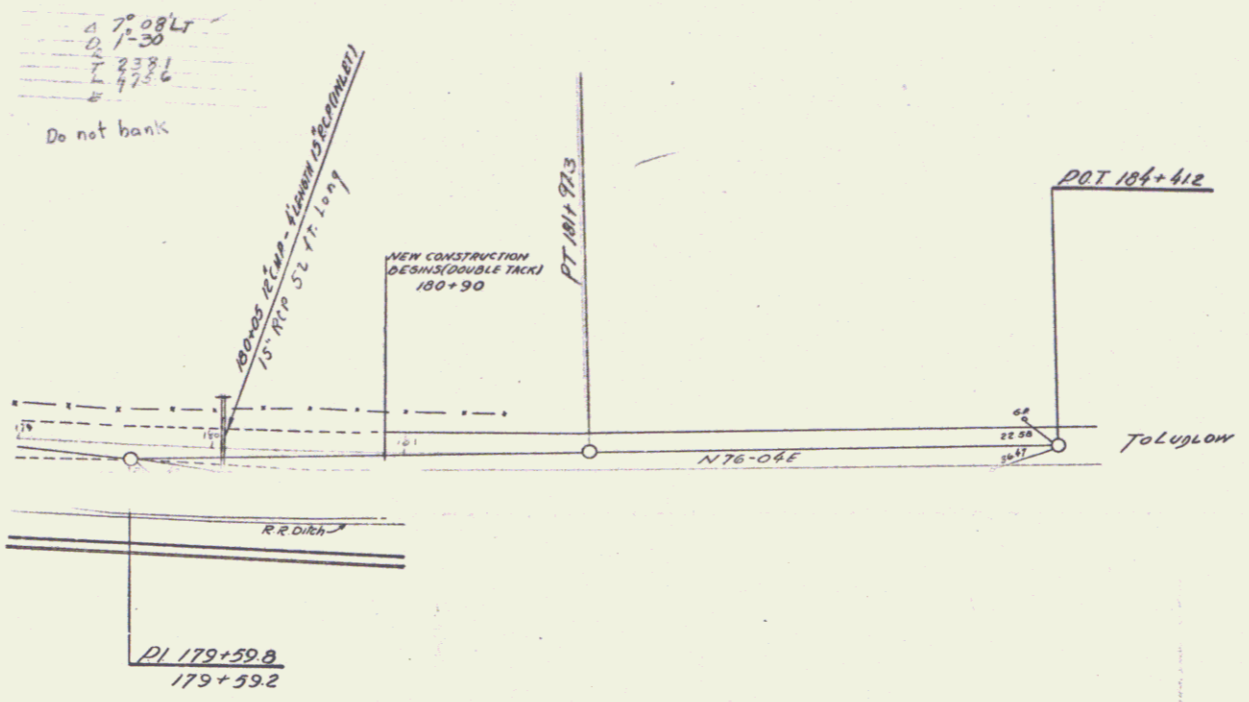
Station	Elevation
163	743.3
164	743.71
165	743.5
166	743.41
167	743.04
168	742.7
169	742.55
170	741.4
171	742.28
172	739.3
173	741.25
174	736.8
175	740.22
176	736.0
177	735.2
178	736.88
179	735.0
180	736.57
181	734.2
182	736.59
183	736.1
184	738.81
185	736.3
186	738.65
187	736.5
188	738.69
189	736.8
190	738.98
191	737.5
192	739.27
193	737.6
194	739.87
195	737.7
196	739.87
197	737.7
198	739.86
199	737.9
200	740.16
201	736.4
202	740.45
203	738.2
204	740.75
205	738.0
206	741.04
207	738.9
208	741.33
209	740.1
210	741.63
211	740.5
212	741.92
213	740.7
214	742.22
215	740.7
216	742.51
217	741.0
218	742.90
219	741.5
220	743.47
221	742.4
222	744.24
223	743.3
224	744.82
225	744.5
226	746.35
227	746.2
228	743.37
229	743.65
230	741.9
231	743.94
232	743.4
233	750.3

163f00-171f00
 18" Subbase of Gravel

171f00-175f00
 Gravel Shaping Course

B.M. #23 SPOT ON BOULDER 54'11" STA 170+53 ELEV 739.75
 B.M. #24 SPOT ON BOULDER 60'21" STA 170+00 ELEV 752.52

SERIES EAP 58.0 (1)
 SHEET 12A

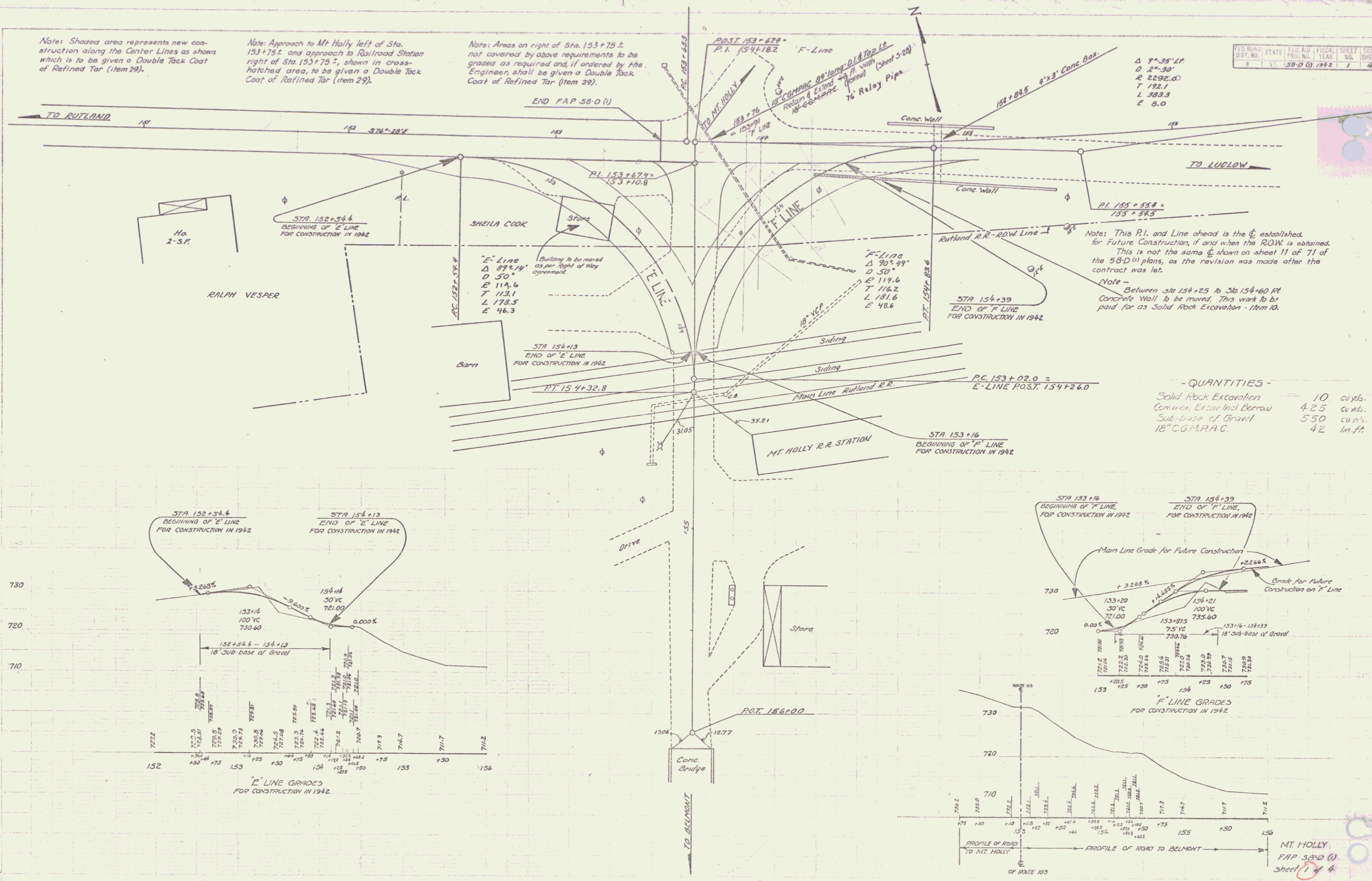


Note: Shaded area represents new construction along the Center Lines as shown which is to be given a Double Tack Coat of Refined Tar (item 29).

Note: Approach to Mt Holly left of Sta. 153+75.2 and approach to Railroad Station right of Sta. 153+75.2, shown in cross-hatched area, to be given a Double Tack Coat of Refined Tar (item 29).

Note: Areas on right of Sta. 153+75.2 not covered by above requirements to be graded as required and, if ordered by the Engineer, shall be given a Double Tack Coat of Refined Tar (item 29).

FED. ROAD DIST. NO.	STATE	FED. AID FISCAL YEAR	SHEET NO.	TOTAL SHEETS
58-0-0	VT	1942	1	4

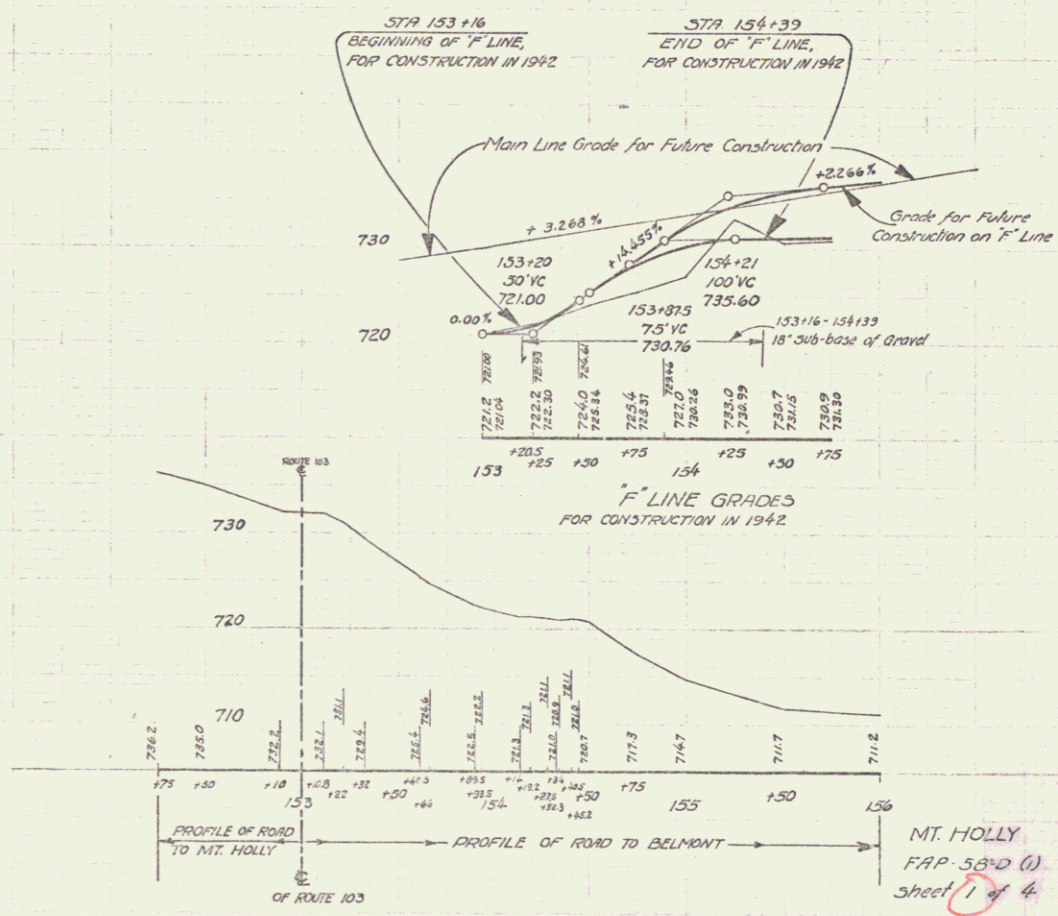
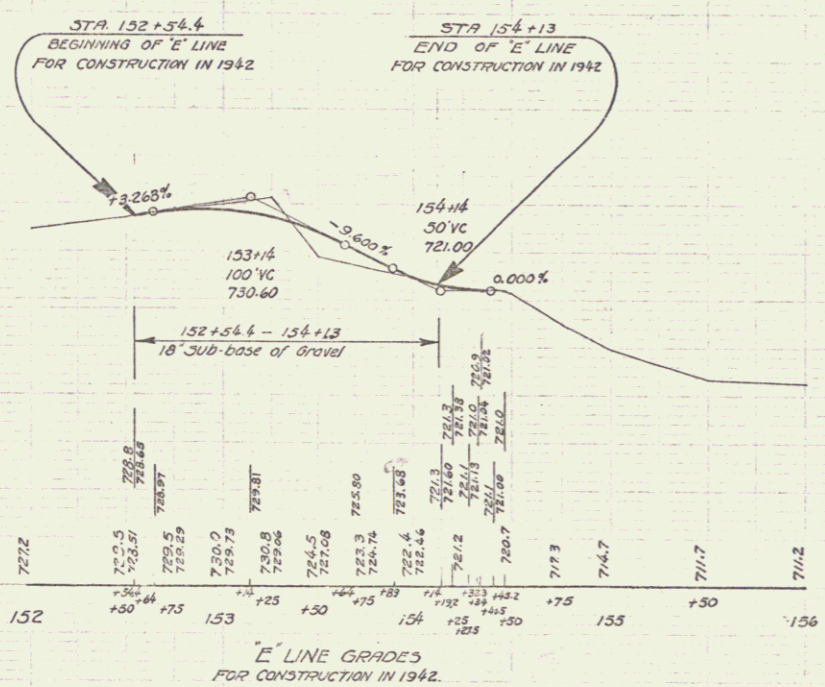


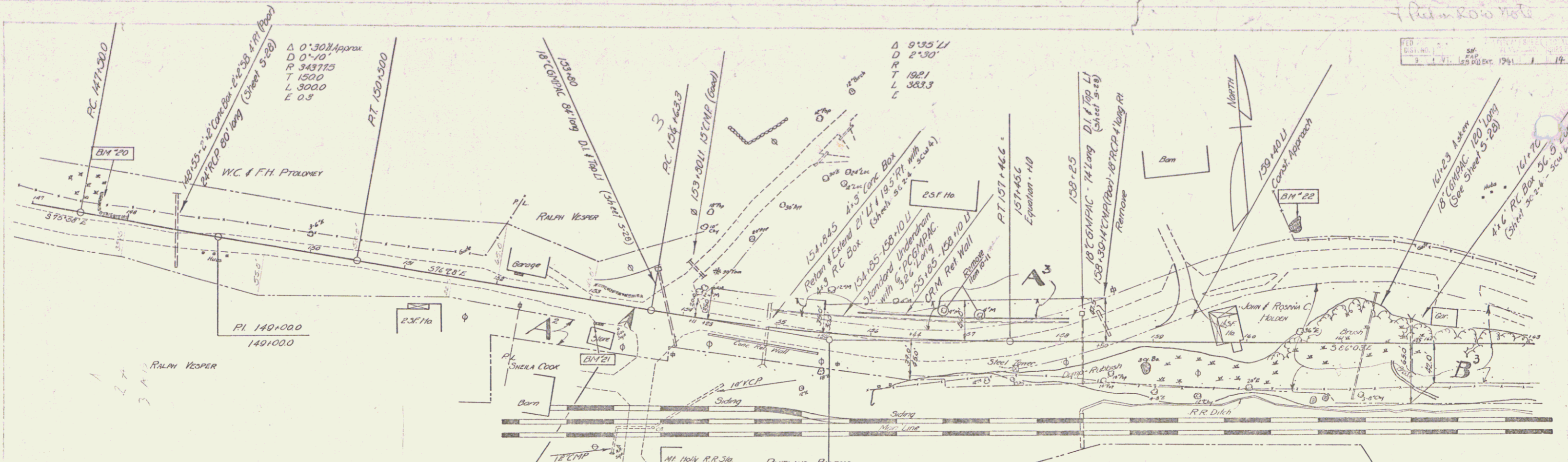
Note: This P.I. and Line ahead is the established for Future Construction, if and when the ROW is obtained. This is not the same as shown on sheet 11 of 71 of the 58-D(1) plans, as the revision was made after the contract was let.

Note - Between sta 154+25 to Sta 154+60 Rt Concrete Wall to be moved. This work to be paid for as Solid Rock Excavation - Item 10.

- QUANTITIES -

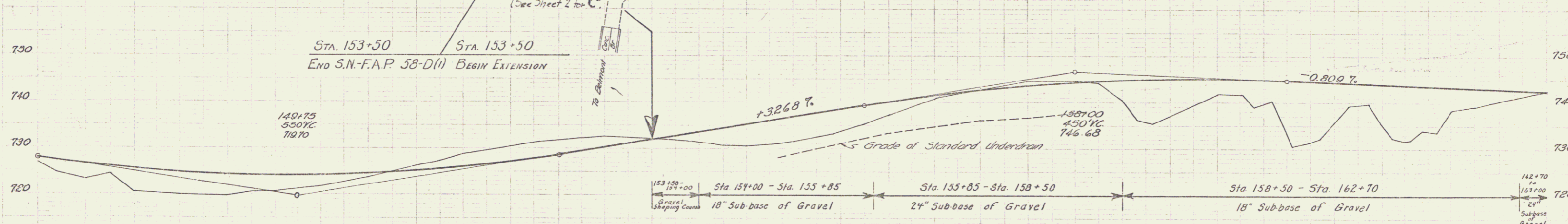
Solid Rock Excavation	10	cuyds.
Common Excav Incl Borrow	42.5	cuyds.
Sub-base of Gravel	550	cuyds.
18" C.G.M.P.A.C.	42	lin.ft.





PARCEL	INSTRUMENT	DATE	GRANTOR	GRANTEE	RECORDED	REMARKS
A, B	V.D.O.E.	3-18-40	RALPH & DORIS VESPER	ST. OF VT.	8007	MT. HOLLY
A'	COND.		RUTLAND RAILROAD	ST. OF VT.	25	8-20-40
A ²	W.D.	4-1-42	SHEILA COOK TEPPER	ST. OF VT.	25	4-3-42 8-30-40
A ² , B ² , C ²	COND.	5-9-41	JOHN BEROSANNA C. HOLDEN	ST. OF VT.	25	2-6-41 4-5-42

See Pmt F-58(2) Part A (1953)
See Sheet 2 for C
RUTLAND COUNTY COURT DOCKET 13935



Station	Elevation	Station	Elevation	Station	Elevation
147+00	727.7	150+00	734.6	153+00	746.7
148+00	725.3	151+00	736.4	154+00	746.8
149+00	724.6	152+00	737.1	155+00	746.8
150+00	724.1	153+00	737.8	156+00	746.8
151+00	723.9	154+00	738.5	157+00	746.8
152+00	723.7	155+00	739.2	158+00	746.8
153+00	723.5	156+00	739.9	159+00	746.8
154+00	723.3	157+00	740.6	160+00	746.8
155+00	723.1	158+00	741.3	161+00	746.8
156+00	722.9	159+00	742.0	162+70	746.8

141 B.M. 20 Spot on Ledge 21 Lt. Sta. 147+71 Elevation 126.00
 B.M. 21 Spot on Gas Flamp Foundation Elevation 132.50
 B.M. 22 Spot on Boulder Elevation 146.71

162+70 to 161+00 24' Subbase Gravel

153+50 to 154+00 18\"/>

Plan in 2010 Note
 1:1 Scale
 14

Red on Red Note

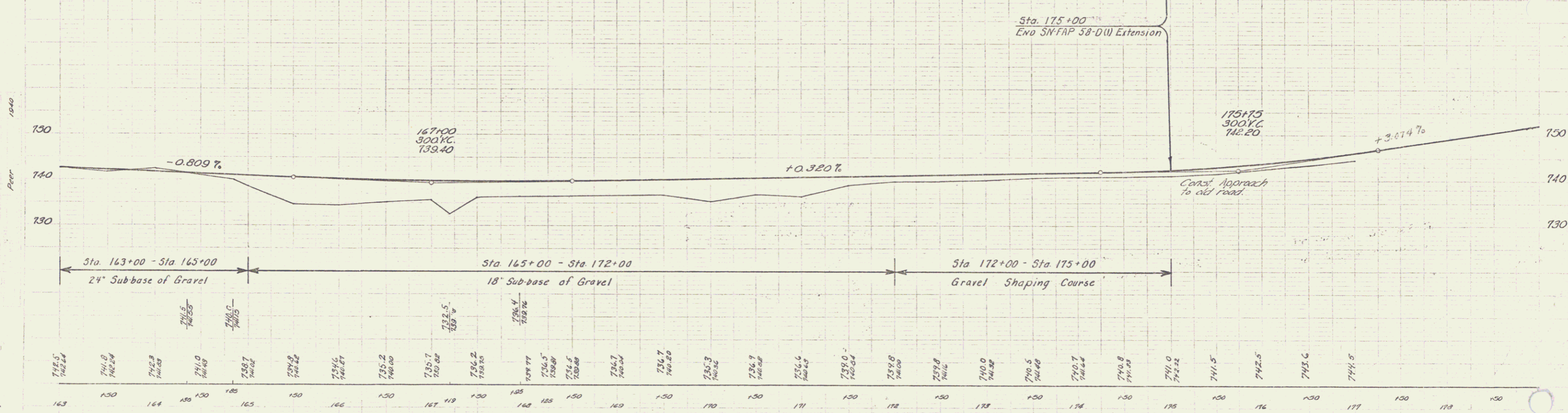
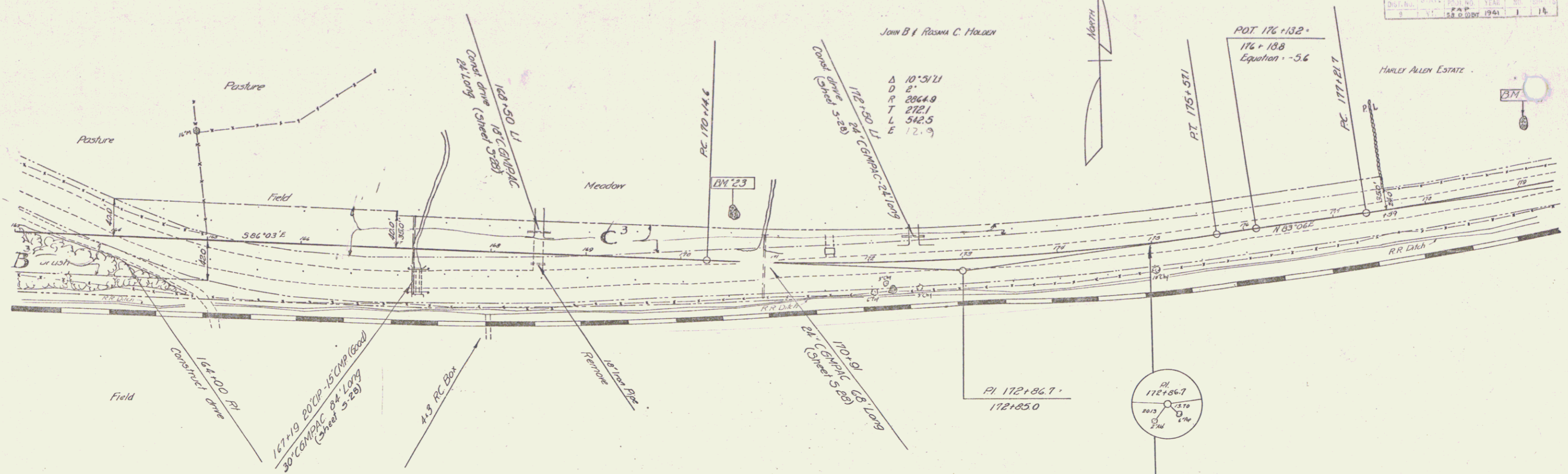
DATE	BY	CHKD	APP'D
1941	J.B.	C.H.	

John B. Rosen C. Holden

Δ 10° 51' 11"
 D 2'
 R 2064.9
 T 272.1
 L 542.5
 E 12.9

POT 176+132
 176+188
 Equation -5.6

HARLEY ALLEN ESTATE



BM 23 Spot on Boulder Elevation 139.75
 BM 24 Spot on Boulder 60' LI Sta 179+00 Elevation 152.52

MT HOLLY
 SN-FAP 58-D(II) Extension
 Sheet 2 of 14 Sheets