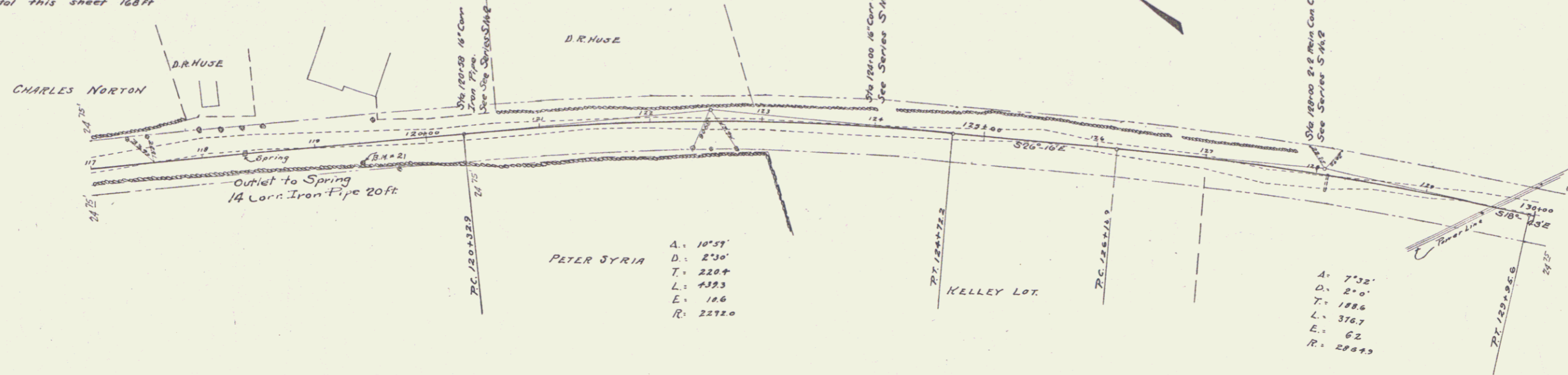


GUARD RAIL REQUIRED
 ON LEFT
 Sta 118+29 to Sta 118+53 Length 24 ft
 " 120+46 " " 120+70 " 24 "
 " 123+88 " " 124+12 " 24 "
 " 127+88 " " 128+12 " 24 "
 ON RIGHT
 Sta 120+46 to Sta 120+70 Length 24 ft
 " 123+88 " " 124+12 " 24 "
 " 127+88 " " 128+12 " 24 "
 Total this sheet 168 ft

NEW CULVERTS REQUIRED
 Sta 120+58 16" Cor Iron Pipe 28 ft
 1-2 1/2 - 5 Con 18 Cuyds
 Sta 124+00 16" Cor Iron Pipe 28 ft
 1-2 1/2 - 5 Con 18 Cuyds
 2-2 Reim Con Cul.
 Sta 128+00 1-2 1/2 - 5 Con 5.5 Cuyds.
 1-2 - 4 " 5.1 " "
 Reim Steel 114"

SUB-BASE REQUIRED
 Sta 117+00 to Sta 118+75 Length 175 ft
 " 123+00 " " 126+00 " 300 "
 " 129+75 " " 130+00 " 25 "

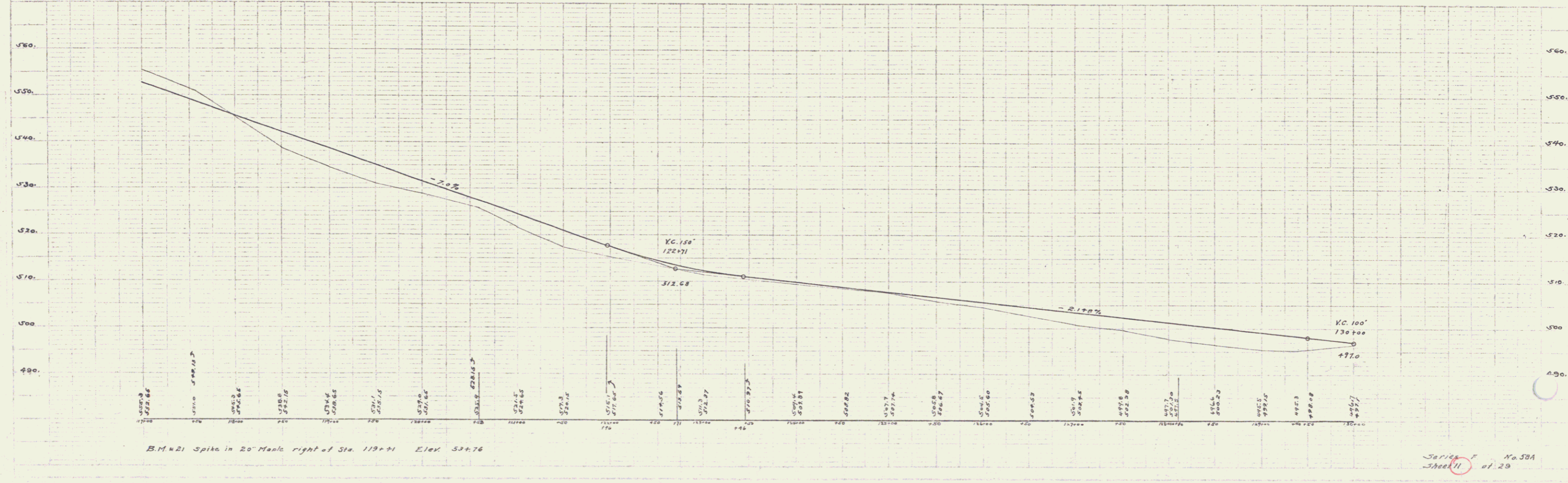
FED. ROAD DIST. NO.	STATE	FED. AID FUNDAL.	SHEET TOTAL
VI	129	2	27



PETER SYRIA
 A: 10°57'
 D: 230'
 T: 220'
 L: 439.3
 E: 16.6
 R: 2272.0

A: 7°32'
 D: 210'
 T: 188.6
 L: 376.7
 E: 6.2
 R: 2894.9

ROW is 3 rods wide



Station of No. 381
 Sheet 11 of 29

10