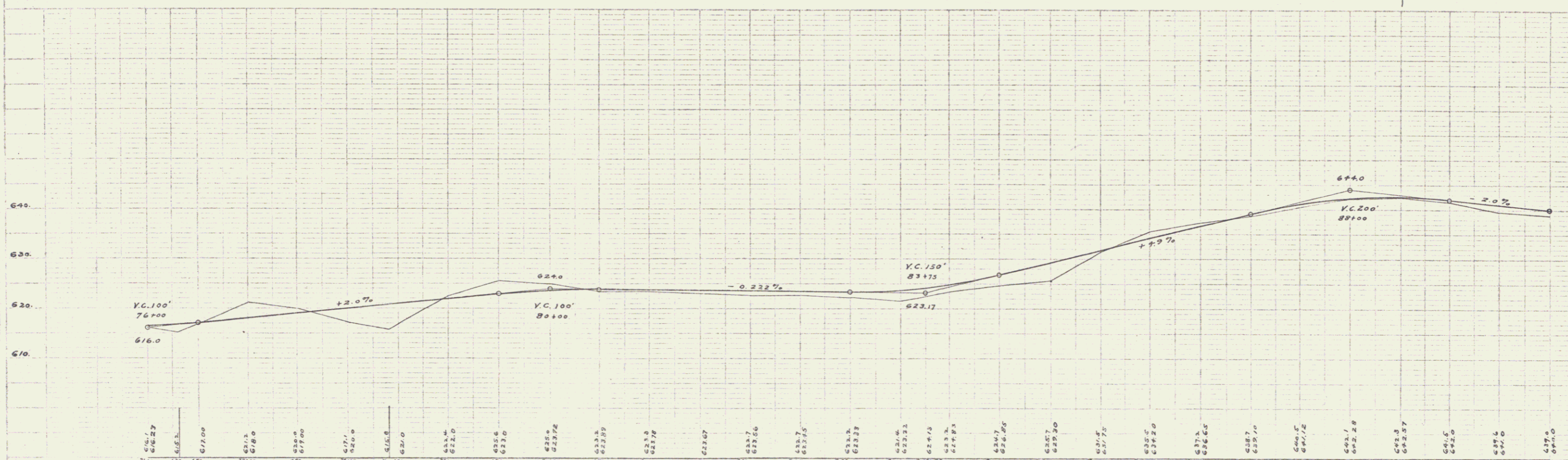
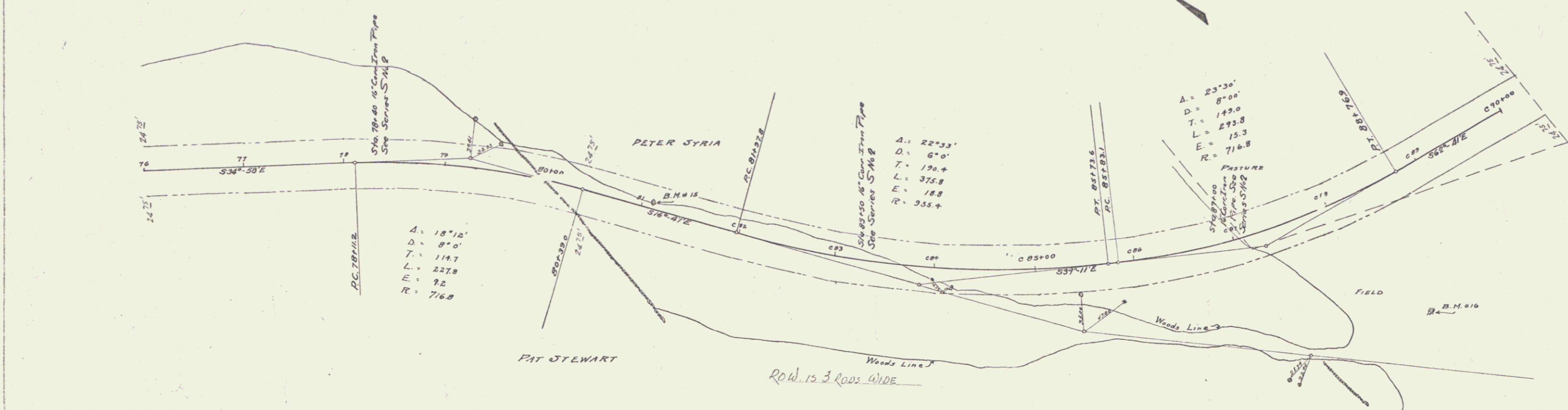


**GUARD RAIL REQUIRED**  
 On Left  
 Sta 78+28 to Sta 78+52 Length 24 ft  
 " 83+38 " " 83+62 " 24 "  
 " 86+88 " " 87+12 " 24 "  
 On Right  
 Sta 77+84 to Sta 79+12 Length 128 ft  
 " 83+38 " " 85+86 " 248 "  
 " 86+88 " " 87+12 " 24 "  
 Total this sheet 472 ft

**NEW CULVERTS REQUIRED**  
 Sta 78+40 16" Corrn Iron Pipe 34 ft  
 1-2 1/2-5 Con 18 Cuyds.  
 Sta 83+50 16" Corrn Iron Pipe 32 ft  
 1-2 1/2-5 Con 18 Cuyds.  
 Sta 87+00 16" Corrn Iron Pipe 32 ft  
 1-2 1/2-5 Con 18 Cuyds.

**SUB-BASE REQUIRED**  
 Sta 76+00 to Sta 77+75 Length 175 ft  
 " 87+00 " " 90+00 " 100 "

| FED. ROAD STATE PER. AND FISCAL SHEET TOTAL |
|---|
| DIST. NO. PROJECT NO. YEAR NO. SHEETS       |
| 7 1324 1923 8 29                            |



B.M. 15 Spike in 10" Maple Left of Sta 81+10 Elev 621.15  
 B.M. 16 Boulder Right of Sta 87+00 Elev 628.96

Series 8 of 29