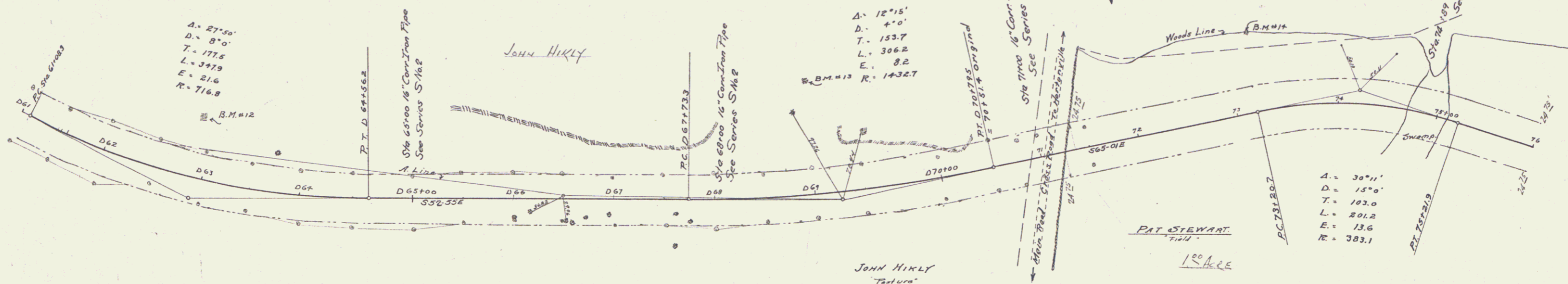


GUARD RAIL REQUIRED
 On Left
 Sta 64+88 to Sta 65+12 Length 24 ft
 " 67+88 " " 68+12 " 24 "
 " 70+88 " " 71+12 " 24 "
 " 74+32 " " 75+48 " 16 "
 On Right
 Sta 61+00 to Sta 61+73 Length 73 ft
 " 63+92 " " 65+28 " 36 "
 " 66+72 " " 68+48 " 176 "
 " 70+32 " " 71+32 " 120 "
 " 74+32 " " 75+48 " 16 "
 Total this sheet 769 ft.

NEW CULVERTS REQUIRED
 Sta 65+00 16" Cor. Iron Pipe 40 ft
 1-2 1/2 Con 18 Cu yds.
 Sta 68+00 16" Cor. Iron Pipe 36 ft
 1-2 1/2 Con 18 Cu yds.
 Sta 71+00 16" Cor. Iron Pipe 32 ft
 1-2 1/2 Con 18 Cu yds.
 Sta 74+89 22" Rein. Con. Cui.
 1-2 1/2 Con 71 Cu yds.
 Rein Steel 153#

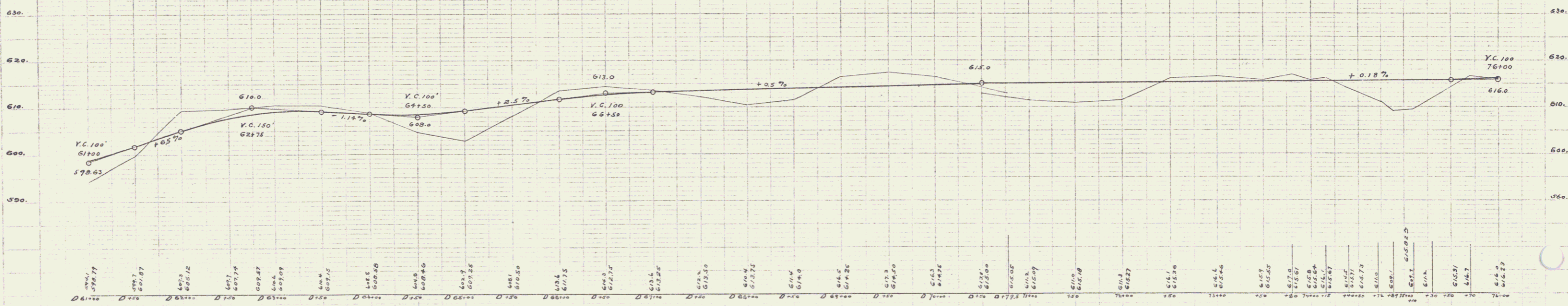
SUB-BASE REQUIRED
 Sta 72+25 to Sta 74+40 Length 215 ft
 " 75+30 " " 76+00 " 30 "

FED. ROAD DIST. NO.	STATE	FED. AID PROJ. NO.	FISCAL YEAR	SHEET NO.	TOTAL SHEETS
3	VT	302	1933	7	29



R.O.W.
 NOTE:

R.O.W. is 3 rods wide, 1 1/2 rods on each side of the above E, except on land of JOHN HIKLY where the privilege is given to cut or fill or extend structures beyond the above mentioned 1/2 R. lines where necessary to get proper grades and make the proper side slopes therefor.



B.M.#12 Boulder Left of Sta. 62+30 Elev. 621.38
 B.M.#13 Spike in 2" Birch Left of Sta. 68+35 Elev. 623.84
 B.M.#14 Spike in 1 1/2" Yellow Birch Left of Sta. 71+12 Elev. 619.79

Series F No. 594
 Sheet 7 of 29