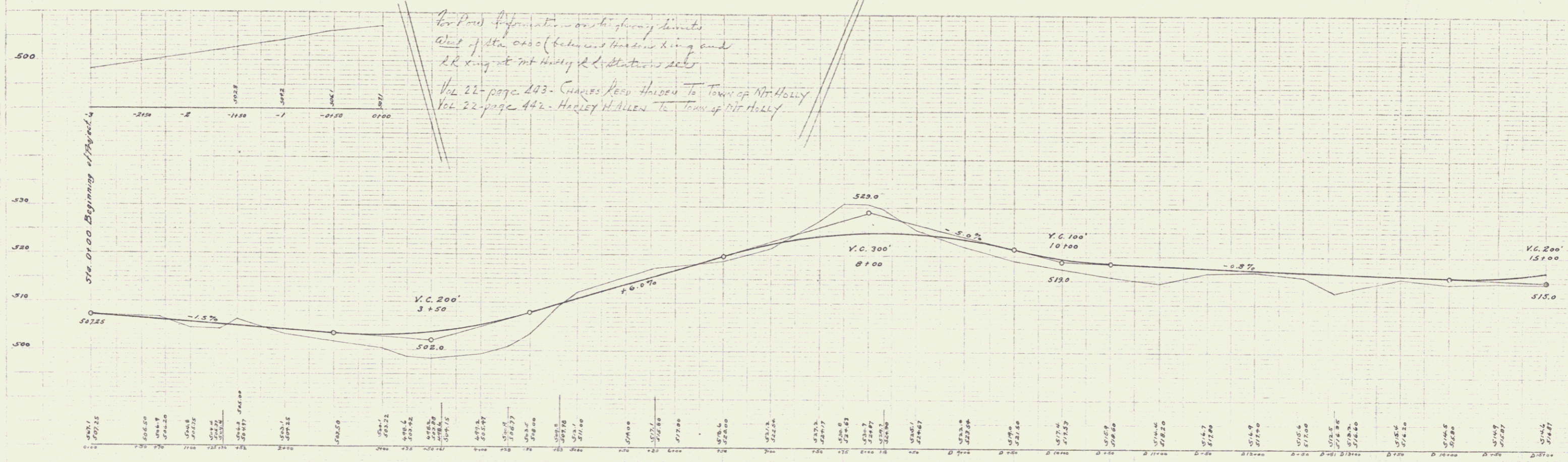
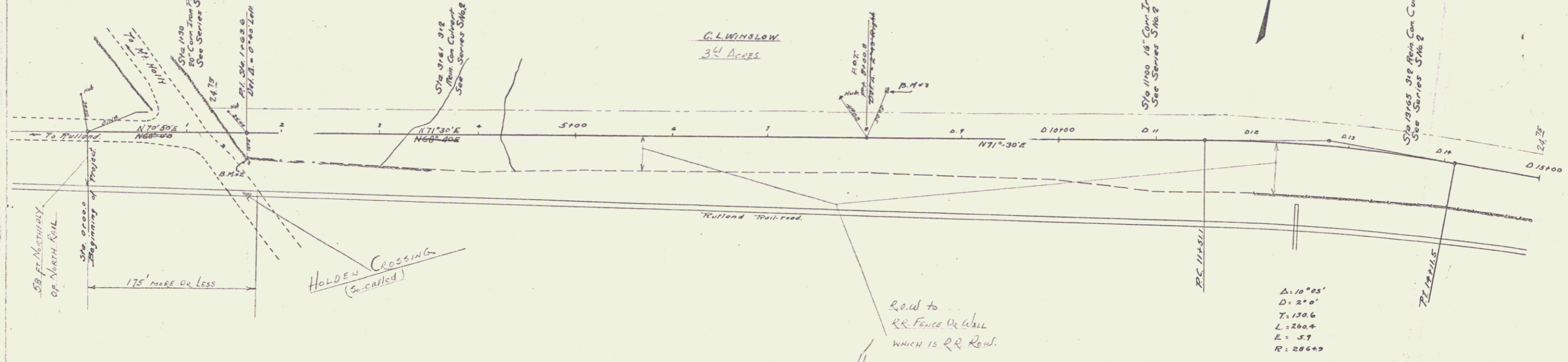


GUARD RAIL REQUIRED
 ON LEFT
 Sta 1+18 to Sta 1+42 Length 24 ft
 " 3+36 " " 4+40 " 104 "
 " 10+88 " " 11+12 " 24 "
 " 13+53 " " 13+77 " 24 "
 ON RIGHT
 Sta 1+18 to Sta 1+42 Length 24 ft
 " 2+76 " " 4+76 " 200 "
 " 9+16 " " 11+40 " 224 "
 " 12+25 " " 13+77 " 152 "
 Total this sheet 776 ft

NEW CULVERTS REQUIRED
 Sta 1+30 20" Con Iron 34 ft
 1-2 1/2-3 Con 23 Cuyds
 Sta 3+61 31 1/2" Rein Con Culvert
 1-2 1/2-3 Con 9 1/2 Cuyds
 1-2 1/4 Con 42 " "
 Rein Steel 216 "
 Sta 11+00 16" Con Iron 28 ft
 1-2 1/2-3 Con 18 Cuyds
 Sta 13+03 31 1/2" Rein Con Culvert
 1-2 1/2-3 Con 9 Cuyds
 1-2 1/4 Con 38 " "

SUB-BASE REQUIRED
 Sta 0+00 to Sta 2+25 Length 225 ft
 " 13+50 " " 17+10 " 360 "

FED. ROAD DIST. NO.	STATE	FED. AID	FISCAL YEAR	SHEET NO.	TOTAL SHEETS
VI. 38 A	VT.	1923	3	24	



E. M. H. Town East of N. Roadmill at Culvert Sta - 3+00 Elev. 500.00
 " 42 Spite in Pine Swamp Sta 1+63 Elev. 503.19
 " 43 Boulder Left of E Sta 8+24 Elev. 534.90

Series R No. 50A
 Sheet 3 of 29