

INDEX OF SHEETS

SHEET NO.	1	TITLE PAGE
2	2	TYPICAL CROSS SECTION OF SUPERSTRADE, REINFORCED CONCRETE PAVEMENT, 17'6" WIDE BY SHEET
3	3	BARPING AND KEYING TABLES
4	4	UTILITY SHEET (1148)
5	5	UTILITY SHEET (1248)
6	6	EARTHWORK SHEET-PART A
7-9	7-9	PLAN AND PROFILE SHEETS-PART A
10-12	10-12	CROSS-SECTIONS-PART A
13	13	EARTHWORK SHEET-PART B
14-16	14-16	PLAN AND PROFILE SHEETS-PART B
17-19	17-19	CROSS-SECTIONS-PART B
20	20	DETAILS OF REINFORCED CONCRETE SUB-PART A
21	21	DETAILS OF WINGS FOR REINFORCED CONCRETE SUB-PART B
22-24	22-24	REINFORCING STEEL SCHEDULE FOR REINFORCED CONCRETE SUB-PART B
25-27	25-27	CROSS-SECTIONS-PART B
28-30	28-30	STANDARD STRUCTURE SHEET (DRAINAGE AND MARKERS)
31	31	STANDARD STRUCTURE SHEET (DITCHES)
32	32	STANDARD STRUCTURE SHEET (TYPICAL LEFT SIDEWALK)
33	33	STANDARD STRUCTURE SHEET (TYPICAL RIGHT SIDEWALK)
34	34	STANDARD STRUCTURE SHEET (TYPICAL SIDEWALK)
35	35	STANDARD STRUCTURE SHEET (TYPICAL SIDEWALK)
36	36	STANDARD STRUCTURE SHEET (TYPICAL SIDEWALK)
37	37	STANDARD STRUCTURE SHEET (TYPICAL SIDEWALK)
38	38	STANDARD STRUCTURE SHEET (TYPICAL SIDEWALK)
39	39	STANDARD STRUCTURE SHEET (TYPICAL SIDEWALK)
40	40	STANDARD STRUCTURE SHEET (TYPICAL SIDEWALK)

STANDARD STRUCTURE SHEETS APPROVED BY THE CHIEF ENGINEER, VERMONT STATE DEPARTMENT OF HIGHWAYS
2-10-1936

STATE OF VERMONT
DEPARTMENT OF HIGHWAYS
PROPOSED IMPROVEMENT
FEDERAL PROJECT
TOWN OF MOUNT HOLLY
COUNTY OF RUTLAND
VERMONT ROUTE 103
LUDLOW-RUTLAND ROAD

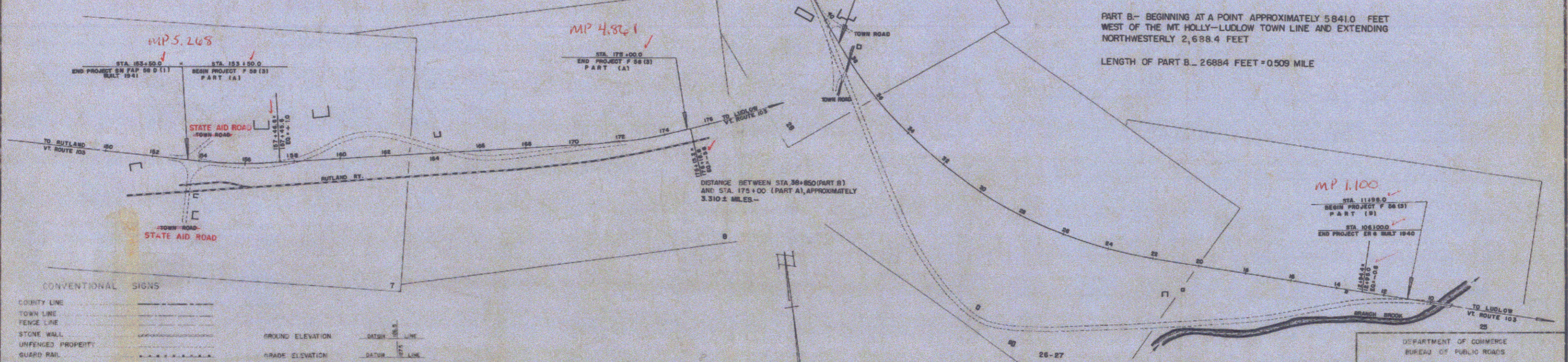


PROJECT NAME & NUMBER		TYPE	PAVEMENT AREA
MT. HOLLY F 58 (3)		BIT. CONC. PAVE.	13,660 SQ.
RECORD PLANS			
MATERIALS			
SUB-BASE OF GRAVEL	HOLDEN PIT, MT. HOLLY	REIN. STEEL	VT. STRUC. STEEL CO., BURLINGTON
SUB-BASE OF SAND	HOLDEN PIT, MT. HOLLY	R.O.P.	FEDERAL PIPE CO., GLENS FALLS, N.Y.
CR. GRAVEL	HOLDEN PIT, MT. HOLLY	ACQGM.P.	BERGER MET. CO., WESTMINSTER, N.J.
TOWN PIT, LUDLOW & VT. MARBLE CO., FLORENCE		CABLE FOR G.R.	AM. ST. & WIRE CO., NEW HAVEN, CONN.
OUTBACK ASPHALT	SOC. VACUUM, E. PROV., R.I.	G.R. PAINT	BRADLEY LABS., BRATTLEBORO
CEM. CONC. AGGREGATES	BARKER PLY., RUTLAND		FRANKLIN PAINT CO., FRANKLIN, MASS.
CEMENT	VT. SA. & GR. CO., BELLINGS		REIN. CONC. BATER & WINDGOLA PLANT, SPRINGFIELD
CONTRACTOR	EARL & MERRY, INC., RUTLAND	CONTRACT DATED	SEPTEMBER 9, 1953
RESIDENT ENGR.	C. B. FOSTER	CONTRACT STARTED	SEPTEMBER 21, 1953
INSPECTORS		CONTRACT COMPLETED	SEPTEMBER 30, 1954
RECORD PLANS	C. B. FOSTER 2-15-53	CONTRACT ACCEPTED	SEPTEMBER 30, 1954

LENGTH OF PART A - 2151.0 FEET = 0.407 MILE
LENGTH OF PART B - 2688.4 FEET = 0.509 MILE
TOTAL LENGTH OF PROJECT - 4839.4 FEET = 0.916 MILES

PART A - BEGINNING AT A POINT APPROXIMATELY 28,154.8 FEET WEST OF THE MT. HOLLY-LUDLOW TOWN LINE AND EXTENDING EASTERLY 2151.0 FEET
LENGTH OF PART A - 2151.0 FEET = 0.407 MILES

PART B - BEGINNING AT A POINT APPROXIMATELY 5841.0 FEET WEST OF THE MT. HOLLY-LUDLOW TOWN LINE AND EXTENDING NORTHWESTERLY 2,688.4 FEET
LENGTH OF PART B - 2688.4 FEET = 0.509 MILE



CONVENTIONAL SIGNS

COUNTY LINE	ROAD ELEVATION	DASH LINE
TOWN LINE	GRADE ELEVATION	SOLID LINE
FENCE LINE		
STONE WALL		
UNFENCED PROPERTY		
GUARD RAIL		
TRAVELED WAY		
RAILROAD		
CONCRETE WALL		
SURVEY LINE		
CONCRETE		
TROUBLE POLE		
POWER POLE		
TELEPHONE POLE		
TREES		
WEDGE		

CURVE DATA

DEFLECTION OF ANGLE	D
DEGREE OF CURVE	D
RADIUS OF CURVE	R
TANGENT DISTANCE	T
LENGTH OF CURVE	L
EXTERNAL DISTANCE	E
POINT OF INTERSECTION	PI
POINT OF CURVE	P.C.
POINT OF TANGENT	P.T.
POINT ON TANGENT	POT
POINT ON SUB-TANGENT	POST

SCALES

TITLE	1" = 200'
TYPICAL	1" = 2'
PLAN	1" = 50'
PROFILE HORIZONTAL	1" = 80'
PROFILE VERTICAL	1" = 10'
CROSS-SECTIONS	1" = 8'

MOUNT HOLLY F 58 (3)
JOINT: EARL & MERRY, INC.
RECORD PLANS - C. B. FOSTER
CONSTR. COMPLETED 9-30-54

APPROVED	APPROVED	APPROVED	APPROVED	APPROVED
DATE	DATE	DATE	DATE	DATE
JULY 3, 1953		JULY 7, 1953	JULY 3, 1953	JULY 3, 1953

THESE PLANS ARE SUBJECT TO SUCH REVISIONS AS MAY BE REQUIRED BY THE BUREAU OF PUBLIC ROADS OR THE COMMISSIONER OF HIGHWAYS.
CONSTRUCTION IS TO BE CARRIED ON IN ACCORDANCE WITH THE PLANS AND THE STANDARD ROAD AND BRIDGE SPECIFICATIONS OF 1948 AS APPROVED JULY 22, 1949 BY THE BUREAU OF PUBLIC ROADS, INCLUDING ALL SUBSEQUENT APPROVED REVISIONS AND SUCH REVISED SPECIFICATIONS AND SPECIAL PROVISIONS AS ARE SUBMITTED WITH THE PLANS.

DEPARTMENT OF COMMERCE
BUREAU OF PUBLIC ROADS

APPROVED

DISTRICT ENGINEER DATE

Pin # 00R111

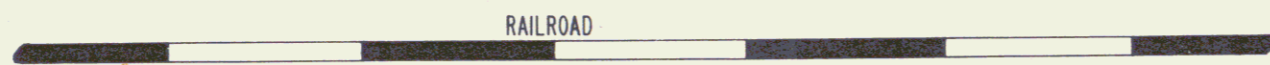
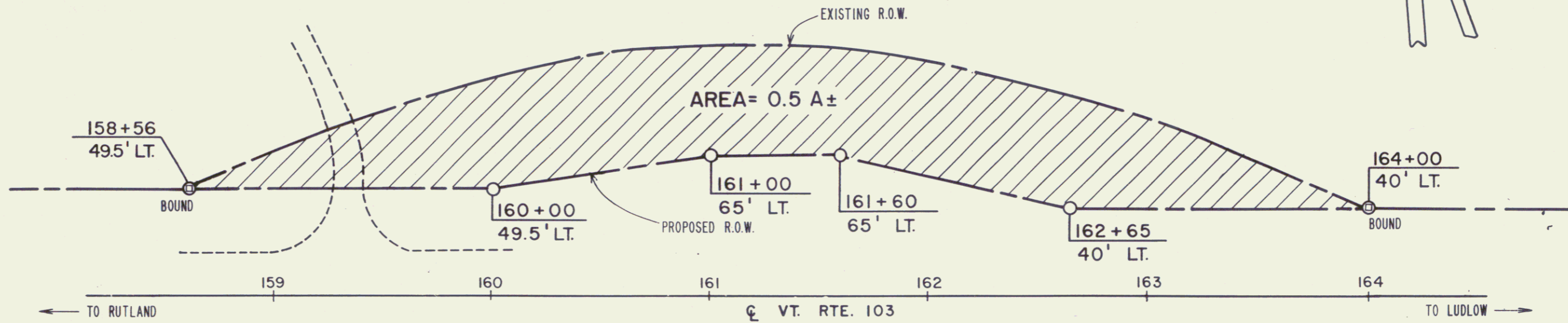
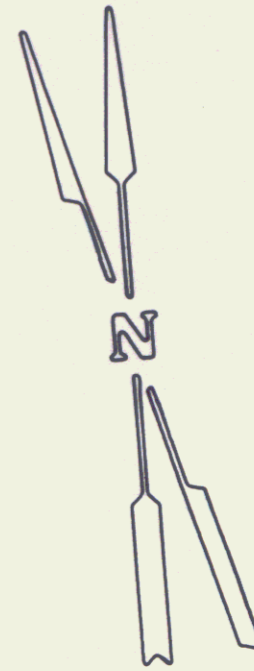
PROJECT F 58 (3)

SHEET 1 OF SHEETS 49

ACQUIRED BY ORDER OF THE STATE HIGHWAY BOARD PURSUANT
 TO LEGISLATIVE ACT 61, 1931 AND ALSO BY FINAL ORDER OF THE
 RUTLAND COUNTY COURT DOCKET NO. 13950, DATED MAY 9, 1941,
 IN VOL. 70, PG. 476 OF THE RUTLAND COUNTY COURT RECORDS.

MP 0527

STATE OF VERMONT TO LUCILE H. MARTIN
 BY QCD ON 10/20/81 IN BK 35/499-500



SCALE: 1" = 50'



REF. SHEETS 7, 8 OF 49 *VT 103*
 STATE OF VERMONT
 AGENCY OF TRANSPORTATION

SHEET *7A*

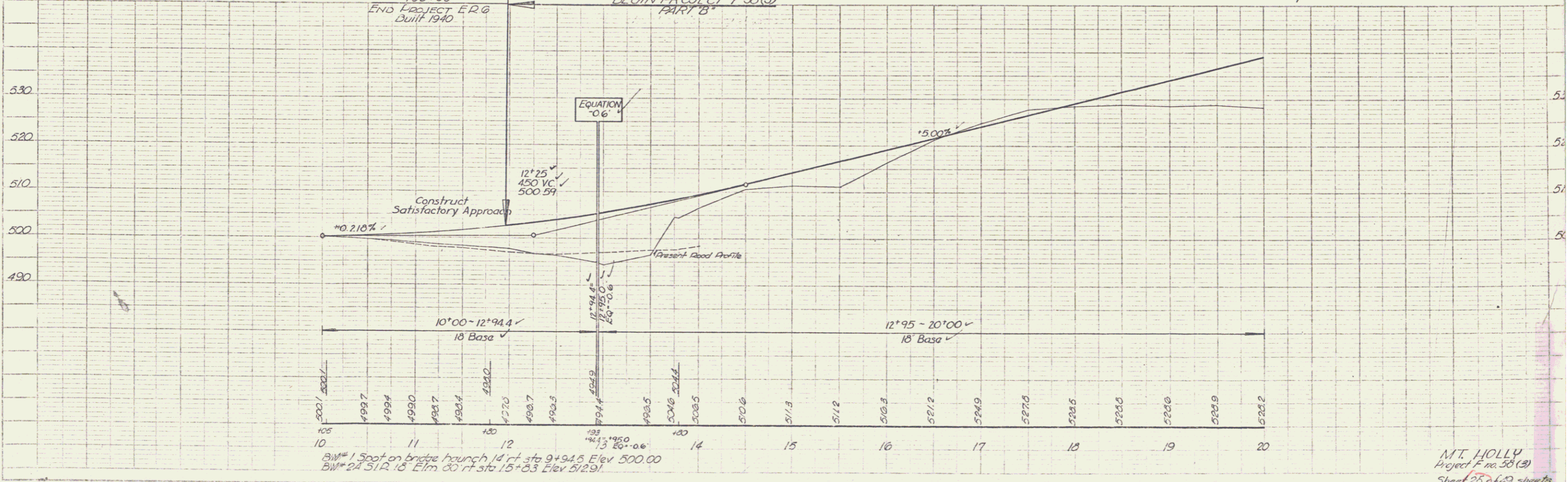
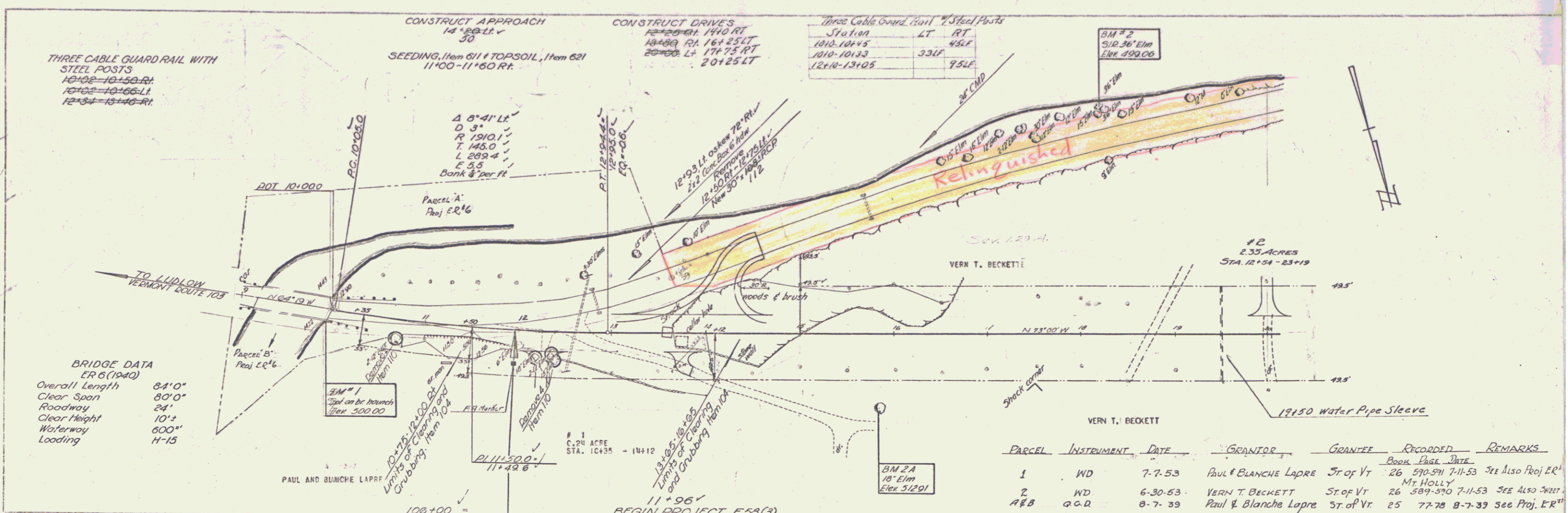
MT. HOLLY

F 58 (3)

3

DATE 9/16/81 DRAWN BY B.A.M.

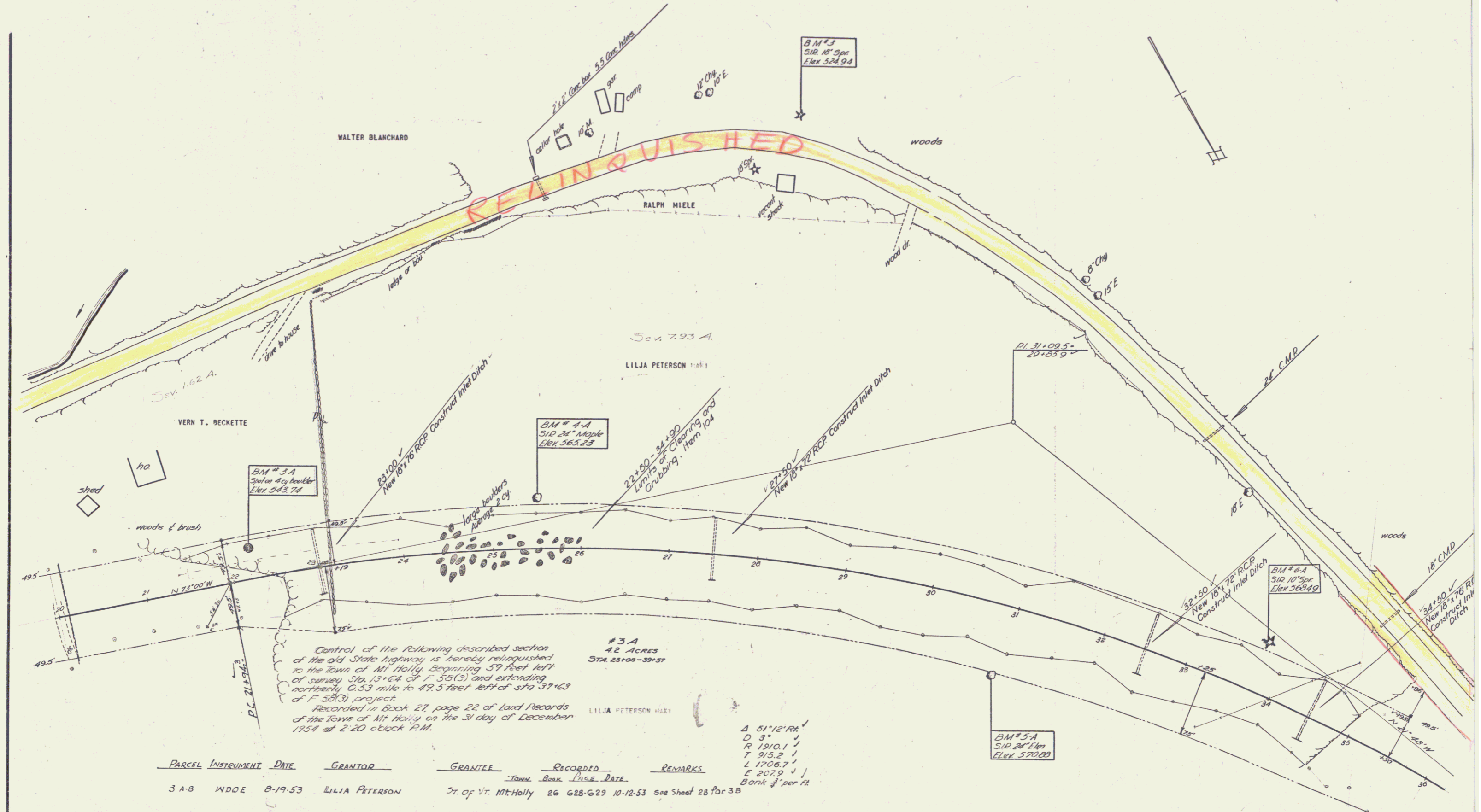
MT. HOLLY
VT 103



Right of Way Bid Items Govt Part
Sta 20+10±
Install Sleeves for Water Pipes, Item 131
each Excavation of Earth Item 103

THREE CABLE GUARD RAIL WITH
STEEL POSTS
21+40-23+25 LT
+7% LT

Wood Guide Post Station	LT	RT
27+20 - 27+24	7	
34+20 - 34+24	12	
31+22 - 31+24	10	
Side Road Sta. 54+00	8	



Control of the following described section of the old State highway is hereby relinquished to the Town of Mt Holly, beginning 57 feet left of survey Sta. 13+64 of F 35(S) and extending northerly 0.53 mile to 47.5 feet left of sta 37+63 of F 38(S) project.
Recorded in Book 27, page 22 of Land Records of the Town of Mt Holly on the 31 day of December 1954 at 2:20 o'clock P.M.

#3A
42 ACRES
STA 25108-39+57

PARCEL	INSTRUMENT	DATE	GRANTOR	GRANTEE	RECORDED	REMARKS		
				Town	Book	Page	DATE	
3 A-B	WDOE	8-19-53	LILJA PETERSON	Town of Mt Holly	26	628-629	10-12-53	see Sheet 28 for 3B Bank \$1.00 per ft

Δ 51°12' RR
D 3'
R 1910.1'
T 915.2'
L 1706.7'
E 207.9'
Bank \$1.00 per ft

MT HOLLY
Project F 38(S)
Sheet 28 of 120 Sheets

Three Cable Guard Rail, Wood Posts	LT	RT
Station	125LE	98LT
37+25-38+50		
37+50-38+48		

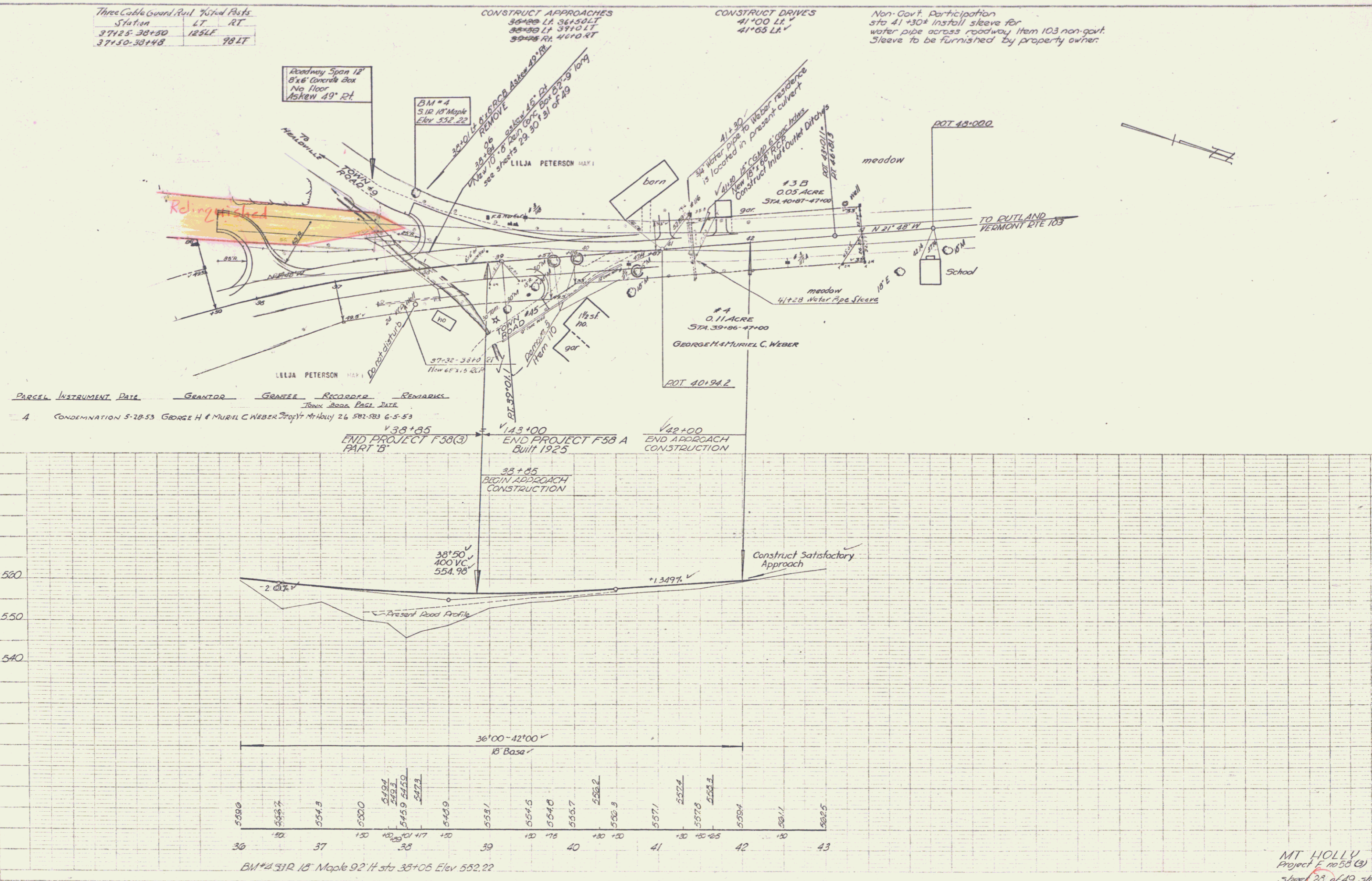
CONSTRUCT APPROACHES
 36+00 LA 36+50 LT
 38+00 LA 37+0 LT
 39+00 RA 40+0 RT

CONSTRUCT DRIVES
 41+00 LA
 41+65 LA

Non-Govt. Participation
 sta 41+30+ install sleeve for
 water pipe across roadway Item 103 non-govt.
 Sleeve to be furnished by property owner.

DATE	1/23
BY	ALA
PROJECT	MT HOLLY
NO.	28 of 49

DATE	1/23
BY	ALA
PROJECT	MT HOLLY
NO.	28 of 49



MT HOLLY
 Project F 58(3)
 Sheet 28 of 49 sheets