

TOWNS OF
BLOOMFIELD-BRUNSWICK

Project ST 161-M

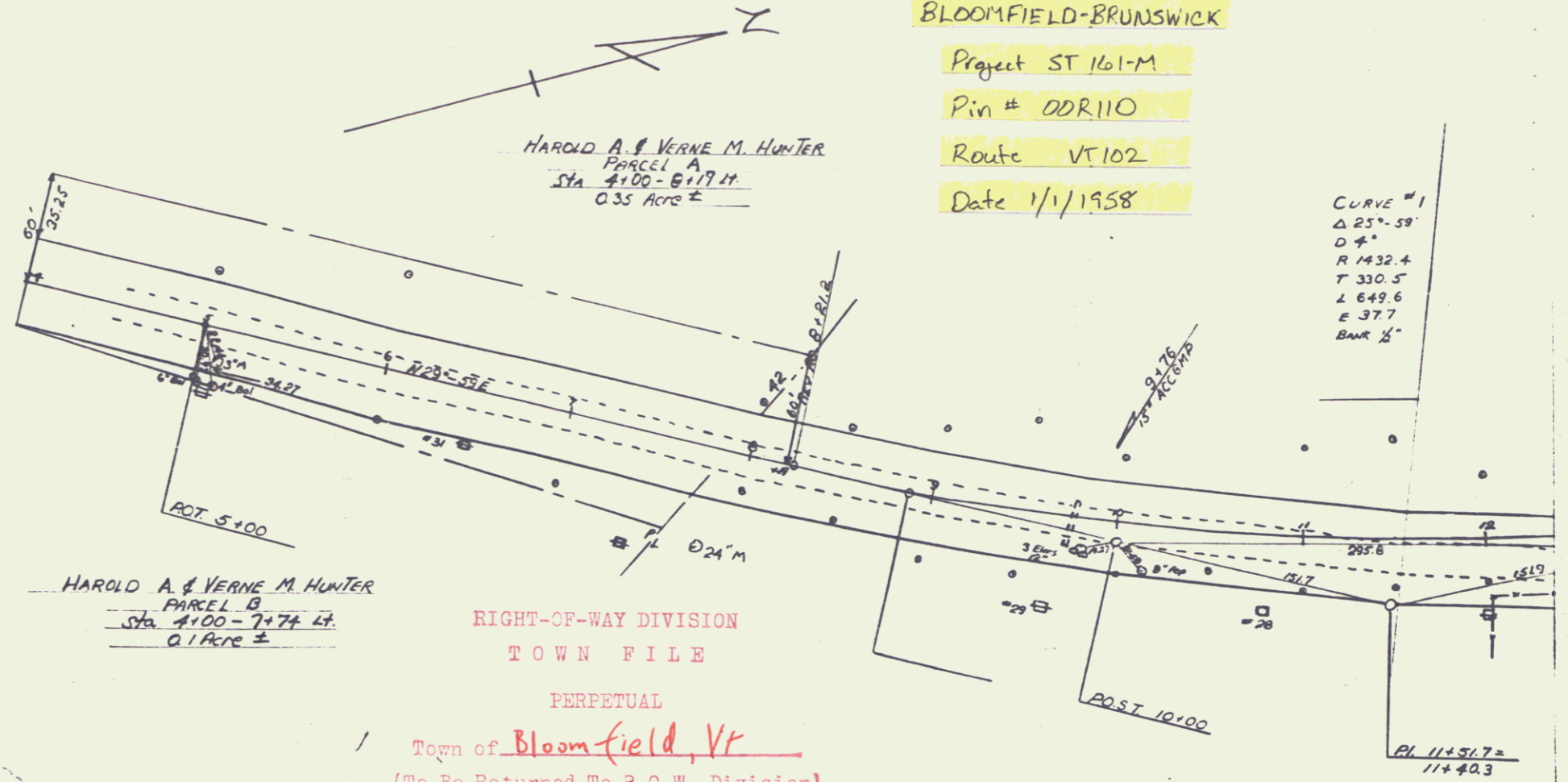
Pin # 00R110

Route VT 102

Date 1/1/1958

HAROLD A. & VERNE M. HUNTER
PARCEL A
STA 4+00 - 6+17.17
0.35 ACRES ±

CURVE #1
Δ 25°-59'
D 4'
R 1432.4
T 330.5
L 649.6
E 37.7
BANK 18"



HAROLD A. & VERNE M. HUNTER
PARCEL B
STA 4+00 - 7+77.47
0.1 ACRES ±

RIGHT-OF-WAY DIVISION
TOWN FILE

PERPETUAL

Town of Bloomfield, VT
(To Be Returned To R.O.W. Division)

BLOOMFIELD-BRUNSWICK
ST. 161-M

SHEET 1

VT 102 MP 0.00 to 0.16