

INDEX OF SHEETS

SHEET NO.	TITLE PAGE
1	TYPICAL CROSS-SECTION OF IMPROVEMENT (SUB-BASE OF GRAVEL)
2	BANKING AND WIDENING TABLES
3	QUANTITY SHEET (ITEMS)
4	EARTHWORK SHEET (ROADWAY & BRIDGE)
5	PRELIMINARY INFORMATION SHEET (FOR BRIDGES)
6	PLAN AND PROFILE SHEETS
7	DETAILS OF ABUTMENTS 1 & 2
8	DETAILS OF REINFORCING STEEL
9	STANDARD DRAWING C1-245(1) (SUPERSTRUCTURE DETAIL (MOD. FOR 17" 14" SKEW))
10	STANDARD DRAWING SB 20 (DETAILS A, B, C, D, E, F, G, H, I, J, K, L, M, N, O, P, Q, R, S, T, U, V, W, X, Y, Z)
11	STANDARD DRAWING SB 11 (BARRICADES, SIGNS AND LIGHTS)
12	STANDARD STRUCTURE SHEET S 45-45 (TWO CABLE GUARD RAIL)
13	CONSTRUCTION DETAILS CD (DRAINAGE AND MARKERS)
14	CONSTRUCTION DETAILS CD-1 (DITCHES)
15-20	CROSS SECTIONS (ROADWAY)
21-24	CHANNEL SECTIONS

STANDARD STRUCTURE SHEET APPROVED BY THE CHIEF ENGINEER,  
VERMONT STATE DEPARTMENT OF HIGHWAYS.  
S-40 JUNE 10, 1950

# STATE OF VERMONT DEPARTMENT OF HIGHWAYS

## PROPOSED IMPROVEMENT

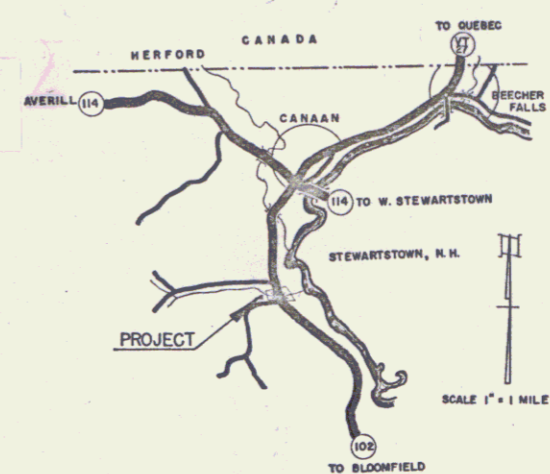
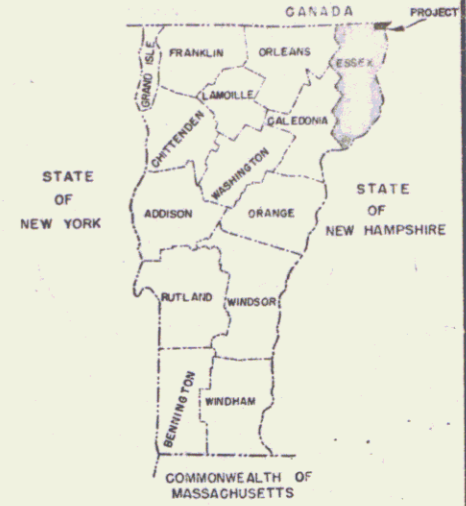
FEDERAL AID SECONDARY PROJECT

### TOWN OF CANAAN COUNTY OF ESSEX VERMONT ROUTE 102 LEMINGTON-CANAAN ROAD

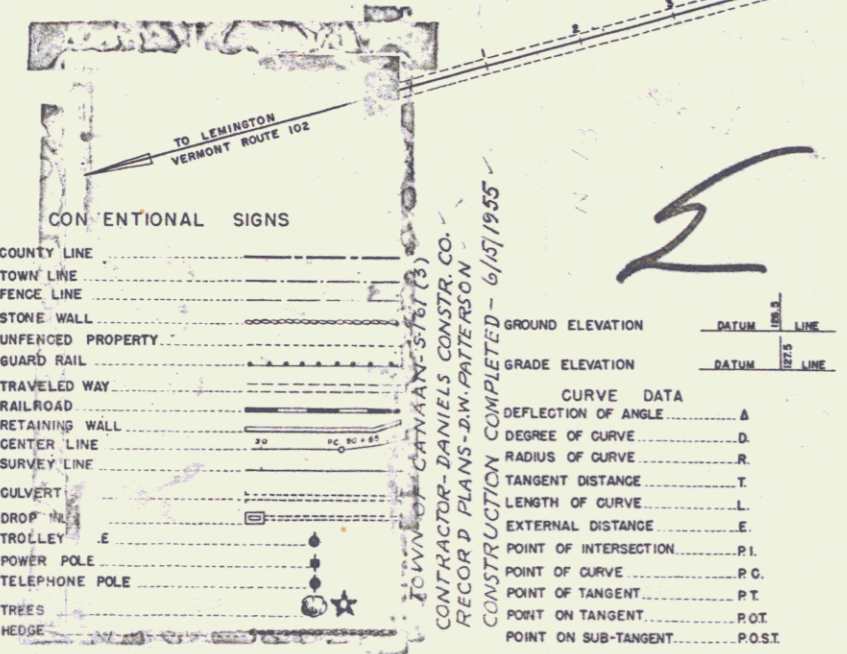
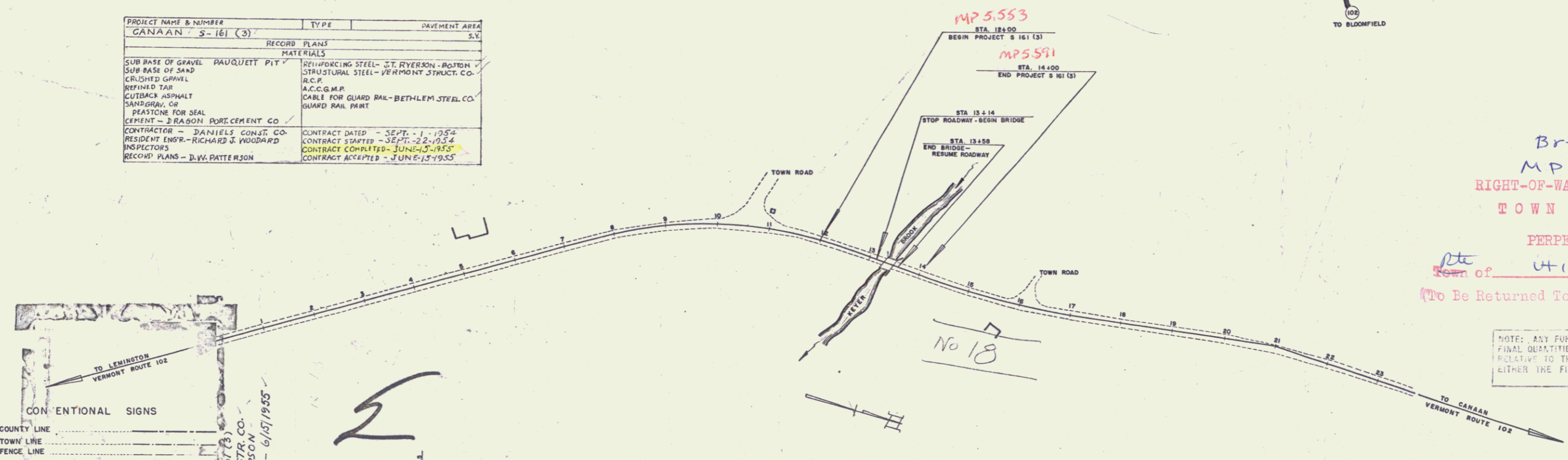
BEGINNING AT A POINT APPROXIMATELY 1.3 MILES  
SOUTH OF THE INTERSECTION OF VERMONT ROUTES  
114 AND 102, AND EXTENDING NORTHERLY 200.0 FT.

LENGTH OF PROJECT 200.0 FT. = 0.038 MI.  
LENGTH OF BRIDGE 44.0 FT. = 0.008 MI.  
LENGTH OF ROADWAY 156.0 FT. = 0.030 MI.

FED. ROAD DISTRICT NO.	STATE	PROJECT NO.	SHEET NO.	TOTAL SHEETS
1	VT	161(3)	1	1



PROJECT NAME & NUMBER	TYPE	PAVEMENT AREA
CANAAN S-161(3)		S.V.
RECORD PLANS		
MATERIALS		
SUB BASE OF GRAVEL PAUQUETT PLY	REINFORCING STEEL - J.T. RYERSON - ROYTON	
SUB BASE OF SAND	STRUCTURAL STEEL - VERMONT STRUCT. CO.	
CRUSHED GRAVEL	R.C.P.	
REFINED TAR	A.C.C.G.M.P.	
QUICK-SET ASPHALT	CABLE FOR GUARD RAIL - BETHLEHEM STEEL CO.	
SANDGRAB, OF	GUARD RAIL PART	
PEASTONE FOR SEAL		
CEMENT - J. HANSON PORTLAND CEMENT CO.		
CONTRACTOR - DANIELS CONSTR. CO.	CONTRACT DATED - SEPT. 1, 1954	
RESIDENT ENGR. - RICHARD J. WOODARD	CONTRACT STARTED - SEPT. 22, 1954	
INSPECTORS	CONTRACT COMPLETED - JUNE 13, 1955	
RECORD PLANS - D.W. PATTERSON	CONTRACT ACCEPTED - JUNE 13, 1955	



SCALES

TITLE	1" = 100'
TYPICAL	1" = 20'
PLAN	1" = 40'
PROFILE HORIZONTAL	1" = 100'
PROFILE VERTICAL	1" = 10'
CROSS-SECTIONS	1" = 10'

Br #18  
M.P. 5.58  
RIGHT-OF-WAY DIVISION  
TOWN FILE 1  
PERPETUAL  
Town of Canaan  
(To Be Returned To R.O.W. Division)

NOTE: ANY FURTHER INFORMATION CONCERNING  
FINAL QUANTITIES, AMOUNTS OR OTHER DETAILS  
RELATIVE TO THIS PROJECT MAY BE FOUND IN  
EITHER THE FIELD BOOKS OR THE ESTIMATE  
FILE.

Pin # 00R107

THESE PLANS ARE SUBJECT TO SUCH REVISIONS AS MAY BE  
REQUIRED BY THE BUREAU OF PUBLIC ROADS OR THE COMMISSIONER  
OF HIGHWAYS.  
CONSTRUCTION IS TO BE CARRIED ON IN ACCORDANCE WITH  
THE PLANS AND THE STANDARD ROAD AND BRIDGE SPECIFICATIONS  
OF 1948, AS APPROVED JULY 25, 1949 BY THE BUREAU OF  
PUBLIC ROADS, INCLUDING ALL SUBSEQUENT APPROVED REVISIONS  
AND SUCH REVISED SPECIFICATIONS AND SPECIAL PROVISIONS AS  
ARE SUBMITTED WITH THE PLANS.

APPROVED DATE July 26, 1954 SECONDARY ENGINEER	APPROVED DATE July 16, 1954 CONSTRUCTION ENGINEER	APPROVED DATE July 16, 1954 BRIDGE ENGINEER	APPROVED DATE July 24, 1954 DISTRICT ENGINEER	APPROVED DATE July 26, 1954 HIGHWAY ENGINEER	APPROVED DATE July 26, 1954 CHIEF ENGINEER
--	---	---	---	--	--

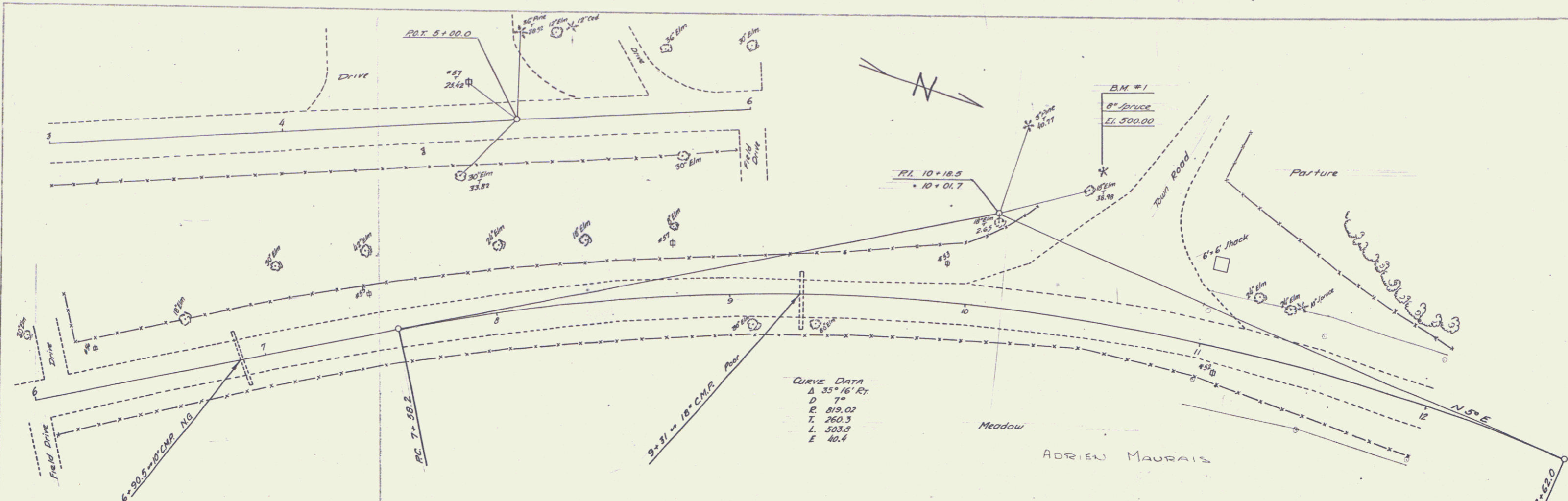
DEPARTMENT OF COMMERCE  
BUREAU OF PUBLIC ROADS

APPROVED \_\_\_\_\_ ENGINEER DATE \_\_\_\_\_

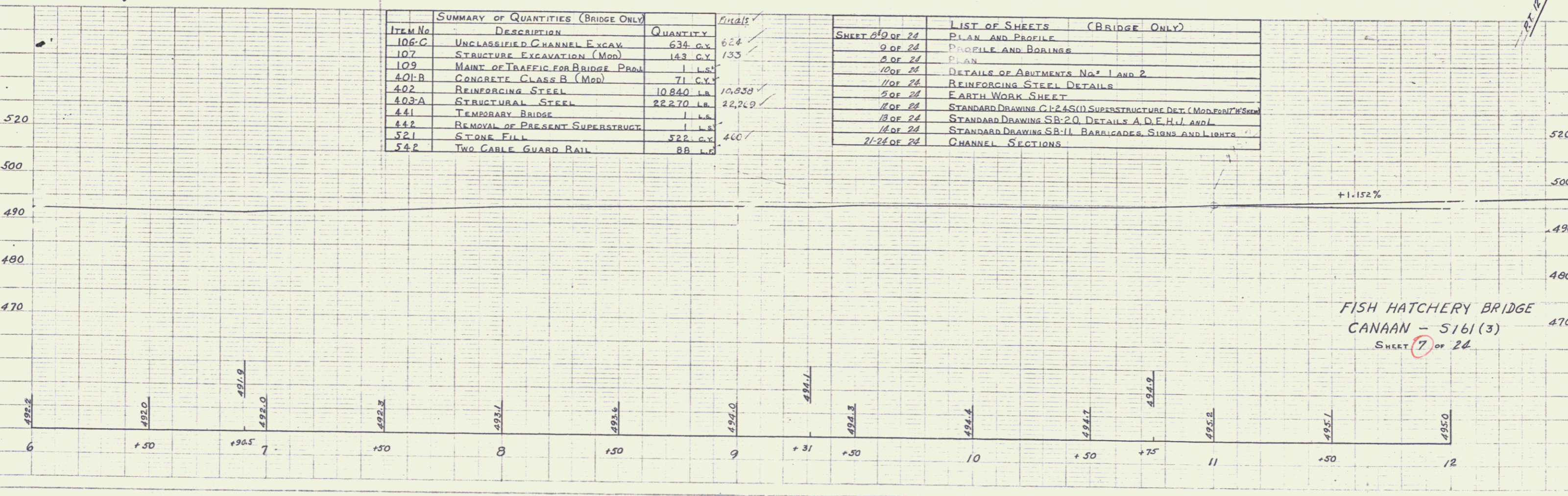
PROJECT S No. 161 (3)

SHEET 1 OF SHEETS 24

PLAN  
 DRAWN BY  
 CHECKED BY  
 DATE  
 PROJECT NO.  
 SHEET NO.



PROFILE  
 DRAWN BY  
 CHECKED BY  
 DATE  
 PROJECT NO.  
 SHEET NO.



ITEM No	DESCRIPTION	QUANTITY	Finals
106-C	UNCLASSIFIED CHANNEL EXCAV	634 C.Y.	624
107	STRUCTURE EXCAVATION (MOD)	143 C.Y.	133
109	MAINT OF TRAFFIC FOR BRIDGE PROJ	1 L.S.	
401-B	CONCRETE CLASS B (MOD)	71 C.Y.	
402	REINFORCING STEEL	10840 LB.	10,858
403-A	STRUCTURAL STEEL	22270 LB.	22,249
441	TEMPORARY BRIDGE	1 L.S.	
442	REMOVAL OF PRESENT SUPERSTRUCT.	1 L.S.	
521	STONE FILL	522 C.Y.	460
542	TWO CABLE GUARD RAIL	88 L.F.	

SHEET	DESCRIPTION
6 OF 24	PLAN AND PROFILE
9 OF 24	PROFILE AND BORINGS
8 OF 24	PLAN
10 OF 24	DETAILS OF ABUTMENTS NO. 1 AND 2
11 OF 24	REINFORCING STEEL DETAILS
5 OF 24	EARTH WORK SHEET
12 OF 24	STANDARD DRAWING C-245(1) SUPERSTRUCTURE DET. (MODERN) W/SHOUL
13 OF 24	STANDARD DRAWING SB-20, DETAILS A, D, E, H, J, AND L
14 OF 24	STANDARD DRAWING SB-11, BARRICADES, SIGNS AND LIGHTS
21-24 OF 24	CHANNEL SECTIONS

FISH HATCHERY BRIDGE  
 CANAAN - 5161(3)  
 SHEET 7 OF 24

DATE: 10/10/57  
 DRAWN BY: A. MAURIS  
 CHECKED BY: J. W. BROWN  
 PROJECT NO. 5161(3)

