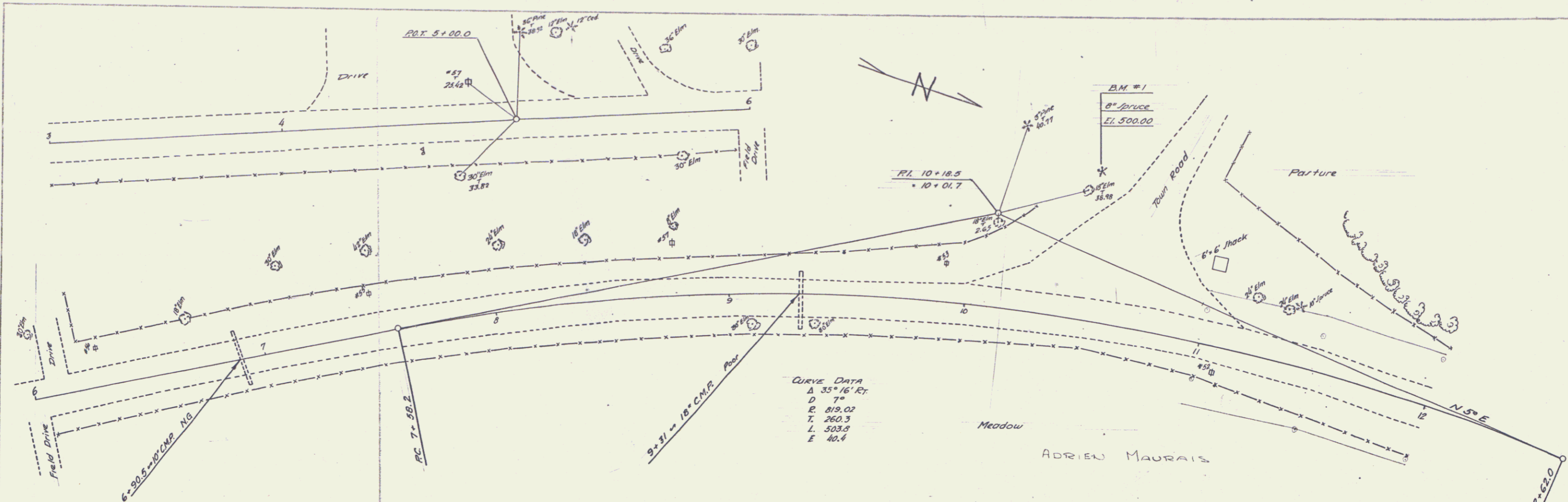


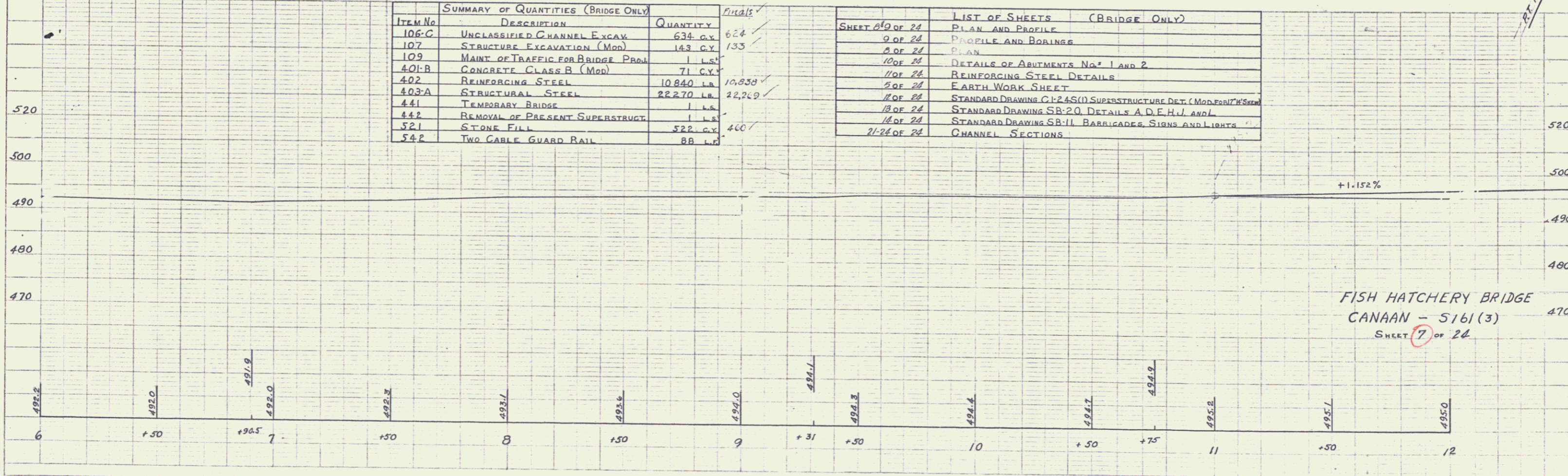
PLAN
 DRAWN BY
 CHECKED BY
 DATE
 PROJECT NO.
 SHEET NO.



CURVE DATA
 Δ 35° 15' RT
 D 7°
 R 819.02
 T 260.3
 L 503.8
 E 40.4

ITEM No	DESCRIPTION	QUANTITY	Finals
106-C	UNCLASSIFIED CHANNEL EXCAV	634 C.Y.	624
107	STRUCTURE EXCAVATION (MOD)	143 C.Y.	133
109	MAINT OF TRAFFIC FOR BRIDGE PROJ	1 L.S.	
401-B	CONCRETE CLASS B (MOD)	71 C.Y.	
402	REINFORCING STEEL	10,840 LB.	10,858
403-A	STRUCTURAL STEEL	22,270 LB.	22,249
441	TEMPORARY BRIDGE	1 L.S.	
442	REMOVAL OF PRESENT SUPERSTRUCT.	1 L.S.	
521	STONE FILL	522 C.Y.	460
542	TWO CABLE GUARD RAIL	88 L.F.	

SHEET	DESCRIPTION
6 OF 24	PLAN AND PROFILE
9 OF 24	PROFILE AND BORINGS
8 OF 24	PLAN
10 OF 24	DETAILS OF ABUTMENTS NO. 1 AND 2
11 OF 24	REINFORCING STEEL DETAILS
5 OF 24	EARTH WORK SHEET
12 OF 24	STANDARD DRAWING C1-245(1) SUPERSTRUCTURE DET. (MODERN) W/SHOUL
13 OF 24	STANDARD DRAWING SB-20, DETAILS A, D, E, H, J, AND L
14 OF 24	STANDARD DRAWING SB-11, BARRICADES, SIGNS AND LIGHTS
21-24 OF 24	CHANNEL SECTIONS



FISH HATCHERY BRIDGE
 CANAAN - 5161(3)
 SHEET 7 OF 24

DATE: 10/10/57
 DRAWN BY: A. MAURIS
 CHECKED BY: J. W. BROWN
 PROJECT NO. 5161(3)